

Report on the Actionable Implementation Plan (AIP) for the IPSI PoA 2023-2030 and Adoption of the AIP

Ichiro Hama

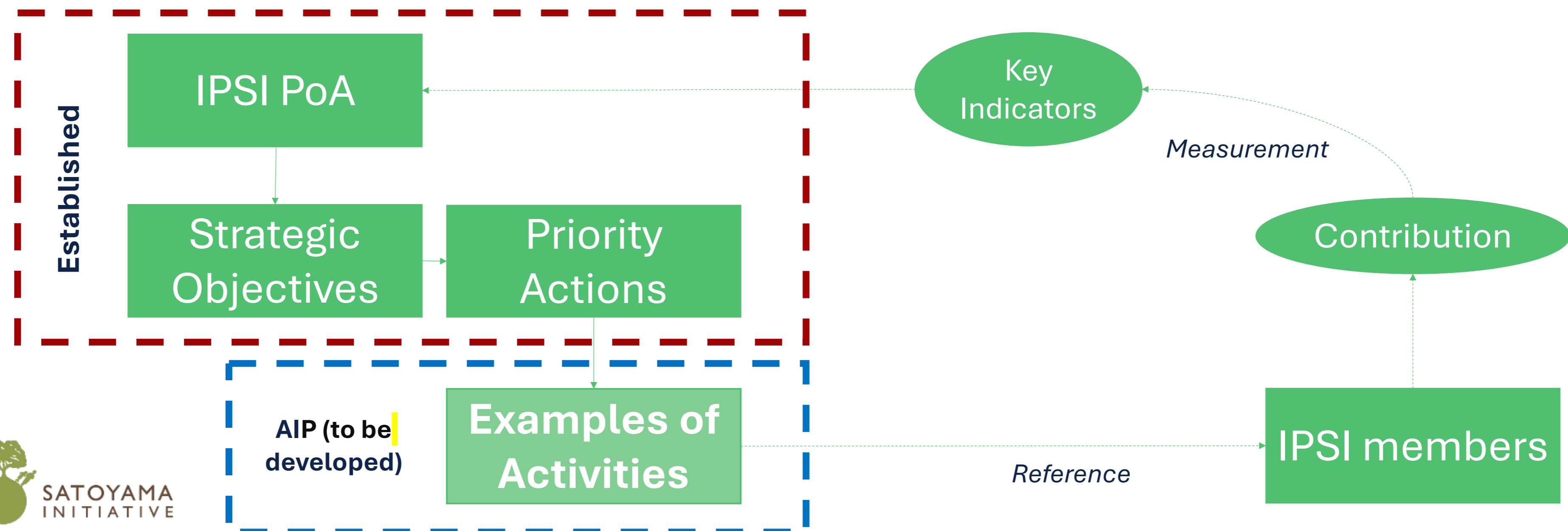
Deputy Director, IPSI Secretariat

Programme Coordinator, UNU-IAS

The Actionable Implementation Plan (AIP) Overview

The AIP is expected to:

1. Establish a clear linkage between Strategic Objectives and Priority Actions on the IPSI PoA
2. Provide examples of actions for the IPSI members to contribute to the IPSI PoA
3. Provide a clear overview on the overall IPSI programs and activities (membership application, collaborative activities, and etc.) to review the functioning of IPSI



Timeline of the AIP Draft Development

Adoption of IPSI Plan of Action (PoA) 2023-2030 at IPSI-9



The First Actionable Implementation Plan/AIP Webinar (28 April 2025, Online)



Open Call for the Thematic Working Groups/TWG (1 May 2025)



TWG Meetings, Online Sharing, Drafting and Review, etc. (June – Ongoing)



The Second AIP Webinar (26 January 2026, Online)



Final Draft and Feedback from TWG and IPSI Members (February 2026)



Adoption of the AIP at IPSI-10 (3-5 March 2026, Ecuador and Online)

Thematic Working Group (TWG) Members

SO-3 TWG : 16 IPSI members (Area-Based Conservation Measures)

SO-4 TWG : 16 IPSI members (Ecosystem Restoration)

SO-5 TWG : 18 IPSI members (Sustainable Value Chain Development)

No.	Organization Name	Region
1	Ministry of Environment and Sustainable Development, Madagascar	Africa
2	Daluhay - Daloy ng Buhay	Asia-Pacific
3	Kenya Wetlands Biodiversity Research Team	Africa
4	Ministry of the Environment, Government of Japan	Asia-Pacific
5	GIERI asbl/Landacre Network D.R.CONGO	Africa
6	UNEP-IEMP program in Chinese Academy of Science (in Beijing)	Asia-Pacific
7	Thailand Environment Institute	Asia-Pacific
8	Conservation Solutions Afrika	Africa
9	Environmental Protection and Conservation Organisation (EPCO)	Africa
10	Environmental Ethics Foundation of Taiwan, EEFT	Asia-Pacific
11	Clarendon Parish Development Committee BS	Latin America and the Caribbean
12	National Dong Hwa University	Asia-Pacific
13	Taiwan Biodiversity Research Institute	Asia-Pacific
14	Ifugao State University	Asia-Pacific
15	Higher Polytechnic School of Engineering - University of Santiago de Compostela	Western Europe and Others
16	Forest Peoples Programme	Western Europe and Others

No.	Organization Name	Region
1	Agency of Rural Development and Soil and Water Conservation, MOA (ARDSWC)	Asia-Pacific
2	College of Life and Environmental Science, Minzu University of China	Asia-Pacific
3	Marine ecosystems protected Areas (MEPA) Trust	Latin America and the Caribbean
4	Conservation Alliance International	Africa
5	Centro de Formación en Agroecología y Sustentabilidad AC	Latin America and the Caribbean
6	Manuae Enea Conservation Trust	Asia-Pacific
7	Back To Nature	Asia-Pacific
8	Caraga State University, Center for Research in Environmental Management and Eco-governance (CRÈME)	Asia-Pacific
9	Circle for Conservation of Natural Resources (CESAREN)	Africa
10	Social Policy Ecology Research Institute	Asia-Pacific
11	Grains of Hope Mobilisation (GOHMO)	Africa
12	Woman, Development, Future Public Union (WDFPU)	Eastern Europe
13	South Asian Forum for Environment	Asia-Pacific
14	COBEC	Africa
15	Yolda Initiative	Eastern Europe
16	Landcare Tasmania Inc.	Asia-Pacific

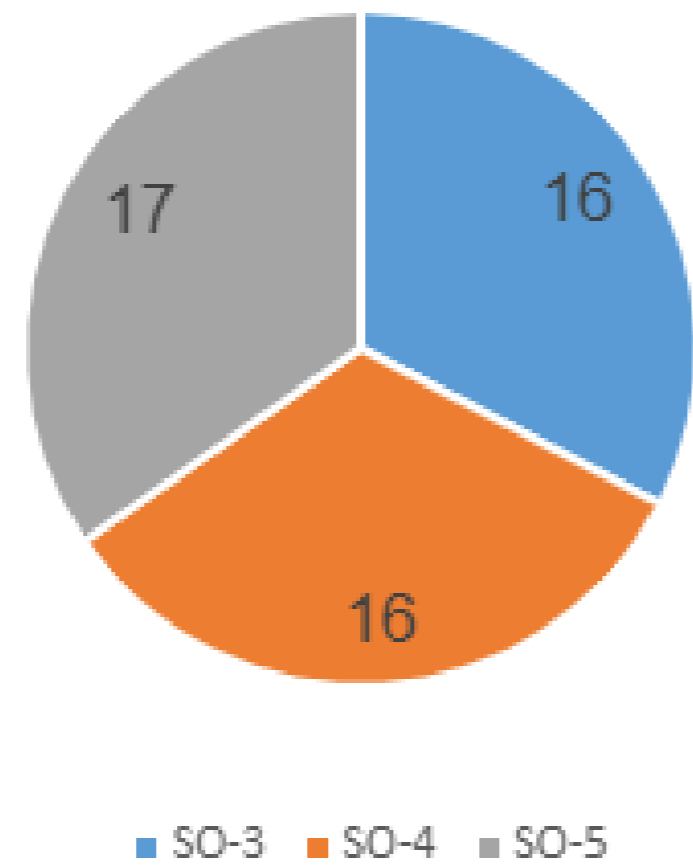
No.	Organization Name	Region
1	Ghana National Biodiversity Steering Committee	Africa
2	Farmers' Seed Network	Asia-Pacific
3	Akita International University	Asia-Pacific
4	Kenya Forestry Research Institute	Africa
5	Small Action For Enterprise - SAFE Ghana	Africa
6	VICAM: Vicuñas, camelidos y ambiente	Latin America and the Caribbean
7	Union of Community Development Volunteers	Africa
8	Kathmandu Forestry College (KAFCOL)	Asia-Pacific
9	Tse-Xin Organic Agriculture Foundation	Asia-Pacific
10	Pastoralist Economic and Social Advancement (PESA)	Africa
11	Nature and Livelihoods	Africa
12	Asociacion de campesinos vecinos del parque natural nacional serrania de los Yariguies (ASOCAPAYARI)	Latin America and the Caribbean
13	Advocates for Biodiversity Conservation	Africa
14	ERUDEF Biodiversity University	Africa
15	Tribhuvan University, Amrit Campus	Asia-Pacific
16	Taiwan Landscape Environment Association / National Chung Hsing	Asia-Pacific
17	ENVIROMENTAL RPROTECTION INFORMATION CENTER (EPIC)	Africa
18	CORFOPAL	Latin America and the Caribbean

Notes:

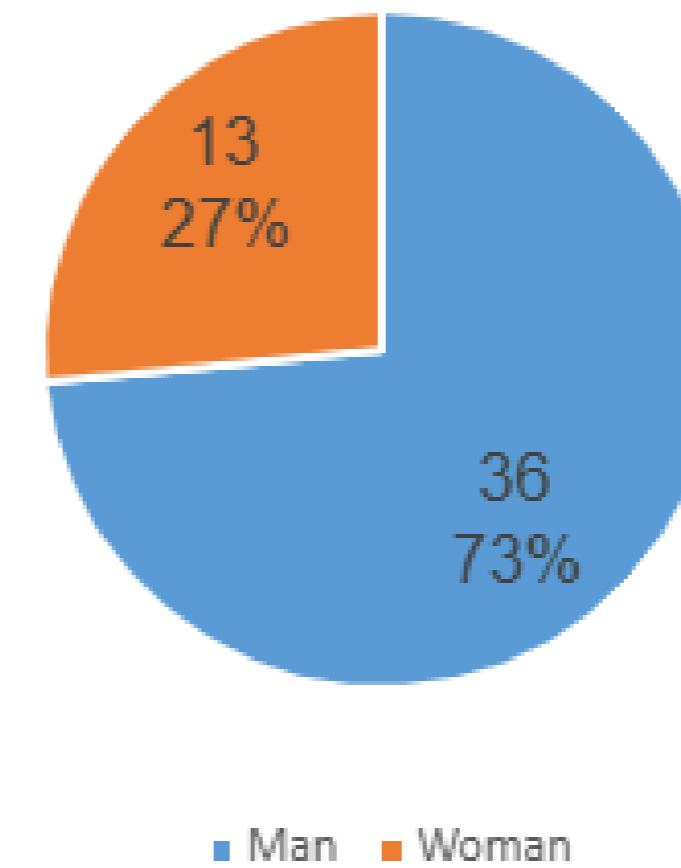
- As SO-1 and SO-2 are considered crosscutting issues, no separated TWG is established.
- Call for TWG were open to all IPSI members, have been discussed with the lead organizations and approved by the IPSI Steering Committee members.

Thematic Working Group: Demographics

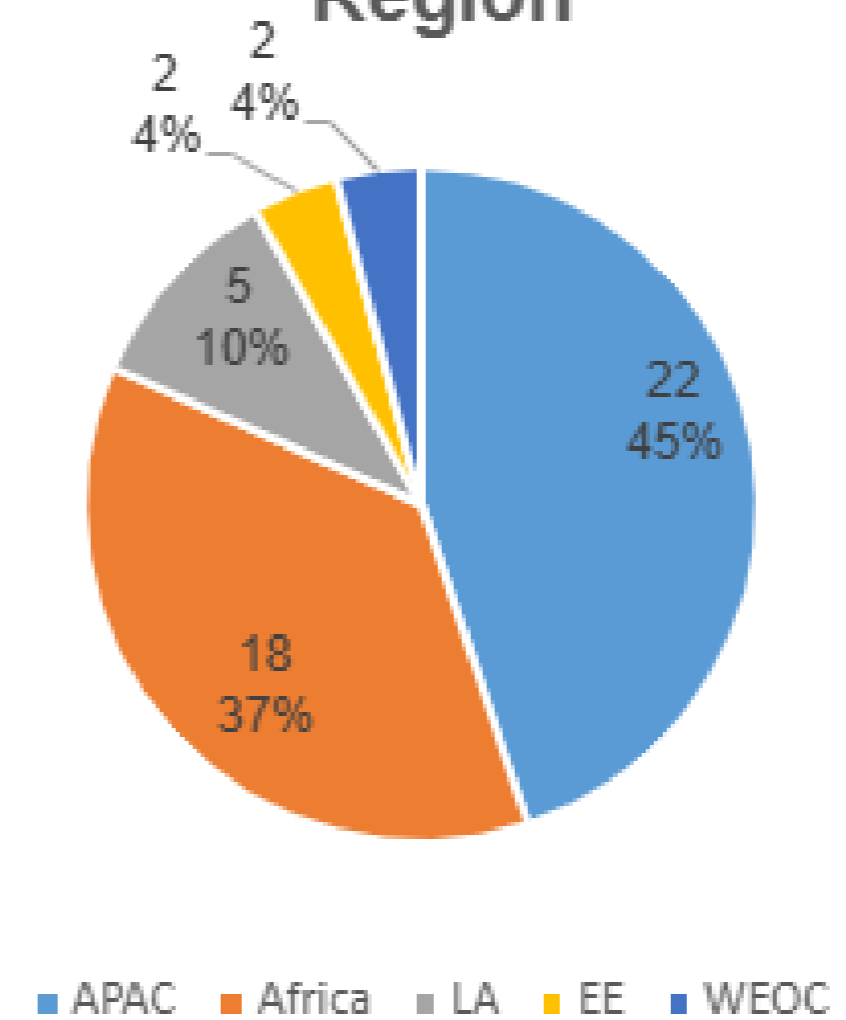
Thematic Working Group Members



Gender



Region



Thematic Working Group Activities

IPSI Secretariat, PoA Lead Organizations and TWG members have been collaboratively developed the AIP draft starting from June 2025.

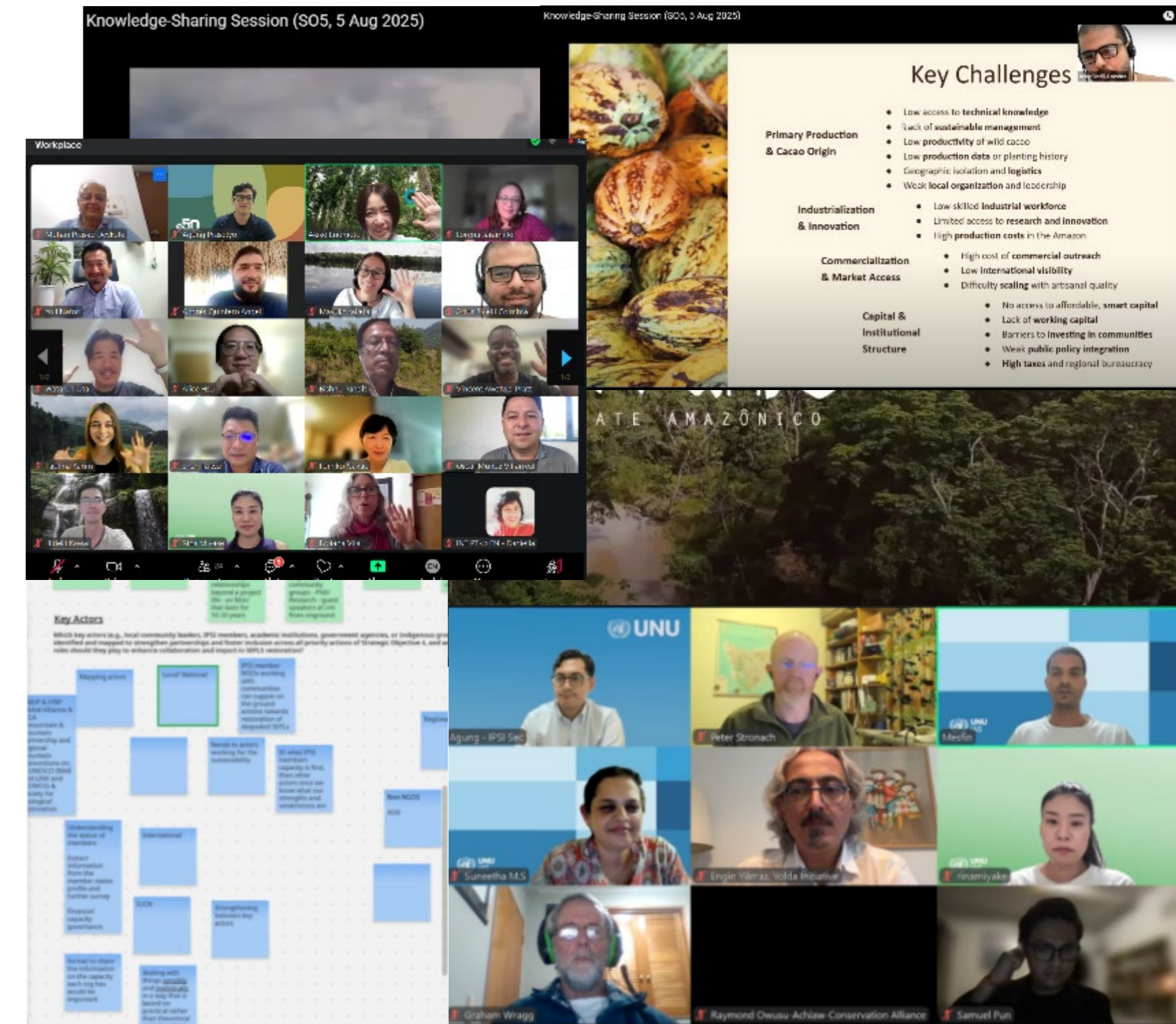
**Strategic Objective 3:
Area-Based Conservation Measures
Lead Organization: IUCN**

**Strategic Objective 4:
Ecosystem Restoration
Coordinated by: UNU-IAS/IPSI Secretariat**

**Strategic Objective 5:
Sustainable Value Chain Development
Lead Organization: CI**

Activities include:

- ❖ TWG meetings
- ❖ Online sharing/workshops
- ❖ Document reviews
- ❖ Drafting process



Outline of the AIP

1. Background and Purpose

2. Examples of Actions in Relation to the Priority Actions under the IPSI Strategy and Plan of Action (PoA) 2023-2030

- SO1 (Knowledge Management, Co-production and Uptake),
- SO2 (Institutional Framework and Capacity Development)
- SO3 (Area-based Conservation Measures)
- SO4 (Ecosystem Restoration)
- SO5 (Sustainable Value Chain Development)

3. Resource Mobilization Activities

Annexes

Additional Information

- (A) IPSI Primary Functions and Programs/Activities
- (B) Diagram
- (C) Monitoring and Reporting
- (D) Revised PoA Key Indicators (Next step)

1. Background and Purpose

- **Serves as a key reference** for all IPSI members, providing guidance on specific actions that align with the priority areas of each strategic objective
- **Reaffirm the principles** which apply to all of the strategic objectives:
 - i Strengthen networking and cooperation among members at local, regional, and global scales;
 - ii Promote full, effective, and equitable participation of Indigenous Peoples and Local Communities, irrespective of race, ethnic group, religion, and gender, while supporting women, youth, and people in vulnerable and marginalized situations; and
 - iii Comport fully with the principles of Section C of the Kunming-Montreal Global Biodiversity Framework
- **Living document** and will be flexible for future amendment through periodic review and due process. Periodic reviews for AIP will be conducted along with the IPSI PoA and progress will be reported during the General Assemblies.

2. Examples of Actions: Strategic Objective 1

Strategic Objective 1: Knowledge Co-Production, Management, and Uptake	
Conduct research and knowledge management related to landscape and seascape approaches to address direct and underlying causes responsible for the loss of biological and cultural diversity, as well as ecological and socio-economic services from SEPLS.	
Priority Actions	Examples of Actions
1. Collect, publish, and share knowledge on the conservation, sustainable use, and restoration of SEPLS through the IPSI online portal of case studies, among others.	<ul style="list-style-type: none"> a. Collect, publish and share IPSI case studies related to the topics b. Collect, publish and share IPSI Collaborative Activities c. Upload SEPLS-related knowledge resources to the IPSI online portal for open access
2. Support IPSI members, in particular those working with Indigenous Peoples and Local Communities, to produce case studies and relevant knowledge materials to enhance knowledge of community-led and traditional systems of SEPLS management.	<ul style="list-style-type: none"> a. Support IPSI members and other Indigenous Peoples and local communities (IPLCs) partners to produce and publish case studies on community led and traditional systems of SEPLS management b. Support and publish IPSI collaborative activities documenting traditional SEPLS management systems c. Provide guidance and templates to IPSI members for developing IPLCs focused case studies d. Share IPLCs led knowledge materials on traditional SEPLS practices through IPSI channels
3. Encourage synergies between modern science and traditional knowledge systems on the benefits of landscape and seascape approaches for conservation and sustainable use of biodiversity including through tools such as geospatial data, scenarios, and modelling.	<ul style="list-style-type: none"> a. Generate and share IPSI knowledge products (case studies, SITR/research) focusing on synergies between modern science and traditional knowledge systems b. Implement collaborative activities incorporating synergies between modern science and traditional knowledge systems including tools that allow triangulation of information (such as geospatial maps, community mapping and scenario development, among others).
4. Develop and promote IPSI collaborative activities that contribute to integrated research and capacity development action on the conservation and restoration of SEPLS, including recommendations to enable socio-ecological resilience.	<ul style="list-style-type: none"> a. Publish results of IPSI Collaborative Activities on conservation, restoration and socio ecological resilience of SEPLS b. Organize workshops and webinars on IPSI case studies, collaborative activities and relevant research c. Review IPSI case studies and collaborative activities to strengthen communication and integrated research among members d. Engage in IPSI Collaborative Activities on integrated research, capacity development and sharing experiences on site e. Co-author and publish research papers, books and reports with IPSI members and non-members on SEPLS conservation and restoration f. Engage educational institutions and support development of relevant educational materials that can be used for formal, non-formal and informal learning

2. Examples of Actions: Strategic Objective 1

Strategic Objective 1: Knowledge Co-Production, Management, and Uptake	
Conduct research and knowledge management related to landscape and seascape approaches to address direct and underlying causes responsible for the loss of biological and cultural diversity, as well as ecological and socio-economic services from SEPLS.	
Priority Actions	Examples of Actions
5. Implement outreach activities to transfer knowledge and build further recognition and visibility of the Satoyama Initiative, IPSI, and SEPLS concept taking advantage of social media channels, international meetings, and other relevant events.	<ul style="list-style-type: none"> a. Organize and participate in international meetings, webinars and online forums to promote IPSI, the Satoyama Initiative and SEPLS approaches b. Publish newsletters on IPSI works, initiatives and membership opportunities c. Launch social media campaigns highlighting activities within Satoyama Initiative, IPSI and SEPLS d. Establish media partnerships to increase visibility of IPSI’s initiatives and the Satoyama Initiative
6. Review and synthesize information from case studies submitted by IPSI members, including through the publication of the Satoyama Initiative Thematic Review (SITR), promotion of further cooperation between IPSI and IPBES, and facilitation of the transfer and uptake of this knowledge by relevant science and policy processes, capacity building, and education initiatives.	<ul style="list-style-type: none"> a. Organize workshops and thematic discussions on IPSI case studies to facilitate knowledge transfer to science-policy processes and capacity building b. Submit and publish case studies to the SITR for review and synthesis c. Develop synthesis reports analyzing IPSI case studies in relation to IPBES assessments d. Publish research papers, books and reports based on IPSI case studies to support education and policy uptake
7. Support efforts to explore the concept of “biocultural diversity” and its relevance to SEPLS.	<ul style="list-style-type: none"> a. Publish case studies and research papers, books or reports exploring biocultural diversity in SEPLS b. Organize workshops on IPSI case studies and initiatives linking biocultural diversity to SEPLS c. Submit case studies focused on biocultural diversity for review and synthesis d. Develop educational materials connecting biocultural diversity to SEPLS conservation and restoration e. Collaborate with IPLCs to document and promote biocultural diversity within SEPLS

2. Examples of Actions: Strategic Objective 2

Strategic Objective 2: Institutional Frameworks and Capacity Development

Strengthen institutional frameworks and develop capacity to integrate landscape and seascape approaches into policies and cross-sectoral strategies related to biodiversity, climate change, sustainable land and sea management, energy, water, health, agri-food systems, and disaster risk reduction to maintain or enhance the benefits of SEPLS to the environment and society.

Priority Actions	Examples of Actions
<p>1. Foster the integration of landscape and seascape approaches into relevant policies of the Convention on Biological Diversity and other Multilateral Environment Agreements (MEAs), including the United Nations Framework Convention on Climate Change (UNFCCC) and the United Nations Convention to Combat Desertification (UNCCD), among other relevant policies and instruments to ensure synergies and coherence in their implementation.</p>	<ul style="list-style-type: none"> a. Publication of research papers highlighting the relevance and synergy of SEPLS in supporting MEA objectives b. Participate or engage with global biodiversity and climate policy dialogues to promote SEPLS integration c. Publication of case studies demonstrating SEPLS contributions to MEA targets
<p>2. Develop guidance and tools to integrate landscape and seascape approaches into policies related to biodiversity conservation and sustainable development, including the NBSAPs, LBSAPs, and cross-sectoral strategies, and strengthen the implementation capacities of national and sub-national actors.</p>	<ul style="list-style-type: none"> a. Develop guidelines and tools for integrating SEPLS and their priorities into NBSAPs, LBSAPs and cross sectoral strategies b. Conduct capacity-development workshops on landscape and seascape approaches for national and sub national policymakers c. Implement SEPLS based policy pilot projects at national or sub-national levels d. Share best practices and case studies on SEPLS policy integration through IPSI platforms (website, social media, newsletter, knowledge products, etc.)
<p>3. Mainstream landscape and seascape approaches into plans and strategies on COVID-19 recovery, health, and disaster risk reduction.</p>	<ul style="list-style-type: none"> a. Analyze and share case studies on SEPLS roles in COVID-19 recovery and risk reduction b. Organize webinars on integrating SEPLS into post-COVID recovery, health and disaster risk reduction strategies c. Publish policy briefs highlighting SEPLS contributions to health, resilience and disaster risk reduction, including focusing on One Health aspects d. Implement SEPLS based community projects for health promotion and disaster resilience

2. Examples of Actions: Strategic Objective 2

Strategic Objective 2: Institutional Frameworks and Capacity Development

Strengthen institutional frameworks and develop capacity to integrate landscape and seascape approaches into policies and cross-sectoral strategies related to biodiversity, climate change, sustainable land and sea management, energy, water, health, agri-food systems, and disaster risk reduction to maintain or enhance the benefits of SEPLS to the environment and society.

Priority Actions	Examples of Actions
<p>4. Invite decision makers to provide information on the multiple benefits of SEPLS management, including its importance in achieving the SDGs and the Kunming-Montreal Global Biodiversity Framework, and in efforts to mainstream biodiversity into other production sectors.</p>	<ul style="list-style-type: none"> a. Organize high level panel discussions for decision-makers on SEPLS contributions to SDGs and the GBF ensuring that high level panels and field visits include IPLC leaders and women and youth representatives as speakers/hosts b. Develop and distribute policy briefs on the multiple benefits of SEPLS and biodiversity mainstreaming in production sectors c. Participate in national and global dialogues to advocate SEPLS integration into sectoral strategies d. Showcase SEPLS best practices through case studies and field visits to SEPLS sites and other production landscapes
<p>5. Develop the capacity of broad stakeholders, especially policymakers, to support the implementation of landscape and seascape approaches at the ground level and share experiences through workshops and events.</p>	<ul style="list-style-type: none"> a. Conduct capacity development workshops on SEPLS implementation for policymakers and practitioners b. Develop and promote SEPLS resilience indicators training tools for ground-level application c. Organize knowledge exchange sessions between policymakers and local SEPLS practitioners d. Integrate SEPLS principles into university curricula and professional training programs e. Organize thematic sessions on SEPLs in regional and global events and congresses on topics of interest to sustainability (e.g., conservation or ethnobiology, sustainable agriculture, etc.). f. Observe, record and enhance the role of women in the SEPLs

3. Resource Mobilization Activities

- **Diversify and expand resources, both financial and non-financial** through a more strategic and inclusive approach to implement the AIP and achieve the IPSI objectives.
- Recognizing that the IPSI's greatest asset is its membership, **resources are to be mobilized for and from members.**

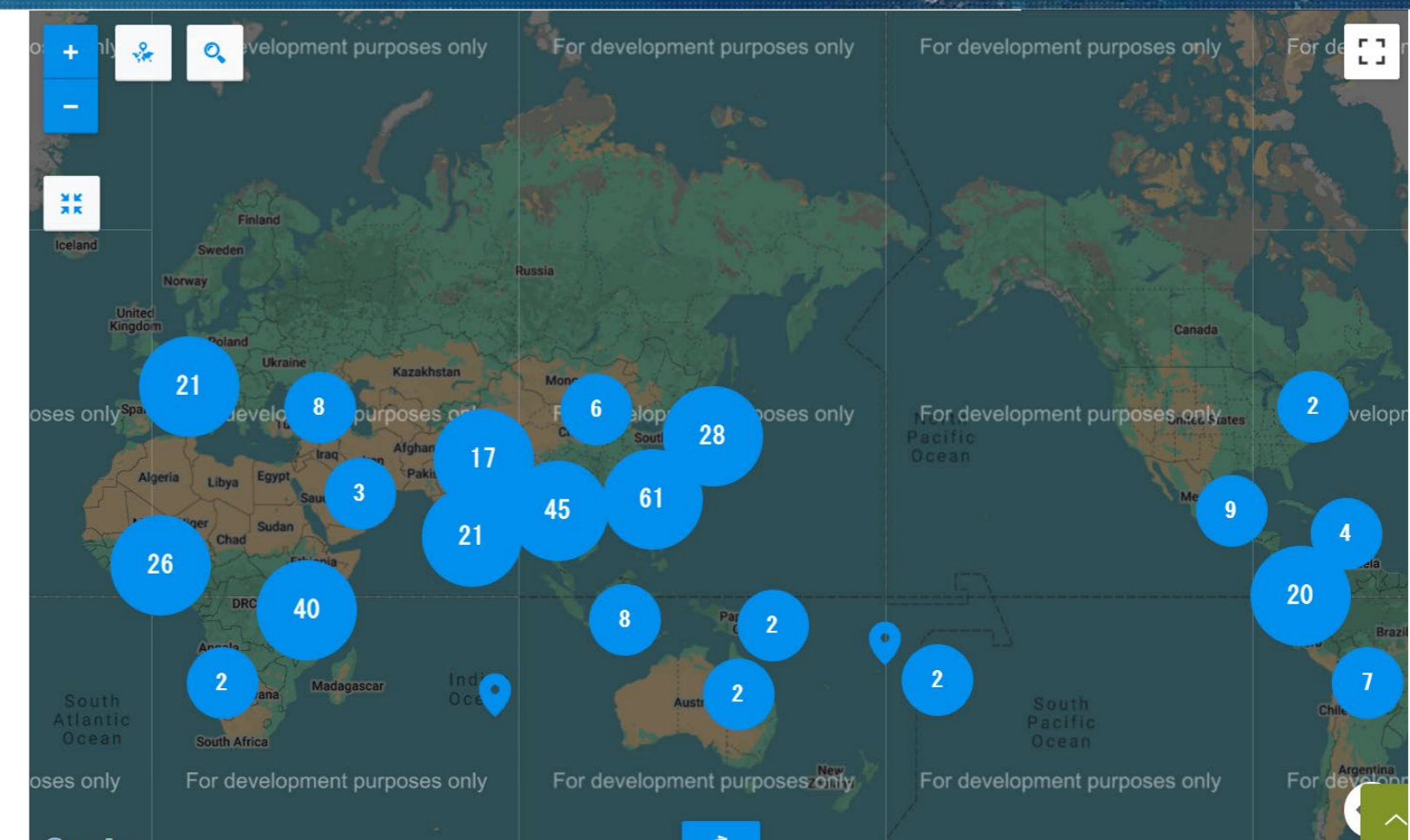
Considerations for Resource Mobilization:

- Engage International Financial Institution to Support Implementation
- Foster Collaboration with the Private Sector
- Devise the Modality of the IPSI Global Conference Organization
- Leverage Academic Institutions within IPSI for Strategic Research Contributions
- Enhance Visibility and Advocacy to Attract Resources
- Keep an Eye Open for Funded Opportunities

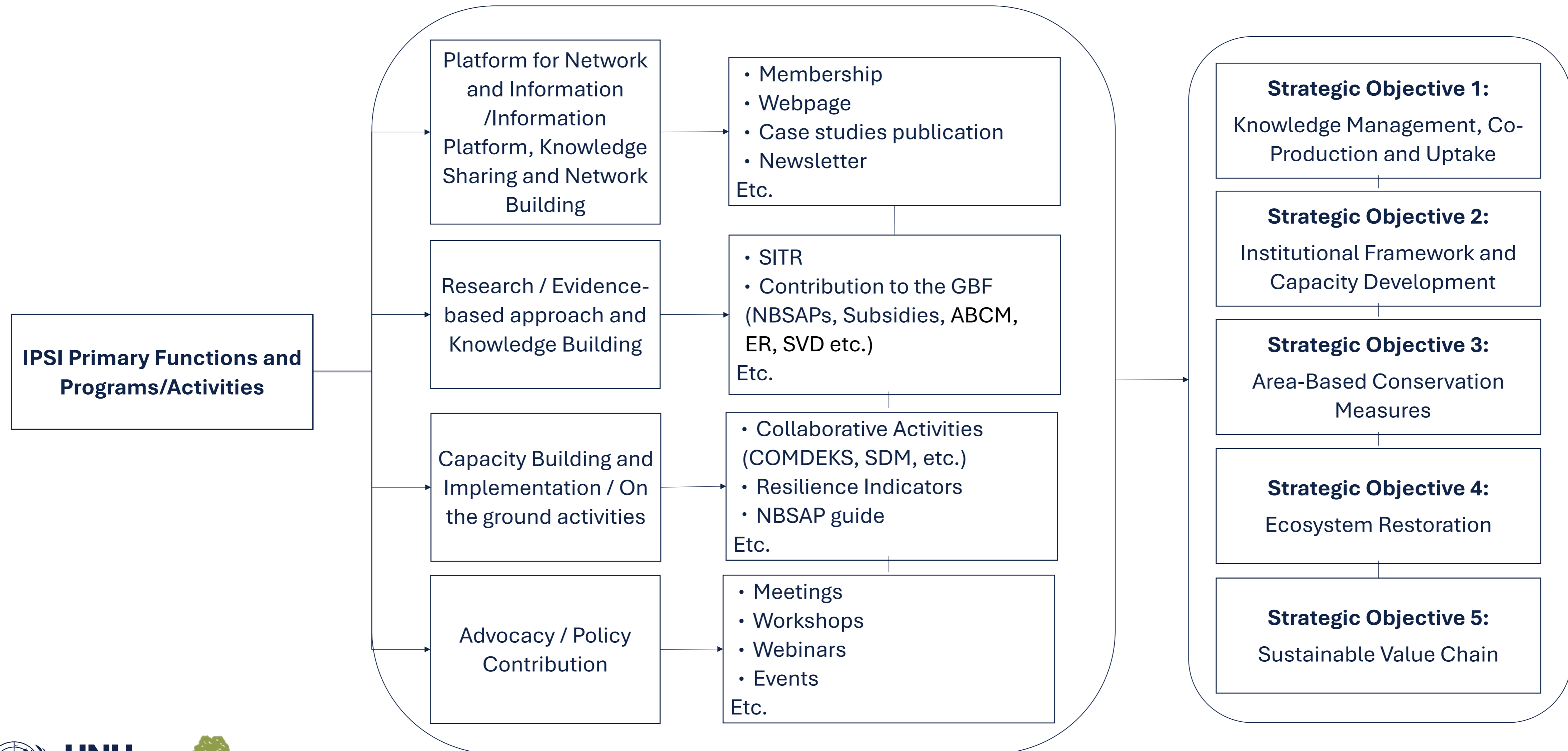
Additional Information A: IPSI Primary Functions/Programs

1. IPSI Membership
2. IPSI Collaborative Activities
3. IPSI Case Studies
4. IPSI Newsletters
5. IPSI Events
6. IPSI Annual and Decade Report
7. Satoyama Initiative Thematic Review (SITR)
8. Policy Brief
9. Guidebook/tools
10. Workshops

**The list highlights selected programs and activities primarily coordinated by the IPSI Secretariat. It does not include the many diverse initiatives carried out independently by IPSI members within their own contexts and regions, which also contribute to the IPSI Plan of Action 2023–2030.*



Additional Information B: IPSI Primary Functions/Programs (Diagram of IPSI functions and activities)





Thank You!

Photo: Jcomp/freepik.com

