

# Report from the IPSI Secretariat and Partners on IPSI Projects

## (a) Important Activities and Outcomes After IPSI-9

**Ichiro Hama**

Deputy Director, IPSI Secretariat  
Programme Coordinator, UNU-IAS

# IPSI Strategy and Plan of Action 2023-2030 (PoA)

## Five Strategic Objectives

**1: Knowledge Management, Co-Production and Uptake**

**2: Institutional Framework and Capacity Development**

**3: Area-Based Conservation Measures**

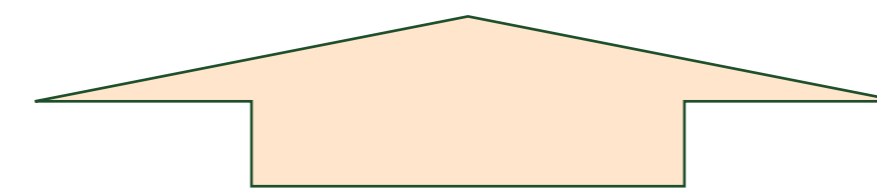
**4: Ecosystem Restoration**

**5: Sustainable Value Chain**

⇒Urlica(IUCN)

⇒Isao (ADB)

⇒Yoji, akiko (CI)



## IPSI's primary function

Knowledge sharing  
Network building

- Meetings
- Events
- Workshops
- Webinars

Information platform

- Case studies
- Webpage
- Newsletter
- Publications

On-the-ground activities  
/ Capacity development

- SDM
- COMDEKS
- Resilience Indicators etc.

Research / Policy contribution

- SITR
- NBSAPs
- Contribution to the GBF

⇒Koji (IGES)

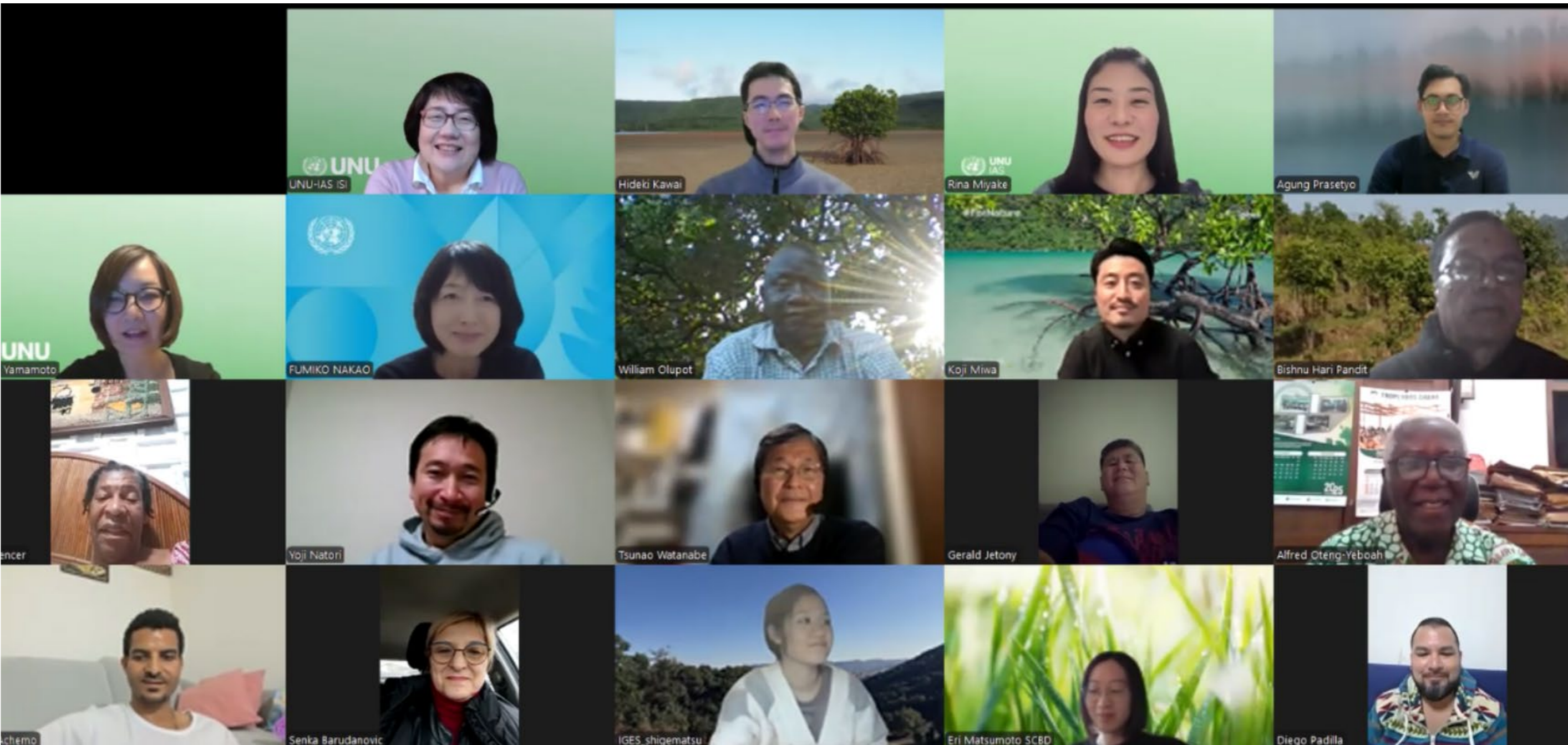
⇒Rissa (UNDP)

⇒Suneetha



# Knowledge sharing Network building

## ➤ Preparation for the IPSI Global Meeting, SC meetings



# Knowledge sharing Network building

## ➤ Outreach events



**CBD SBSTTA27**  
Aligning Sectoral Priorities Towards Policy Coherence, Science and Financing



**CBD COP16**  
Operationalizing Landscape Approaches 🖱️

Landscape Approaches as a Lever to Reduce Conflicts 🖱️



**UNCCD COP16**  
Leveraging Landscape approaches towards Policy Coherence



**CBD SB8j-01**  
Contextualizing socio-ecological indicators



**UNFCCC COP29**  
Seeking Synergistic Solutions: Overcoming Silos and Policy Incoherence

# Information platform

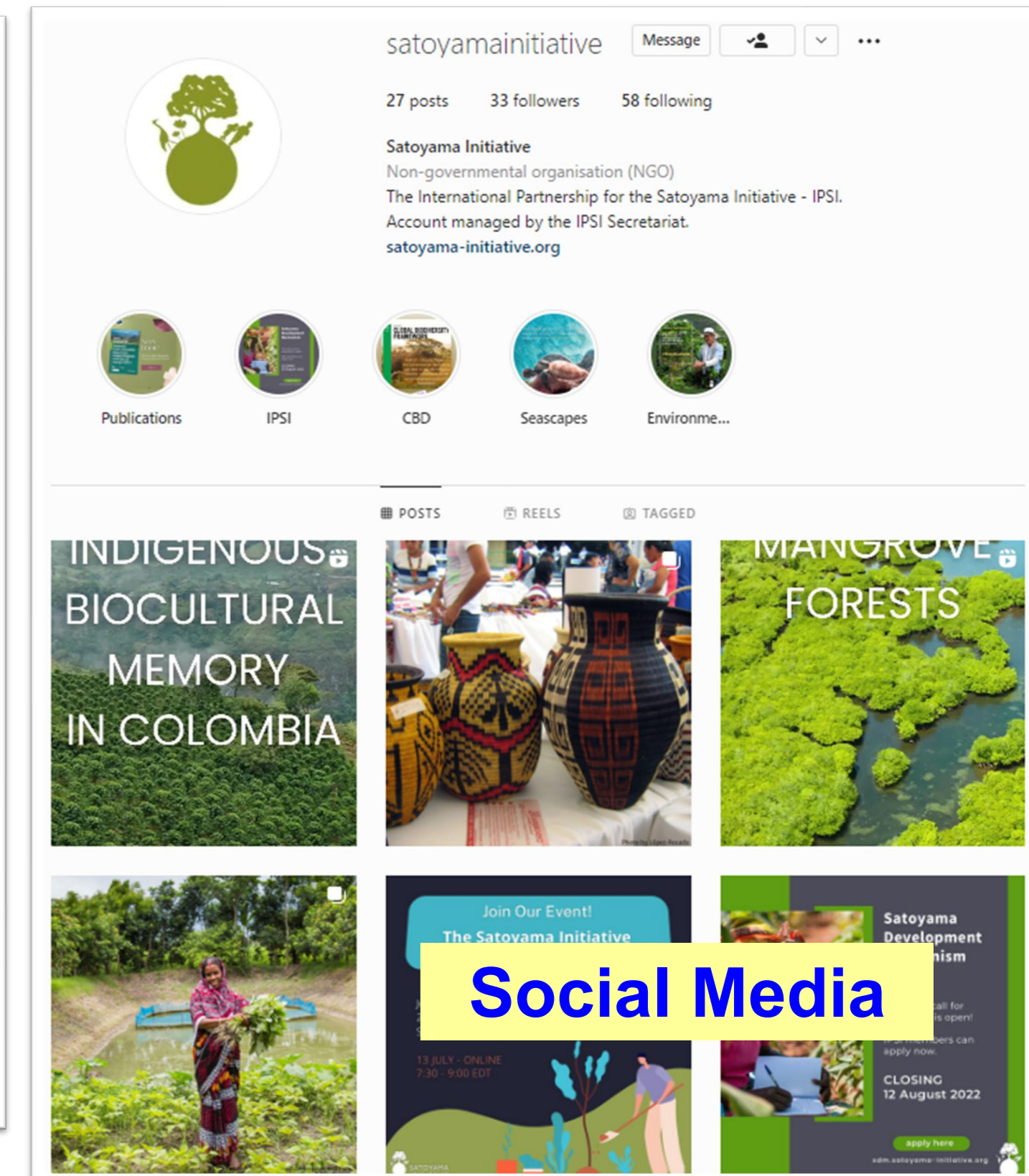
## ➤ Communications and outreach: information sharing



A primary platform for sharing knowledge on the Satoyama Initiative and its implementation.



Seasonal newsletters and monthly live updates provide up-to-date information and news from the members in both English and Japanese.



Most up-to-date information and news are provided through Instagram, Facebook, Twitter, and LinkedIn.



Case study