


---

INTERNATIONAL PARTNERSHIP  
FOR THE SATOYAMA INITIATIVE  
**2021 ANNUAL REPORT**



SATOYAMA  
INITIATIVE





## The International Partnership for the Satoyama Initiative (IPSI) 2021 Annual Report

Published: June 2022

This publication should be cited as:

IPSI Secretariat (2022) The International Partnership for the Satoyama Initiative (IPSI): 2021 Annual Report. United Nations University Institute for the Advanced Study of Sustainability. Tokyo.

Designed by: Secretariat of the IPSI Partnership for the Satoyama Initiative

© United Nations University 2022

Published by:  
United Nations University Institute for the Advanced Study of Sustainability (UNU-IAS)  
5-53-70 Jingumae  
Shibuya-ku, Tokyo 150-8925, Japan  
Email: [isi@unu.edu](mailto:isi@unu.edu)  
Web: <http://satoyama-initiative.org>

The designations employed and the presentation of material throughout the publication do not imply the expression of any opinion whatsoever on the part of UNU-IAS concerning the legal status of any country, territory, city or area or of its authorities, or, concerning its frontiers or boundaries.

The contributing authors are responsible for the choice and presentation of the facts contained in this document and for the opinions expressed therein, which are not necessarily those of UNU or UNU-IAS and do not commit either the University or the Institute.

### Photo credit:

Front and back cover Joel Vodell on Unsplash.





INTERNATIONAL PARTNERSHIP  
FOR THE **SATOYAMA INITIATIVE**

---

TABLE OF CONTENTS

---

**FOREWORD**

<b>Message from the IPSI Director</b>	4
---------------------------------------	---

**2021 ANNUAL REPORT**

<b>Overview</b>	6
<b>Partnership</b>	7
<b>Event Highlights</b>	8
<b>Collaborative Activities</b>	10
<b>Knowledge Product Highlights</b>	14
<b>IPSI Steering Committee</b>	16

**ANNEX**

<b>List of IPSI Members as of March 2022</b>	17
<b>Events History</b>	25

FOREWORD

MESSAGE FROM  
**IPSI DIRECTOR**



I am very pleased to be able to share this annual report which details IPSI's main activities from April 2021 to March 2022.

In 2011, when the first IPSI General Assembly was held at Nagoya University, the Great Eastern Japan Earthquake and Tsunami Disaster occurred, and severe natural disasters have also struck all over the world. In addition, the COVID-19 pandemic since 2020 has had a tremendous impact on our lives. More than ever, there is a strong need to create a resilient and sustainable society that is not easily affected by natural disasters and infectious diseases.

I believe that the experience we have accumulated in activities on SEPLS and the concept of landscape approaches can be of great help in promoting such a sustainable society.

The kick-off event of the UN Decade on Ecosystem Restoration was held on the occasion of the World Environment Day on 5 June 2021. In November of the same year, UNU became a formal Collaborating Agency of the UN Decade.

Since then, IPSI has mobilized a large network of members to produce knowledge and co-create solutions to enhance community-based restoration of SEPLS, working in close cooperation with the Science and Best Practices Task Forces of the UN Decade.

In addition, the Post-2020 Global Biodiversity Framework under the CBD is expected to be adopted later this year. In response to these important international momentums, IPSI's Strategy and Plan of Action is being revised. Building upon the lessons learned from the great efforts on the ground by IPSI members over the past decade, it is now time to consider how to institutionalize the concept of SEPLS. With the knowledge shared by IPSI's members on their research on SEPLS, the Satoyama Initiative has many lessons to share with the world on ecosystem restoration and biodiversity conservation.

I look forward to working with you all to further develop IPSI's activities towards "living in harmony with nature" in the coming decade.

DR TSUNAO WATANABE

*Director of the Secretariat  
International Partnership for the Satoyama Initiative*









Credit: Convention on Biological Diversity

## OVERVIEW

### April 2021 - March 2022

The 2021 fiscal year (April 2021 – March 2022) was the eleventh full year since IPSI was launched in October 2010, and this year the partnership saw its membership grow to 283 organisations. Together they worked toward the Satoyama Initiative's vision of "societies in harmony with nature" through many different activities in all regions of the world.

This was a year of unprecedented challenges for the world with the global COVID-19 pandemic severely impacting our partners and their activities. IPSI postponed its plan to hold the Ninth Global Conference (IPSI-9) yet remained active at major events. The Convention on Biological Diversity held in-person and online meetings, and IPSI contributed to the process of developing the post-2020 global biodiversity framework, as well as organised and took part in other events held virtually, including the International Day for Biological Diversity 2021 Symposium, FAO-RAP webinar on International Day for Biological Diversity, a side event on the Satoyama Initiative at the UN High Level Political Forum on Sustainable Development (HLPF) 2021, and the International Forum for Sustainable Asia and the Pacific (ISAP) 2021 Thematic Track Session. The seventh volume of the "Satoyama Initiative Thematic Review" on the theme Biodiversity-Health-Sustainability Nexus in Socio-Ecological Production Landscapes

and Seascapes (SEPLS) will be published by Springer Publishing in June 2022, following the virtual IPSI Case Study workshop held in June 2021. This next instalment of the SISR series will contribute to the growing body of knowledge on landscape approaches and to related international processes including the Intergovernmental Science-Policy Platform on Biodiversity and Ecosystem Services (IPBES).

The IPSI Steering Committee had three meetings, in July and December 2021. The July 2021 meeting was email-based, and the December 2021 session was held virtually. A sub-committee was established to update the IPSI Strategy and Plan of Action to prepare the partnership for this decade.

As always, we at the IPSI Secretariat at the United Nations University Institute for the Advanced Study of Sustainability (UNU-IAS) in Tokyo, Japan would like to thank all of the IPSI member organisations and everyone else who has contributed to the continuing success of the partnership, with particular appreciation to the Ministry of the Environment, Government of Japan (MOEJ) for their financial support for IPSI's core activities.

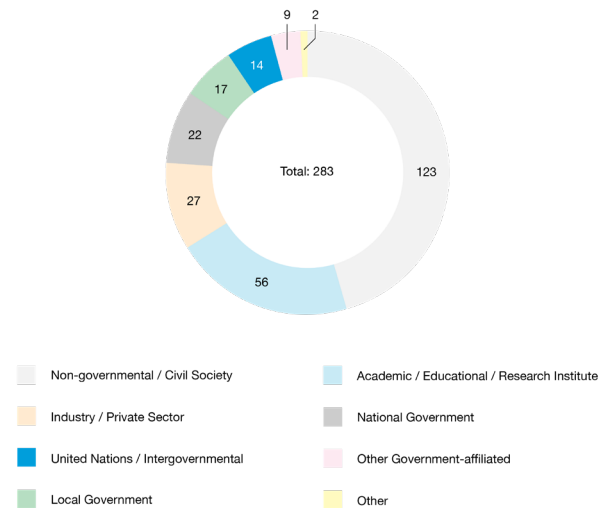


## PARTNERSHIP

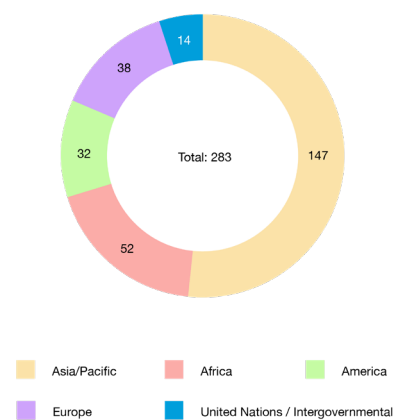
IPSI welcomed 12 new members, bringing the total number of member organisations to 283 by the end of the fiscal year 2021. The new members from this year are:

- **AEON Environmental Foundation** (Non-governmental or civil society organization, Japan)
- **Agriculture Department, New Taipei City Government** (National or local governmental organization, Chinese Taipei)
- **Back to Nature** (Industry or private sector organization, Nepal)
- **Bhutan Ecological Society** (Non-governmental or civil society organization, Bhutan)
- **Community Agriculture and Environmental Protection Association Cameroon (CAEPA)** (Non-governmental or civil society organization, Cameroon)
- **Coelacanth Shokudou. LLC (MUJUN)** (Industry or private sector organization, Japan)
- **Green Development Advocates** (Non-governmental or civil society organization, Cameroon)
- **Environment and Rural Development Foundation (ERuDeF)** (Non-governmental or civil society organization, Cameroon)
- **ERuDeF University Institute of Applied Biodiversity Sciences** (Academic, educational and/or research institute, Cameroon)
- **The Goat Trust** (Non-governmental or civil society organization, India)
- **Institute of Ecology and Sustainable Development** (Academic, educational and/or research institute, Russia)
- **Taiwan Wild Bird Federation** (Non-governmental or civil society organization, Chinese Taipei)

IPSI Membership by Organisation Type



Geographical Representation by Region of Head Office



We are proud to see IPSI's representation strengthen and expand in all regions of the world. IPSI continues to expand its membership among some under-represented types of organisations, such as indigenous peoples' and local community groups, and private sector organisations. For the full list of current IPSI members, please see [here](#).



## EVENT HIGHLIGHTS

IPSI's diverse membership, as always, continues to be involved in a great many events around the world. Below is a list of some that were either specifically organized on behalf of IPSI, or were otherwise particularly relevant to the partnership.

### IPSI Case Study Workshop 2021

*28-30 June 2021:* This workshop was held online as part of the process towards publishing the Satoyama Initiative Thematic Review Volume 7. The theme of the workshop was “The nexus between biodiversity, health, and sustainable development in managing socio-ecological production landscapes and seascapes (SEPLS)”. The primary focus was on the interlinkages between biodiversity and multiple dimensions of health—physical, mental, and spiritual. Selected authors, who are IPSI members, shared their case studies and received feedback on their manuscripts from their peers for further improvement. Participants exchanged views on the concept of the nexus between biodiversity, health, and sustainable development and discussed methodologies to measure the effectiveness of SEPLS management in securing and improving both ecosystem and human health by taking lessons from the IPSI case studies. An online platform was developed for comments and exchanging views among participants. Discussion sessions led to the development of key messages and later to the Synthesis chapters. The SITR vol.7 will be published in June 2022 by Springer Publishing. For details of the workshop, see [here](#).

### UN High-Level Political Forum on Sustainable Development (HLPF) Side event on the Satoyama Initiative

*9 July 2021:* This online side event titled “Satoyama Initiative – Healthy Planet, Healthy People: Role of Satoyama Initiative for Green and Blue Recovery” explored the role of the Satoyama Initiative in building back better from the COVID-19 pandemic. Speakers emphasised the need for a green and blue recovery, underlining that the COVID-19 pandemic had affected every aspect of life and that solutions were all around us, in nature. Key lessons were presented from the network's programmes, including Community Development & Knowledge Management for the Satoyama Initiative (COMDEKS), for institutionalising landscape and seascape approaches in national and sub-national policies.

Experiences from Ecuador, Fiji, Niger, Turkey, and Viet Nam were shared during the event and created a space for beneficial knowledge sharing and exchanges of localised best practices for applying landscape and seascape approaches to living in harmony with nature. The event was co-organised by the Institute for Global Environmental Strategies (IGES); the Ministry of the Environment, Government of Japan; the CBD Secretariat; United Nations Development Programme (UNDP); Global Environment Facility Small Grants Programme (GEF SGP); and UNU-IAS. For details about the event, see [here](#).

### International Forum for Sustainable Asia and the Pacific (ISAP) 2021 Thematic Track Session on the Satoyama Initiative

*2 December 2021:* The session titled, “Landscape Approaches for Biodiversity, Climate Change and Sustainable Development Co-benefits” was held online as a Thematic Track Session of ISAP 2021 in partnership with UNU-IAS and the Institute for Global Environmental Strategies (IGES). The session presented two case studies from IPSI members World Agroforestry Centre and VICAM: Vicuñas, Camélidos y Ambiente, with experience in socioecological production landscapes and seascapes (SEPLS). The World Agroforestry Centre presented the first case study, providing insights from Sumatra, Indonesia on enhancing adaptation for improving upland livelihood and landscape. The second case study, “South American Camelids as biocultural components in the Andean Altiplano of Argentina”, was delivered by VICAM. The work of the Satoyama Initiative was highlighted for providing a platform to share data and case studies gathered by members through first-hand experience. For more information, see [here](#).





## The Convention on Biological Diversity 2022:

### Twenty-fourth Meeting of the Subsidiary Body on Scientific, Technical and Technological Advice (SBSTTA 24), Third Meeting of the Subsidiary Body on Implementation (SBI 3), and Third Meeting of the Open-ended Working Group on the Post-2020 Global Biodiversity Framework (WG2020-3)

14-19 March: Due to the COVID-19 pandemic, CBD meetings were not held in-person in over two years. The resumed sessions of the CBD took place in Geneva, Switzerland to prepare the post-2020 global biodiversity framework to be adopted at COP15 in late 2022. As usual, IPSI was well represented and participated actively in the meetings. Three side events were held related to IPSI activities:

- **Mainstreaming Landscape Perspectives into the Post-2020 Global Biodiversity Framework**

17 March 2022: The event was co-organised by the IPSI Secretariat at UNU-IAS, PBL Netherlands Environmental Assessment Agency; and the Ministry of the Environment, Government of Japan.



- **Integrating Landscape Approaches Into National Biodiversity Strategy and Action Plans (NBSAPs)**

18 March 2022: The event was co-organised by UNU-IAS; IGES; UNDP; and the Ministry of Environment, Government of Japan.

- **Making OECMs Work: Production Landscapes for Effective Area-based Conservation.**

24 March 2022: The event was co-organised by the IPSI Secretariat at UNU-IAS; Conservation International (CI); the United Nations Conference on Trade and Development (UNCTAD); Ministry of the Environment, Government of Japan; and the International Union for Conservation of Nature (IUCN).



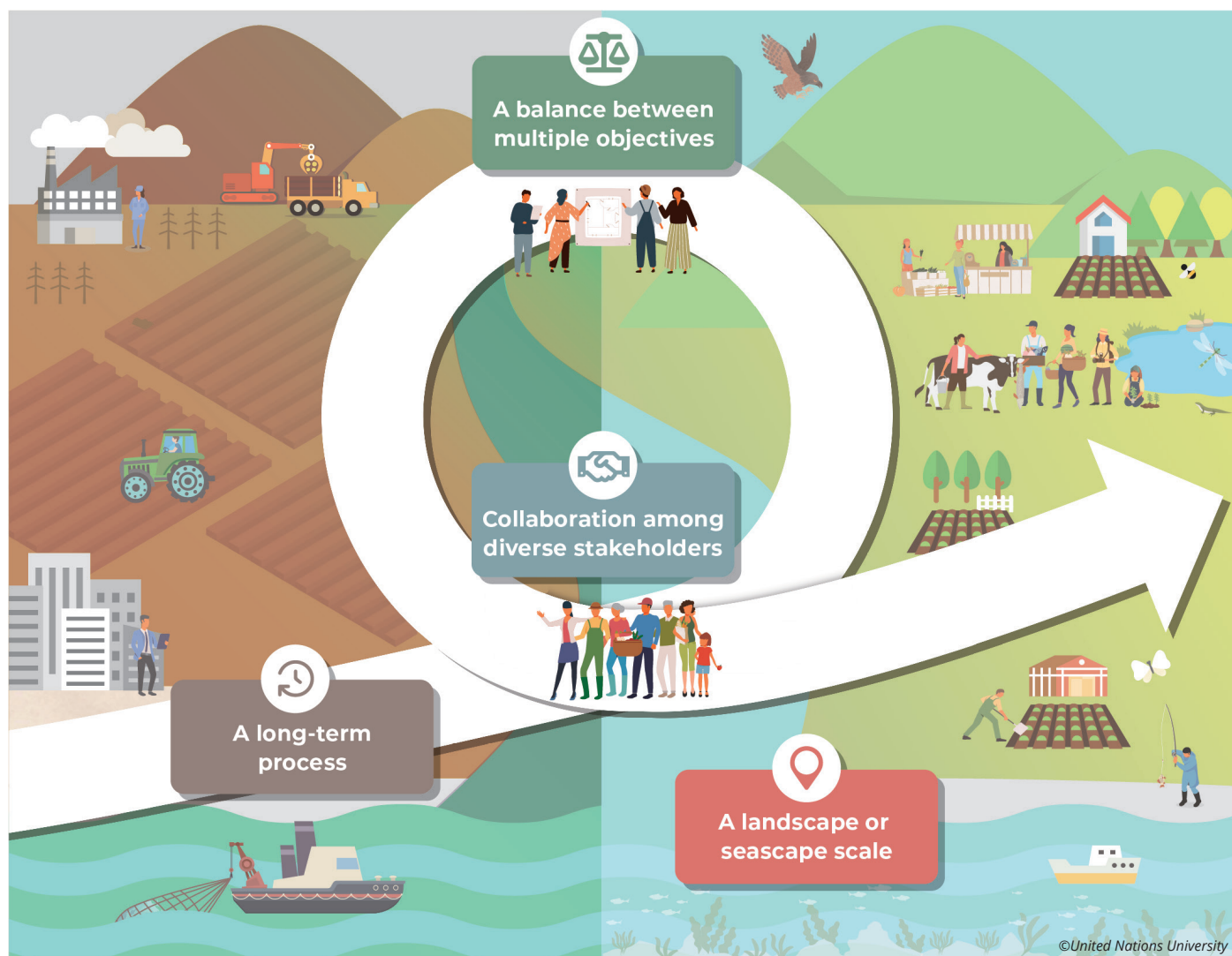


## COLLABORATIVE ACTIVITIES UPDATES

IPSI endorsed three new collaborative activities, bringing the total number to 55, of which 25 have been reported as successfully completed. The newly endorsed activities are:

### DEVELOPMENT OF A MANUAL ON APPLICATION OF LANDSCAPE APPROACHES TO NATIONAL BIODIVERSITY STRATEGY AND ACTION PLANS (NBSAPS)

United Nations University Institute for the Advanced Study of Sustainability (UNU-IAS); The Institute for Global Environmental Strategies (IGES); The Secretariat of the Convention on Biological Diversity (SCBD).





## PUBLICATION OF A BOX SET OF FOUR PICTURE BOOKS ON SEPLS

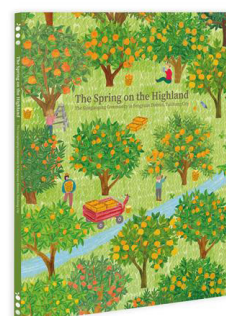
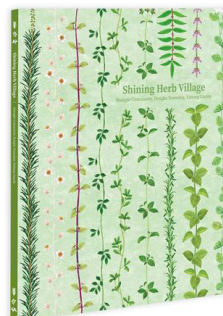
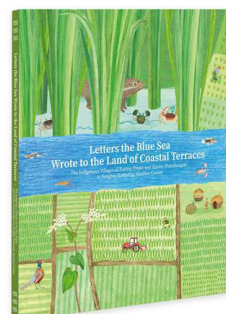
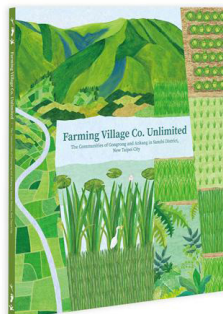
Soil and Water Conservation Bureau (SWCB); Forest Bureau; Hualien District Agricultural Research and Extension Station; National Chung-Hsin University; National Dong-Hwa University; SWAN International, Taiwan Landscape Environment Association (TLEA).

The books were published in Chinese, English, and Japanese.

From left to right:

- **Farming Village Co. Unlimited**
- **Letters the Blue Sea Wrote to the Land of Coastal Terrace**
- **Shining Herb Village**
- **The Spring on the Highland**

They can be purchased at [kingstone.com](http://kingstone.com)



## IFUGAO-NOTO SATOYAMA MEISTERS EXCHANGE

Ifugao Provincial Government; Ifugao State University; Kanazawa University; Noto Satoyama Satoumi Meisters Network; Ifugao Satoyama Meister Network; United Nations University Institute for the Advanced Study of Sustainability (UNU-IAS).





The IPSI Secretariat has received updates from some ongoing collaborative activities.

The **Satoyama Development Mechanism (SDM)** administered its ninth round of funding in 2021, providing seed funding to six SEPLS-related projects around the world. SDM sub-grant recipients selected in 2021 are:

- **College of Natural Resources, Royal University of Bhutan**, [Academic, Educational and/or Research Institute, Bhutan]  
["Exploring integration of the SEPLS approach into management of the Buli watershed"](#)
- **Community Based Environmental Conservation (COBEC)**, [NGO, Kenya]  
["Marereni Community Blue Carbon Initiative Feasibility Assessment and Stakeholder Outreach"](#)
- **Culture Identity and Resources Use Management (CIRUM)**, [NGO, Vietnam]  
["Assessment of Red Dao local knowledge on herbal bathing and forest protection"](#)
- **Daluhay Daloy ng Buhay, Inc (DALUHAY)**, [NGO, Philippines]  
["Institutionalising Indigenous Food Systems of the Sierra Madre Biodiversity Corridor and the North Philippine Sea Bioregion"](#)
- **Institute for Sustainable Development Strategy" Public Fund (ISDS)**, [NGO, Kyrgyz]  
["Safeguarding wetland ecosystems and pastoral communities in the Kyrgyz Mountains"](#)
- **Small Action For Enterprise (SAFE GHANA)**, [NGO, Ghana]  
["Participatory Restoration of Keta's Socio-ecological Production Landscapes and Seascapes"](#)

Since its establishment in 2013, the SDM has supported 54 projects in 25 countries and regions across the world.

For further details including call for application and project selection information are available on the [SDM website](#). For past and current SDM projects, see [here](#).



• Selected SDM projects 2021



## The Community Development and Knowledge Management for the Satoyama Initiative (COMDEKS)

The Community Development and Knowledge Management for the Satoyama Initiative (COMDEKS) was launched in 2011 as an IPSI flagship. COMDEKS is a unique global programme, funded by the Japan Biodiversity Fund, implemented by the United Nations Development Programme (UNDP), in partnership with the Ministry of the Environment Government of Japan (MOEJ), the Secretariat of the Convention on Biological Diversity (SCBD), and the United Nations University-Institute of Advanced Studies of Sustainability (UNU-IAS). Designed to be community driven, it supports local community activities to maintain and rebuild SEPLS. Working through the Global Environmental Facility Small Grants Programme (GEF-SGP), of UNDP, COMDEKS provides small grants to local community organisations to develop sound biodiversity management and sustainable livelihood activities in order to maintain, rebuild, and revitalize SEPLS. The project collects and distributes knowledge and experiences from successful on-the-ground actions for replication and upscaling in other parts of the world. COMDEKS grant making is expected to generate key lessons on community-based best practices to maintain and rebuild SEPLS toward the realization of “societies in harmony with nature”, as defined as the vision of the Satoyama Initiative.

COMDEKS completed its third phase, running from 2020 to March 2022. SCBD, UNDP, and MOEJ agreed in 2019 to the extension. Albeit the COVID-19 pandemic affected the project’s timeline and plans, capacity development projects promoting institutional and financial sustainability of SEPLS were conducted in 10 countries: Bhutan, Cambodia, Costa Rica, Ecuador, El Salvador, Ghana, Fiji, Mongolia, Niger and Turkey.

COMDEKS 3 has been able to promote active knowledge sharing through the organization of a series of national and sub-national virtual and in-person hybrid policy dialogues for sustainability and best practices on SEPLS. Lessons learned from the implementation of COMDEKS Phase 3 were compiled into a report that will be disseminated through the global network of 127 country programmes participating in the GEF Small Grants Programme, IPSI, and other partners worldwide. The report will highlight how SEPLS can be considered in Other Effective area Based Conservation Measure (OECMs).

---

Descriptions of these IPSI Collaborative Activities, proposal forms, and reports of completed activities can be found on the IPSI website Collaborative Activities page [here](#).



Credit: United Nations Development Programme



Credit: Artam Hoomat/Unsplash



Credit: Eduardo Prim/Unsplash



# KNOWLEDGE PRODUCT HIGHLIGHTS

IPSI and its members produced a large number of publications and other knowledge products related to furthering knowledge related to SEPLS during the year. A few highlights were:

## Policy Briefs

In partnership with its host, the United Nations University Institute for the Advanced Study of Sustainability (UNU-IAS), the IPSI Secretariat published two policy briefs in 2021.

- ### Transformative Change for Sustainability: Nurturing Seeds of Change in Socio-Ecological Production Landscapes & Seascapes

The brief provides recommendations for advancing transformative change in socio-ecological production landscapes and seascapes (SEPLS) — areas where sustainable production activities and resource management can result in societies in harmony with nature. The brief identifies effective methodologies, building on local innovations fostered through adaptive co-management, to build social-ecological resilience and advance global agendas including the Sustainable Development Goals (SDGs) and the 2050 Vision for Biodiversity. This publication offers three guiding principles for policymakers and other stakeholders to promote transformative change, by taking advantage of “seeds of change” for sustainability that are growing in landscapes and seascapes. It is authored by UNU-IAS researchers and IPSI Secretariat members Maiko Nishi, Suneetha M. Subramanian, and Himangana Gupta.

The policy brief is available for download from UNU Collections. Please go [here](#).

United Nations University  
Institute for the Advanced Study of Sustainability

## POLICY BRIEF

No. 24, 2021

### Transformative Change for Sustainability: Nurturing Seeds of Change in Socio-Ecological Production Landscapes & Seascapes

Maiko Nishi, Suneetha M. Subramanian, and Himangana Gupta

#### Highlights

Transformative change in socio-ecological production landscapes and seascapes (SEPLS) builds on local innovations fostered through adaptive co-management to enable socio-ecological resilience. Through a systemic approach to facilitate integration across levels and sectors, it advances multiple agendas to address fundamental local needs as well as global goals including the 2030 Agenda for Sustainable Development and the 2050 Vision for Biodiversity.

#### Recommendations:

- Ensure that actions are driven by local communities based on values, priorities, and authority over resources within SEPLS is equitably shared.
- Apply systemic and transdisciplinary approaches to foster “niche innovations” and realize sustainable solutions at multiple scales.
- Facilitate multi-level networking grounded in local initiatives and promote open learning, building on integrative, participatory, and inclusive assessments of socio-ecological well-being.

#### Transforming the World by 2030

With the adoption of the 2030 Agenda for Sustainable Development, 193 Member States pledged to transform our world, shifting onto a sustainable and resilient path by 2030 (UN 2015). If successful, progress to realize towards transformative change, however, global goals for sustainability will not be met, including those set out in the 2030 Agenda and the 2050 Vision for Biodiversity (IPBES 2019).

Transformative change is defined by the Intergovernmental Science-Policy Platform on Biodiversity and Ecosystem Services (IPBES) as a “fundamental, system-wide reorganization across technological, economic and social factors, including paradigms, goals and values.” IPBES points to five key levers for generating transformative change (e.g., incentives, conventional cooperation, which can be collaboratively applied at multiple scales) in its vision of a good life, values to advance broader impact (IPBES 2019). Yet, there remains a lack of clear understanding on the meaning of transformative change and how it can be realized (Chan 2019).

This policy brief offers three guiding principles for policymakers and other stakeholders to promote transformative change, by taking advantage of “seeds of change” for sustainability that are growing in landscapes and seascapes. It draws from

ias.unu.edu

- ### Resilience in Landscapes & Seascapes: Building Back Better from COVID-19

The brief provides recommendations for strengthening resilience in landscapes and seascapes to facilitate transformative recovery from crises such as COVID-19 through green recovery. It draws from experiences and lessons learned in applying the [Indicators of Resilience in Socio-Ecological Production Landscapes and Seascapes \(SEPLS\)](#), an assessment tool developed by UNU-IAS, Bioversity International, Institute for Global Environment Strategies, and the United Nations Development Programme under IPSI as part of a Collaborative Activity. The brief is authored by Maiko Nishi, Yoji Natori, and Devon R. Dublin. It is based on research conducted as part of the UNU-IAS programme Biodiversity & Society, engaging members of the International Partnership for the Satoyama Initiative (IPSI) and other experts from across the globe.

The policy brief is available for download at UNU Collections. Please go [here](#).

United Nations University  
Institute for the Advanced Study of Sustainability

## POLICY BRIEF

No. 26, 2021

### Resilience in Landscapes & Seascapes: Building Back Better from COVID-19

Maiko Nishi, Yoji Natori, and Devon R. Dublin

#### Highlights

Strengthening resilience in landscapes and seascapes facilitates transformative recovery from crises such as COVID-19 and the shift towards a more sustainable future. Resilience assessments at the landscape or seascape level are crucial to recognize changes in human-nature interactions and develop strategies for building resilience while raising the capacities of local communities.

- Integrate trade-off analysis in resilience assessments, actively incorporating knowledge and expertise related to health and well-being.
- Periodically assess socio-ecological resilience to ensure and enhance adaptive management of landscapes and seascapes and mobilize resources for building resilience.
- Foster and extend social capital in the form of bonding, bridging, and linking to accelerate recovery from shocks, minimize suffering, and promote preventive strategies.

#### Transformative Recovery for Resilience

The COVID-19 crisis has exposed pre-existing vulnerabilities across society, including mental health systems, food supply chains, and global markets — and clearly illustrated that the pursuit of sustainable pathways will inevitably fail if we continue business-as-usual practices. The main driver of human pandemics, almost all of which originate in animals, are anthropogenic — including land-use change, agricultural expansion and intensification, and wildlife trade and consumption. With the continued rise in these human activities, the risk of pandemics is increasing faster than ever, and we will enter a “pandemic era” unless urgent action is taken towards transformative change (IPBES 2020). To build back better from COVID-19 and pursue transformative recovery for a sustainable future, it is essential to reduce vulnerability and strengthen resilience to future shocks (UN 2020). Many complex social-ecological systems at the local level have proven to be resilient to shocks like COVID-19 by providing food, water and energy to users of supply chain collapse. They also contribute to addressing climate change, conserving biodiversity, and improving human well-being (Ruckstuhl et al. 2020). Reinforcing such resilience is an equitable and desirable manner; however, remains an enormous challenge for policymakers, planners, and regional managers (Lee et al. 2020).

ias.unu.edu

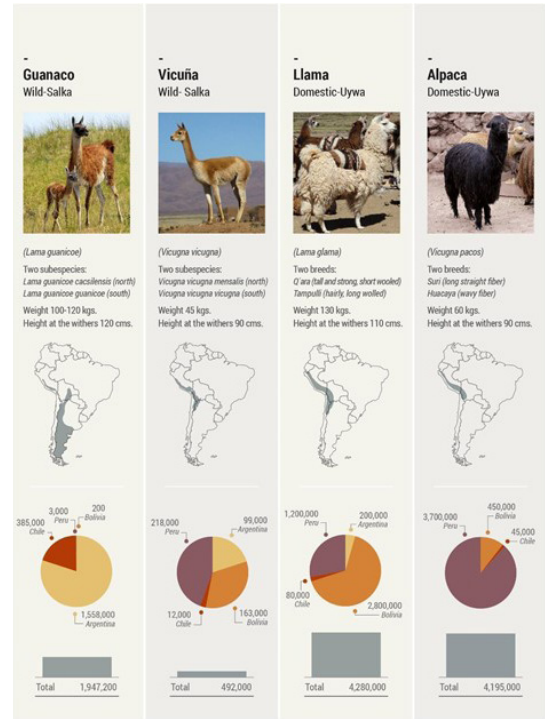


## IPSI Case Studies

As of March 2022, 251 case studies are now publicly available on the IPSI website, and this number continues to grow as all IPSI members are expected to submit a case study as part of their membership. Various research activities are also ongoing to synthesize and extract lessons learned and good practices from the case studies.



Case Study: Government - Community collaboration for natural ecological sustainability - Yi Hsin Community, Nantou



Case Study: South American Camelids as biocultural components in the Andean Altiplano of Argentina

## Communications and outreach

The IPSI Secretariat updates the IPSI website with publications, news and other relevant resources. The Secretariat also produces newsletters in both [English](#) and [Japanese](#) that now reach over a thousand readers. From January 2022, the IPSI Secretariat made changes to the format and schedule of its newsletters. A mini-newsletter, IPSI Live Updates, was introduced to announce time sensitive events to make sure subscribers do not miss important deadlines. The monthly newsletter was changed to a quarterly schedule to offer more dynamic content to its subscribers.

Go to [satoyama-initiative.org](https://satoyama-initiative.org)



2021.04.27 | Research and Policy | SITR |

(2020) Vol. 6: Fostering Transformative Change for Sustainability in the Context of Socio-Ecological Production Landscapes and Seascapes (SEPLS)



2021.01.05 | Publicity and IPSI-related documents | Case Study Reports |

Implementing the Satoyama Initiative for the Benefit of Biodiversity and Human Well-being



2021.01.05 | Event Reports |

Role of socio-ecological production landscapes and seascapes in the face of COVID-19 and towards transformative change



**Welcome to IPSI Newsletter!**  
Dear IPSI members and friends,

Welcome to the first IPSI Newsletter of 2022! We have a lot of new and exciting things planned for this year, like the mini newsletter we sent earlier this month and the new look of IPSI's monthly newsletter.

January's newsletter contains important announcements about grants opportunities, an IPSI survey, and much more. We also received from IPSI members news about receiving awards for their rural sustainability programme and a case study on socio-ecological production landscapes of three ethnolinguistic enclaves in the Dagestan high Caucasus.

As always, we hope you will contact us to submit any new case studies, news about your activities, or if you have any questions or comments.

IPSI Secretariat

### Thank you for your abstracts!

We would like to thank everyone that submitted an abstract to be considered for the eighth volume of the annual series **Satoyama Initiative Thematic Review (SITR 8): "Ecosystem restoration through managing socio-ecological production landscapes and seascapes (SEPLS)"**. If your submission was shortlisted, a full manuscript will be requested by **20 February 2022**.

### Announcements



#### Survey on IPSI activities

We are glad to invite IPSI members to an online survey to collect your views about the accomplishments of the Satoyama Initiative in the last decade and your opinion about priority themes and activities for the upcoming period.



## IPSI STEERING COMMITTEE & SECRETARIAT

### IPSI Steering Committee

Meetings of the IPSI Steering Committee were organised in July and December, approving 12 new members and three IPSI Collaborative Activities.

A sub-committee was established to update the partnership's strategy and action plan, with two meetings organised to discuss IPSI's role in the new decade. Meetings took place online in September and December 2021 and the new strategy and action plan will be published in 2022.

The IPSI Secretariat would like to acknowledge the efforts of the continuing IPSI member organisations who offer their time and hard work to serve on the Steering Committee. The IPSI Steering Committee currently consists of 18 member organisations:

- Chair: Ghana National Biodiversity Committee
- Association for the Agroindustry Development in Camana (APAIC)
- Conservation International
- Conservation Solutions Afrika
- Forest Peoples Programme
- Institute for Global Environmental Strategies (IGES)
- Kathmandu Forestry College (KAFCOL)
- Marine Ecosystems Protected Areas (MEPA) Trust
- Ministry of Environment, Cambodia
- Ministry of the Environment, Government of Japan
- Nature and Livelihoods
- Platform for Agrobiodiversity Research (PAR)
- Sabah Biodiversity Centre, Natural Resources Office Sabah, Malaysia
- Secretariat of the Convention on Biological Diversity (SCBD)
- United Nations Development Programme (UNDP)
- United Nations University
- University of Georgia, Department of Geography, Neotropical Montology Collaboratory
- University of Sarajevo, Faculty of Science

### IPSI Secretariat

The IPSI Secretariat continues to be hosted by the United Nations University Institute for the Advanced Study of Sustainability (UNU-IAS) in Tokyo, Japan. We welcomed Mr. Bruno Leles as the Partnership Associate and Ms. Alexandra Franco Guajardo as our Communications Associate. Dr. Himangana Gupta, JSPS-UNU post-doctoral fellow went back to India and our long-time staff Dr. Evonne Yiu departed from UNU-IAS at the end of March 2022. We express our sincere appreciation for their contributions over the past years.

As of May 2022, the IPSI Secretariat staff is made up of:

- Dr. Tsunao Watanabe, Director
- Ms. Makiko Yanagiya, Deputy Director, Programme Coordinator
- Dr. Maiko Nishi, Research Fellow
- Dr. Evonne Yiu, Research Fellow
- Dr. Suneetha Subramanian, Research Fellow
- Mr. Bruno Leles, Partnership Associate
- Dr. Himangana Gupta, Post-Doctoral Fellow
- Ms. Alexandra Franco Guajardo, Communications Associate
- Ms. Madoka Yoshino, Programme Associate
- Ms. Miyuki Noguchi, Programme Associate
- Ms. Kanako Yoshino, Programme Assistant
- Ms. Yoshino Nakahara, Administrative Assistant

We at the IPSI Secretariat wish to convey our big thanks to all the members for their contributions and continued support made in expanding and strengthening the partnership. We look forward to continuing to work closely with all IPSI partners and friends through 2022 and beyond.



## ANNEX

### LIST OF IPSI MEMBERS AS OF MARCH 2022

Organisation	Location of head office
<b>National governmental organisation</b>	
Environment Protection Authority, Yemen	Yemen
Ethiopian Biodiversity Institute	Ethiopia
Ghana National Biodiversity Committee	Ghana
Ministry of Agriculture, Food and Forestry Policies, Italy	Italy
Ministry of Commerce, Industry and Environment, Directorate General for Environment, Timor Leste	Timor-Leste
Ministry of Environment and Forest Resources, Togo	Togo
Ministry of Environment and Protection of Nature, Cameroon	Cameroon
Ministry of Environment and Tourism, Mongolia	Mongolia
Ministry of Environment and Water Resources, Chad	Chad
Ministry of Environment, Cambodia	Cambodia
Ministry of Environment, Ecology and Forests, Madagascar	Madagascar
Ministry of Environment, Gabon	Gabon
Ministry of Environment, Peru	Peru
Ministry of Environment, Republic of Korea	Republic of Korea
Ministry of Forestry and Environment, Gambia	Gambia
Ministry of Forests and Soil Conservation, Nepal	Nepal
Ministry of Natural and Resources and Environment, Thailand	Thailand
Ministry of Natural Resources, Energy and Mining, Malawi	Malawi
Ministry of the Environment, Japan	Japan
National Environmental Council for Sustainable Development, Executive Secretariat, Niger	Niger
National Forest and Wildlife Service (SERFOR), Peru	Peru
National System of Conservation Areas (SINAC), Costa Rica	Costa Rica
Other government affiliated organisation	(Number of organisations 9)
Fisheries Research Institute, Council of Agriculture, Executive Yuan	Chinese Taipei
Forestry Bureau, Council of Agriculture, Executive Yuan	Chinese Taipei
Huascaran National Park, National Service of Protected Natural Areas (SER-NANP), Peru	Peru
Institute for Fundamental Researches on Tropical Agriculture (INIFAT)	Cuba
Japan International Cooperation Agency (JICA)	Japan



Kenya Wetlands Biodiversity Research Team (KENWEB)	Kenya
National Herbarium and Botanical Gardens, Malawi	Malawi
Natural Resources Office, Sabah	Malaysia
Soil and Water Conservation Bureau (SWCB), Executive Yuan	Chinese Taipei
<b>Local governmental organisation</b>	<b>Number of organisations: 17</b>
Agriculture Department, New Taipei City Government	Chinese Taipei
Aichi Prefectural Government	Japan
Committee of Intermunicipal Associations of the State of Jalisco (CAIEJ)	Mexico
Echizen City	Japan
Fukui Prefectural Government	Japan
Hawaii State Department of Agriculture	USA
Hualien District Agricultural Research and Extension Station of the Council of Agriculture	Chinese Taipei
Hyogo Prefectural Government	Japan
Ishikawa Prefectural Government	Japan
Kumamoto Prefectural Government	Japan
Liao Ning Province Authority of Liaohe River	China
Liao Ning Province Development & Promotion Center of Liaohe River Reserve	China
Nagoya City	Japan
Nobeoka City	Japan
Sado City	Japan
Toyooka City	Japan
Wakasa Town	Japan
<b>Non-governmental or civil society organisation</b>	<b>Number of organisations: 123</b>
AEON Environmental Foundation	Japan
A Rocha Ghana	Ghana
Accelerated Rural Development Organisation (ARDO)	Ghana
Advocates for Biodiversity Conservation (ABC-Ghana)	Ghana
Amis de l'Afrique Francophone- Bénin (AMAF-BENIN)	Benin
Applied Environmental Research Foundation (AERF)	India
ASEAN Green Justice Network (AGREEN)	Myanmar
Asociación de campesinos vecinos del Parque Natural Nacional Serranía de los Yariguies (ASOCAPAYARI)	Colombia
Asociación para la Investigación y el Desarrollo Integral (AIDER)	Peru
Asociación Pro Desarrollo Agroindustrial de Camana (APAIC)	Peru
Association for the Sustainable Development of Rural San Jose (ADESSARU)	Costa Rica
Association of Forest and Hunting Workers of Serbia – Forest and Hunting	Serbia
Associazione Grani Antichi (Ancient Grains Association) Montespertoli	Italy
Balipara Tract and Frontier Foundation	India
Bhutan Ecological Society	Bhutan
Bioversity International	Italy
BirdLife International	UK
Borneo Conservation Trust Japan	Japan



Bureau for Regional Outreach Campaigns (BROC)	Russia
Center for Green Economy Development – Nepal (CGED – Nepal)	Nepal
CEPA Japan	Japan
Chinese Society for Environmental Education (CSEE)	Chinese Taipei
Circle for Conservation of Natural Resources NGO (ONG CeSaReN)	Benin
Civil Society Organizations’ Network for Sustainable Agriculture and Environment in East Africa (CISONET)	Uganda
Clarendon Parish Development Committee Benevolent Society	Jamaica
Community Agriculture and Environmental Protection Association Cameroon (CAEPA)	Cameroon
Community Based Environmental Conservation (COBEC)	Kenya
Community Entrepreneur Development Institute (CENDI)	Viet Nam
Conservation Alliance International	Ghana
Conservation International	USA
Conservation Solutions Afrika	Kenya
Corporación Ambiental y Forestal del Pacífico (CORFOPAL)	Colombia
Cultivate a Cloud NPO	Japan
Dahari	Comoros
Daluhay	Philippines
Earthwatch Institute, Japan	Japan
EcoAgriculture Partners	USA
Environment and Development Association JASIL	Mongolia
Environment and Rural Development Foundation (ERuDeF)	Cameroon
Environmental Education Centre Zapovedniks	Russia
Environmental Ethics Foundation of Taiwan (EEFT)	Chinese Taipei
Environmental Protection and Conservation Organisation (EPCO)	Mauritius
Environmental Protection Information Centre (EPIC)	Uganda
Farmers’ Seed Network	China
Fondazione Romualdo del Bianco - Life Beyond Tourism	Italy
Forest Peoples Programme (FPP)	UK
Forum for Law, Environment, Development and Governance (FLEDGE)	India
Fostering Education & Environment for Development, Inc. (FEED)	Philippines
Foundation for Research and Social Development (FIDES)	Ecuador
Friends of the Earth Japan (FoE Japan)	Japan
Fuli Farmers Association	Chinese Taipei
Fundación Semillas de Vida, A.C.	Mexico
German Association for Landcare (DVL)	Germany
Grains of Hope Mobilisation (GOHMO)	Malawi
Green Development Advocates	Cameroon
Green Initiative NGO	Mongolia
Green Islands Foundation	Seychelles
Green Senegal	Senegal
Greenglobe Ghana	Ghana

Groupe d'Intervention pour l'Encadrement et la Réhabilitation Intégrale (GIERI) / Landcare Network DRC	DR Congo
HATOF Foundation	Ghana
Hokusetsu Satoyama Museum Steering Council	Japan
Hydrology for the Environment, Life and Policy (HELP) Davao Network	Philippines
Initiative for Community Health (INCH)	Malawi
Institute Acao Verde	Brazil
Institute for Societal Advancement	India
Institute for Sustainable Development Strategy (ISDS) Public Foundation	Kyrgyzstan
Institute of Environment Rehabilitation and Conservation (ERECON)	Japan
International Agency for the Protection of Biocultural Landscapes and for a New Rurality (AGER)	Italy
International Cooperation and Development Fund (ICDF)	Chinese Taipei
International Council for Game and Wildlife Conservation (CIC)	Hungary
International Lake Environment Committee Foundation (ILEC)	Japan
Iwokrama International Centre for Rainforest Conservation and Development	Guyana
Japan Environmental Education Forum (JEEF)	Japan
Japan Habitat Association	Japan
Landcare Association Neumarkt	Germany
Landcare International	Kenya
Live & Learn Environmental Education	Cambodia
M. S. Swaminathan Research Foundation (MSSRF), Community Agrobiodiversity Centre	India
Marine Ecosystems Protected Areas (MEPA) Trust	Antigua and Barbuda
MELCA - Ethiopia	Ethiopia
Micronesia Conservation Trust	Federated States of Micronesia
Nagenahiru Foundation	Sri Lanka
National Association for the Conservation of Nature (ANCON)	Panama
Nature and Livelihoods	Uganda
Nature Tropicale	Benin
Network for Coexistence with Nature	Japan
Nomi Satoyama Conservation Society	Japan
Ny Tanintsika	Madagascar
Organisation for Community Development (OCD)	Pakistan
Overseas Environmental Cooperation Center	Japan
Peruvian Association of Bamboo	Peru
Pgakenyaw Association for Sustainable Development (PASD)	Thailand
Platform for Agrobiodiversity Research (PAR)	Italy
Pogany-Havas Association	Romania
Royal Society for Protection of Nature	Bhutan
Satoyama Initiative NGO, Mongolia	Mongolia
Save Aseed For The Future (SAFE)	Uganda
Seeking To Equip People (STEP) Guinee NGO	Guinea



Shumei International	Japan
Social Policy Ecology Research Institute (SPERI)	Viet Nam
Society for Environment Conservation and Agriculture Research and Development (SECARD)	Nepal
Society for Wildlife and Nature (SWAN) International	Chinese Taipei
South Asian Forum for Environment (SAFE)	India
Suganthi Devadason Marine Research Institute (SDMRI)	India
Taiwan Ecological Engineering Development Foundation	Chinese Taipei
Taiwan Landscape Environment Association (TLEA)	Chinese Taipei
Taiwan Wild Bird Federation	Chinese Taipei
Tambo NPO (Rice Paddies Network Japan)	Japan
The Goat Trust	India
The Energy and Resources Institute (TERI)	India
The Nature Conservancy	Australia
Tropical Institute of Ecological Sciences	India
Tropical Science Center	Costa Rica
Tse-Xin Organic Agriculture Foundation	Chinese Taipei
Urato's "Children of the Sea" Revitalizing Project	Japan
VICAM: Vicuñas, Camélidos y Ambiente	Argentina
Vivamos Mejor	Guatemala
Wildlife Conservation Society Madagascar	Madagascar
Wildlife Watch Group	Nepal
World Agroforestry Centre (ICRAF)	Kenya
World Wildlife Fund (WWF) USA	USA
World Wildlife Fund West Africa Programme Office (WWF WAMPO)	Senegal
<b>Indigenous or local community organisations</b>	<b>Number of organisations: 13</b>
Association for Nature and Sustainable Development (ANDES)	Peru
Culture Identity and Resources Use Management (CIRUM)	Viet Nam
Fundacion para la Promocion del Conocimiento Indigena	Panama
Indigenous Knowledge and Peoples Foundation (IKAP)	Thailand
Indigenous Partnership for Agrobiodiversity and Food Sovereignty (TIP)	Italy
Indigenous Peoples' Biocultural Climate Change Assessment (IPCCA)	Peru
Inter Mountain People's Education and Culture in Thailand Association (IMPECT)	Thailand
Kanuri Development Association (KDA)	Nigeria
Nepal Indigenous Nationalities Preservation Association (NINPA)	Nepal
Nirmanie Development Foundation (NDF)	Sri Lanka
Small Actions for Enterprise (SAFE) Ghana	Ghana
Sotz'il	Guatemala
Tebtebba - Indigenous Peoples' International Centre for Policy Research and Education	Philippines
Academic, Educational and / or Research Institute	(Number of organisations 56)
Agrarian Research Foundation (ARF)	Bangladesh
American Museum of Natural History, Center for Biodiversity and Conservation	USA

An Giang University, Research Center for Rural Development (RCRD)	Viet Nam
Austrian Academy of Sciences, Institute for Interdisciplinary Mountain Research	Austria
Berlin-Brandenburg Academy of Sciences and Humanities, Ecosystem Services Research Group	Germany
Caraga State University, Center for Research in Environmental Management and Eco-governance (CRÈME)	Philippines
Chinese Academy of Science, Centre for Chinese Agricultural Policy	China
ERuDeF University Institute of Applied Biodiversity Sciences	Cameroon
Helmholz Centre for Environmental Research (UFZ)	Germany
Ifugao State University	Philippines
Institute for Global Environmental Strategies (IGES)	Japan
Institute of Ecology and Sustainable Development	Russia
Integrated Organic Farming Systems Research Centre (IORC)	Indonesia
Islands Knowledge Institute (IKI)	Solomon Islands
Jawaharlal Nehru University, School of Environmental Science	India
Kanazawa University	Japan
Kathmandu Forestry College (KAFCOL)	Nepal
Kenya Forestry Research Institute (KEFRI)	Kenya
Laikipia Wildlife Forum	Kenya
Leuphana University Lueneburg	Germany
Lilongwe University of Agriculture & Natural Resources, Department of Forestry	Malawi
Minzu University of China, College of Life and Environmental Science	China
Mokpo National University, Institution for Marine and Island Cultures (MIC)	Republic of Korea
National Dong-Hwa University	Chinese Taipei
National Pingtung University of Science and Technology	Chinese Taipei
National Yunlin University of Science and Technology (YunTech)	Chinese Taipei
Niigata University, Centre for Toki and Ecological Restoration	Japan
Renmin University of China, Centre for Resource and Forestry Policy Study (CFNRPS)	China
Research Centre of the Slovenian Academy of Sciences and Arts (ZRC SAZU)	Slovenia
Royal University of Bhutan, College of Natural Resources	Bhutan
Swedish University of Agricultural Sciences, Swedish Biodiversity Centre	Sweden
Tohoku University, Graduate School of Life Sciences	Japan
Tribhuvan University, Amrit Campus, Institute of Science & Technology	Nepal
Universidade Federal da Fronteira Sul (UFFS)	Brazil
University of Cyprus	Cyprus
University of Development Studies (UDS), Faculty of Renewable Natural Resources	Ghana
University of Georgia, Geography Department, Neotropical Montology Collaboratory	USA
University of Gloucestershire, Countryside and Community Research Institute (CCRI)	UK



University of Hong Kong, Policy for Sustainability Lab of the Faculty of Social Sciences	China
University of Nairobi	Kenya
University of Natural Resources and Life Sciences (BOKU)	Austria
University of San Simón – AGRUCO	Bolivia
University of Santiago de Compostela, Higher Polytechnic School (EPS)	Spain
University of Sarajevo, Faculty of Science	Bosnia and Herzegovina
University of the Philippines Los Baños, College of Forestry and Natural Resources, Department of Social Forestry and Forest Governance	Philippines
University of the Philippines Open University (UPOU)	Philippines
University of the Punjab, Centre for Integrated Mountain Research (CIMR)	Pakistan
University of Tokyo, Graduate School of Agricultural and Life Sciences	Japan
University of Tokyo, Institute for Future Initiatives (IFI)	Japan
University of Vigo	Spain
Unnayan Onneshan	Bangladesh
Vellore Institute of Technology, Vellore	India
Vietnam National University, Hanoi (VNU)	Viet Nam
Yokohama National University	Japan
Yunnan University, National Research Centre for the Studies of the Ethnic Groups of China's South-Western Borderlands (SEGCSWB)	China
Zhejiang A & F University	China
<b>Industry or private sector organisation</b>	<b>Number of organisations: 27</b>
Aleph Inc.	Japan
Asahi Kasei Corporation	Japan
Back to Nature	Nepal
Brother Sales Ltd.	Japan
Canon Inc.	Japan
Chuetsu Pulp & Paper Co., Ltd	Japan
Coelacanth Shokudou. LLC (MUJUN)	Japan
Commemorative Foundation for the International Garden and Greenery Exposition, Osaka, Japan, 1990	Japan
Dell Japan Inc.	Japan
E Overseas Education Centre	Republic of Korea
Frontier Works Inc.	Japan
FRUTA FRUTA Inc.	Japan
Green TV Japan (TREE, Inc.)	Japan
Hewlett-Packard Japan, Ltd.	Japan
IORA Ecological Solutions	India
Kasho Maeno	Japan
LEAF Co., Ltd.	Japan
Lexmark International K.K.	Japan
Observer Ecological Consultant	Chinese Taipei
People Empowering & Development Alternatives (PEDA) International	Pakistan
PolisPlan	Australia

Seiko Epson Corporation	Japan
Sumitomo Forestry Co., Ltd	Japan
Taisei Corporation	Japan
The AgriBusiness Group - The New Zealand Sustainability Dashboard	New Zealand
TZR Technology	Malaysia
Yamada Keitei Co., Ltd	Japan
<b>Other</b>	<b>Number of organisations: 2</b>
The Council of Promoting Biodiversity in Rice Paddies Connected to Lake Biwa	Japan
Critical Ecosystem Partnership Fund (CEPF)	USA
<b>United Nations or other Intergovernmental organisation</b>	<b>Number of organisations: 14</b>
Convention on Biological Diversity (CBD) Secretariat	
Global Environment Facility (GEF) Secretariat	
International Centre for Integrated Mountain Development (ICIMOD)	
International Network for Bamboo and Rattan (INBAR)	
International Tropical Timber Organization (ITTO)	
International Union for Conservation of Nature (IUCN)	
Secretariat of the Pacific Regional Environment Programme (SPREP)	
United Nations Centre for Alleviation of Poverty through Sustainable Agriculture (UNCAPSA)	
United Nations Centre for Regional Development (UNCRD)	
United Nations Development Programme (UNDP)	
United Nations Educational Scientific and Cultural Organisation (UNESCO)	
United Nations Environment Programme (UNEP)	
United Nations Environment Programme - World Conservation Monitoring Centre (UNEP-WCMC)	
United Nations University (UNU)	
(Total number of organisations 283)	



---

## ANNEX

---

### EVENTS HISTORY

#### 2009

- International Experts Meeting on the Satoyama Initiative Concept (25 July 2009, Tokyo, Japan)
- Asia-Pacific Regional Workshop on the Satoyama Initiative Concept (1–3 October 2009, Penang, Malaysia)

#### 2010

- Global Workshop on the Satoyama Initiative (29–30 January 2010, Paris, France)
- CBD SBSTTA 14 and WGRI 3 Side Events “The Satoyama Initiative” (10 and 24 May 2010, Nairobi, Kenya)
- International Partnership for the Satoyama Initiative Preparatory Meeting (23–24 August 2010, Yamanashi, Japan)
- South America Regional Workshop on the Satoyama Initiative and its International Partnership (22 September 2010, Brasilia, Brazil)
- Launch of the International Partnership for the Satoyama Initiative at CBD COP 10 (19 October 2010, Nagoya, Japan)

#### 2011

- IPSI-1: The First IPSI Global Conference (10–11 March 2011, Nagoya, Japan)
- CBD SBSTTA 15 Side Event “Challenges and Hopes in Ecosystem Restoration” (8 November 2011, Montreal, Canada)

#### 2012

- IPSI-2: The Second IPSI Global Conference (13–14 March 2012, Nairobi, Kenya)
- Rio+20 Side Event “The Satoyama Initiative and the Green Economy” (18 June 2012, Rio de Janeiro, Brazil)
- ISAP 2012 Parallel Session and Expert Workshop “The Satoyama Initiative and Resilience—Pathways to a Sustainable Society” (23–24 July 2012, Yokohama, Japan)
- IUCN World Conservation Congress 2012 Workshop “Enhancing Resilience with Nature: Translating the Science and Practice of Ecosystem Restoration into Policy” (10 September 2012, Jeju, Republic of Korea)
- IPSI-3: The Third IPSI Global Conference (6–7 October 2012, Hyderabad, India)
- CBD COP 11 Side Events “Achievements and Further Development of the International Partnership for the Satoyama Initiative” and “Linking Community and Landscape Resilience” (11 and 12 October 2012, Hyderabad, India)

#### 2013

- Workshop on Indicators of Resilience in SEPLS (22–24 April 2013, Yokohama, Japan)
- Satoyama Initiative Regional Workshop for Asia (14–15 May 2013, Kathmandu, Nepal)
- ISAP 2013 Parallel Session “Green Economy and Satoyama Initiative: Building Resilient Societies at Local Level” and

---

Expert Workshop (22–24 July 2013, Yokohama, Japan)

- IPSI-4: The Fourth IPSI Global Conference (12–14 September 2013, Fukui, Japan)
- CBD SBSTTA 17 Side Event “An Indicators Approach to Understanding Resilience of Socio-ecological Production Landscapes and Seascapes: a Community-level Perspective” (15 October 2013, Montreal, Canada)
- 9th Pacific Islands Conference on Nature Conservation and Protected Areas Parallel Session “Challenges and Opportunities for the International Partnership for the Satoyama Initiative (IPSI) from Pacific Perspectives” (4 December 2013, Suva, Fiji)

## **2014**

- The Satoyama Initiative Regional Workshop for Europe (27–29 May 2014, Florence, Italy)
- ISAP 2014 Parallel Session “Benefits and Challenges of Community Engagement for the Sustainable Use of Biodiversity” and IPSI Case Study Experts Workshop (22–24 July 2014, Yokohama, Japan)
- IPSI-5: The Fifth IPSI Global Conference (4–5 October 2014, Pyeongchang, Republic of Korea)
- CBD COP 12 Side Events “Contribution to the Aichi Biodiversity Targets from the ground up: Engaging diverse communities and perspectives through the Satoyama Initiative” and “Mobilizing Resources for mainstreaming biodiversity into production landscapes and seascapes” (6 and 8 October 2014, Pyeongchang, Republic of Korea)
- IUCN World Parks Congress 2014 Sessions and Side Events (12–19 November 2014, Sydney, Australia)

## **2015**

- IPSI Case Study Workshop “Enhancing knowledge for better management of SEPLS” (24–26 June 2015, Tokyo, Japan)
- ISAP 2015 Parallel Session “Contributing to regional sustainability and resilience from SEPLS” (29 July 2015, Yokohama, Japan)
- Satoyama Initiative Regional Workshop for Africa (10–12 August 2015, Accra, Ghana)
- CBD SBSTTA 19 Side Event “Collaborative Resource Mobilization and Knowledge Facilitation through Global Partnership: Activities of the International Partnership for the Satoyama Initiative (IPSI)” (2 November 2015, Montreal, Canada)

## **2016**

- IPSI-6: The Sixth IPSI Global Conference (12–14 January 2016, Siem Reap, Cambodia)
- CBD SBSTTA 20 and SBI 1 Side Events “Collection and strategic use of knowledge for mainstreaming biodiversity into various sectors” and “Strategic actions to enhance implementation of the CBD: recent experiences of the International Partnership for the Satoyama Initiative in Africa and Asia” (26 April and 3 May 2016, Montreal, Canada)
- IPSI Case Study Workshop “Incorporating concepts and approaches of socio-ecological production landscapes and seascapes (SEPLS) into policy and decision-making” (25–27 May 2016, Tokyo, Japan)
- Satoyama Initiative Regional Workshop for Latin America and the Caribbean (27–29 June 2016, Cusco and Pisac, Peru)
- ISAP 2016 Parallel Session “Integrated landscape management: Effective approaches for translating knowledge into transformative actions” (13 July 2016, Yokohama, Japan)
- IUCN World Conservation Congress 2016 Sessions (1–5 September 2016, Honolulu, USA)
- CBD COP 13 Side Events “Strategic Action for Mainstreaming Biodiversity: Contributions of the International Partnership for the Satoyama Initiative (IPSI) to Biodiversity and Human Well-Being” and “Contributions of funding mechanisms under the Satoyama Initiative to mainstreaming biodiversity for well-being” (6 and 8 December 2016, Cancun, Mexico)



## 2017

- COMDEKS Global Knowledge Exchange Workshop (23–26 January 2017, San José, Costa Rica)
- Satoyama Initiative Regional Workshop in Sabah (18–20 April 2017, Kota Kinabalu, Malaysia)
- IPSI Case Study Workshop “Livelihoods and socio-ecological production landscapes and seascapes (SEPLS)” (28–30 June 2017, Tokyo, Japan)
- ISAP 2017 Parallel Session “Putting sustainability at the heart of landscape and seascape management: Key roles played by subnational and local governments” (26 July 2017, Yokohama, Japan)
- CBD SBSTTA 21 Side Event “Integrated Landscape Management in the UN Decade of Biodiversity 2010-2020 and Beyond: Achievements and Future Direction of the International Partnership for the Satoyama Initiative (IPSI)” (11 December 2017, Montreal, Canada)

## 2018

- CBD SBSTTA 22 and SBI 2 Side Events “Can a landscape approach bridge livelihood, science, and conservation? The Satoyama Initiative and the science-policy interface”, “Financing Landscape Management Approaches: Replication and Upscaling for Biodiversity and Sustainable Development”, and “Mainstreaming Biodiversity in Production Landscapes and Seascapes: Integrated Approaches in Design and Implementation of National Biodiversity Strategies and Action Plans (NBSAPs)” (5–12 May 2018, Montreal, Canada)
- IPSI Case Study Workshop “Sustainable use of biodiversity in socio-ecological production landscapes and seascapes (SEPLS) and its contribution to effective area-based conservation” (22-24 May 2018, Tokyo, Japan)
- ISAP 2018 Parallel Session “Sustainable Production Landscapes and Seascapes for Biodiversity, Human Livelihoods and Well-being” (19 July 2017, Yokohama, Japan)
- IPSI-7: The Seventh IPSI Global Conference (29 September–2 October 2018, Kanazawa, Japan)
- CBD COP 14 Side Events “Socio Ecological Production Landscapes and Seascapes for Biodiversity and Livelihood: Roles in Post 2020 Global Biodiversity Framework” and “Consolidation and Replication of Effective Landscape Approaches for Biodiversity Conservation and Human Livelihoods” (17 and 19 December 2018, Sharm El Sheikh, Egypt)
- Regional Consultation Workshop on the Post-2020 Global Biodiversity Framework for Asia and the Pacific Side Event “Multi-stakeholder partnership to enhance landscape and seascape approaches for biodiversity conservation and human livelihood” (29 January 2019, Nagoya, Japan)

## 2019

- High level Political Forum on Sustainable Development 2019 Side Event “Satoyama Initiative – Society in harmony with Nature: An inclusive approach for Communities on Landscapes and Seascapes” (15 July 2019, New York, USA)
- IPSI-8: The Eighth IPSI Global Conference and Expert Thematic Workshop on Landscape Approaches for the Post-2020 Global Biodiversity Framework (2-6 September 2019, Kumamoto, Japan)
- CBD SBSTTA-23 Side Event “Outcomes of the Expert Thematic Workshop on Landscape Approaches for the Post-2020 Global Biodiversity Framework” (27 November 2019, Montreal, Canada)

## 2020

- “Informal meeting on landscape and seascape approaches and their relevance to the post-2020 global biodiversity framework” held on the margin of the CBD Second meeting of the Open-ended Working Group on the Post-2020 Global Biodiversity Framework. (23 February 2020, Rome, Italy)
- Comparative & International Education Society (CIES) Annual Conference Session "Generating transformative change through reframing education within and beyond school settings" (8 April, Online)

- IPSI Steering Committee Meeting (May 2020, email-based)
- IPSI Case Study Workshop 2020 "Transformative change through the multiple benefits of socio-ecological production landscapes and seascapes (SEPLS)" (22-26 June 2020, Online)
- UN High-Level Political Forum on Sustainable Development (HLPF) 2020 Side Event "Satoyama Initiative – Societies in Harmony with Nature: An inclusive approach for communities, landscapes and seascapes" (16 July 2020, Online)
- CBD Thematic Consultation on Sustainable Use of Biological Diversity for the Post-2020 Global Biodiversity Framework (27 July- 8 October, Online)
- Biodiversity Summit (30 September 2020, Online) Video Message by the Director of UNU-IAS
- Global Landscapes Digital Conference Session: "Seizing the landscape opportunity to catalyse transformative biodiversity governance" (29 October 2020, Online)
- International Forum for Sustainable Asia and the Pacific (ISAP) 2020 Thematic Track Session "The Satoyama Initiative, transformative change, and societies in harmony with nature" (12 November 2020, Online)
- IPSI Steering Committee Meeting (December 2020, Online)

## 2021

- CBD Informal Session for the 24th Meeting of the Subsidiary Body on Scientific, Technical and Technological Advice (SBSTTA-24) (17-26 February 2021, Online)
- CBD Informal Session for the 3rd Meeting of the Subsidiary Body on Implementation (SBI-3) (8-14 March 2021, Online)
- IPSI Steering Committee Subsidiary Meeting (March 2021, Online)
- IPSI Case Study Workshop 2021 (28 - 30 June 2021)
- IPSI Steering Committee (July 2021, Email-based)
- UN High-Level Political Forum on Sustainable Development (HLPF) 2021 Side Event "Satoyama Initiative – Healthy Planet, Healthy People: Role of Satoyama Initiative for Green and Blue Recovery" (9 July 2021, Online)
- IPSI Sub-committee First Meeting on Strategy and Plan of Action (24 September 2021)
- IPSI Sub-committee Second Meeting on Strategy and Plan of Action (1 December 2021)
- International Forum for Sustainable Asia and the Pacific (ISAP) 2021 Thematic Track Session "Landscape Approaches for Biodiversity, Climate Change and Sustainable Development Co-benefits" (2 December 2021, Online)
- IPSI Steering Committee Meeting (14 December 2021, Online)

## 2022

- Experts Dialogue "Making OECMs Work: Landscape Approaches for Effective Area-Based Conservation" (25 February, Online)
- 1st Ifugao Rice Terraces Assessment International Summit 2022 (18 - 29 March 2022, Ifugao State University, Philippines and Online)
- CBD WG2020-3 Side Event "Mainstreaming Landscape Perspectives Into the Post-2020 Global Biodiversity Framework" (17 March 2022, Geneva, Switzerland and Online)
- CBD SBI-3 Side Event "Integrating landscape approaches into National Biodiversity Strategy and Action Plans (NBSAPs)" (18 March 2022, Geneva, Switzerland and Online)
- CBD SBSTTA-24 Side Event "Making OECMs Work: Production Landscapes for Effective Area-based Conservation" (24 March 2022, Geneva, Switzerland and Online)





For more information visit the IPSI website  
and the official IPSI social media:

[satoiyama-initiative.org](http://satoiyama-initiative.org)

Or contact the IPSI Secretariat:  
[isi@unu.edu](mailto:isi@unu.edu)

The IPSI Secretariat is hosted by the United Nations University Institute for the Advanced Study of Sustainability (UNU-IAS), and its activities are made possible through the financial contribution of the Ministry of the Environment, Government of Japan.



**SATOYAMA  
INITIATIVE**



**UNITED NATIONS  
UNIVERSITY**

**UNU-IAS**

