

Integrating Sustainable Production and Biodiversity Conservation for Societies in Harmony with Nature in Colombia



SATOYAMA
INITIATIVE



COP16
CALLI - COLOMBIA
Paz con la Naturaleza

Andrés Quintero Angel
CEO CORFOPAL

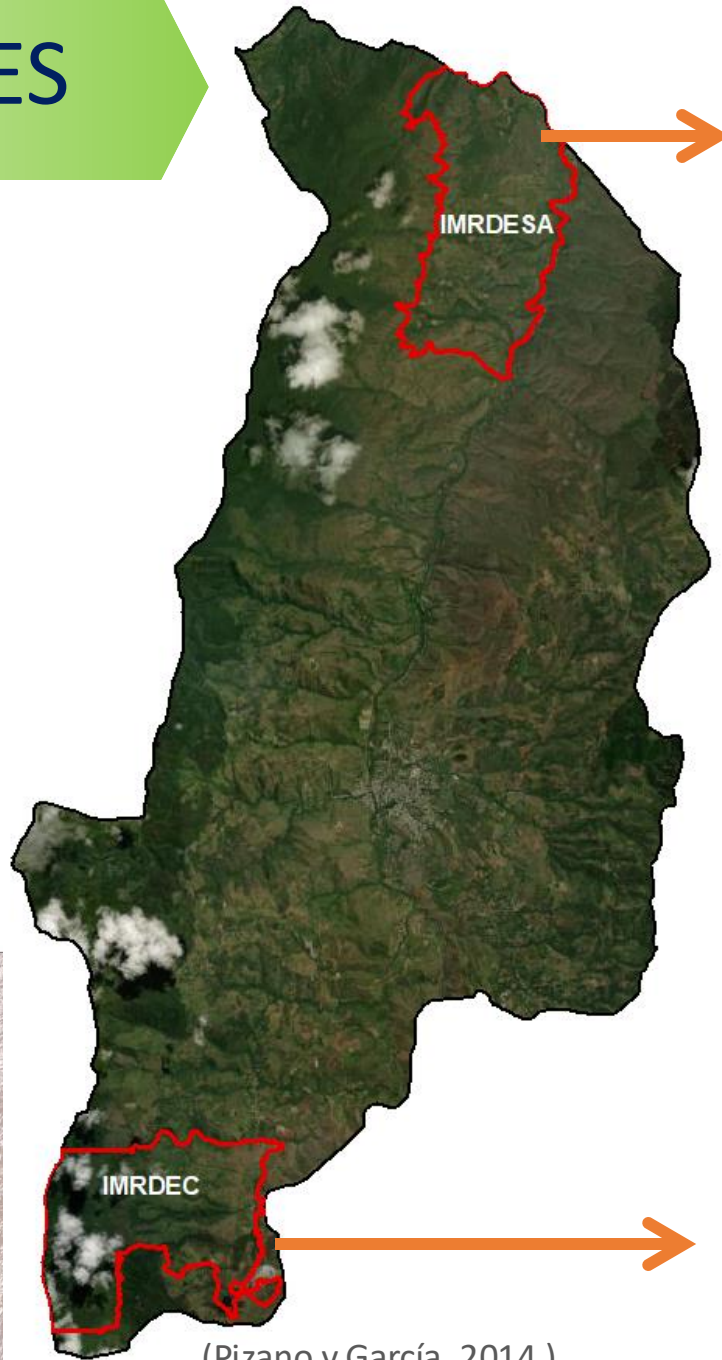
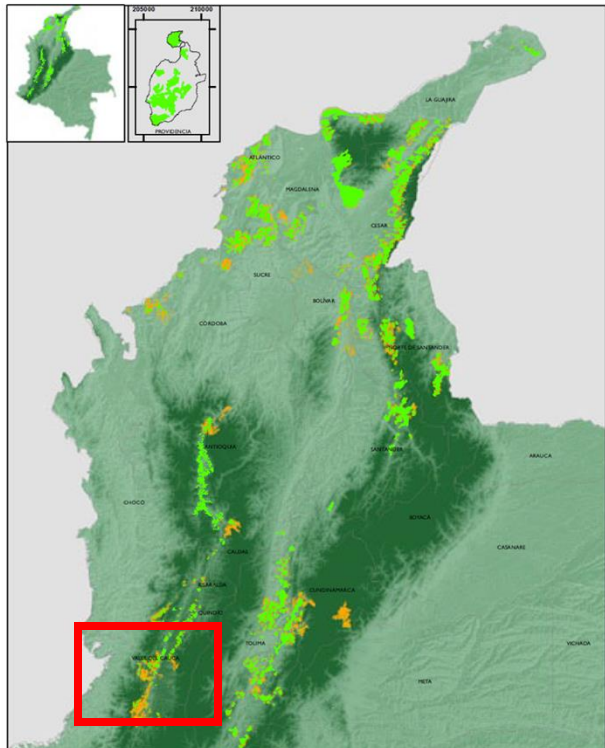
Why Integrate Conservation and Sustainable Production?

- Climate change,
- Biodiversity loss,
- Social challenges impact rural Colombian communities.

A need to balance economic livelihoods with biodiversity conservation



CASE STUDIES



(Pizano y García, 2014.)

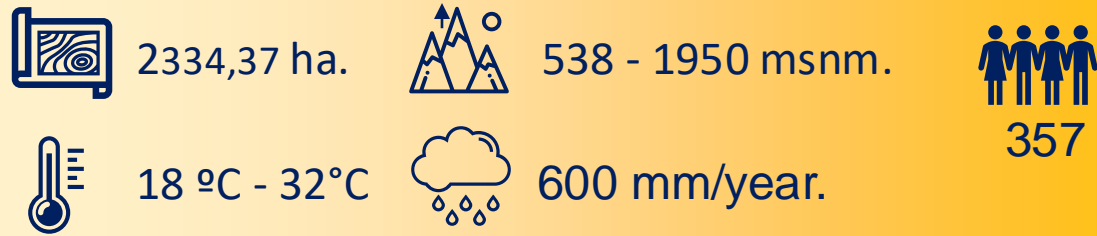
Integrated Management Regional District
Subxerophytic Enclave of Atuncela (IMRDESA)



Integrated Management Regional District El
Chilcal (IMRDEC)



IMRDSEA

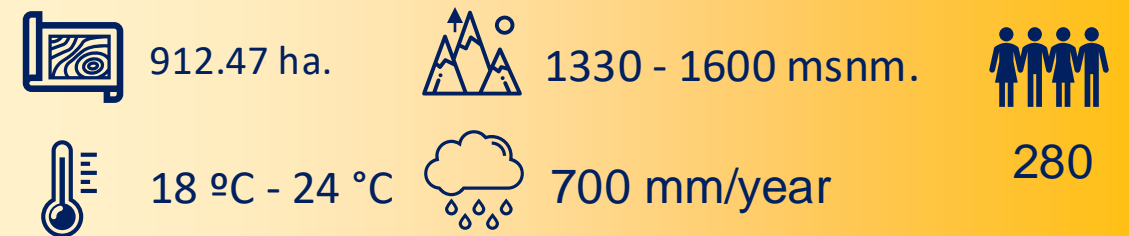


 Declared as a protected area on 13 Dic , 2007.

 Dry and very dry forest (subxerophytic)


 Agriculture, livestock, poultry, fish farming, mining and tourism.

IMRDEC



 Declared as a protected area on 15 Sep. 2015.

 Dry forest and rainforest

 Agriculture, livestock, poultry, and fish farming.

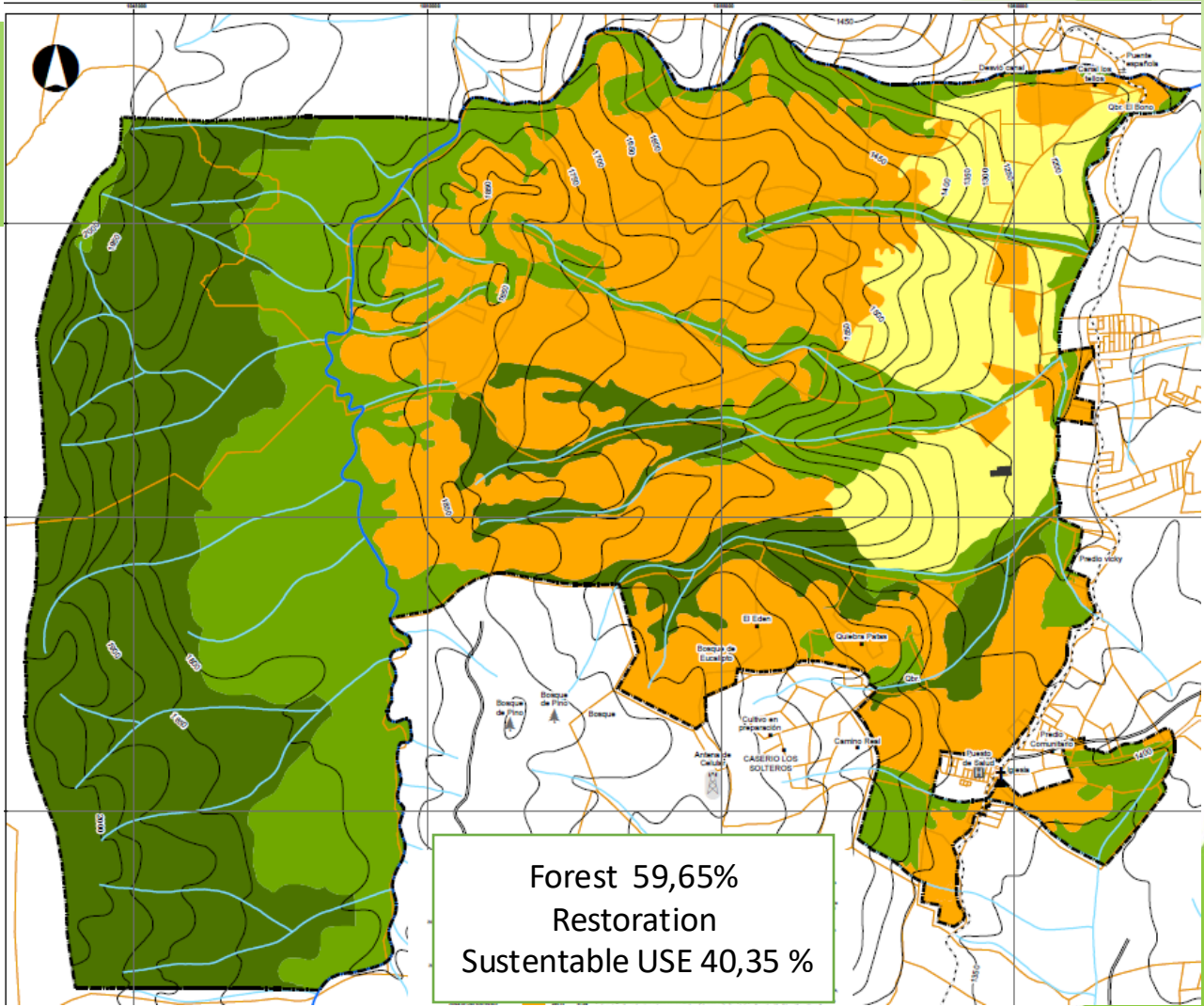
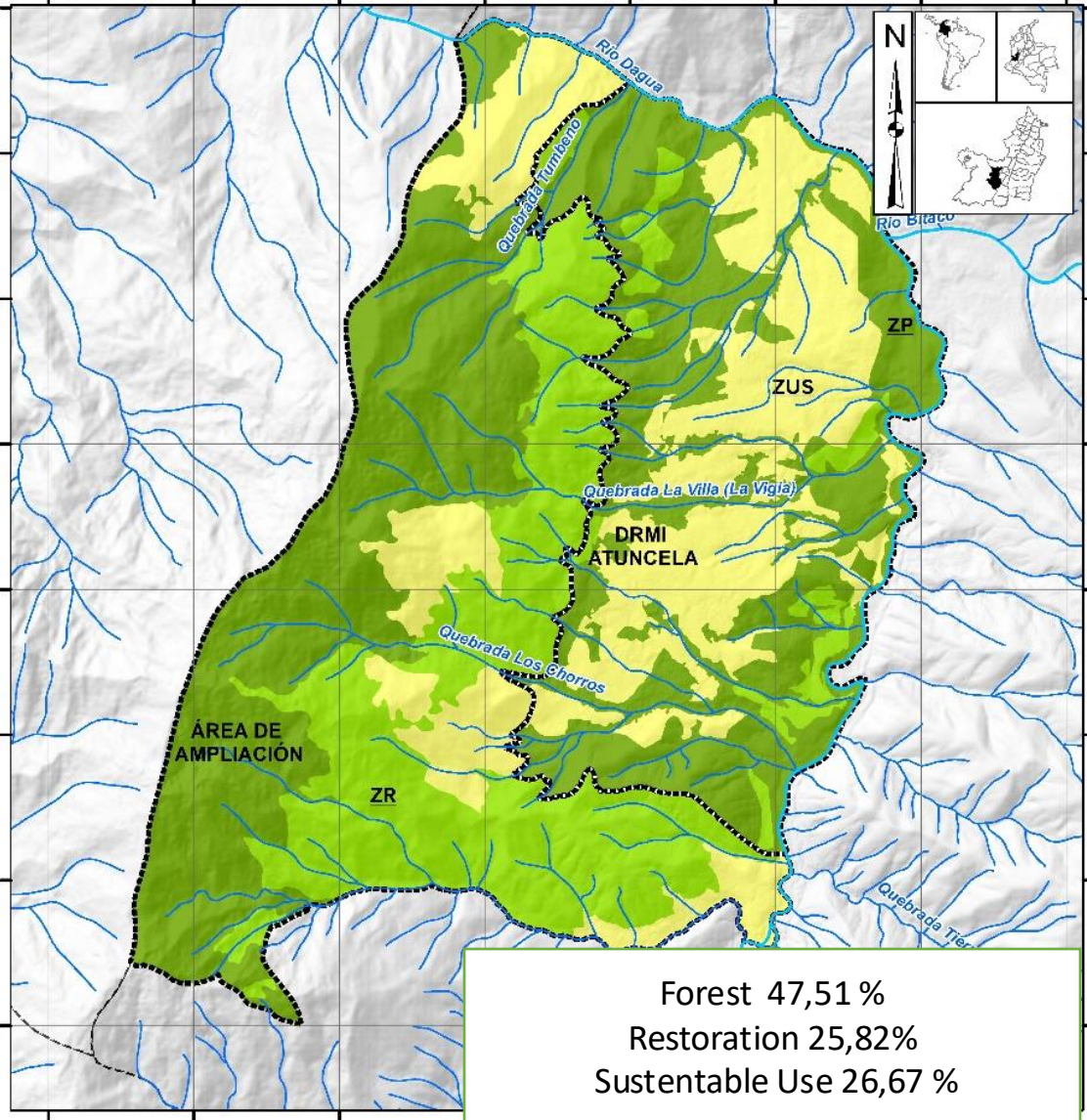
Sustainable Production

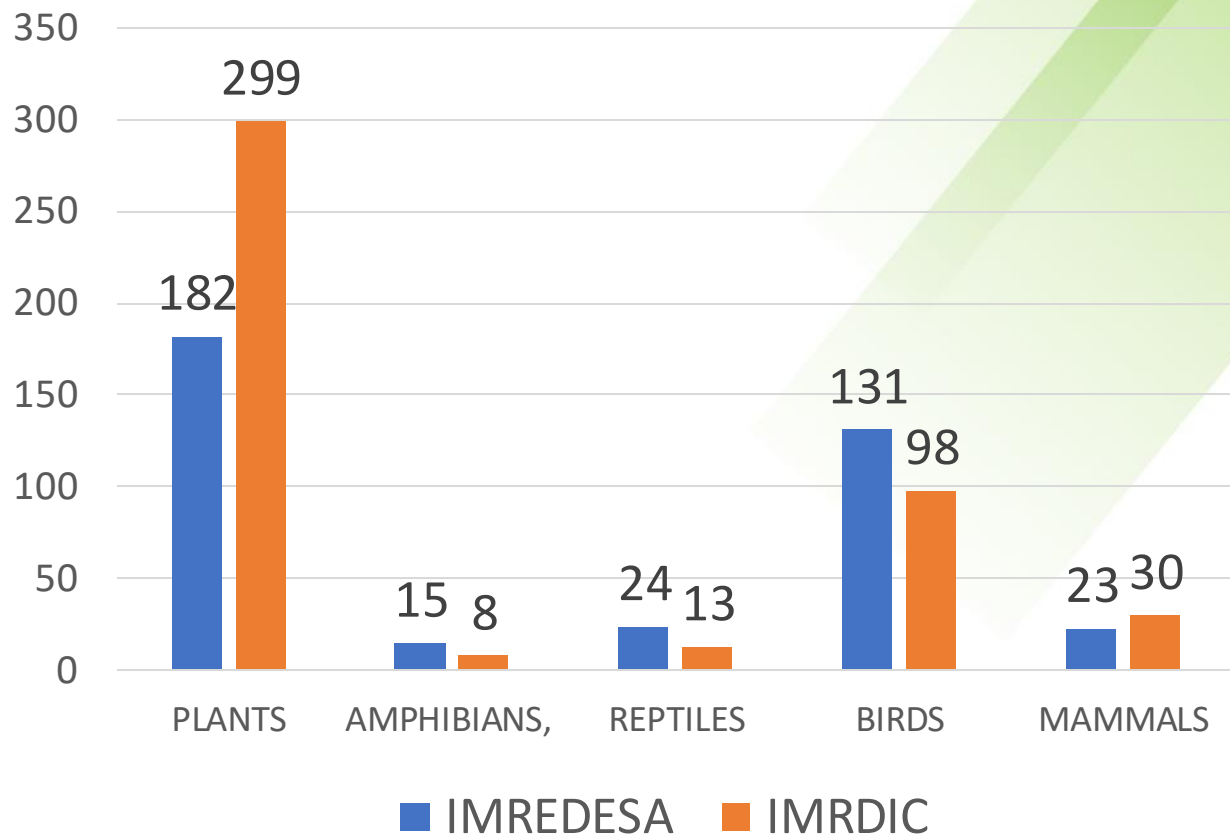
78.2% of the properties in both SEPLs have **polycultures**, among which **sugarcane predominates in IMRDSEA** and **coffee in agroforestry systems in IMRDEC**



The **Atuncela's community sugar mill** produces **25 tons** of organic panela monthly and **280 tons per year**, which represents approximately **\$770 million pesos** (175650.40 USD)

Biodiversity Conservation





Conclusions

The **management** of SEPLs has led to a reduction in the loss of coverage and an increase in connectivity between SEPLs.

Governance in SEPLs, is critical to achieving conservation and sustainability goals

Achieving a balance between human and environmental needs, integral to fostering societies in harmony with nature



GRACIAS THANK YOU



Contáctanos:

Correo - info@corfopal.org

Celular – 3166953282

LIDERADO POR



SOCIOS NACIONALES

CON EL APOYO DE

**CRITICAL ECOSYSTEM
PARTNERSHIP FUND**



**RAINFOREST
TRUST**

