

Satoyama Development Mechanism (SDM)

- Supporting on-the-ground initiatives

31 October 2024

At

COP16 Side Event

“Working together to realize societies in harmony with nature: Mechanisms and tools to support on-the-ground initiatives”

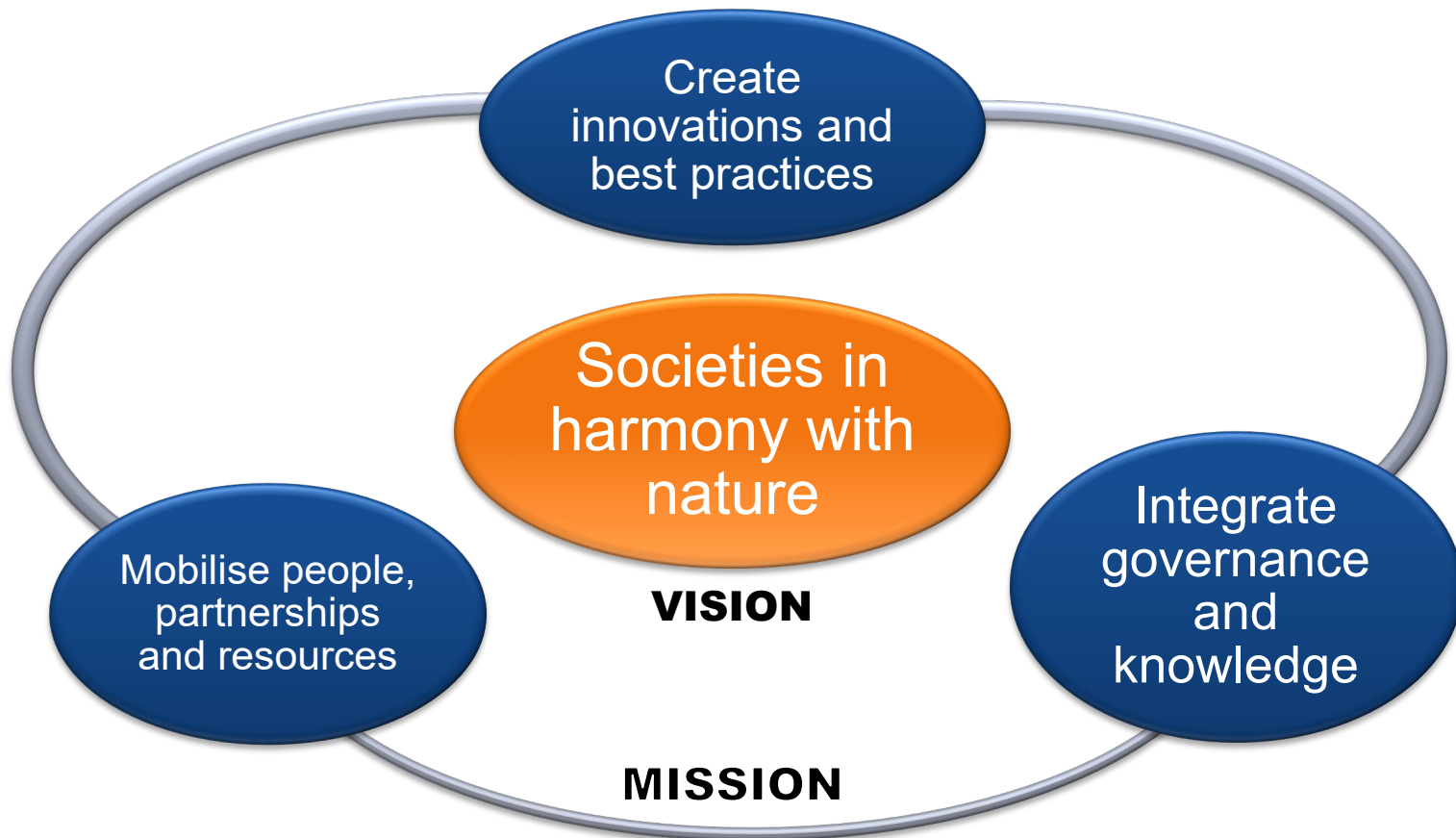
Koji Miwa

Policy Researcher, Biodiversity and Forests Area



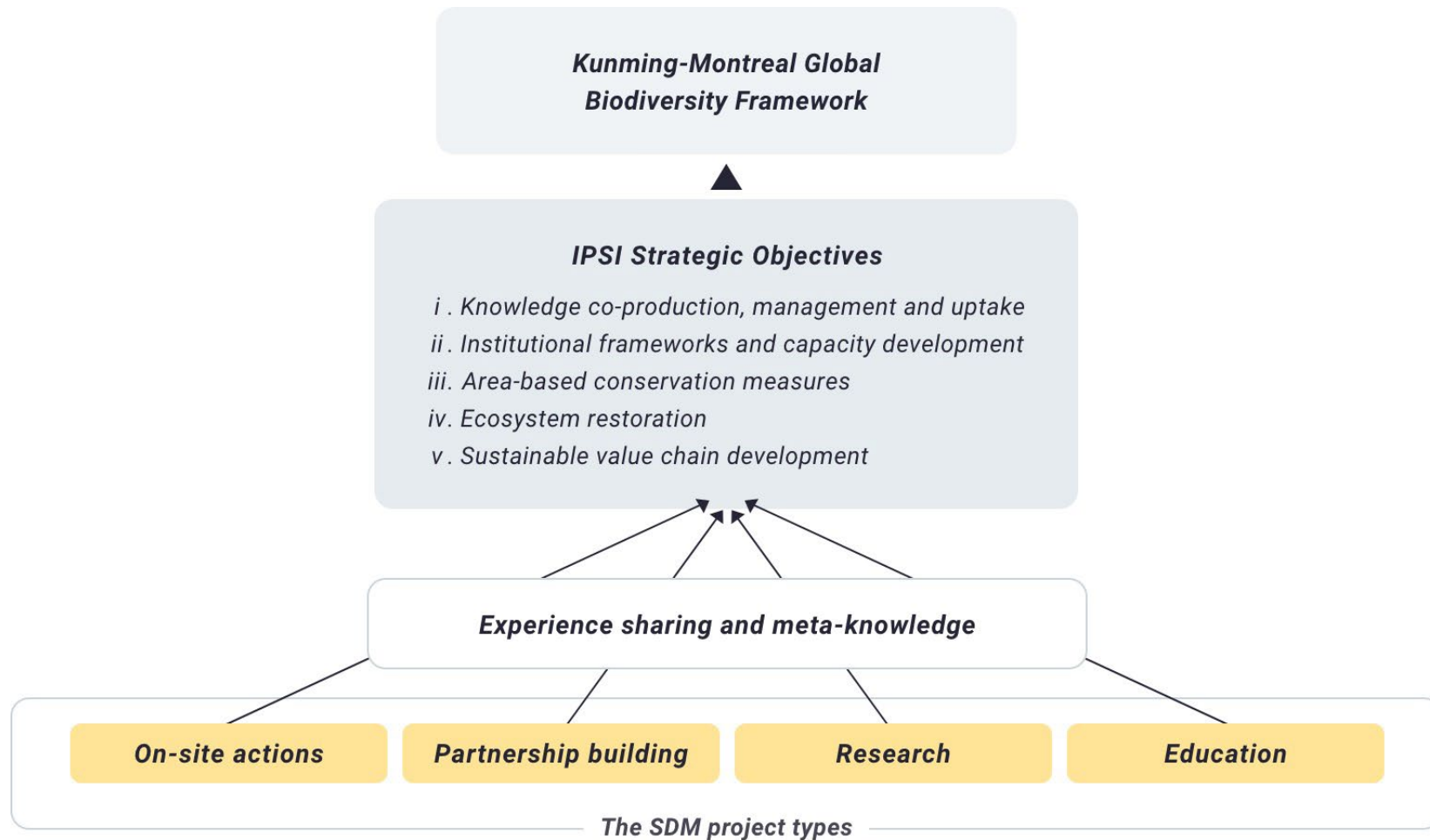
What is SDM?

- **A financing mechanism to facilitate the implementation of activities by IPSI members.**
- **Established jointly by IGES, UNU-IAS and Ministry of Environment of Japan, and launched in 2013.**
- **Fund: up to US\$ 20,000 per project (Increased from \$10,000 in 2022)**
- **Select 5 projects per year**



What we do

- **Support projects that enhance actions towards the IPSI Strategic Objectives, and thereby the KMGBF, especially through:**
 - **Development of other effective area-based conservation measures (OECMs);**
 - **Landscape or seascape restoration;**
 - **Conservation and collaboration with indigenous peoples and local communities;**
 - **Resilience enhancement; and**
 - **Sustainable food or material production.**
- **Outreach activities**



SDM projects

Achievements of SDM

- Supported 68 project 26 countries and two regions
 - Africa: 19
 - Asia: 34
 - Europe: 4
 - North America: 2
 - South America: 8
 - Pacific: 1













Outreach

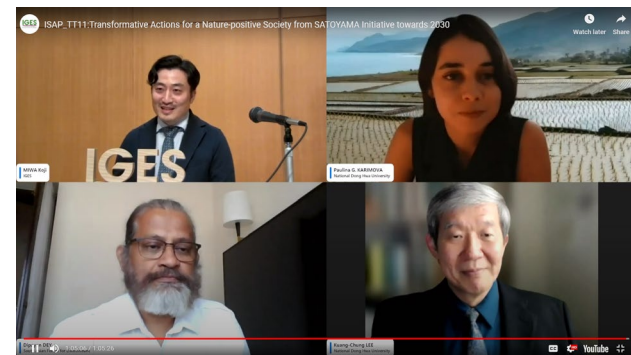
[Home](#)[About the SDM](#)[Call for Proposals](#)[Projects](#)[Resources](#)[Search Project & Resource](#)

The Satoyama Development Mechanism (SDM)

The Satoyama Development Mechanism (SDM) is one of the collaborative activities of the International Partnership for the Satoyama Initiative (IPSI). It serves as a financing mechanism to facilitate the implementation of activities under IPSI. The SDM was established jointly by the Institute for Global Environmental Strategies (IGES), the United Nations University Institute for the Advanced Study of Sustainability (UNU-IAS) and the Ministry of the Environment of Japan (MOEJ).

[About the SDM](#)

News



Need for a sustainable food system

- Food systems refers to the processes that include production, processing, distribution (transport), consumption and disposal.
- Growing world population, rural poverty, high carbon footprint of food, deforestation for agricultural land expansion, pollution, etc. ... food systems need to be sustainable.

ISAP2024



Thank you for your attention!