

# CBD COP16 Side Event

Working together to realize societies in harmony with nature: Mechanisms and tools to support on-the-ground initiatives

## The Satoyama Initiative and peer learning on landscape approaches

31 October 2024

Maiko Nishi, Research Fellow

Secretariat for the International Partnership for the Satoyama Initiative (IPSI)

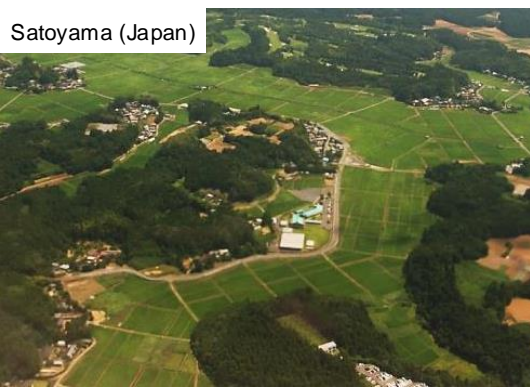
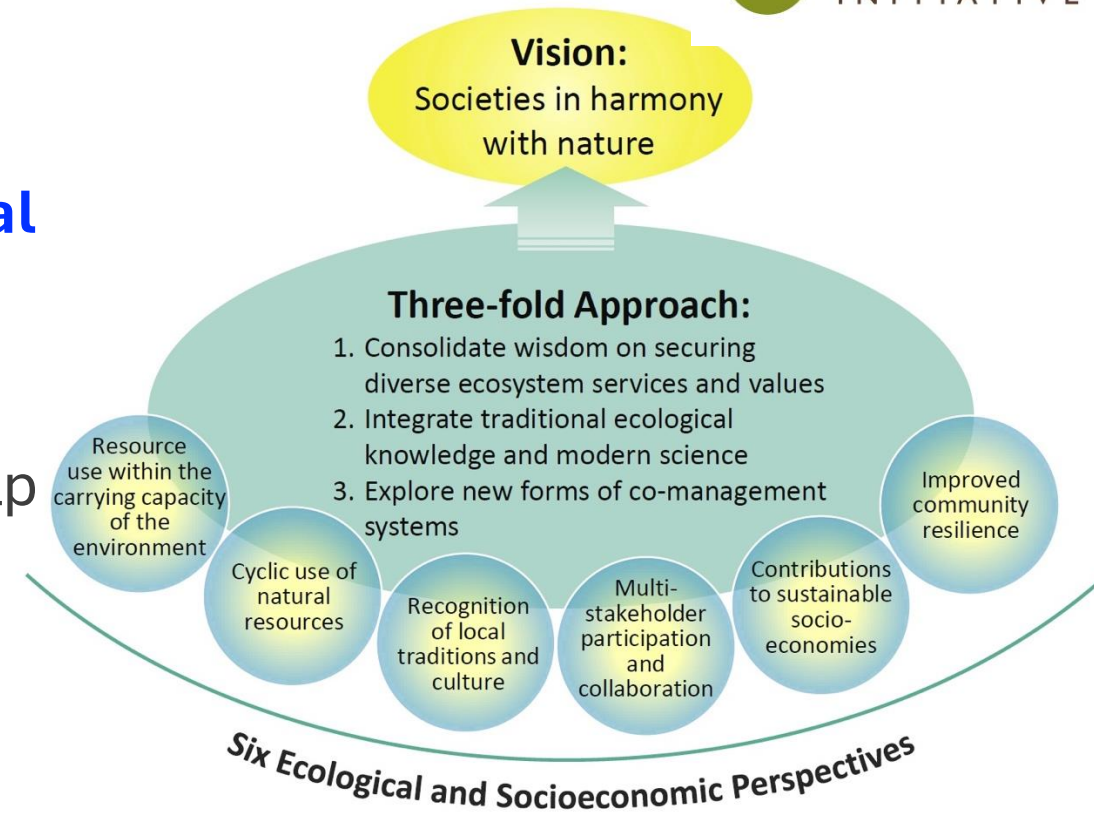
Biodiversity & Society, United Nations University Institute for the Advanced Study of Sustainability (UNU-IAS)



Landscape in Nanao City, August 2018  
Photo: Maiko Nishi

# The Satoyama Initiative

- Jointly initiated by UNU and MoEJ as a global effort to realize “**societies in harmony with nature**”
- Aim to conserve and restore **socio-ecological production landscapes and seascapes (SEPLS)** - The concept originates from the discussions in JSSA
- SEPLS**: Areas where **production activities** help to maintain **biodiversity** and **ecosystem services** in various forms while sustainably supporting the **livelihoods** and **well-being** of local communities (UNU-IAS and IGES eds. 2015)



# International Partnership for the Satoyama Initiative (IPSI)

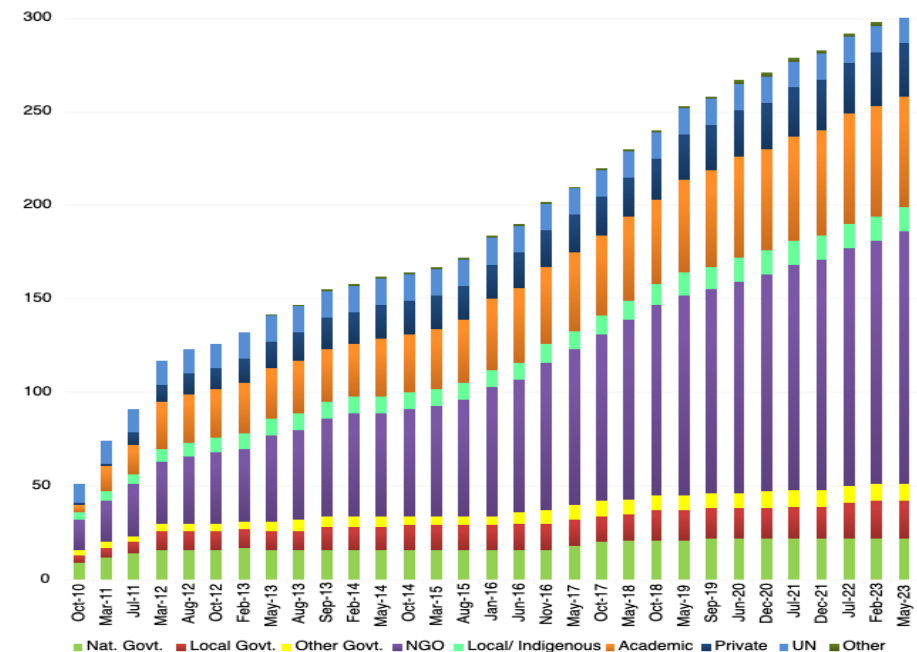
- Launched at CBD COP 10 in 2010 as **a global platform** to promote networking and collaboration on **socio-ecological production landscape and seascapes (SEPLS)**
- Contribute to CBD's second objective: **“Sustainable use of biodiversity”** both in developing and developed countries
- A partnership made up of **328 member organizations** as of May 2024 (e.g., government, NGOs, private sector, academia, IPLCs) dedicated to working together - fostering **synergies in the implementation**
- IPSI Secretariat at UNU-IAS



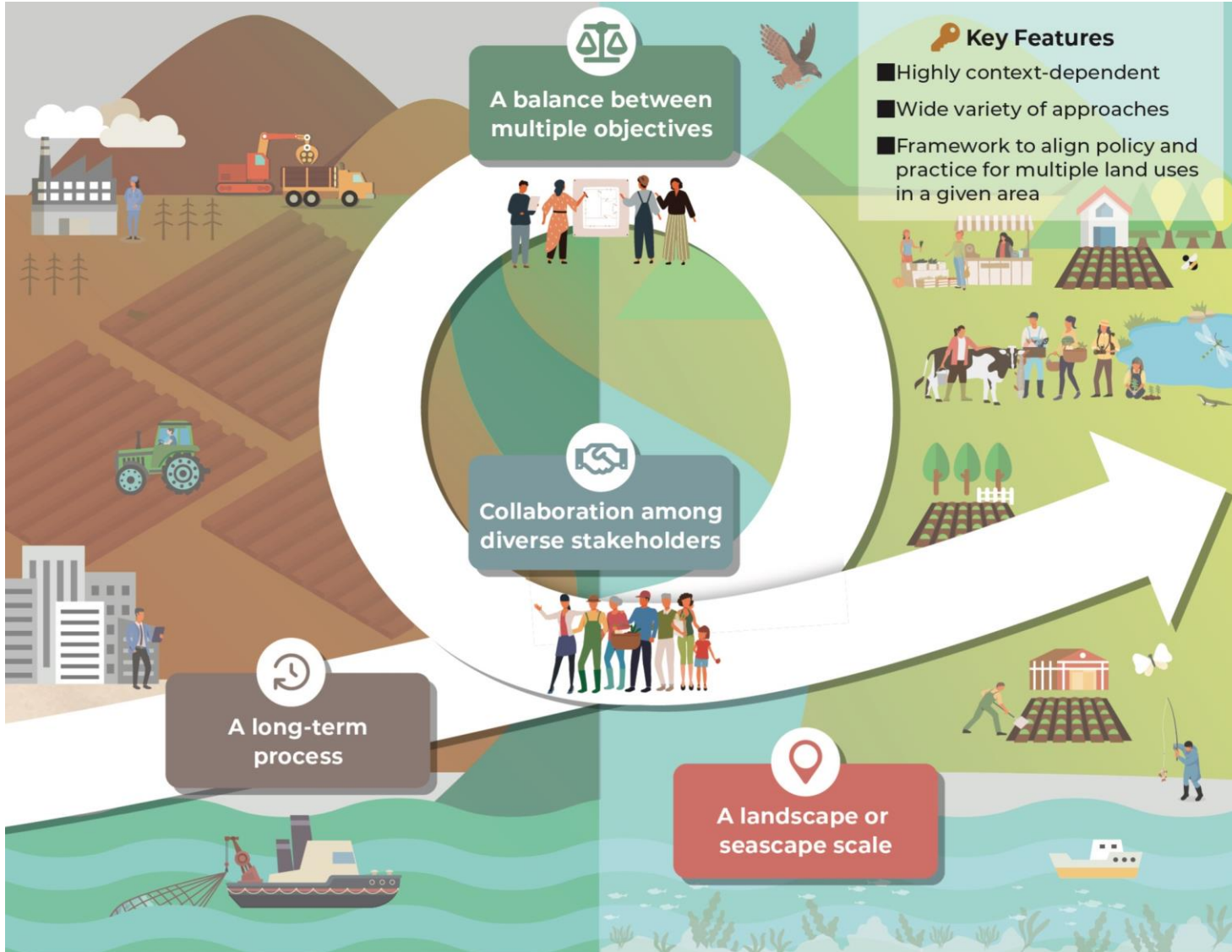
Photo: UNU-IAS 2010

## CBD COP10 Decision X/32:

The Conference of the Parties [...] recognizes **the Satoyama Initiative** as **a potentially useful tool to better understand and support human-influenced natural environments** for the benefit of biodiversity and human well-being [...] and invites Parties, other Governments and relevant organizations to participate in the partnership to further advance **the Initiative**



# Landscape Approaches



## Key features



Space-based strategies



Reconciling competing demands



Iterative learning processes

## Application to Policy Processes



[https://satoyama-initiative.org/wp-content/uploads/2019/06/Landscape-Approaches-Manual\\_20240118.pdf](https://satoyama-initiative.org/wp-content/uploads/2019/06/Landscape-Approaches-Manual_20240118.pdf)



<https://ias.unu.edu/en/publications/unu-ias-policy-brief-series>

# IPSI Activities

## Organizing Events



Global Conferences



Regional Workshops



Side-events at related conferences



Many others

## Information Platform

Case Studies

Website

Newsletter

Publications

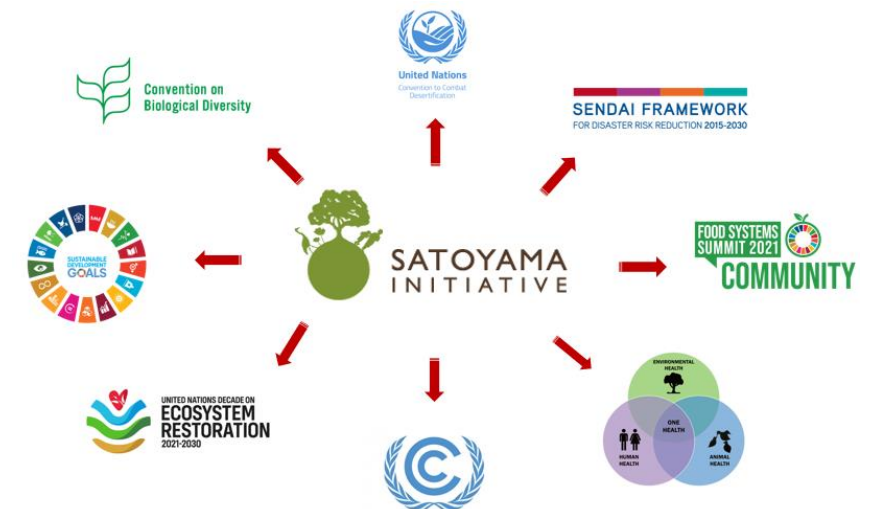
## Collaborative Activities



- To strength collaboration and synergy among IPSI member organizations

## IPSI's primary functions

-  Knowledge sharing & Network building
-  Information platform
-  On-the-ground activities & Capacity development
-  Research & Policy contributions



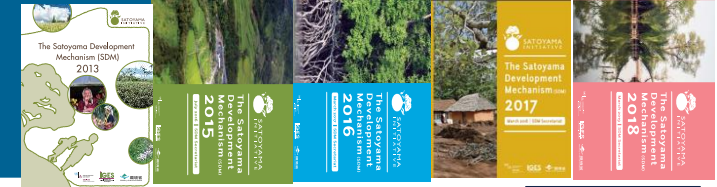
IPSI also fosters synergies among diverse members and with other organisations and networks.

# Flagship IPSI Collaborative Activities

1

## Satoyama Development Mechanism (SDM)

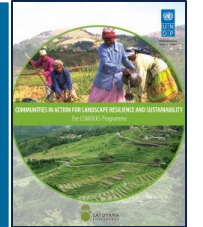
68 seed funding projects since 2013  
- with MOEJ & IGES



2

## Community Development and Knowledge Management for the Satoyama Initiative (COMDEKS)

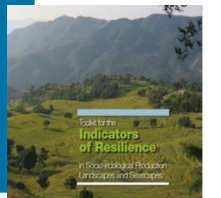
More than 200 small-grant projects (completed or nearing completion)  
- with UNDP, MOEJ, SCBD



3

## SEPLS Resilience Indicators Toolkit

Used in about 40 countries  
- with UNDP, IGES, Biodiversity International



4

## Satoyama Initiative Thematic Review (SITR)

83 Case studies, 8 Volumes since 2015  
- With IPSI members (authors, reviewers)



5

## NBSAP Research Project

*A technical manual on how to apply landscape approaches*  
- with IGES, SCBD, MOEJ



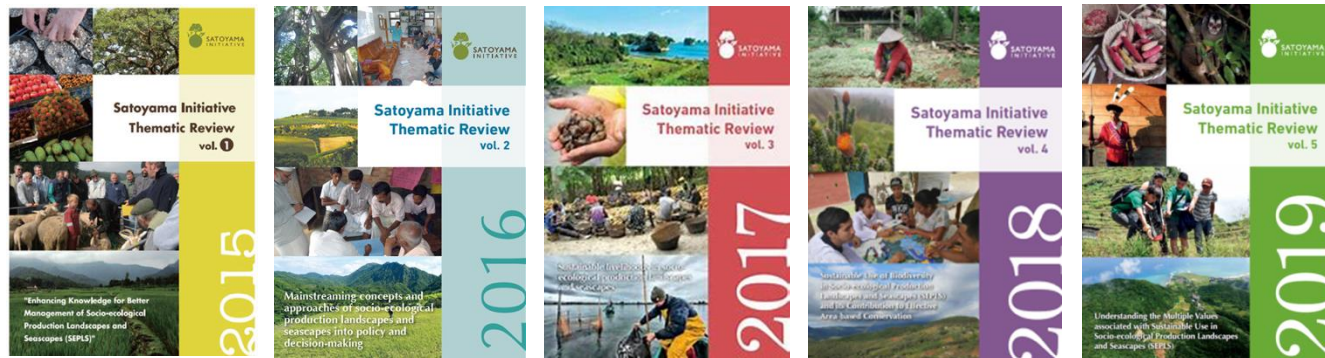
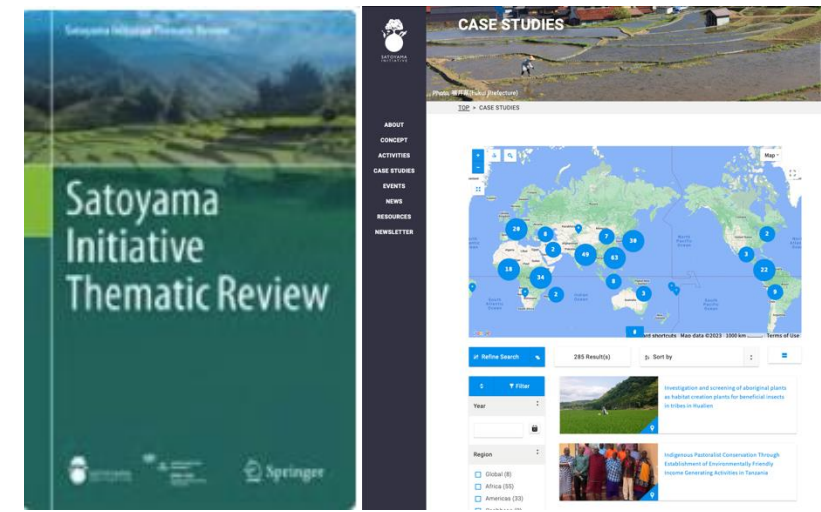
IPSI



Working in partnerships to find **local solutions for global challenges**

# IPSI Case Studies

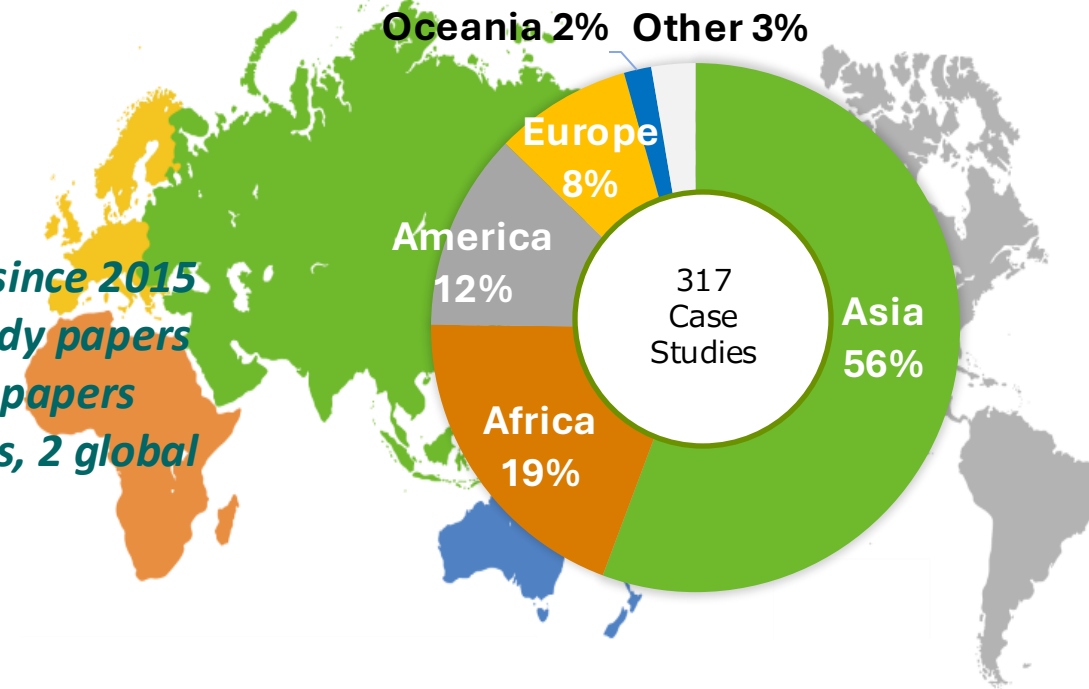
**Satoyama Initiative Thematic Review (SITR):** An annual series of **IPSI case studies**, published since 2015 to collect and disseminate **knowledge and lessons related to SEPLS** (especially based on **activities on-the-ground**) and provide **policy recommendations**



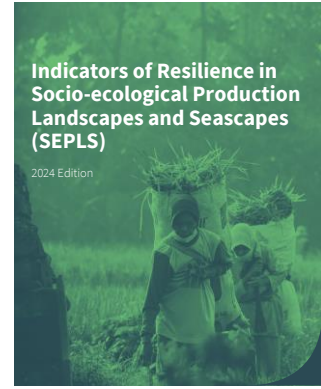
[https://satoyama-initiative.org/case\\_study/](https://satoyama-initiative.org/case_study/)



- **9 Volumes since 2015**
- **95 Case study papers**
- **9 synthesis papers**
- **31 countries, 2 global reviews**



# Indicators of Resilience in Socio-Ecological Production Landscapes and Seascapes (SEPLS)



Indicators of Resilience in Socio-ecological Production Landscapes and Seascapes (SEPLS)  
2024 Edition

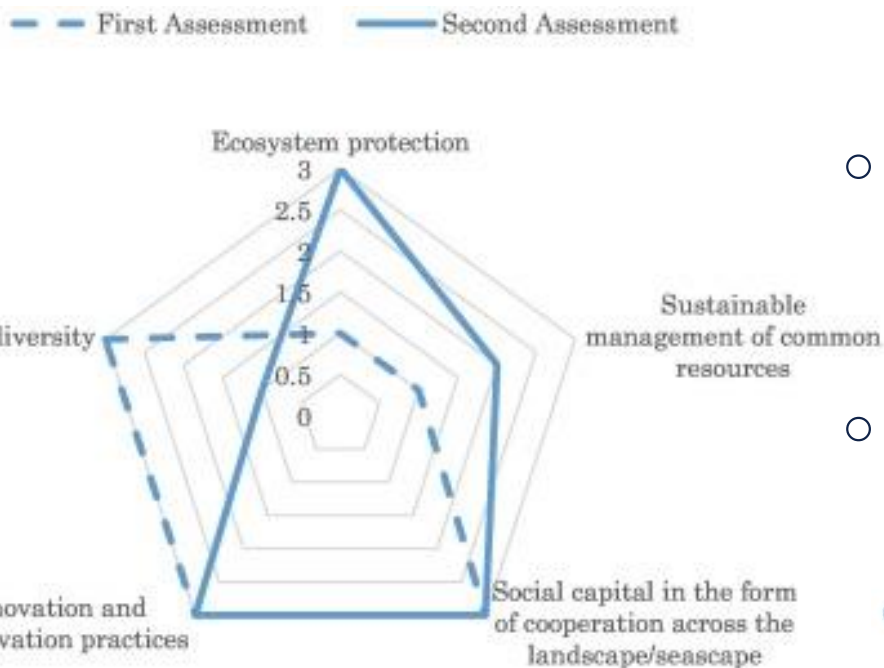
2024 Edition



□ A set of 20 indicators for communities to assess the **social-ecological resilience** in production landscapes and seascapes

- Include **qualitative** and **quantifiable** indicators -- based on **observations, perceptions and experiences of local communities**
- Define **spatial scale** depending on **how local community members identify the area** (e.g., administrative, geographic boundaries).

- Capture **different aspects of key systems** (i.e., ecological, agricultural, cultural, social, economic)
- **Periodic use** enables **monitoring and evaluation** and identification of **priority actions** for adaptive management.
- **A tool for engaging local communities in adaptive management** of land/seascapes



(Dublin and Natori 2020)



Participants score their landscape using indicators for resilience during a workshop, Bhutan

	Domnic	Mona	Mega	Julia	Bella	Diana	Idu	Overall
1	4	4	3	5	3	5	3	4
2	3	3	2	3	2	4	2	3
3	3	3	4	4	2	3	3	3
4	3	3	3	3	3	3	3	3
5	3	3	3	4	3	3	4	3
6	2	3	2	2	2	2	3	2
7	2	2	2	2	2	2	3	2
8	2	2	2	2	2	2	2	2
9	1	2	3	2	2	2	1	2

Scoring data collected at a workshop in Kenya



© COMDEKS Bhutan/Dorji Singrey

© Bioversity International/Yasuki Morimoto



# IPSI Strategy and Plan of Action 2023-2030

## Strategy

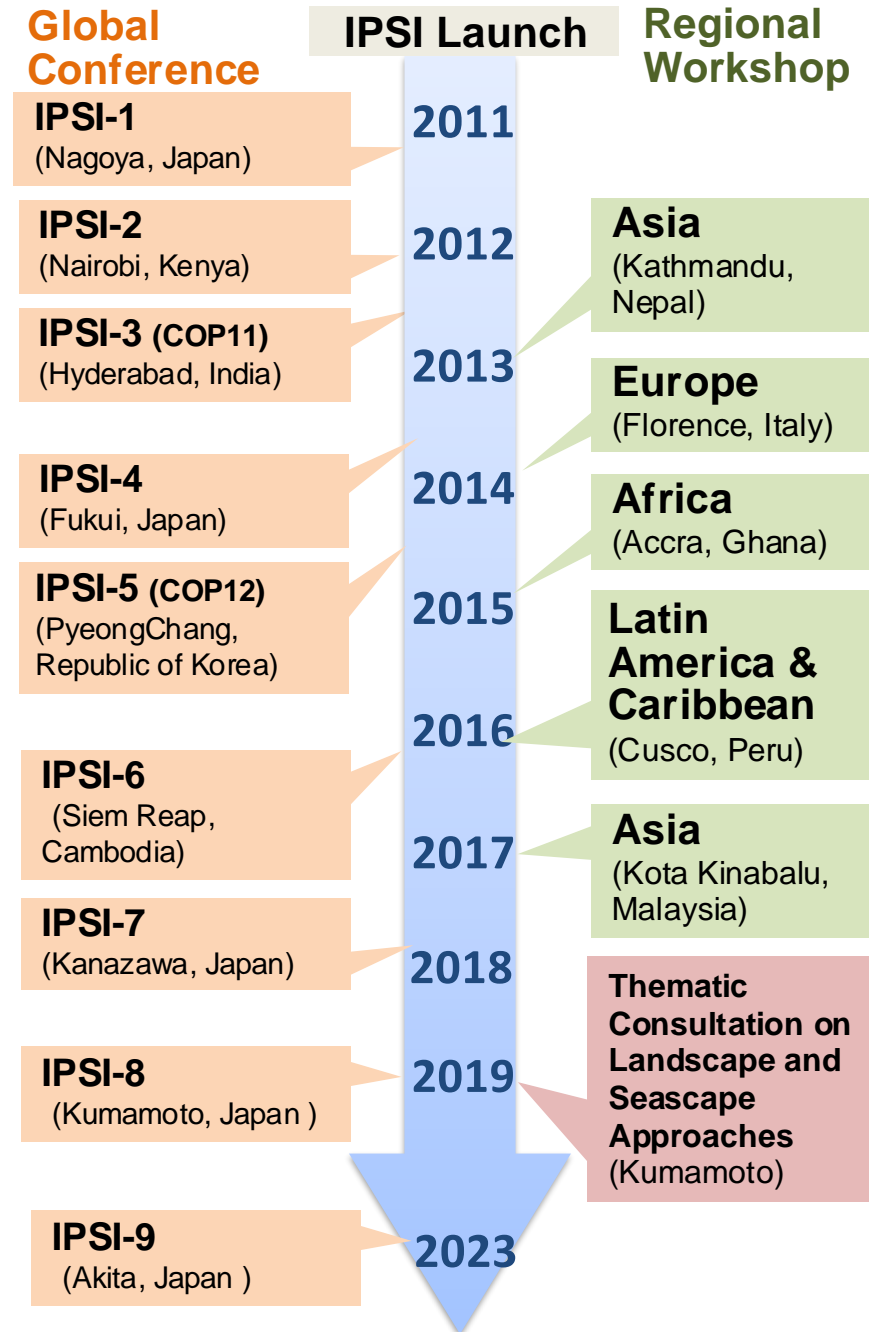
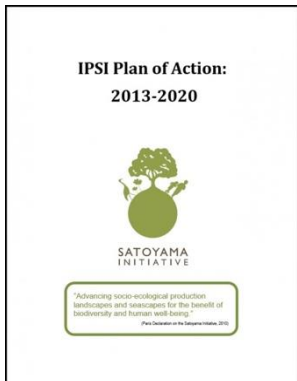
- Vision
- Mission
- Strategic Objectives
- Monitoring and Reporting

## Plan of Action 2013-2020

- Priority Actions (PAs)
- Mechanism to implement PAs
- Monitoring, Reporting and Evaluation

## IPSI Strategy and Plan of Action 2023-2030

- Vision
- Mission
- Strategic Objectives
  - Outcomes
  - Priority Actions
- Monitoring, Reporting and Evaluations
- Indicators



# IPSI Strategy & Plan of Action (PoA) 2023-2030

**Vision: Realize “societies in harmony with nature”**

## Mission:

- a) Promote and support the **concept of SEPLS** and **actions towards their revitalization and sustainable management** building on the **knowledge and culture of IPLCs...**
- b) Enhance the **contribution of SEPLS** to achieve the objectives of the **Rio Conventions** and the implementation of other **relevant international agreements...**
- c) Promote the **concrete benefits of SEPLS** to the **environment and society...**

## Strategic Objectives



**Knowledge Co-Production, Management, and Uptake**



**Institutional Frameworks and Capacity Development**



**Area-Based Conservation Measures**



**Ecosystem Restoration**



**Sustainable Value Chain Development**



Photo: UNU-IAS 2023

