

Mobilizing supporters and building partnership with the private sector: Case study of Hayama, Japan



Masanori Kobayashi, Associate Professor
 Graduate School of Environment and Information Sciences
 Yokohama National University, Japan

Background: Hayama, 60 km away from Tokyo is a custodian town of the rare *Satoyama* or rural ecological production landscape. It is located in Kamiyamaguchi and was awarded “Satoyama 100” in 2009 out of 4474 applications in Japan. It is one of the few that still exist in the Tokyo Metropolitan area, but it faces various challenges and its future depends on the people’s actions.

Activities: As a part of the Programme on Environmental Leadership Development for Sustainable Living with Environmental Risks carried out by the Yokohama National University Graduate School of Environment and Information Sciences, a group of faculty members and graduate school students have analyzed the driving forces of ecosystem natural resource depletion, inherent ecosystem services and possible intervention options.

Drivers for nature depletion

- Housing and building complex development
- Golf course operations
- Abandoned farmland



Conservation and sustainable use

- Indigenous biodiversity
- Biological and agricultural production
- Water harvesting

Options for conservation and sustainable use of natural resources in Satoyama in Hayama



Removing bamboo shoots in the abandoned forms



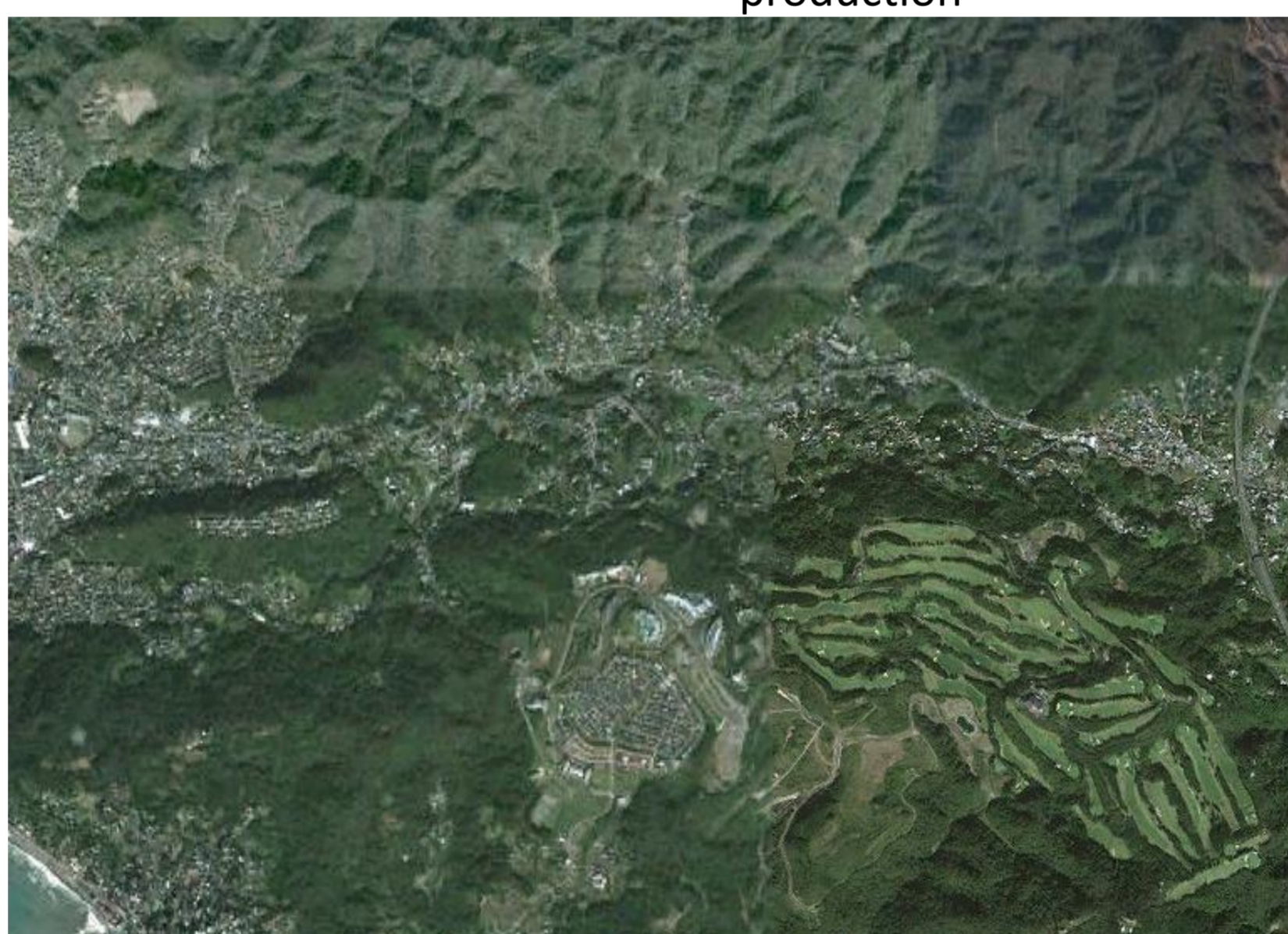
Citrus natsudaidai production



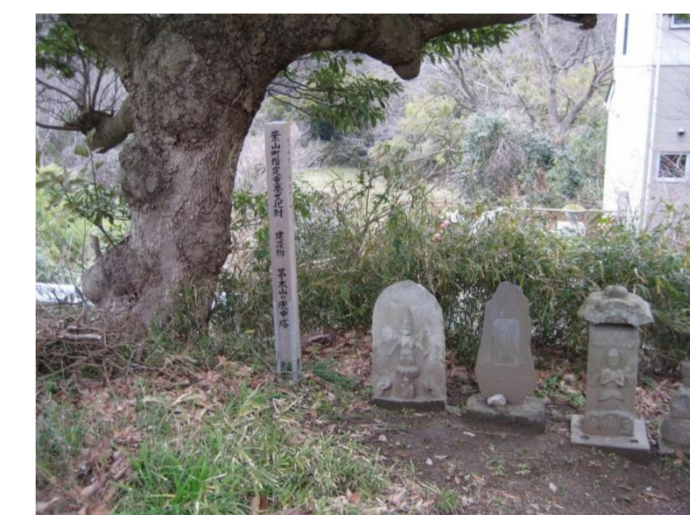
Citrus wine production



Apiculture



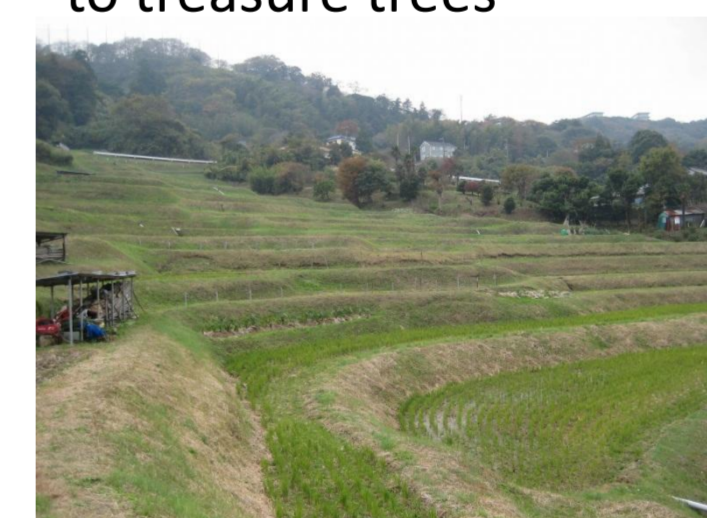
Hayama and its peripherals f(Google Earth)



Attaching religious value to treasure trees



Sustainable water use



Conserving rice terrace as aesthetic landscape



Sustainable charcoal making for sustainable forest management and land slide prevention



Reforestation in former gravel extraction sites



Cattle breeding with feed of fermented rice husk



Using pheromone trap as substitution for pesticides

Instrumental movement

- Organizing farm supporters – groups of volunteers support farmers for in-kind remuneration of agricultural produce
- Forest management consignment – Private company owning large forest areas allows local NPOs to manage forests and lands



Research questions/future challenges

- Assessing the value of ecosystem services and biodiversity in the areas
- Measuring the impacts of intervening actions
- Creating incentives and enhancing additional values of produce from the areas
- Expanding partnership and networks