



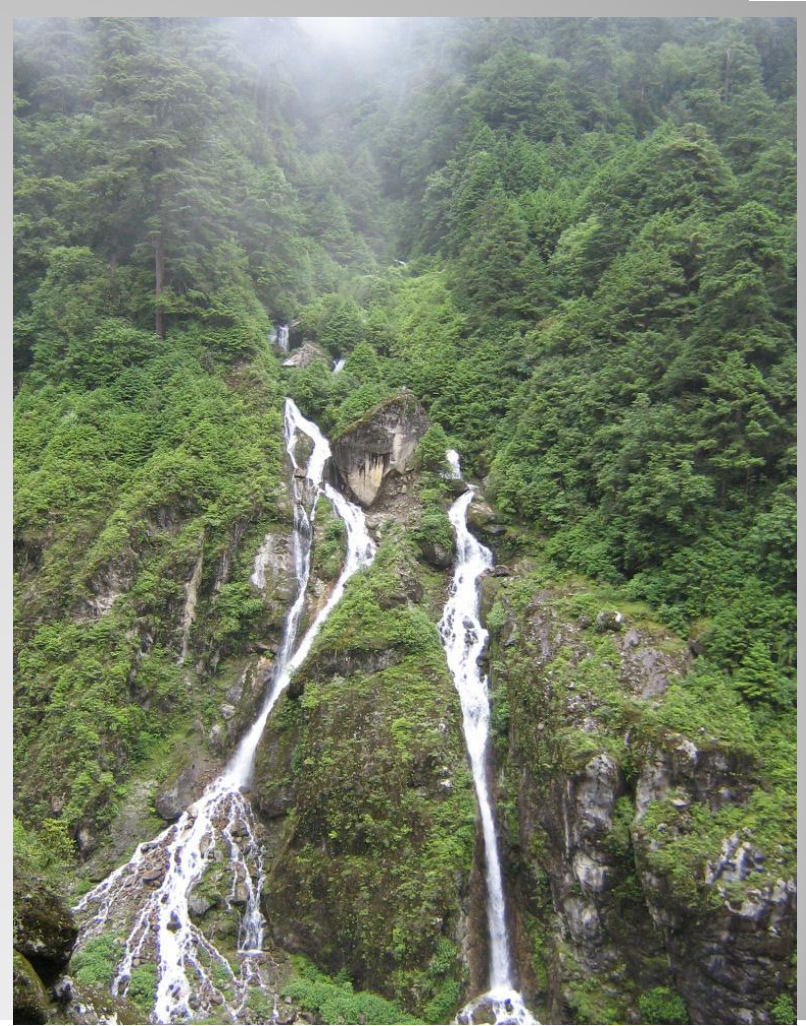
Kanchenjunga Conservation Area (KCA): the region's first community managed conservation area

Mangal Man Shakya
Chairman
Wildlife Watch Group (WWG)
Nepal

- The government of Nepal declared 2035 sq.km. area of Taplejung district as Kanchenjunga Conservation Area (KCA) in 1997 to protect and manage the biological and cultural resources of the region.
- It covers 4 vdc's with 968 households. The total population in this area is 5254. There are 81 user groups and 7 user committees.



- It is being managed based on approved KCA management plan (2063/64-2067/68), KCA Management Regulation 2064 and Sacred Himalayan Landscape (SHL) strategies.



- Government of Nepal (GoN) decided in 2006 to hand over the management of entire protected area to the local people.

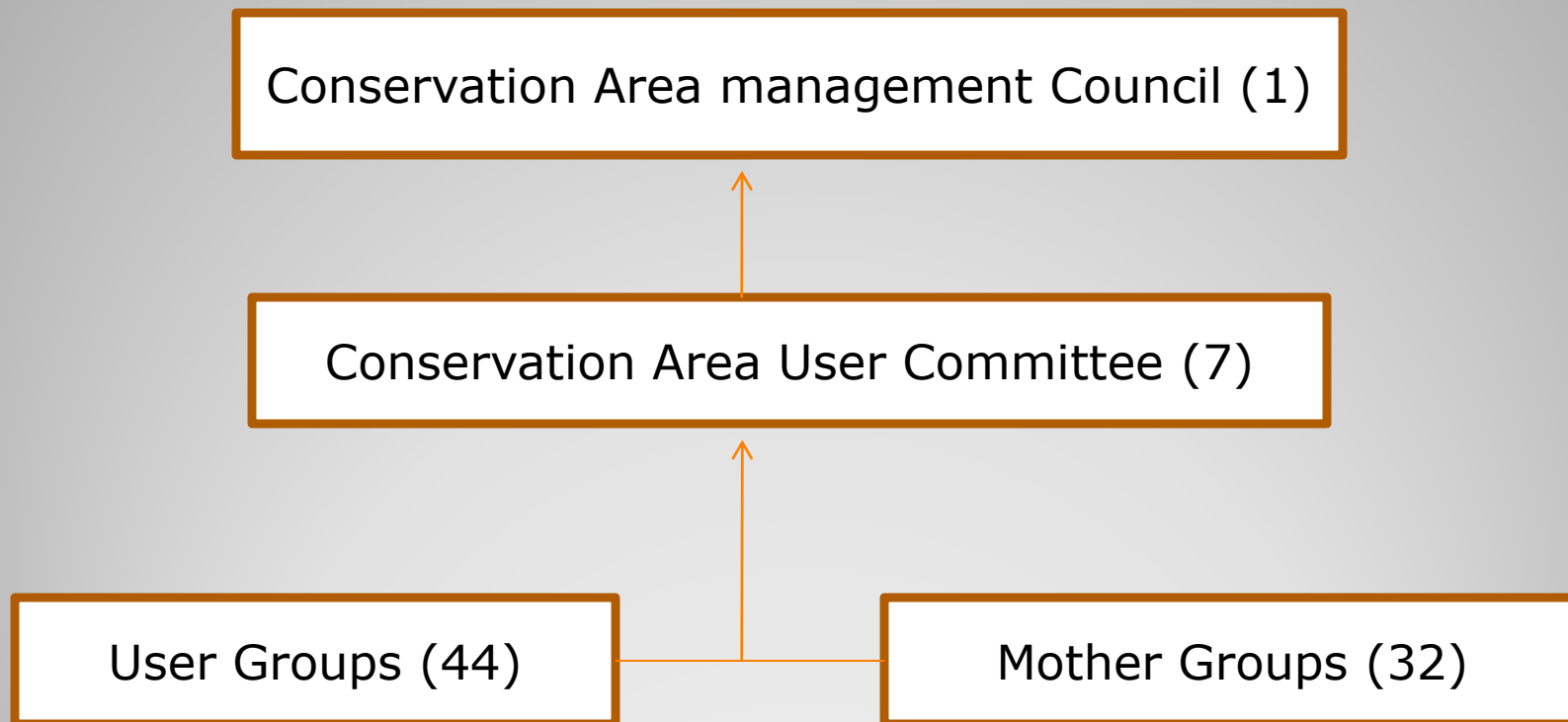


- Witnessing the functioning of KCA since last five years, GoN recently declared similar conservation areas in the West

- With population of more than 5,000 only over 200 youths are literate. We should focus to implement programs to empower these youths for planning and management
- Engaging them full time in conservation activity based on their traditional knowledge and intervening with necessary modern conservation tools



Management Structure



- The annual inflow of tourists is less than 500
- KCA as SEPL



- IPSI-WWG programs
 1. Quality tourism programs
 2. Community Development Programmes
 3. Conservation Support Programmes
 4. Supporting Activities



THANK YOU

