

IPSI-2 Public Forum

13&14, March 2012

World Agroforestry Centre

Nairobi, KENYA



N. Anil Kumar
Director, Biodiversity
Programme, MSSRF

XIth Conference of Parties
CONVENTION ON BIOLOGICAL DIVERSITY
HYDERABAD INDIA 2012



RIO+20
United Nations
Conference on
Sustainable
Development



United Nations Decade on Biodiversity

M S SWAMINATHAN RESEARCH FOUNDATION

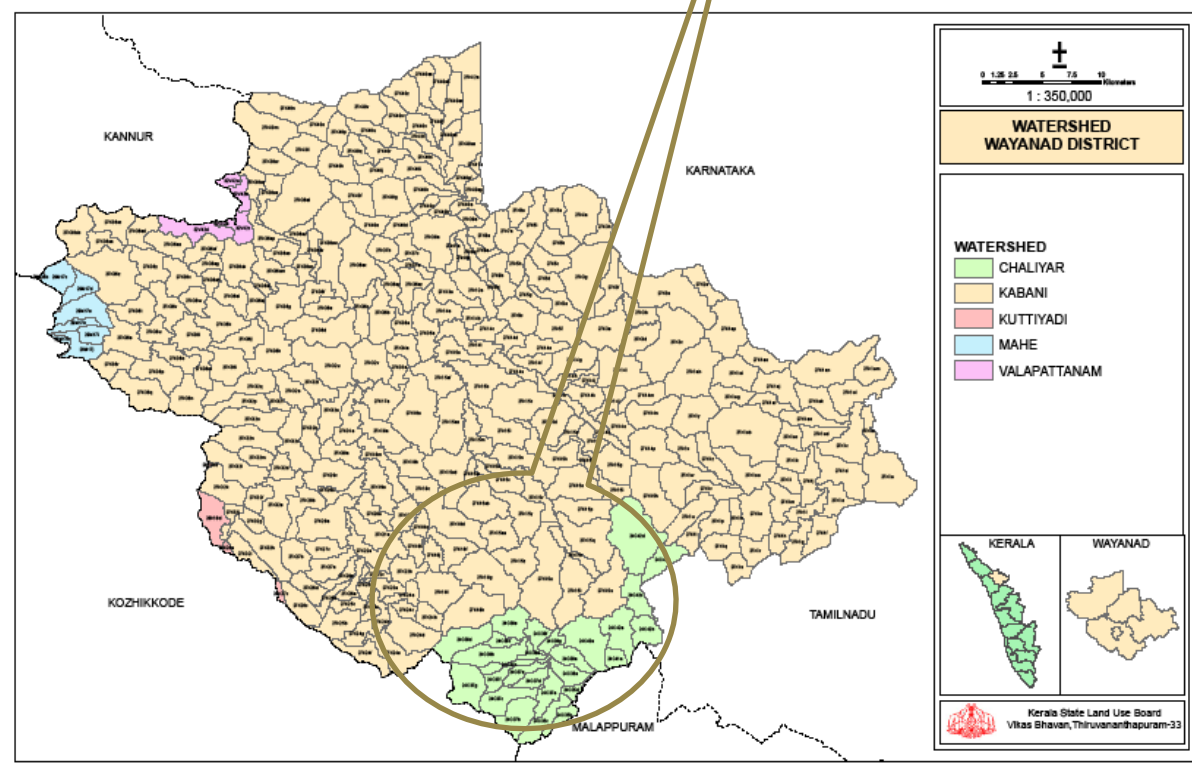
EDUCATING YOUTH FOR INHERITING THE CULTURAL HERITAGE AND CONSERVATION:

Experiences of MSSRF
from Wayanad District
of Kerala, India





Intervention site:
 South India:
 Western Ghats-
 Kerala-
 Wayanad district-
Chaliyar and Kabani
Watershed areas (500 km²)



Presentation outline



ECOSYSTEM SERVICES

Supporting

- Nutrient cycling
- Soil formation
- Primary production

Provisioning

- Food
- Water
- Wood and fiber
- Fuel

Regulating

- Climate regulation
- Flood regulation
- Disease regulation
- Water purification

Cultural

- Aesthetic
- Spiritual
- Educational
- Recreational

THE CORE PROBLEM:

SIMPLIFICATION OF AGRICULTURAL LANDSCAPES

resulting into:

1. High Degradation of BD & Ecosystem Services
2. Change in the associated Culture and Traditions

Western Ghats

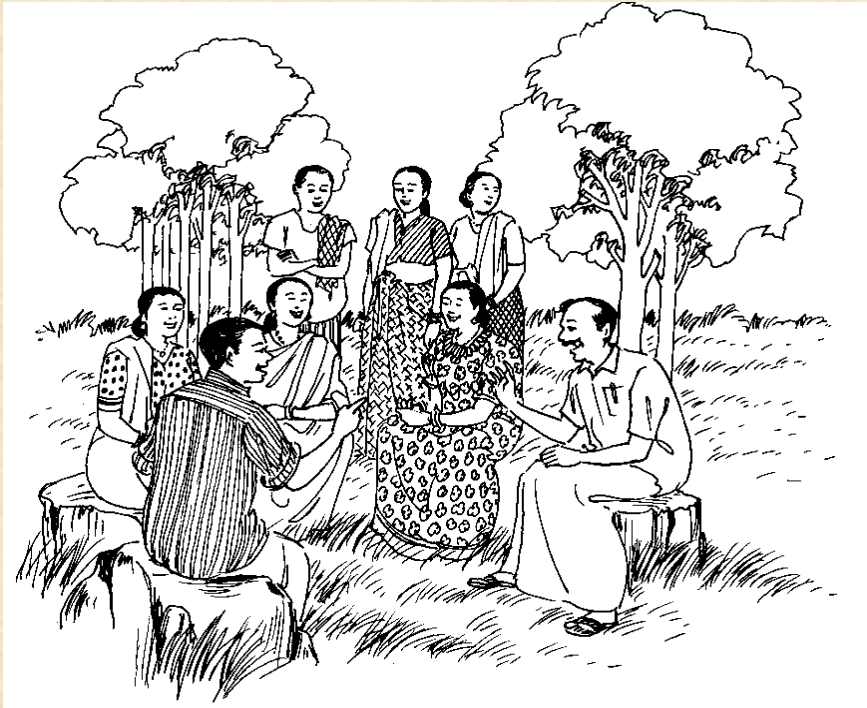
- Just 6% of the total land area of India, but with >30% of biodiversity of the country
- High percentage of Endemism
- Primary centre of origin of Pepper and Cardamom
- Rich Crop Wild relatives
- Rich diversity of NWFPs Livelihood source of more than 200 million people
- Home to diverse social, religious, and linguistic societies
- 2,000 and 8,000 millimeters of annual rainfall, the Western Ghats performs important hydrological and watershed functions



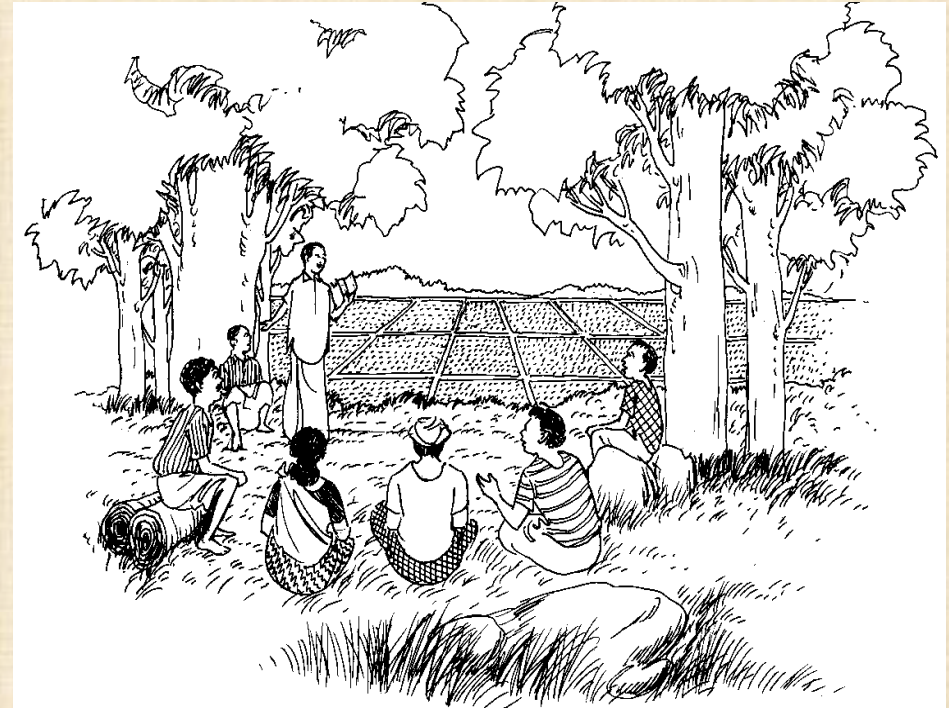
VILLAGE DEVELOPMENT IS NO MORE GREEN RATHER IT IS “RED”
STATUS OF 7 HIGH VAUE“SEPL” ELEMENTS OF AGRICULTURAL LANDSCAPES IN WAYANAD

Socio-Ecological Production Landscape Elements	Functions and Functional Status	Changes in place
<i>Vayals</i> Rice Paddies	Food Production, Water Management, Biodiversity Conservation ↓	Alternate Land Use: Banana, Areca Conversion for Non Agri purposes
<i>Kappi thottam</i> Shade Coffee Groves	Crop production, Livelihood, Biodiversity conservation ↓ Local climate control	Changing to SUN COFEE by removing all shade trees
<i>Purayidam</i> Home Gardens	Food production, Nutrition, Livelihoods, Biodiversity conservation ↓	Complete Disappearance as no people at home to maintain them
<i>Purambokku</i> Common property area	Biodiversity conservation, medicinal plants, wild food plants/wild fruits ↓	Fast Development and no more such places
<i>Kavu/Thara</i> Sacred Groves	Cultural heritage, biodiversity conservation ↓	Highly Degraded and Fast Disappearing
<i>Thalakkulam</i> Head Ponds	Water conservation and Purification ↓	Complete Change/reduced water flow to such swamps because of destruction of the catchment areas
<i>Puzha, Thodu</i> Small Streams and Canals	Irrigation, Water management, biodiversity conservation, wild foods ↓	Appear only during Monsoons. Highly polluted

Current Efforts:
Educational Empowerment of Youth and Children for
Conservation and Enhancement of
BIODIVERSITY OF VILLAGES



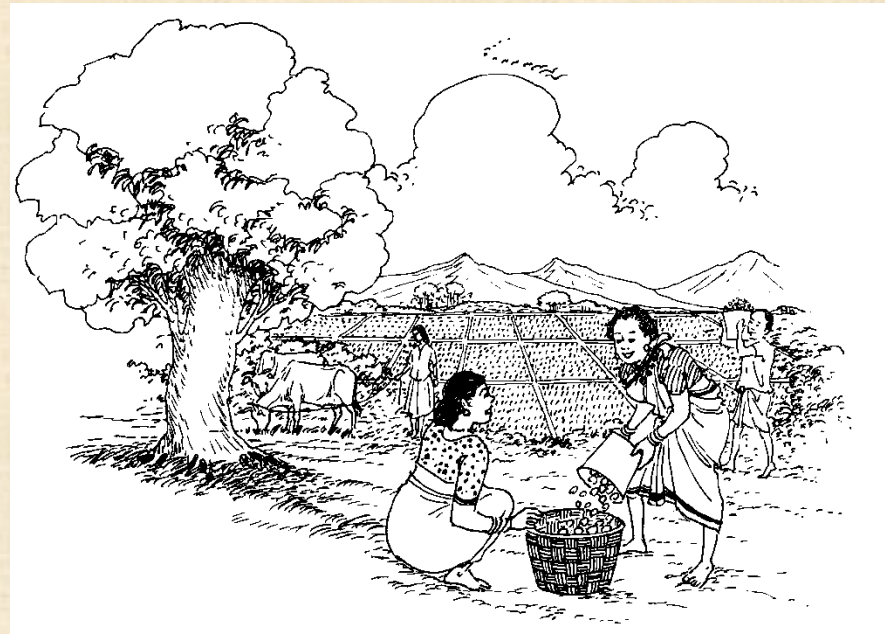
Intervention 1:
BIODIVERSITY CONSERVATION CORPS



Intervention 2:
EVERY-CHILD A SCIENTIST INITIATIVE

Aiming to Achieve 4 Objectives that are inter-related

- Build capacity of village children and youth to study the critical SEPLs by combining knowledge from **Peoples Science** and **Modern Science**;
- Revitalize the fading conservation and cultural traditions of villages through organized efforts of a **Corp of “Green Development Fighters”**;
- **Popularize Science Education** in Villages through innovative methods amongst the most under privileged sections of the society;
- **Develop a Resource Centre** for AGRO-ECOLOGY focusing on SEPLs Study and Management



Responses Required to achieve the objectives: **Need of an Integrated Approach Based on the MEA Framework**

Legal

(Strict rules and regulations for sustainable Management of AGRICULTURAL LANDSCAPES (SEPLs) and for Good Governance)

Economic

(Skill Development in Sustainable Resource Management approach that integrate principles and methods of 4 Cs: CONSERVATION CULTIVATION, CONSUMPTION & COMMERCIALIZATION)

Cognitive

(Participatory Management of Agricultural Landscapes by involving all key stakeholders especially Youth and Local Self Governments)

Social & Behavioral

(Intensive Public Awareness Programs and Educational Empowerment of New Generation focusing on the value and importance of 'GREENING' the Economic Growth)

Science & Technological

(Integration of Peoples' Science and Modern Science to understand better the Biodiversity and Ecosystem Services of AGRICULTURAL LANDSCAPES & AGRO-ECOLOGY)

Specific Activities that qualify the Responses

Response Area	Response Type	Proposed Activities
LEGAL	Strict rules and regulations for sustainable Management of AGRICULTURAL LANDSCAPES (SEPLs) and for Good Governance	<p>Legal and Genetic Literacy of Youth focusing on three important legislation of India:</p> <ul style="list-style-type: none"> • Biodiversity Act 2002 • PPV and Farmers' Right Act 2001 • The Protection of Wetlands Act 2007
ECONOMIC	Value Addition and Marketing of various components of AGRO-BIODIVERSITY AND AGRICULTURAL LANDSCAPES	<p>Training program for youth aiming at promotion of FARM TOURISM/VILLAGE TOURISM /RESPONSIBLE TOURISM and production and marketing of value added Farm products.</p>
SOCIAL AND BEHAVIOURAL	Intensive Public Awareness Programs and Educational Empowerment of New Generation for 'GREENING' the Economic Growth	<p>Education on principles and practices of GREEN ECONOMY and SUSTAINABLE DEVELOPMENT, and up-scaling of MSSRF 's 'EVERY CHILD A SCIENTIST' Initiative</p>
SCIENCE & TECHNOLOGICAL	Participatory Management of the AGRICULTURAL LANDSCAPES	<p>Participatory preparation of VILLAGE RESOURCE MAPS focusing into: Local Biodiversity, Agro-biodiversity and Formation of BIODIVERSITY MANAGEMENT GROUPS</p>

Expected Results

Result category	Deliverables	Major Indicators
<p>Outputs (within 3 years period)</p>	<p>Trained Youth in various aspects of AGRO-ECOSYSTEM Management including SUSTAINABLE INCOME GENERATION Methods</p>	<ul style="list-style-type: none"> • Lead Youths involved in Revitalization of conservation and cultural traditions in village
	<p>Educated Villagers on various aspects AGRO-ECOLOGY, SUSTAINABLE GROWTH & GREEN ECONOMY</p>	<ul style="list-style-type: none"> •Visible Means of Verification for healthy Biodiversity and Ecosystem Services in the Intervention Site
	<p>Resource Materials and Resourceful Trainers in the area of AGRO-ECOLOGY AND AGRO-BIODIVERSITY OF WAYANAD DISTRICT</p>	<ul style="list-style-type: none"> •A Well functional Resource Centre for AGROECOSYSTEM MANAGEMENT specifically all aspects of Management of SEPLs
<p>Outcomes (within next 10 years)</p>	<p>Healthy Agricultural Landscapes with regard to increased cultivation of rice and other food crops and conservation of diverse varieties and breeds</p>	<ul style="list-style-type: none"> • A SELF-RELIANT MODEL VILLAGE FOR SUSTAINABLE AGRICULTURAL GROWTH

What IPSI Can Do to Sustain these Interventions?



LAUNCH A 10 YEAR GLOBAL YOUTH EMPOWERMENT PROGRAM TO SAVE, STUDY AND USE TRADITIONAL AGRICULTURAL LANDSCAPES



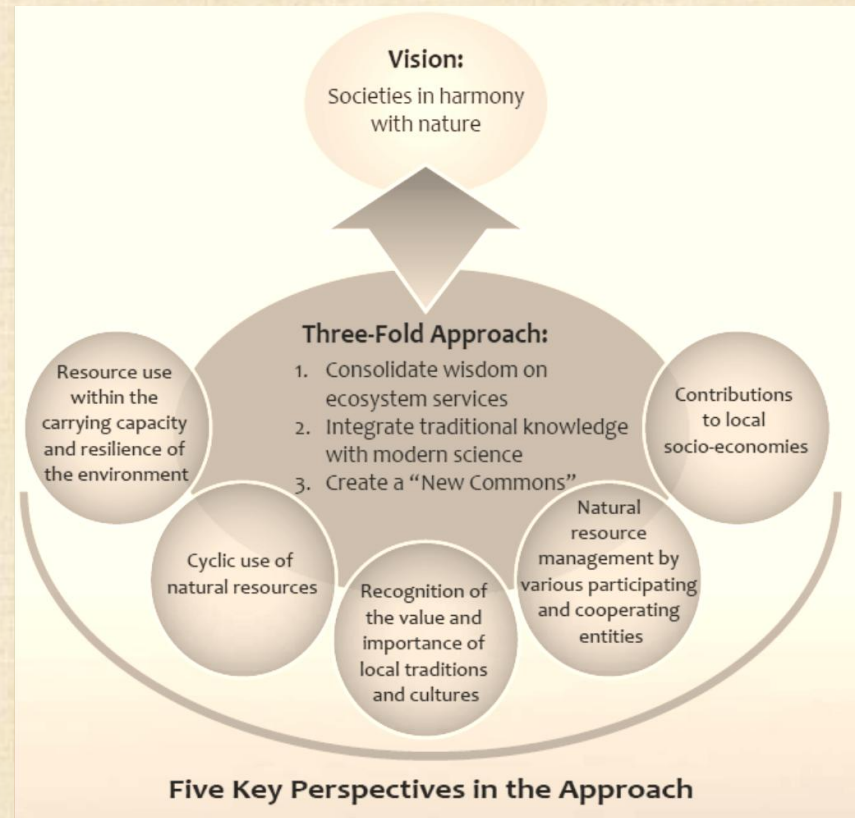
XIth Conference of Parties
CONVENTION ON BIOLOGICAL DIVERSITY
HYDERABAD INDIA 2012



RIO+20
United Nations
Conference on
Sustainable
Development



United Nations Decade on Biodiversity



**YENG for SEPALS (YOUTH EMPOWERMENT NETWORK
GLOBAL for SOCIO-ECOLOGICAL PRODUCTION
ACTIVE LANDSCAPES)**

**LET'S WORK TOGETHER FOR THIS GOAL BY
LOOKING INTO THESE GLOBAL MANDATES**

THANK YOU