

# Sustainable Development and Resilience in Southern Transylvania, Romania



Friederike Mikulčak

Faculty of Sustainability, Leuphana University Lüneburg, Germany

IPSI-2, 13-14 March 2012, Nairobi

# Project background

## Goal

- Develop a holistic understanding of the Saxon area of Transylvania (Romania) as SEPL
- Identify pathways for its sustainable development

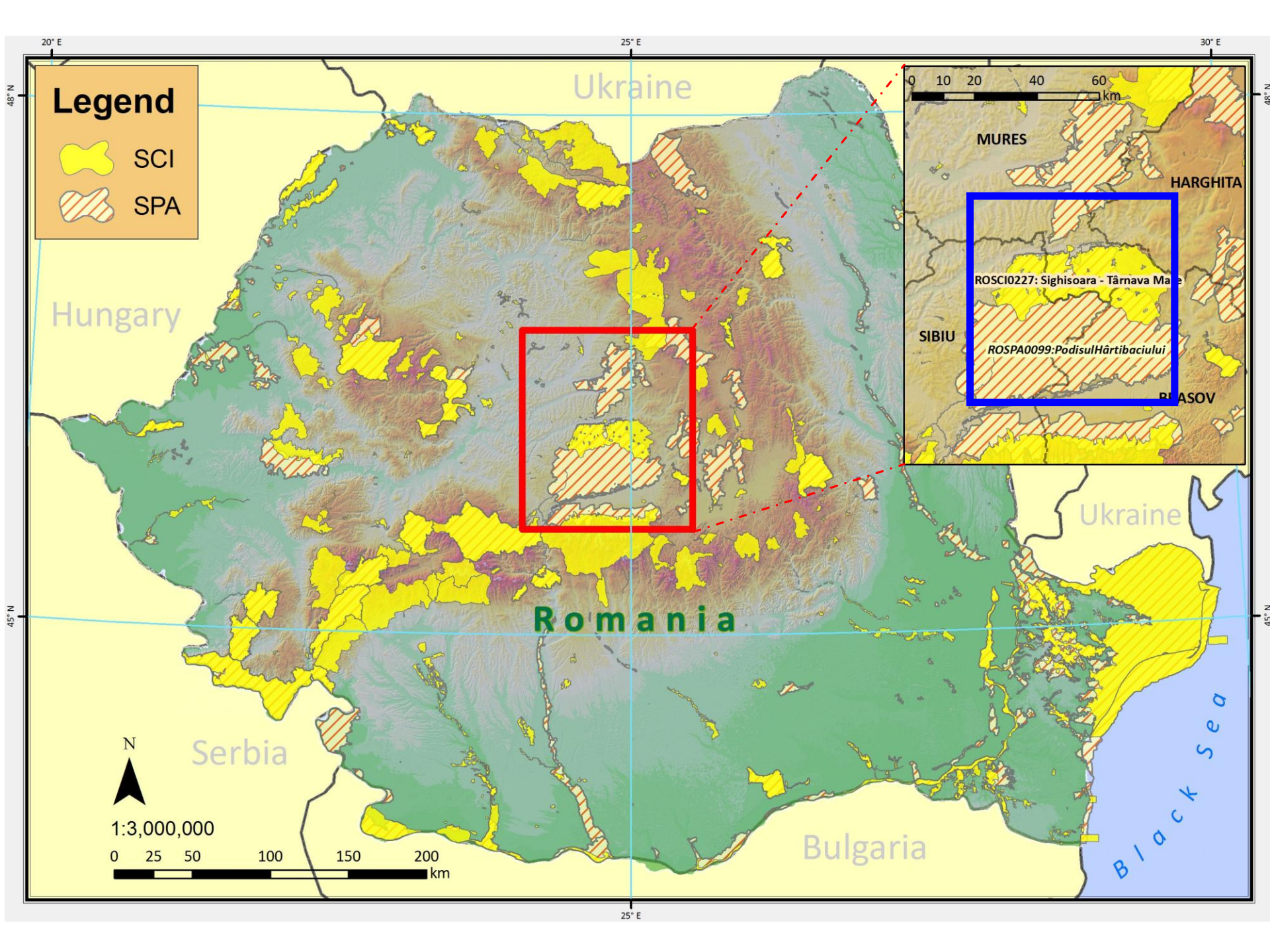
## Financing

- German Ministry for Education
- Alexander von Humboldt Foundation

# Research Approach

Landscape level and local level

- (1) Analysis of land use heterogeneity and regional biodiversity (hotspots)
- (2) Mapping of regional ecosystem services and their perception by local land users
- (3) Mapping of formal and informal institutions that impact regional land usage
- (4) Scenario development





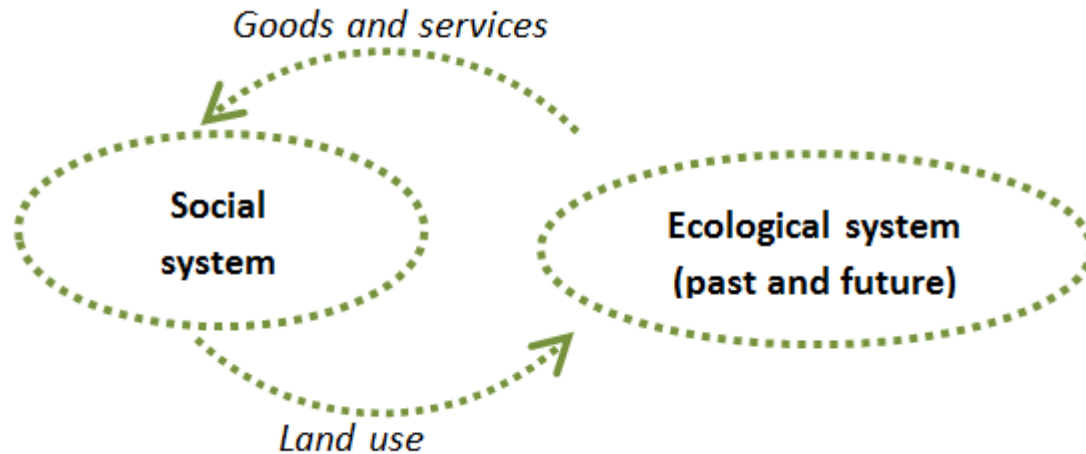


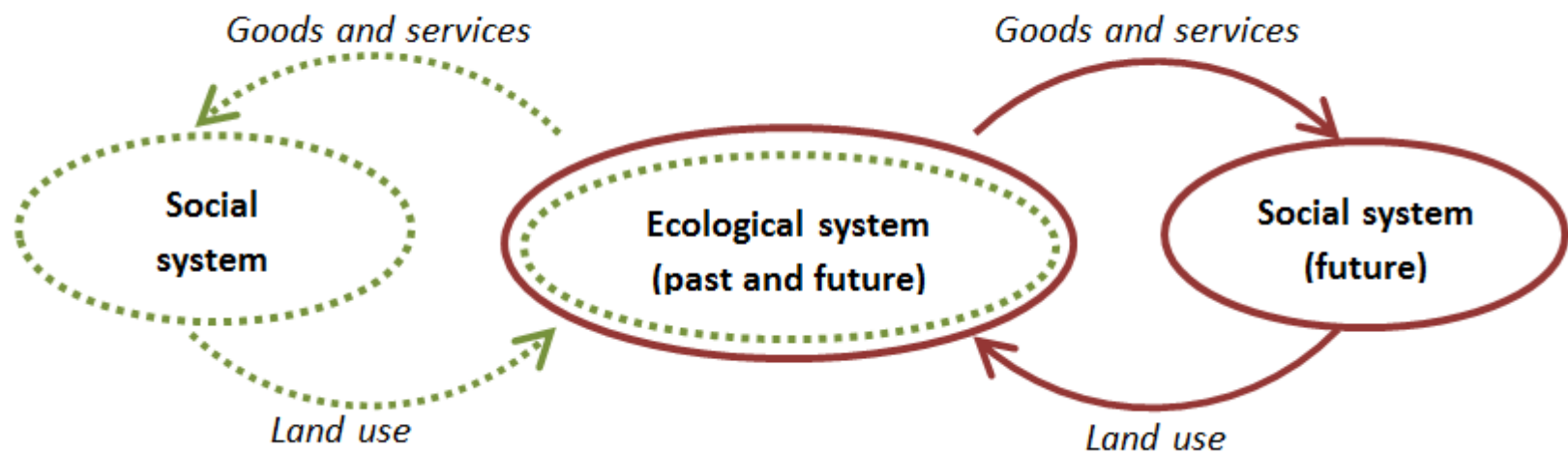


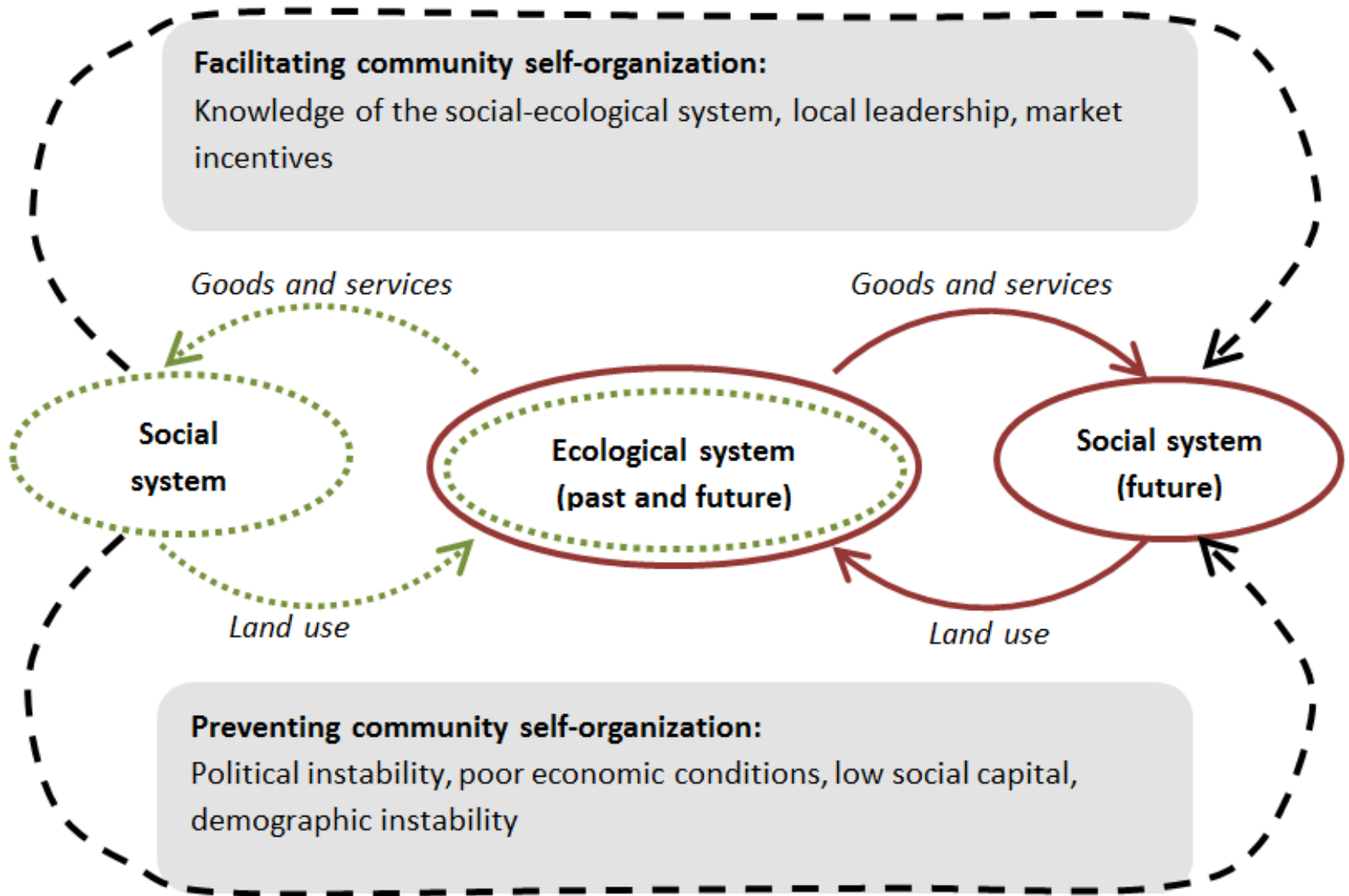




# How can socioeconomic development and ecological sustainability be harmonised?

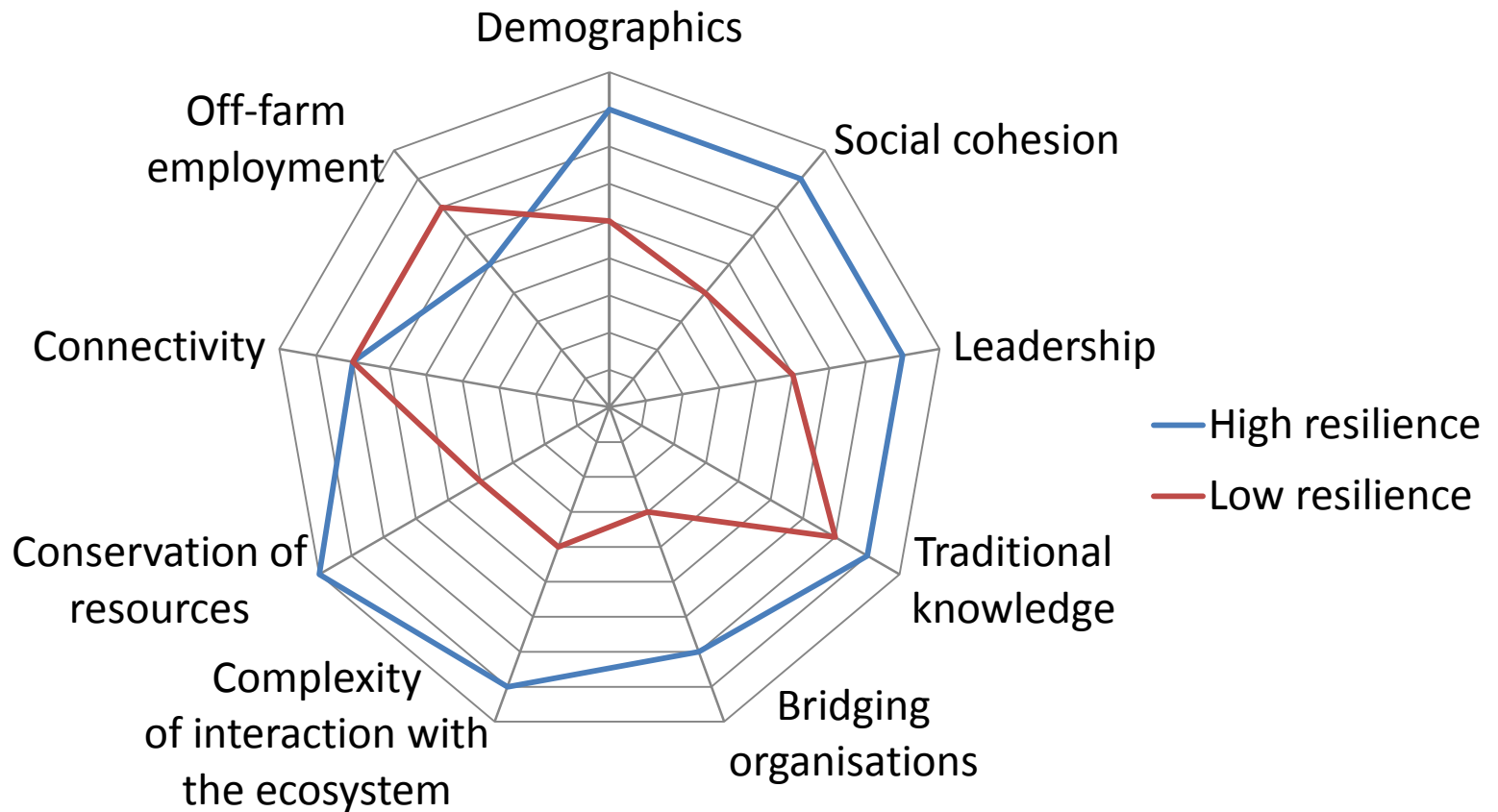






Source: Fischer et al. 2012 (in press)

# Application of Resilience Indicators



Thank you for listening 😊

