



GEF-Satoyama
Project



GEF-SATOYAMA PROJECT EXPERIENCES TO DATE AND FUTURE PLAN FOR MAINSTREAMING

April 20, 2016

Satoyama Initiative Regional Workshop
Sabah, Malaysia

CONSERVATION
INTERNATIONAL



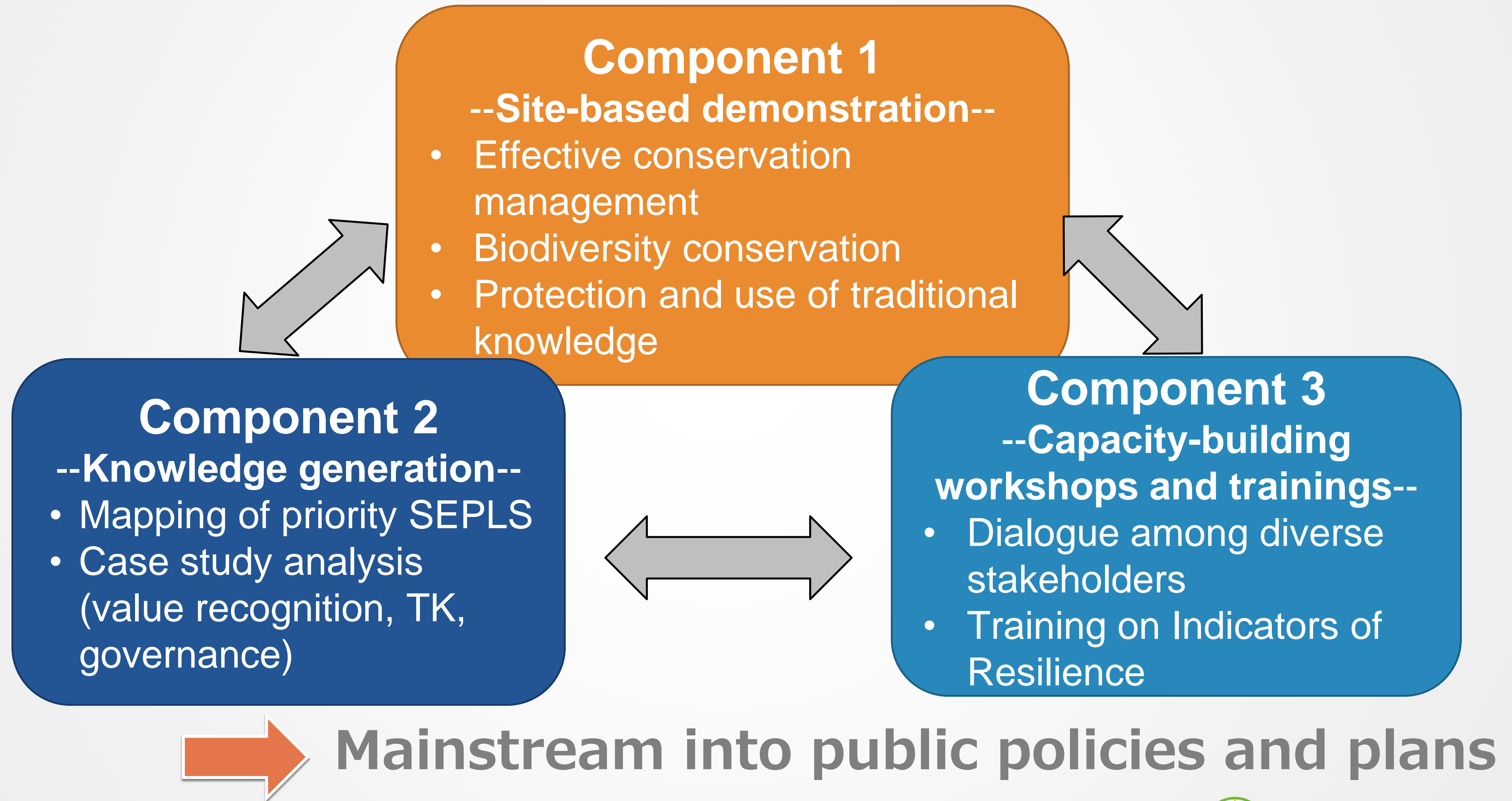
GEF-SATOYAMA PROJECT

Mainstreaming biodiversity conservation and sustainable management in priority Socio-ecological Production Landscapes and Seascapes

- **Project Vision:** **Society in harmony with nature**, with sustainable primary production sector based on traditional and modern wisdom, and making significant contributions to global targets for conservation of biological diversity
- **Project Objective:** **To mainstream conservation and sustainable use of biodiversity and ecosystem services**, while improving human well-being in priority Socio-Ecological Production Landscapes and Seascapes



PROJECT COMPONENT

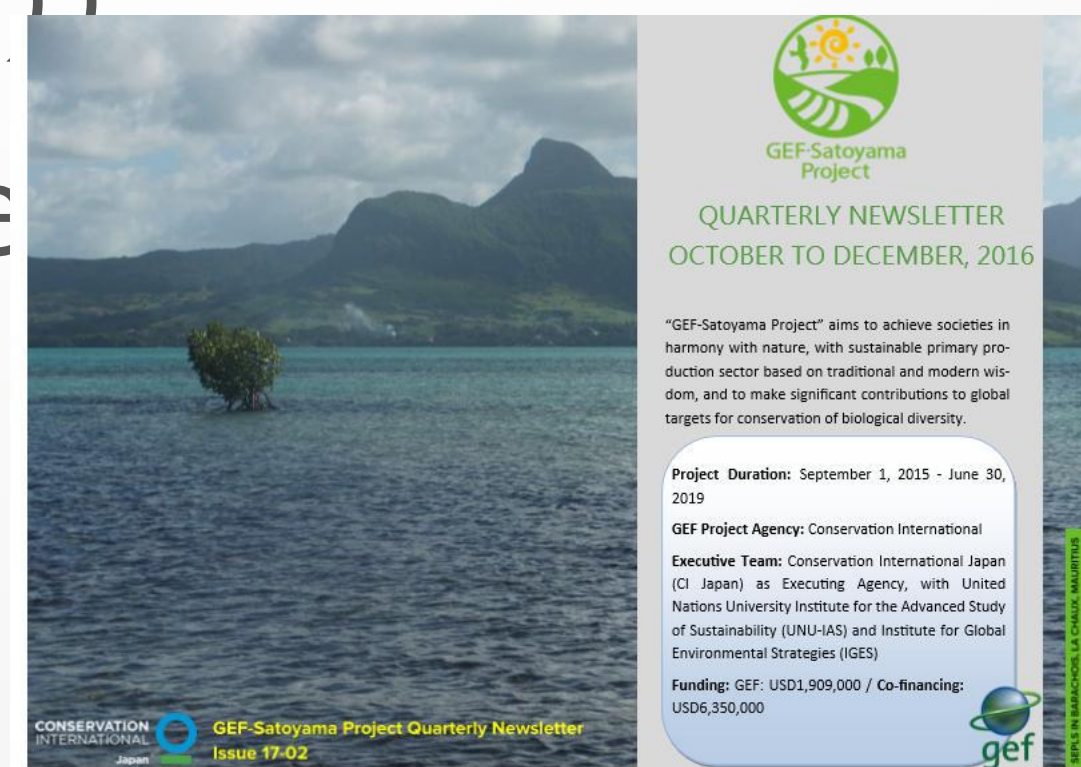


INSTITUTIONAL ARRANGEMENT



PROJECT ACTIVITIES TO DATE

- Calls for Proposals in 3 Biodiversity Hotspots (130 proposals) -> 10 projects implementing activities
- Inception meetings for subgrant project proponents
- Regional training on the Indicators of Resilience in SEPLS (Thailand, Madagascar, Ecuador, Hawaii (TI ICN-WCC))



GEF-Satoyama Project

10 SITE-BASED PROJECTS

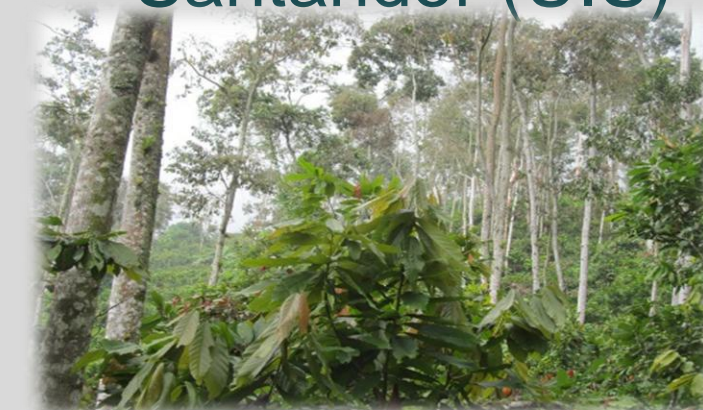


The Energy and Resources Institute (TERI)



Inter Mountain Peoples' Education and Culture in Thailand Association (IMPECT)

Universidad Industrial de Santander (UIS)



Fauna & Flora International (FFI)



Green Island Foundation (GIF)



Wildlife Conservation Society (WCS)



Dahari



Environnemental Protection & Conservation Organisation (EPCO)



Fundación para la Investigación y Desarrollo Social (FIDES)



Asociación Amazónicas por la Amazonía (AMPA)



SUBGRANT PROJECT ACTIVITIES

A diverse set of activities on the ground:

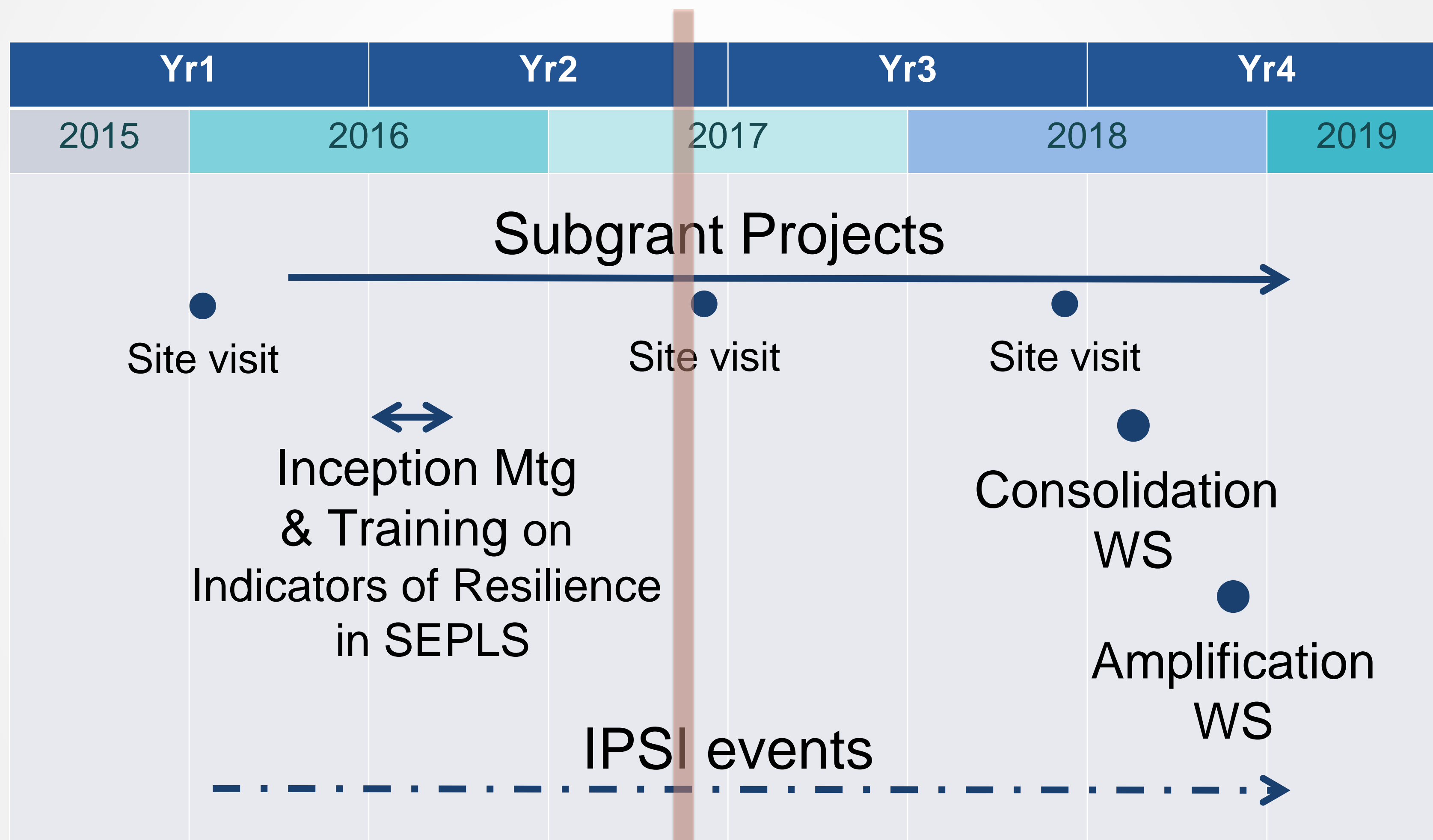
- Forest restoration
- Fisheries co-management
- Education and awareness raising
- Agricultural technique development
- Community Conserved Area establishment
- Species inventory
- Traditional practices documentation and transmission to youth
- Private sector partnership

Safeguard measures and M&E

- Stakeholder engagement
- Gender mainstreaming
- Indicators of Resilience in SEPLS



PROJECT SCHEDULE



AICHI BIODIVERSITY TARGETS

The Project is relevant and contribute to the achievement of:

ABT 5: Reducing habitat loss

ABT 7: Sustainably managed agriculture, aquaculture and forestry

ABT 11: Protected areas; effective management and connectivity

ABT 12: Prevention of species extinction

ABT 14: Ecosystem restoration

ABT 15: Ecosystem resilience and carbon stocks for climate change mitigation and adaptation

ABT 18: Traditional knowledge

ABT 19: Knowledge and science base

ABT 20: Resource mobilization



SUSTAINABLE DEVELOPMENT GOALS (SDGs)



 Specifically addressed

 Indirectly addressed



http://gef-satoyama.net/



GEF-Satoyama
Project

HOME

PROJECT COMPONENTS

SUBGRANT PROJECTS

RESOURCES

GEF-Satoyama Project

Mainstreaming Biodiversity Conservation and Sustainable Management in Priority Socio-ecological Production Landscapes and Seascapes

“GEF-Satoyama Project” aims to achieve societies in harmony with nature, with sustainable primary production sector based on traditional and modern wisdom, and making significant contributions to global targets for conservation of biological diversity.

While protecting pristine natural areas and other high conservation value areas continue to be important, global conservation of biodiversity will not be achieved without the sustainable management of areas in which people and nature interact. Production landscapes and seascapes refer to the space in which primary industry activities (agriculture, forestry and fisheries) take place in general. Among the production landscapes and seascapes, those that integrate the values of biodiversity and social aspects harmoniously with production activities, such that production activities support biodiversity and vice versa, are termed the socio-ecological production landscapes and seascapes (SEPLS), the focus of this project. This project intends to address the barriers that SEPLS faces globally, such as insufficient recognition of their values and dynamic nature and weak governance, and contribute to the achievement of multiple Aichi Biodiversity Targets and Sustainable Development Goals.

The GEF-Satoyama Project is funded by the Global Environment Facility (GEF), implemented by Conservation International’s CI-GEF Project Agency and executed by Conservation International Japan in cooperation with the United Nations University Institute for the Advanced Study of Sustainability (UNU-IAS, the Secretariat of the International Partnership for the Satoyama Initiative) and Institute for Global Environmental Strategies (IGES).

NEWS

- 2016.09.07 [Indicators of Resilience Training in Tropical Andes Biodiversity Hotspot](#)
- 2016.09.02 [Indicators of Resilience training at IUCN World Conservation Congress](#)
- 2016.08.19 [Indicators of Resilience Training in Madagascar and Indian Ocean Islands Biodiversity Hotspot](#)

▲ Archives

▲ PageTop



© 2016 Conservation International

[ABOUT US](#) | [CONTACT](#) | [PRIVACY POLICY](#) | [TERMS OF USE](#)



GEF-Satoyama Project



FUTURE PLAN

- Subgrant projects as case studies of mainstreaming
- Knowledge products on the three themes (recognition of SEPLS value, traditional knowledge, governance)
- Consolidation workshop
- Amplification to broader audience



BEYOND THE PROJECT

- Successful cases and knowledge products that others can reference and use
- Scaling up at local and global levels
- Stimulating the mobilization of resources to/for SEPLS



VIDEO ON THE INDICATORS OF RESILIENCE IN SEPLS

- An initiative of the Institute for Global Environmental Strategies (IGES)
- Based on the training in Ecuador conducted under the GEF-Satoyama Project
- Still draft version; improvements are being made
- Overview video for an interest catcher: a technical one follows



SIDE EVENT



Satoyama Dialogue: Tools, Technology & People

Conservation International and Live and Learn are hosting a "side event" to foster discussions among the participants to the IPSI Regional Workshop on two specific topics. The Indicators of Resilience in SEPLS is a tool developed by IPSI members that can be used to assess and strengthen the resilience of SEPLS in changing environmental and social conditions. Projects such as COMDEKS and GEF-Satoyama Project are using the Indicators to monitor the projects' interventions and to improve community resilience. The first part is an opportunity to hear directly from partners who have used or plan to use the Indicators. In collaboration with like-minded partners of the IPSI network, there is a potential for global contribution in sustainable development. The second part of the side event will explore the possibility of information technology on knowledge and experience sharing.

Venue: Mahua Room
Date: April 20, 2017
Time: 17:00 to 19:00

Session 1: The Use of Indicators of Resilience in SEPLS (17:00 - 18:00)
To share experiences and ideas in the use of the Indicators of Resilience as a tool for the monitoring and evaluation of SEPLS.

- Experiences in using the Indicators in Karen Communities in Northern Thailand - Dr. Prasert Trakansuphakon (10 minutes + 5 minutes Q&A)
- Participatory Evaluation of Indicators of Resilience in SEPLS: A Case Study of Taiwan- Dr. Kuang-Chung Lee (10 minutes+ 5 minutes Q&A)
- GEF SGP Supporting Community Conserved Areas in China - Ms. Yi Liu (10 minutes+ 5 minutes Q&A)
- GENERAL DISCUSSION (15 minutes)

Session 2: IT Use Under IPSI (18:00 to 19:00)
To explore the available IT resources and their use by IPSI members.

- IPSI and Information Technology - Mr. Jady Smith (10 minutes)
- Global mapping of Priority SEPLS under the GEF-Satoyama Project - Dr. Yoji Natori (5 minutes)
- Example of IT use for mapping of rotational farming in Thailand - Dr. Prasert Trakansuphakon (5 minutes)
- GENERAL DISCUSSION (40 minutes)

Speakers



Dr. Prasert Trakansuphakon
Chair of IMPECT
Thailand



Dr. Kuang-Chung Lee
Associate professor
National Dong-Hwa University
Taiwan



Ms. Yi Liu
National Coordinator
Small Grant Program, UNDP
China



Mr. Jady Smith
Senior Advisor
Live and Learn
Australia



Dr. Yoji Natori
Manager, GEF-Satoyama Project
Conservation International
Japan

EVERYONE IS INVITED. REFRESHMENTS WILL BE SERVED.

Satoyama Dialogue: Tools, Technology & People

Venue: Mahua Room
Date: April 20, 2017
Time: 17:00 to 19:00





Thank you!

ynatori@conservation.org

