



Dayak Suaid answers to oil palm development threats to landscape and environmental services

Presentation for Satoyama Initiative for
Regional Workshop in Sabah, Malaysia

18-20 April 2017

Dico Luckyharto – Forest Peoples Programme

Barriers / challenges to mainstreaming the activities

As in rubber that took around 5 decades to be accepted as beneficial to the peoples, it goes the same with pepper and coffee. Even for coffee, they have not tried yet

©Dico Luckyharto, October 2016



Agriculture landscape in Emperiang

©Dico Luckyharto, March 2017



Agriculture landscape in Bati

How communities try to solve barriers / challenges?

- Inter-cropping
- Increase yield by using land optimally



Early stage inter-cropping

How communities try to solve barriers / challenges?



- Through their traditional knowledge
- Market access for their products
- Beauty for eco-tourism and conservation



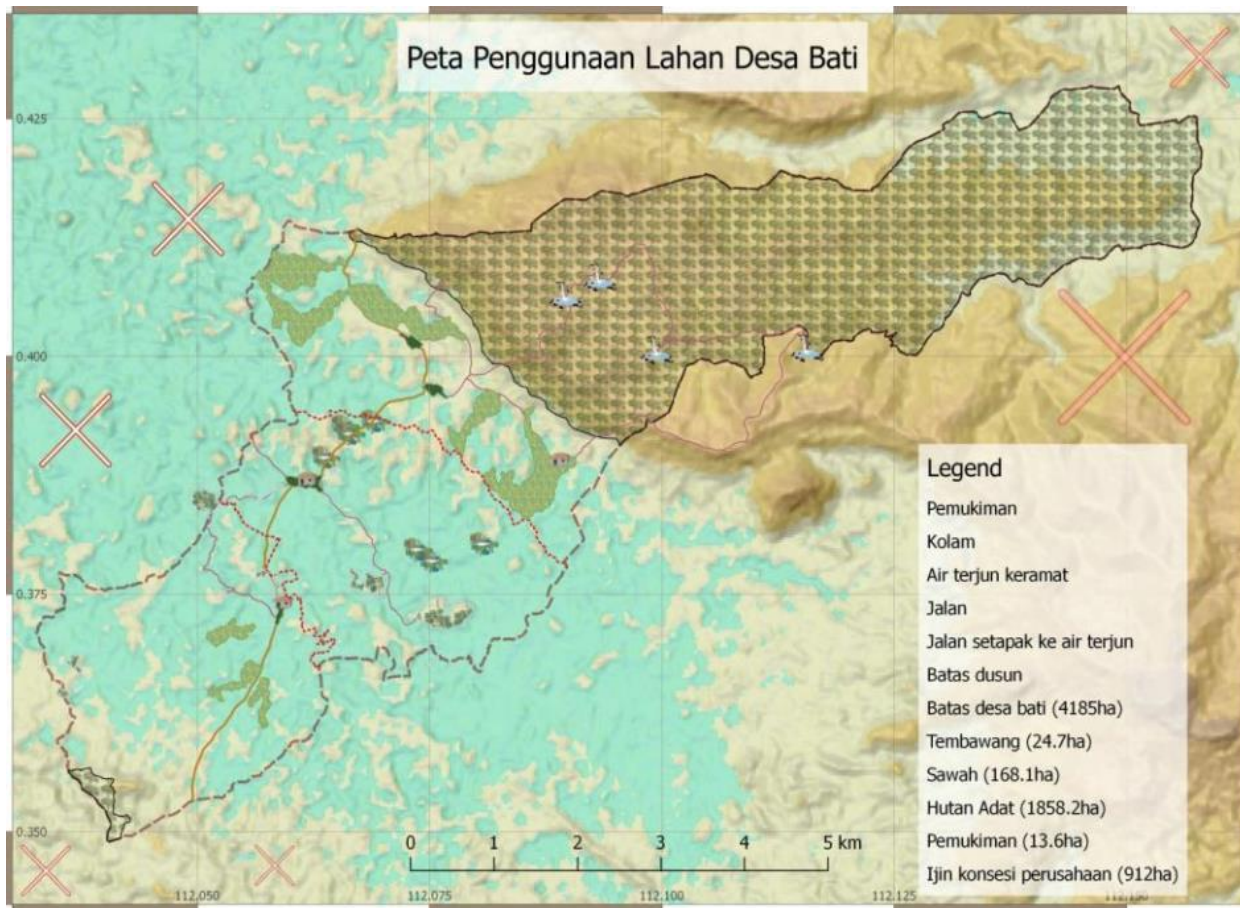
©Dico Luckyharto, March 2017

Bati village head shows the fruits seedlings that will be planted around the garden

How communities try to solve barriers / challenges?



Forest as beauty and conservation



Source: FPP, Link-AR Borneo (Aug 2016)

Land use map of Bati

Recommendations



- Strong customary and cultural bodies and laws
- One pilot project with good impact and result can spread easily to the surrounding
- The introduction of technology could be beneficial

Thank you

