



Introduction to

The International Partnership for the Satoyama Initiative (IPSI)

and

The Satoyama Initiative Regional Workshop

William Dunbar

IPSI Secretariat

United Nations University Institute for the Advanced Study of Sustainability (UNU-IAS)



UNITED NATIONS
UNIVERSITY

UNU-IAS

Institute for the Advanced Study
of Sustainability



SATOYAMA
INITIATIVE



SATOYAMA INITIATIVE

Vision:

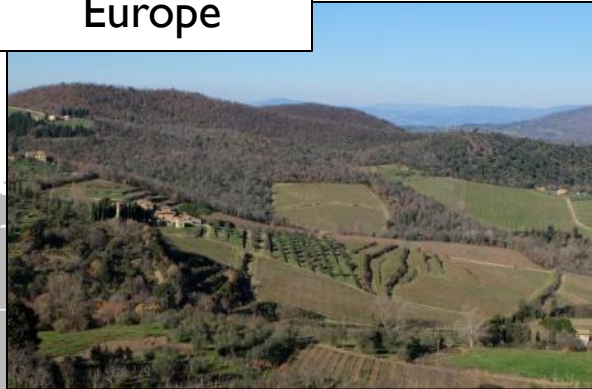
**“Societies in harmony
with nature”**

Socio-ecological production landscapes and seascapes around the world

Pacific



Europe



East Asia



The Americas



Africa



South Asia



The International Partnership for the Satoyama Initiative (IPSI)

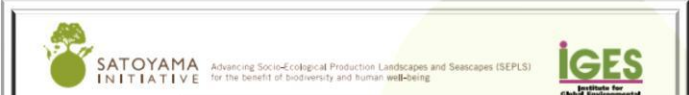
202 member organizations (gov't, NGO, private sector, academic, etc.) all over the world

Launched during CBD COP 10 in 2010



Knowledge facilitation and policy research

- **Publications**



Secretariat of the Convention on Biological Diversity

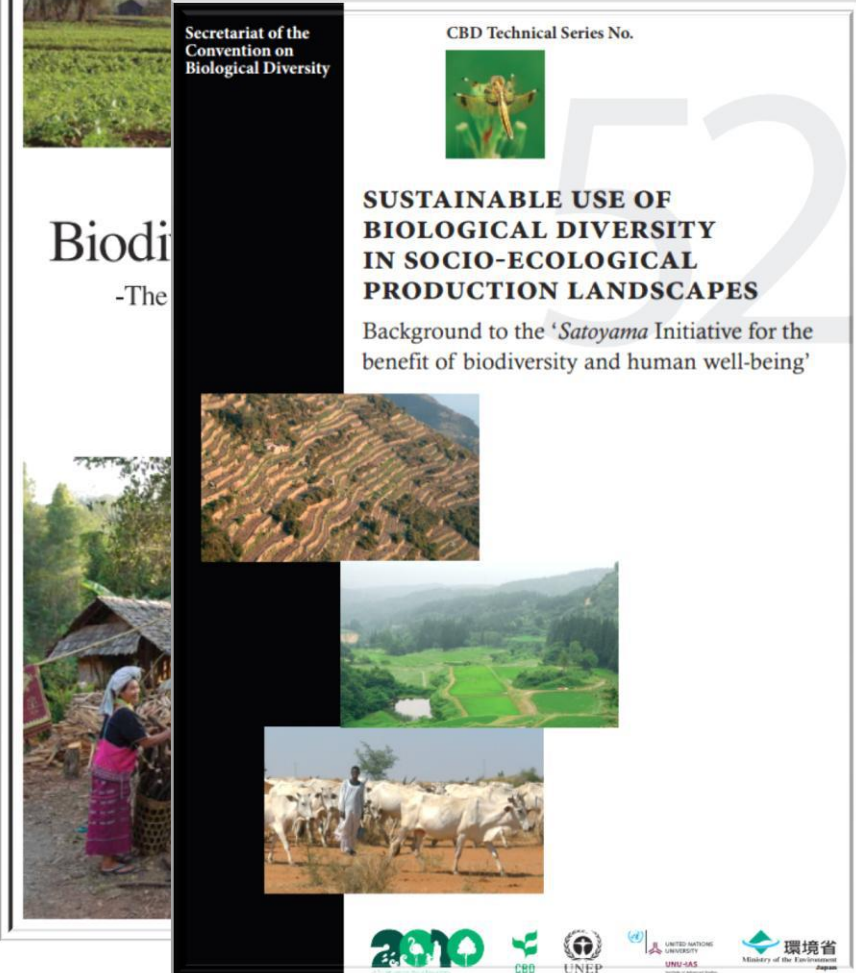
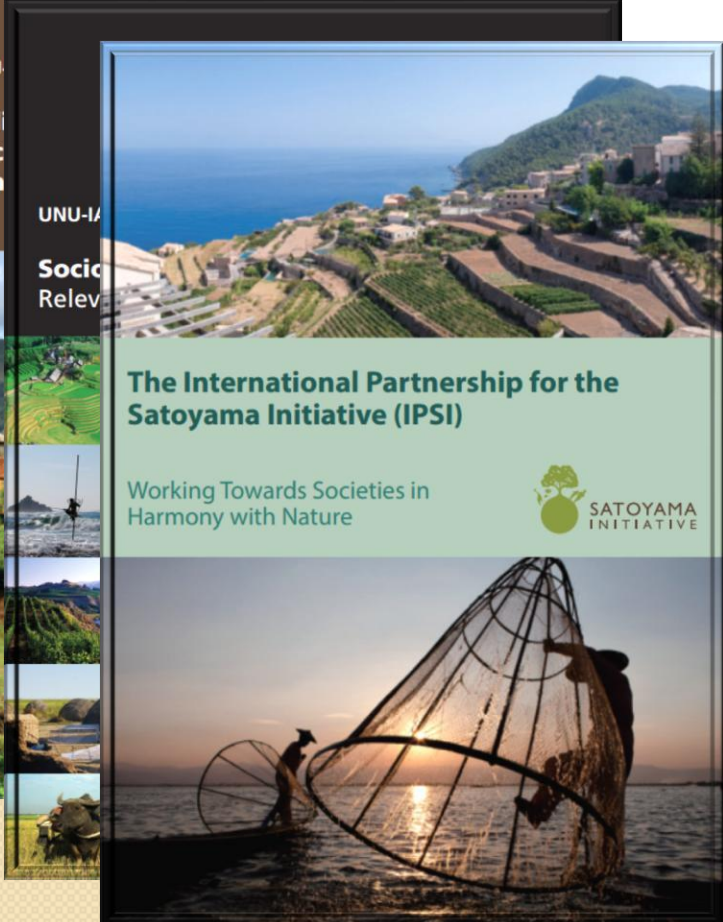
CBD Technical Series No.



Biodiversity
-The

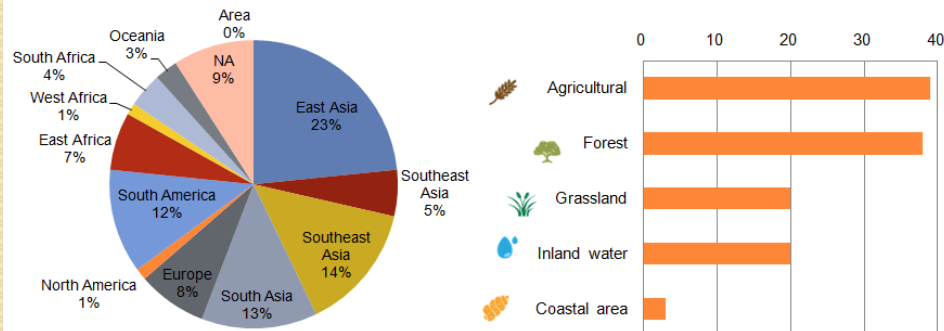
SUSTAINABLE USE OF BIOLOGICAL DIVERSITY IN SOCIO-ECOLOGICAL PRODUCTION LANDSCAPES

Background to the 'Satoyama Initiative for the benefit of biodiversity and human well-being'



Knowledge facilitation and policy research

Case Studies



#	Classification ^a	Main category ^b
1 ^c	Cluster ^d	1) knowledge facilitation, 2) policy research, 3) indicators research, 4) capacity building, 5) on-the-ground activities.
2 ^c	Scale ^d	1) Global 2) Regional, 3) National, 4) Local.
3 ^c	Region ^d	1) East Asia, 2) Southeast Asia, 3) South Asia, 4) Central Asia, 5) West Asia, 6) Oceania, 7) Europe, 8) North America, 9) Latin America and the Caribbean, 10) Africa.
5 ^c	Ecosystems ^d	1) Agricultural, 2) Forest, 3) Grassland, 4) Inland water body, 5) Coastal.
6 ^c	Organization ^d	1) National government, 2) Local government, 3) International NGO, 4) Local NGO, 5) International org., 6) University/research institute, 7) Indigenous/local community org., 8) Private sector, etc..
7 ^c	Socio-economic activity ^d	1) Agriculture, 2) Fishery, 3) Forestry, 4) Tourism, 5) Wildlife conservation, 6) Environmental education, 7) Culture, etc..
8 ^c	Research strategy (Research cases only) ^d	1) Type of research: a) Qualitative, b) Quantitative. 2) Method: a) Literature review, b) Interview, c) Questionnaire survey, d) Statistics, e) GIS 3) Number of research papers.
9 ^c	Themes ^d	1) Consolidating knowledge and promoting innovation (e.g. local traditions, culture, learning, integration of modern science and traditional knowledge). 2) Ensuring good governance and equity (e.g. interest representation, organizational responsibility, decision making, implementation). 3) Securing livelihoods and enhancing well-being (e.g. poverty reduction, community empowerment, food security, sustainable livelihood). 4) Conserving landscape/seascape diversity and ecosystems. 5) Promoting sustainable use of biodiversity (including agricultural biodiversity). 6) Empowering stakeholders (building human, institutional, financial capacities).

IPST THE INTERNATIONAL PARTNERSHIP FOR THE SATOYAMA INITIATIVE

IPST, the International Partnership for the Satoyama Initiative, promotes collaboration in the conservation and restoration of sustainable human-influenced natural environments (Bio-Biological Production Landscapes and Seascapes: BPLS) through broader global recognition of their value.

Navigation: HOME, ABOUT, IPST, **CASE STUDIES**, EVENTS, ANNOUNCEMENTS, RESOURCES

CASE STUDIES

Map controls: Map, Satellite, Google, Terms of Use

Legend: All, Forest, Coastal, Grassland, Agricultural Land, In-land Water

Categories

- Forest
- Coastal
- Grass
- Agricultural
- In-land Water

Case Studies

Mainstreaming Biodiversity into the Cocoa Growing Landscape in the Kakum Conservation Area in Ghana

Ghana (Central Region) Africa

Conservation Alliance

CONTEXT: Cocoa production is a major economic activity for rural living

Recovery of Mouthless Crab (Cardisoma grassum) Populations in Mangrove Forests of the Chone River Estuary (Ecuador)

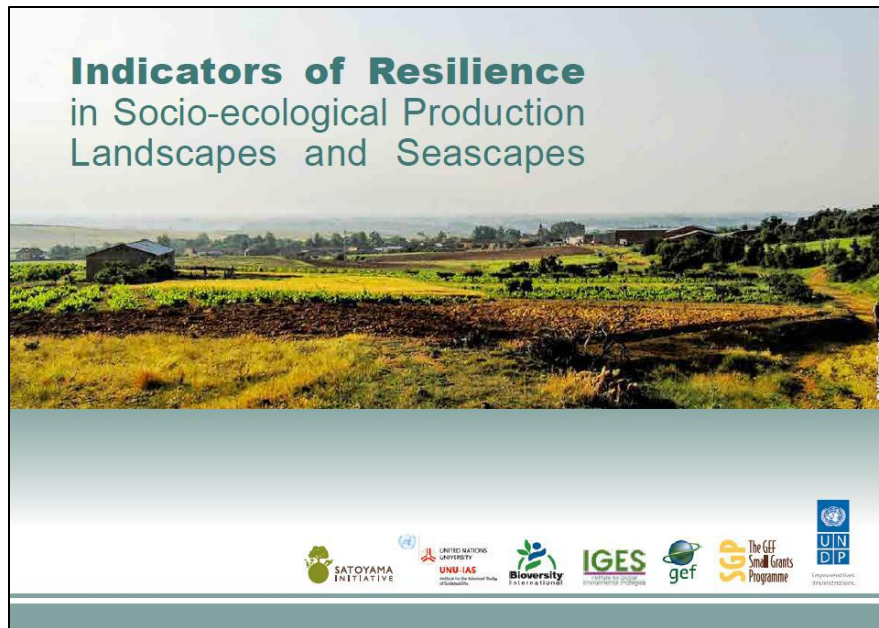
Ecuador (South America)

Foundation for Research and Social Development (FIDES)

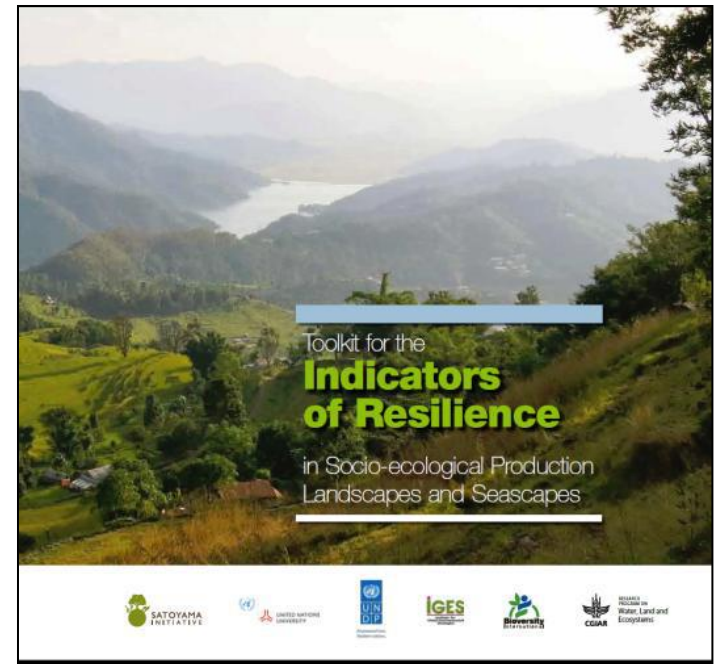
CONTEXT: Mangrove ecosystems and their importance

Indicators research

- “Indicators of Resilience in Socio-ecological Production Landscapes and Seascapes”



Brochure



Toolkit

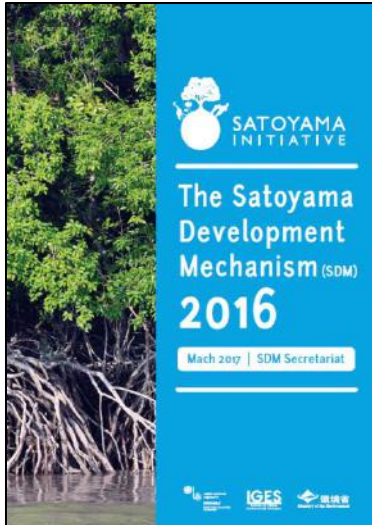
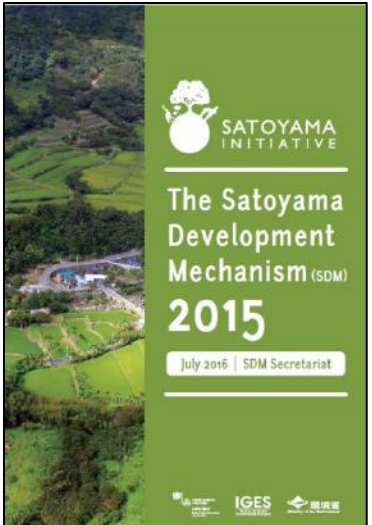
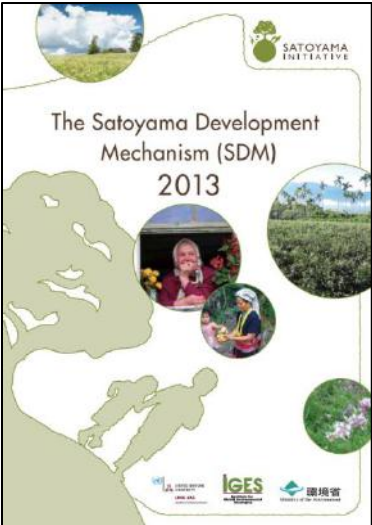
*** Indicators Training Session on 20 April, 17:00 ***

On-the-ground activities



Resource mobilization / Capacity building

- **Satoyama Development Mechanism (SDM)**



Community-based activities

1

Research activities

2

Workshops and conferences

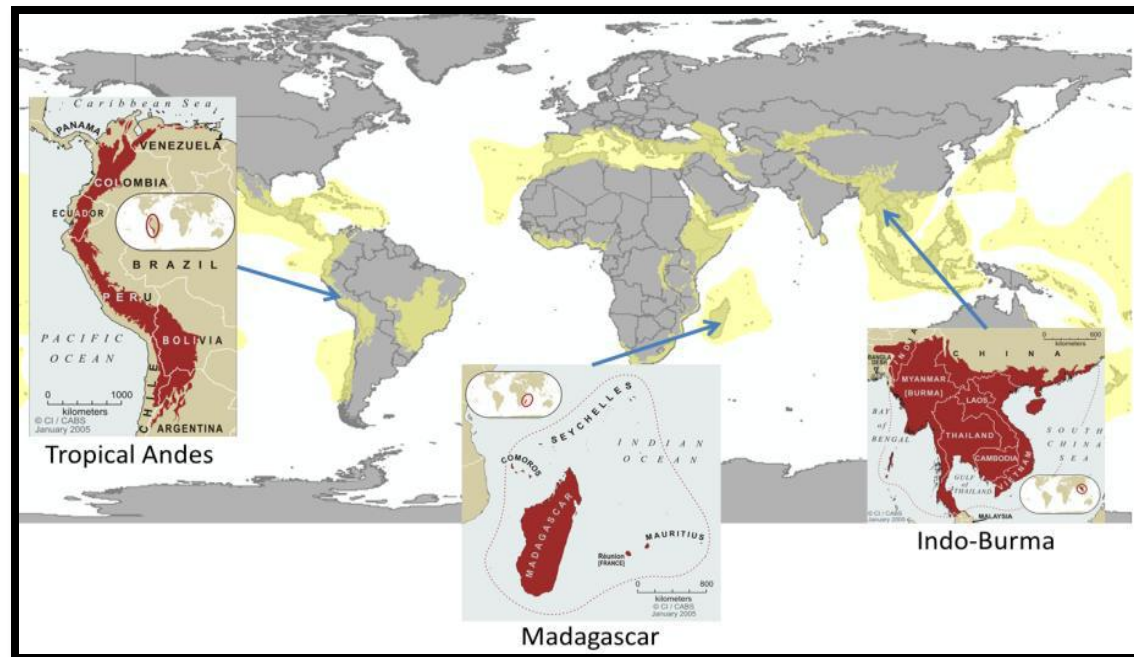
3

Capacity building

4

Resource mobilization / Capacity building

- **Mainstreaming Biodiversity Conservation and Sustainable Management in Priority Socio-ecological Production Landscapes and Seascapes (“GEF-Satoyama Project”)**



Resource mobilization / Capacity building

- **Events**



Satoyama Initiative Regional Workshop

- 2013 Kathmandu, Nepal
- 2014 Florence, Italy
- 2015 Accra, Ghana
- 2016 Cusco, Peru



Satoyama Initiative Regional Workshop in Sabah 2017

- Today AM: Opening Plenary


- Today PM: Working Groups

- Tomorrow: Excursion

- Thursday AM: Working Groups

- Thursday PM: Closing Plenary


Open
to
invited
guests
only

- 
- Today's schedule:
 - Next: Panel presentations and discussion
 - Break (for lunch)
 - PM: Working Group
 - Presentations from 5-6 speakers
 - Evening: Reception



- **Tomorrow:**

- Excursion to see management project sites around Sabah
- Details will be provided to participants later

- 
- Thursday's schedule:
 - AM: Working Groups continued
 - PM: Closing Plenary Session
 - Report back from Working Groups
 - Information sharing
 - Wrap-up and closing




- **Additional event:**

- “Satoyama Dialogue: Tools, Technology & People”
- Further details will be provided to invitees later

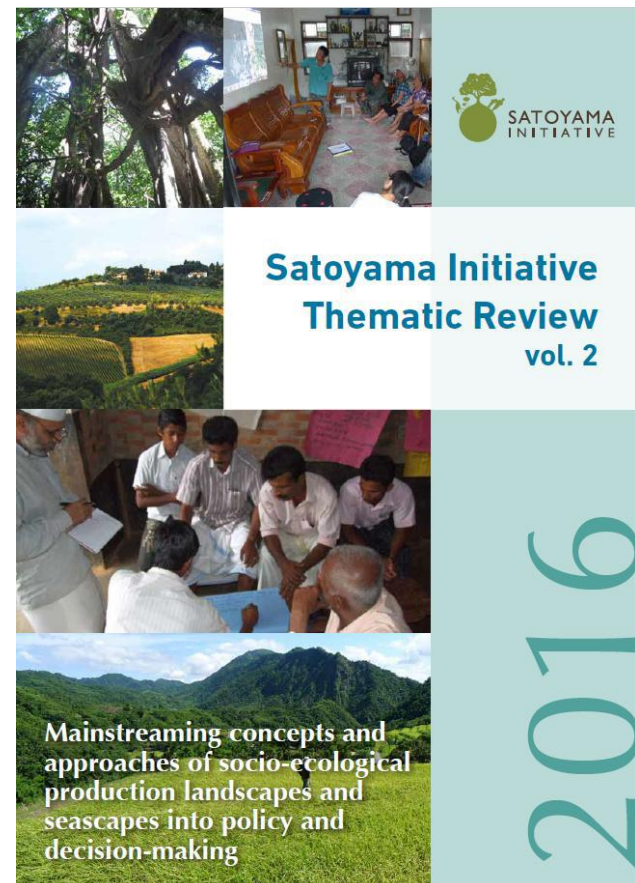
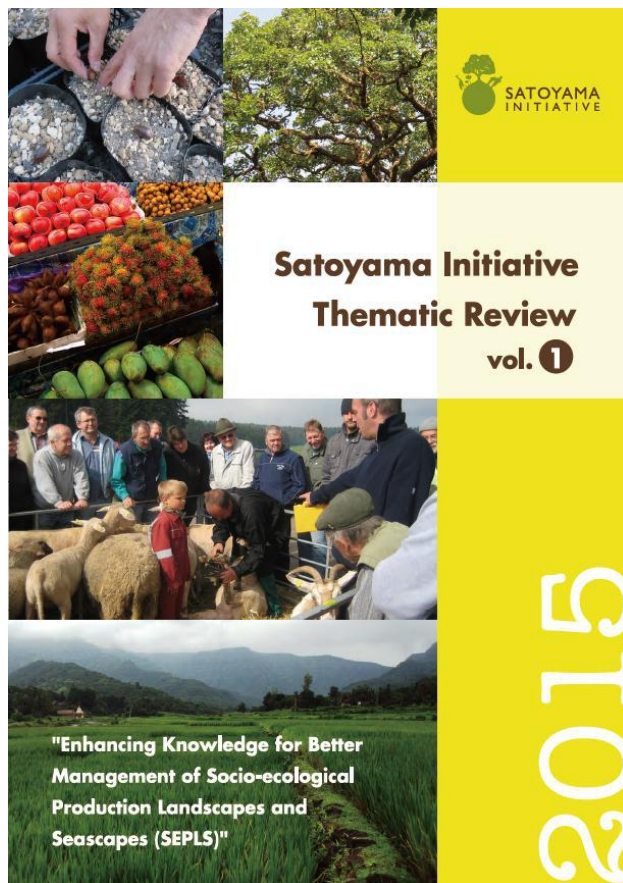


Workshop Theme

- “**Mainstreaming** concepts and approaches of socio-ecological production landscapes and seascapes in Asia”

- 
- “**Mainstreaming**” is a popular keyword these days
 - CBD COP 13 theme: “Mainstreaming Biodiversity for Well-Being”
 - But what does it mean?

- Satoyama Initiative Thematic Review

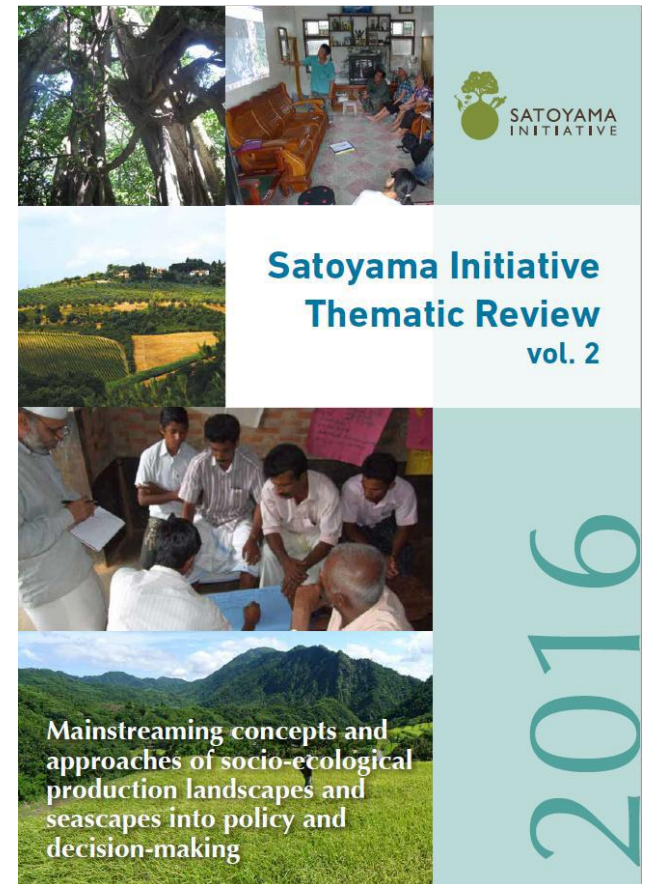


- Satoyama Initiative Thematic Review vol. 2

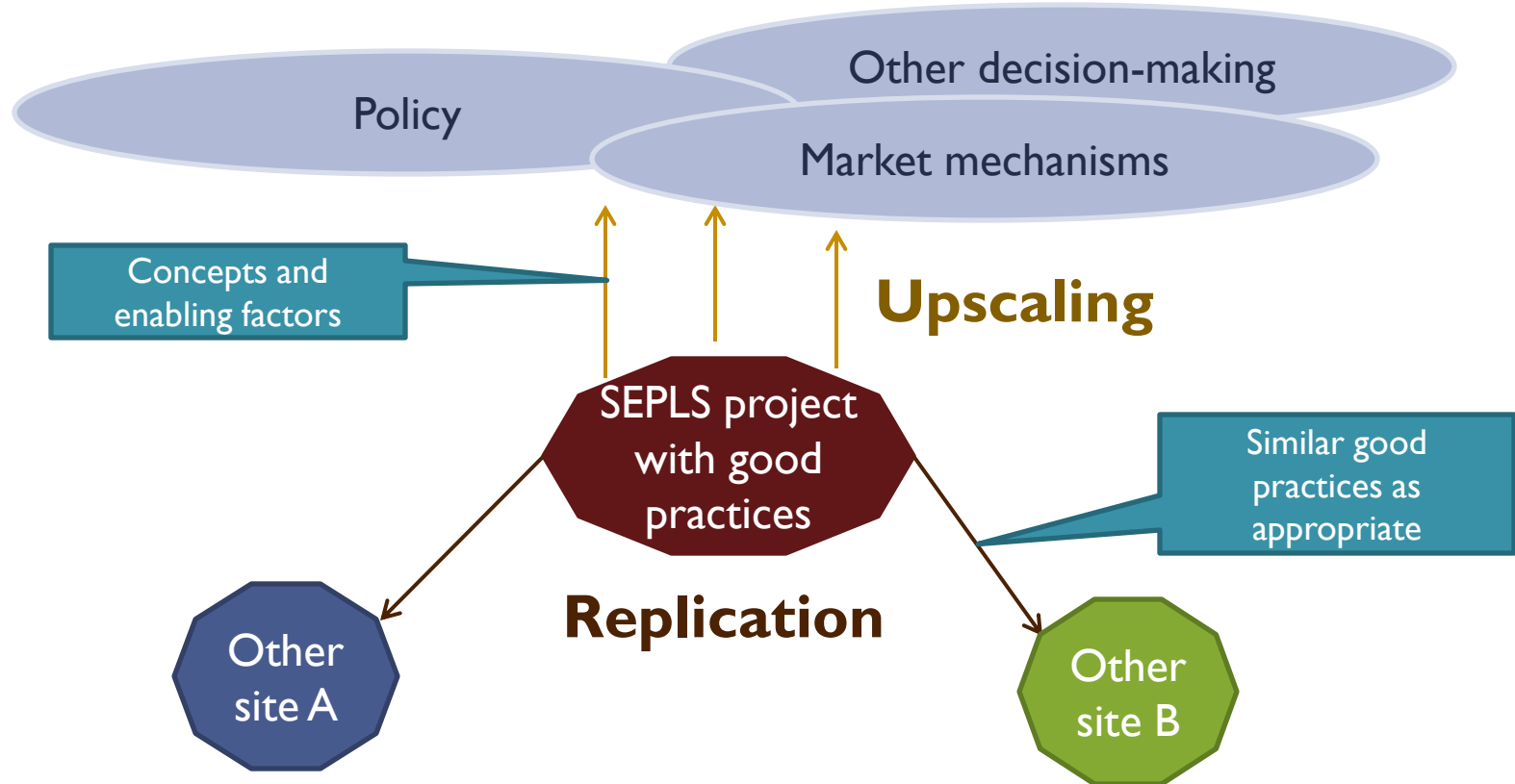
- Theme: “Mainstreaming concepts and approaches of SEPLS into policy and decision-making


- “Mainstreaming” as:

- Up-scaling
- Replication



- **Upscaling** by incorporating concepts into policy, market mechanisms and other decision-making processes
- **Replication** of approaches in other sites as appropriate



- 
- Elements of this workshop:
 - Presentations: To provide insight and examples of mainstreaming concepts and practices
 - Working group discussions: To extract essence and recommendations from participants' presentations and experiences
 - Plenary discussion: To gain shared understanding and lessons learned

Workshop Process

Opening Plenary presentations and panel discussion

Gain understanding of mainstreaming concepts and processes



Working Group presentations

Present cases of mainstreaming activities



Working Group discussions

Extract essence and lessons from presented cases



Closing Plenary

Work toward shared lessons learned and recommendations



Post-Workshop

Synthesize lessons learned and recommendations

Produce report and outcome document(s)

Next: panel presentations and discussion

Please enjoy the workshop!



SATOYAMA
INITIATIVE

IPSI's website: satoyama-initiative.org

The activities of the IPSI Secretariat are made possible through the financial contribution of the Ministry of the Environment, Government of Japan



Ministry of the Environment
Government of Japan