



GEF-Satoyama
Project



GEF-SATOYAMA PROJECT

December 8, 2016
CBD COP13
Cancun, Mexico

CONSERVATION
INTERNATIONAL



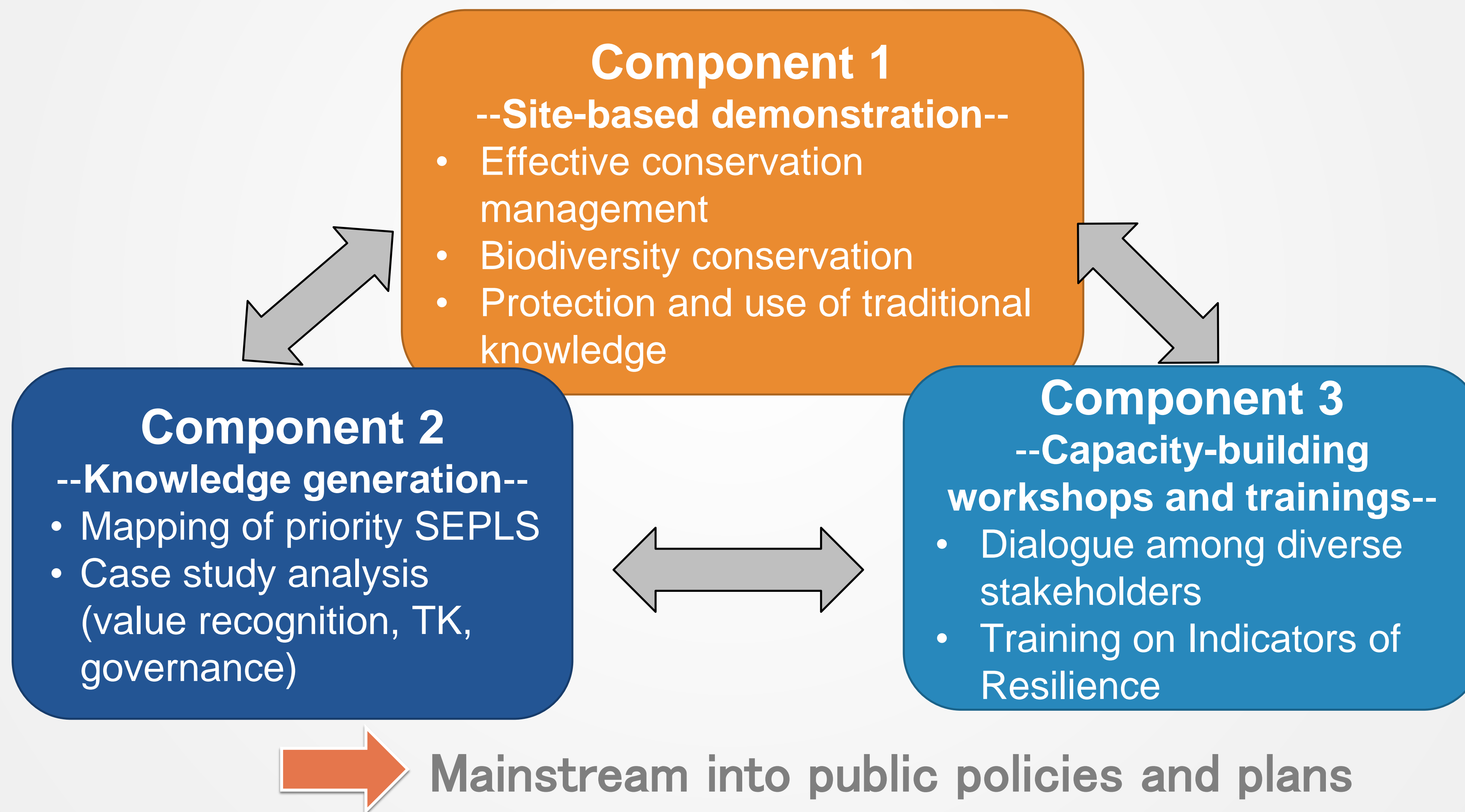
GEF-SATOYAMA PROJECT

Mainstreaming biodiversity conservation and sustainable management in priority Socio-ecological Production Landscapes and Seascapes

- **Project Vision:** Society in harmony with nature, with sustainable primary production sector based on traditional and modern wisdom, and making significant contributions to global targets for conservation of biological diversity
- **Project Objective:** To mainstream conservation and sustainable use of biodiversity and ecosystem services, while improving human well-being in priority Socio-Ecological Production Landscapes and Seascapes



PROJECT COMPONENT



AICHI BIODIVERSITY TARGETS

The Project is relevant and contribute to the achievement of:

ABT 5: Reducing habitat loss

ABT 7: Sustainably managed agriculture, aquaculture and forestry

ABT 11: Protected areas; effective management and connectivity

ABT 12: Prevention of species extinction

ABT 14: Ecosystem restoration

ABT 15: Ecosystem resilience and carbon stocks for CC mitigation and adaptation

ABT 18: Traditional knowledge

ABT 19: Knowledge and science base

ABT 20: Resource mobilization



INSTITUTIONAL ARRANGEMENT


 USD1.909M

CI-GEF Project Agency

 3:1 co-financing

Executive Team

CONSERVATION INTERNATIONAL 
 Japan

 **UNITED NATIONS UNIVERSITY**
UNU-IAS
 Institute for the Advanced Study of Sustainability

IGES
 Institute for Global Environmental Strategies

Advisors & Experts

Site-based Demonstration

  
 Komori ya leo na meso

   
 Fundación para la Investigación y Desarrollo Social
 Amazónicos por la Amazonía

Knowledge generation

- Subgrant project proponents
- Data holders

Capacity building

 **Convention on Biological Diversity**



10 SITE-BASED PROJECTS

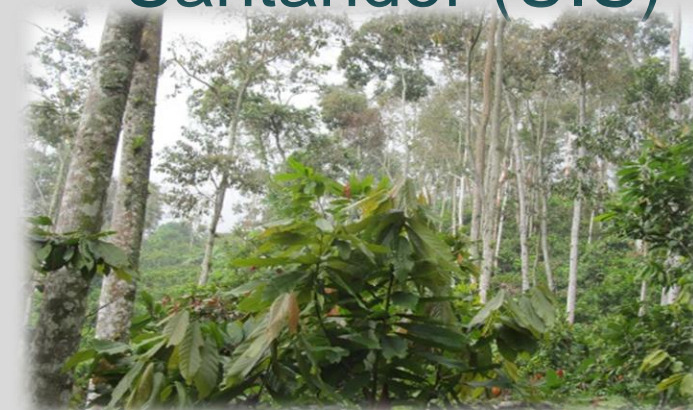


The Energy and Resources Institute (TERI)



Inter Mountain Peoples' Education and Culture in Thailand Association (IMPECT)

Universidad Industrial de Santander (UIS)



Fauna & Flora International (FFI)



Green Island Foundation (GIF)



Wildlife Conservation Society (WCS)



Environnemental Protection & Conservation Organisation (EPCO)

Fundación para la Investigación y Desarrollo Social (FIDES)



Asociación Amazónicas por la Amazonía (AMPA)



Dahari

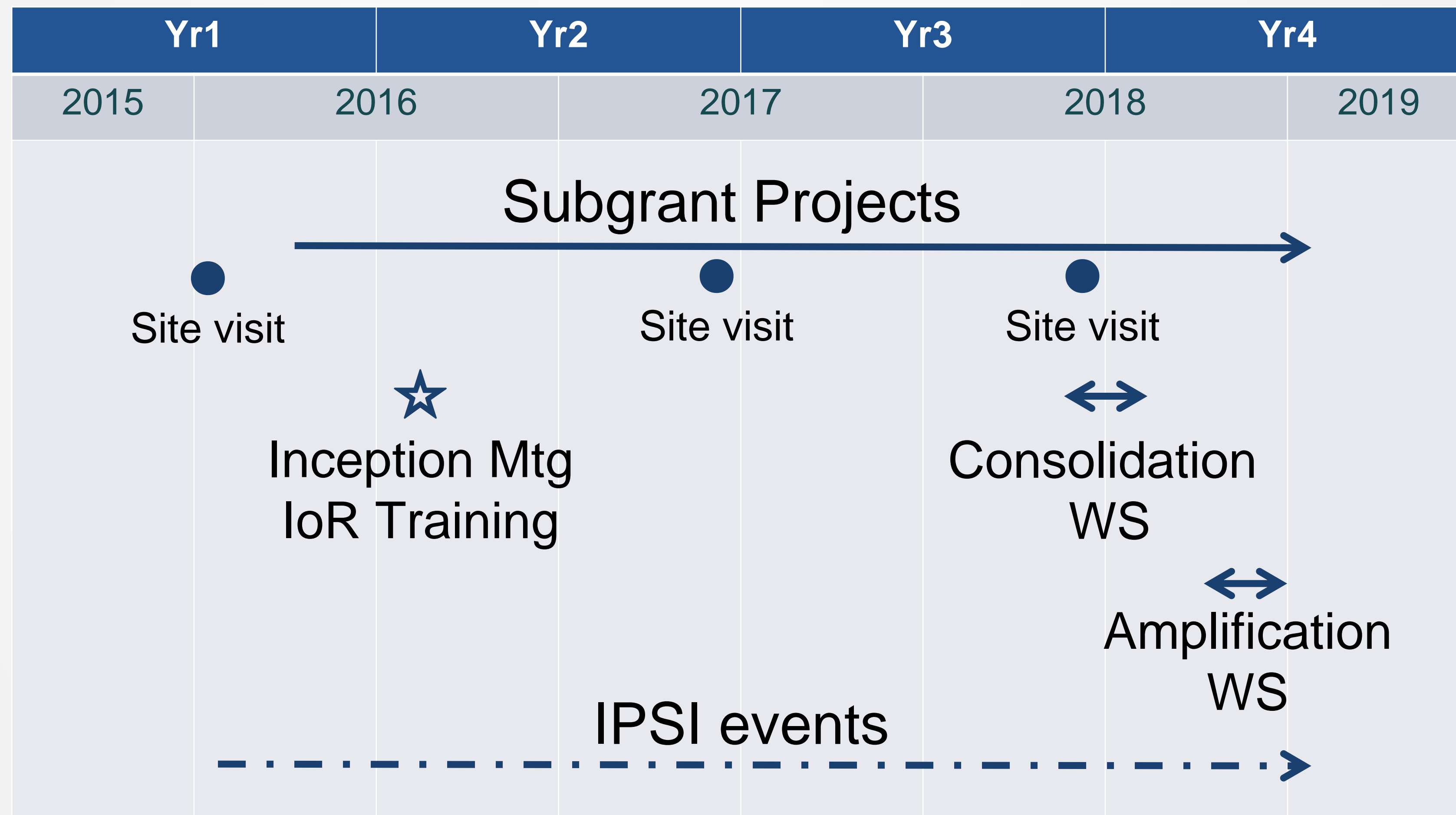


CALL FOR PROPOSALS

- Indo-Burma: 63 proposals
- Madagascar and Indian Ocean Islands: 29 proposals
- Tropical Andes: 38 proposals



PROJECT SCHEDULE



SUSTAINABLE DEVELOPMENT GOALS (SDGs)



 Specifically addressed

 Indirectly addressed



GEF-Satoyama Project

http://gef-satoyama.net/



HOME

PROJECT COMPONENTS

SUBGRANT PROJECTS

RESOURCES

GEF-Satoyama Project

Mainstreaming Biodiversity Conservation and Sustainable Management in Priority Socio-ecological Production Landscapes and Seascapes

"GEF-Satoyama Project" aims to achieve societies in harmony with nature, with sustainable primary production sector based on traditional and modern wisdom, and making significant contributions to global targets for conservation of biological diversity.

While protecting pristine natural areas and other high conservation value areas continue to be important, global conservation of biodiversity will not be achieved without the sustainable management of areas in which people and nature interact. Production landscapes and seascapes refer to the space in which primary industry activities (agriculture, forestry and fisheries) take place in general. Among the production landscapes and seascapes, those that integrate the values of biodiversity and social aspects harmoniously with production activities, such that production activities support biodiversity and vice versa, are termed the socio-ecological production landscapes and seascapes (SEPLS), the focus of this project. This project intends to address the barriers that SEPLS faces globally, such as insufficient recognition of their values and dynamic nature and weak governance, and contribute to the achievement of multiple Aichi Biodiversity Targets and Sustainable Development Goals.

The GEF-Satoyama Project is funded by the Global Environment Facility (GEF), implemented by Conservation International's CI-GEF Project Agency and executed by Conservation International Japan in cooperation with the United Nations University Institute for the Advanced Study of Sustainability (UNU-IAS, the Secretariat of the International Partnership for the Satoyama Initiative) and Institute for Global Environmental Strategies (IGES).

NEWS

- 2016.09.07 [Indicators of Resilience Training in Tropical Andes Biodiversity Hotspot](#)
- 2016.09.02 [Indicators of Resilience training at IUCN World Conservation Congress](#)
- 2016.08.19 [Indicators of Resilience Training in Madagascar and Indian Ocean Islands Biodiversity Hotspot](#)

▲ Archives

▲ PageTop



© 2016 Conservation International

[ABOUT US](#) | [CONTACT](#) | [PRIVACY POLICY](#) | [TERMS OF USE](#)



GEF-Satoyama Project

BEYOND THE PROJECT

- Successful cases and knowledge products that others can follow
- Scaling up at local and global levels
- Stimulating the mobilization of resources to SEPLS





Thank you!

ynatori@conservation.org

