

Contributions of funding mechanisms under the Satoyama Initiative to mainstreaming biodiversity for well-being



SATOYAMA
INITIATIVE



UNITED NATIONS
UNIVERSITY

UNU-IAS

Institute for the Advanced Study
of Sustainability



CONSERVATION
INTERNATIONAL



GLOBAL ENVIRONMENT FACILITY
INVESTING IN OUR PLANET



UNITED NATIONS
UNIVERSITY

UNU-IAS

Institute for the Advanced Study
of Sustainability



SATOYAMA
INITIATIVE

Introduction

Naoya Tsukamoto

United Nations University Institute for the Advanced Study of Sustainability



- A global effort to realize “societies in harmony with nature”
- Promotes revitalization & sustainable management of “Socio-Ecological Production Landscapes and Seascapes” (SEPLS) around the world
- SEPLS: **dynamic mosaics** of habitats and land- & sea-uses shaped by the interactions between people and nature in ways that **maintain biodiversity** and provide humans with **goods and services** needed for their well-being in a sustainable manner



International Partnership for the Satoyama Initiative

I P S I



A global network to facilitate and accelerate the implementation of activities under the Satoyama Initiative

- consists of diverse organizations (over 200 members)
- provides a comprehensive platform for networking and collaboration

What are the functions of IPSI?

Organizing Events



Global Conference



Regional Workshops



Side events at related conferences



Others

Information Platform



- To collect and disseminate information from IPSI members globally through the IPSI website (www.satoyama-initiative.org)
- Information can be useful for research, policymaking, publications, etc.

Collaborative Activities

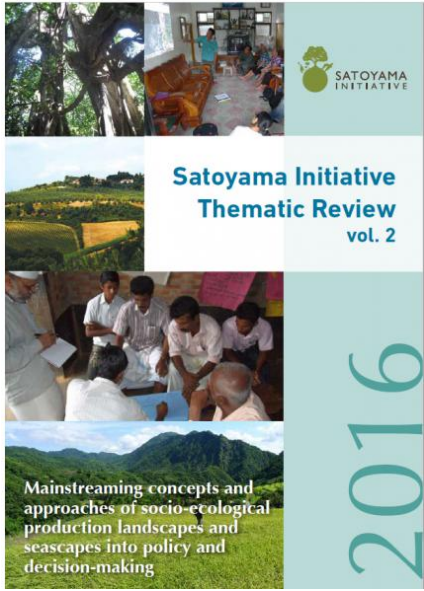


- To strengthen collaboration and synergy among IPSI member organizations

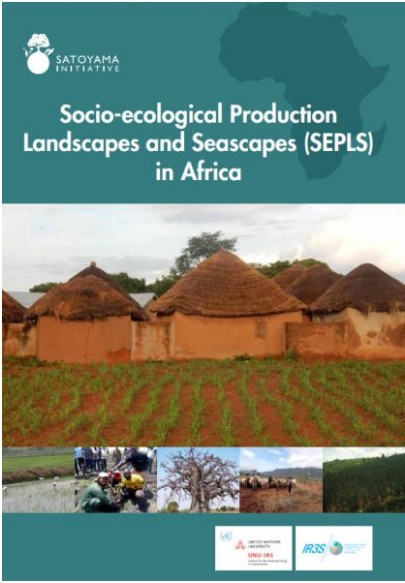
Recent and upcoming IPSI-related events

Date	Event
12-14 January 2016	Sixth IPSI Global Conference (IPSI-6) 10 (Siem Reap, Cambodia)
25 April - 7 May 2016	CBD SBSTTA-20 and SBI-1 (Montreal, Canada)
25-27 May 2016	IPSI Case Study Workshop (Tokyo, Japan)
27-29 June 2016	Satoyama Initiative Regional Workshop in Peru (Cusco and Pisac, Peru)
12-13 July 2016	ISAP 2016 (Yokohama, Japan)
1-10 September 2016	IUCN World Conservation Congress (Honolulu, USA)
4-17 December 2016	CBD COP 13 (Cancun, Mexico)
23-27 January 2017	COMDEKS Global Knowledge Exchange Workshop (San Jose, Costa Rica)
7-10 March 2017	IPBES-5 (Bonn, Germany)
April 2017	Satoyama Initiative Regional Workshop for Asia (Sabah, Malaysia)
July 2017	ISAP 2017 (Yokohama, Japan) (TBC)
Summer/Fall 2017	Satoyama Initiative Regional Workshop and SC-12 (TBD)
2018	IPSI-7 and SC-13 (TBD)

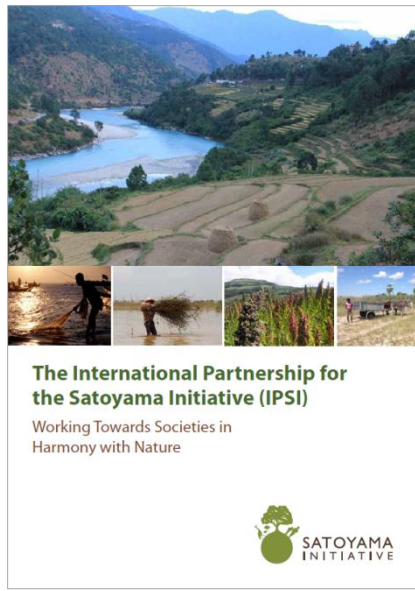
Recent IPSI related publication



Satoyama Initiative Thematic Review Vol. 2(2016)



SEPLS in Africa (2016)



IPSI Booklet (2016)



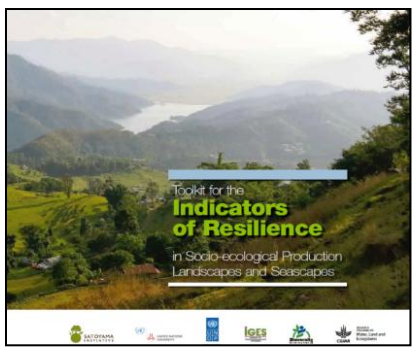
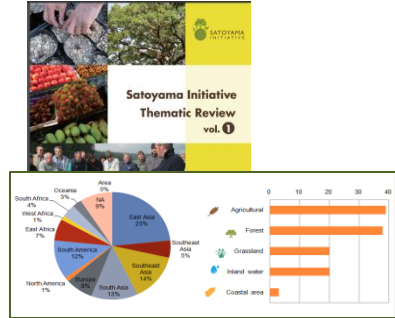
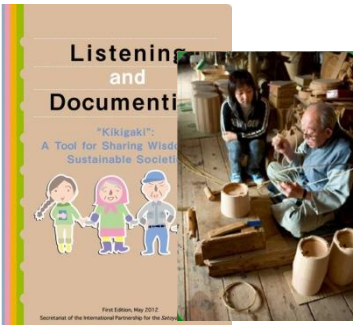
Knowledge-Action linkage Issue Brief (2016)

IPSI Collaborative Activities

- Projects that are carried out cooperatively by multiple IPSI member organizations
- 40 Collaborative Activities endorsed, with diverse types of activity



e.g.



Research

Indicator development



Networking projects



On-the ground projects



Funding projects



Contributions of funding mechanisms under the Satoyama Initiative to mainstreaming biodiversity for well-being

- Mainstreaming biodiversity at the landscape level requires integration and coordination from local to regional and global levels.
- Funding provided to local projects should be aligned with policy priorities to maximize its on-the-ground effectiveness and contribute to the base of knowledge useful at larger scales.
- Several models of funding mechanisms have been established as IPSI collaborative activities from seed funding for promising local projects to combining GEF financing for site-based activities with the production and management of knowledge at a global scale.

This side event

- How can funding mechanisms effectively contribute toward mainstreaming biodiversity through supporting actions for sustainable management of production landscapes and seascapes?

1 The latest GEF analysis on mainstreaming portfolio in relation to SEPLS

Ms. Yoko Watanabe (Global Environmental Facility)

2 *IPSI Collaborative Activity 1: GEF-Satoyama Project*

Dr. Yoji Natori (Conservation International)

3 *IPSI Collaborative Activity 2: COMDEKS Project*

Mr. William Dunbar (UNU-IAS)

4 *IPSI Collaborative Activity 3: SDM Project*

Mr. Yohsuke Amano (UNU-IAS)

5 Panel discussion:

Moderator: Prof. Alfred Oteng-Yeboah (University of Ghana, Ghana National Biodiversity Committee)