

CBD SBI-I Side Event:

Strategic actions to enhance implementation of the CBD: recent experiences of the International Partnership for the Satoyama Initiative in Africa and Asia

Tuesday, 3 May 2016 13:15

Room 7a, 3rd Floor, ICAO Headquarters, Montreal



**UNITED NATIONS
UNIVERSITY**

UNU-IAS

Institute for the Advanced Study
of Sustainability



Ministry of the Environment
Government of Japan

IGES

Institute for Global
Environmental Strategies



**SATOYAMA
INITIATIVE**

Introduction to the Satoyama Initiative and recent developments

William Dunbar

United Nations University Institute for the Advanced Study of Sustainability



UNITED NATIONS
UNIVERSITY

UNU-IAS

Institute for the Advanced Study
of Sustainability



SATOYAMA
INITIATIVE

What is the Satoyama Initiative?

- A global effort to realize “societies in harmony with nature”
- Promotes sustainable resource use and conservation through management of human-influenced landscapes and seascapes



SATOYAMA
INITIATIVE



**SATOYAMA
INITIATIVE**

Vision:

Societies in harmony with nature



Three-fold Approach:

- 1.Consolidate wisdom on securing diverse ecosystem services and values**
- 2.Integrate traditional ecological knowledge and modern science**
- 3.Explore new forms of co-management systems**

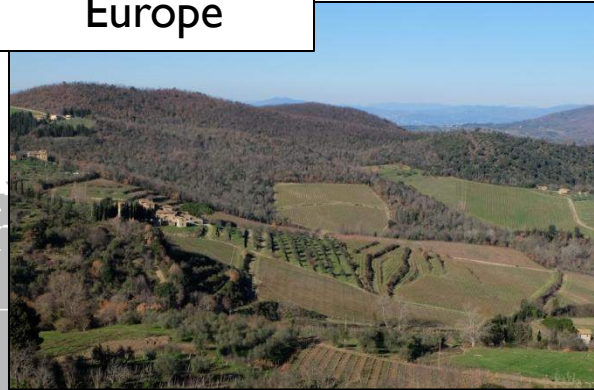
Socio-ecological production landscapes and seascapes (SEPLS)

- Support **biodiversity** while providing humans with the **ecosystem services** needed for their well-being
- **Mutual benefits** between human production and nature
- **Dynamic mosaics** of habitats and land uses
- Deeply linked to **local culture and knowledge**



Socio-ecological production landscapes and seascapes around the world

Europe



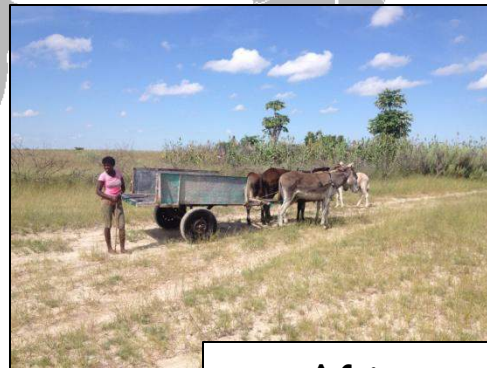
East Asia



The Americas



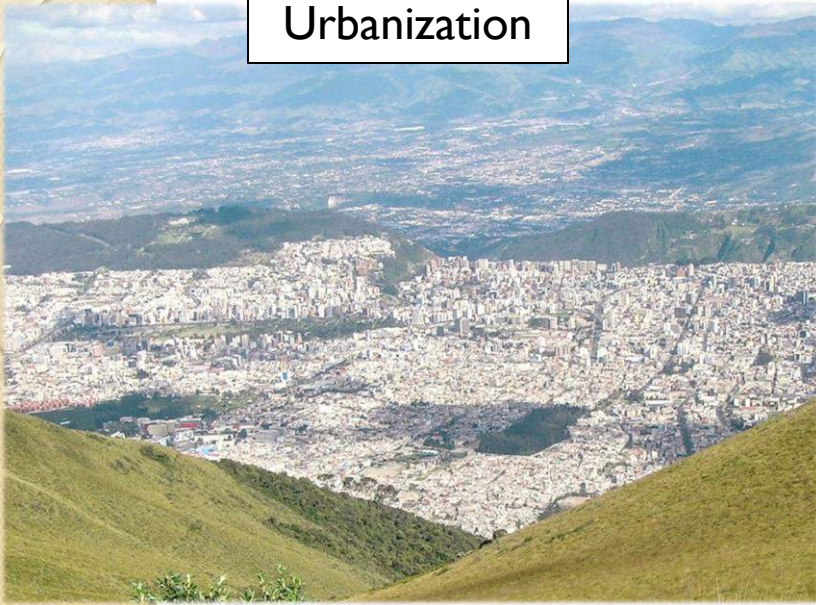
Africa



South Asia



Urbanization



Overexploitation



Threats and Challenges

Industrialized agriculture

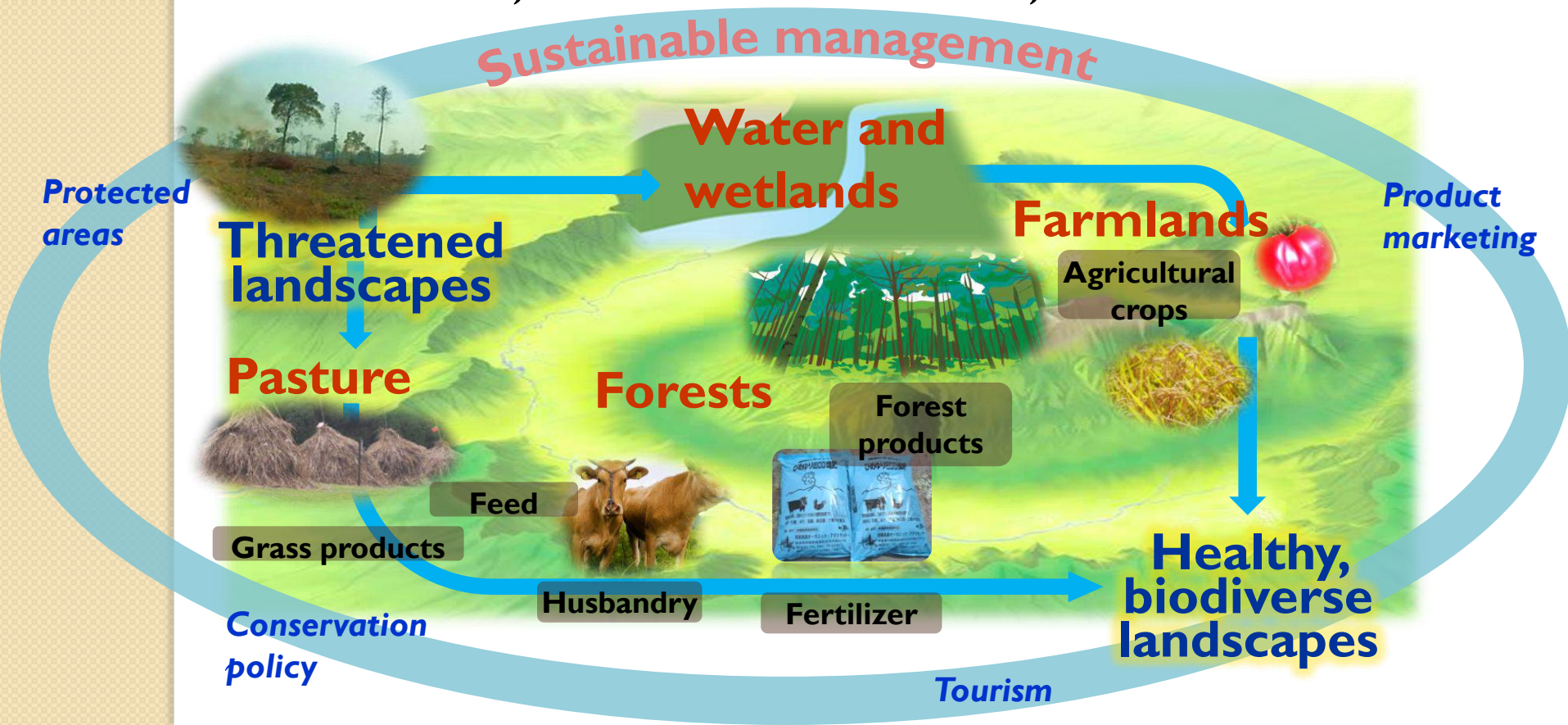


Abandonment



Revitalization and Sustainable Landscape Management

- Holistic landscape/seascape-scale approach
- Multi-faceted, multi-stakeholder, multi-level



Timeline

2006-2010

- Initial research and the “Japan Satoyama Satoumi Assessment”

2009

- Preparatory meetings in Tokyo (July) and Penang (October)

January
2010

- Global Workshop on the Satoyama Initiative in Paris (UNESCO)
 - “The Paris Declaration on the Satoyama Initiative”
 - Calls for creation of an International Partnership

October
2010

- International Partnership for the Satoyama Initiative launched in Nagoya (51 founding members)

The CBD and the Satoyama Initiative



CBD COP10 (Decision X/32)

“Recognises the Satoyama Initiative as a potentially useful tool to better understand and support human-influenced natural environments for the benefit of biodiversity and human well-being”



CBD COP11 (Decision XI/25)

“... recognizes the contribution that the Satoyama Initiative is working to make in creating synergies among the various existing regional and global initiatives on human-influenced natural environment...”

CBD COP12



Decision XII/5.

Biodiversity for poverty eradication and sustainable development

Decision XII/12.

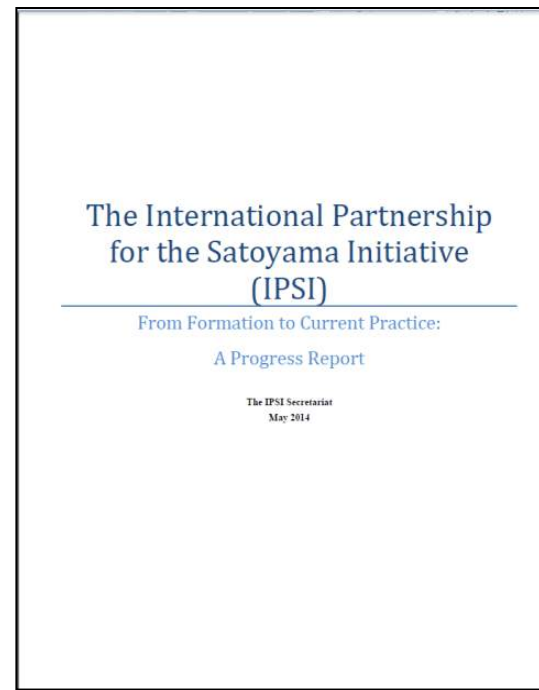
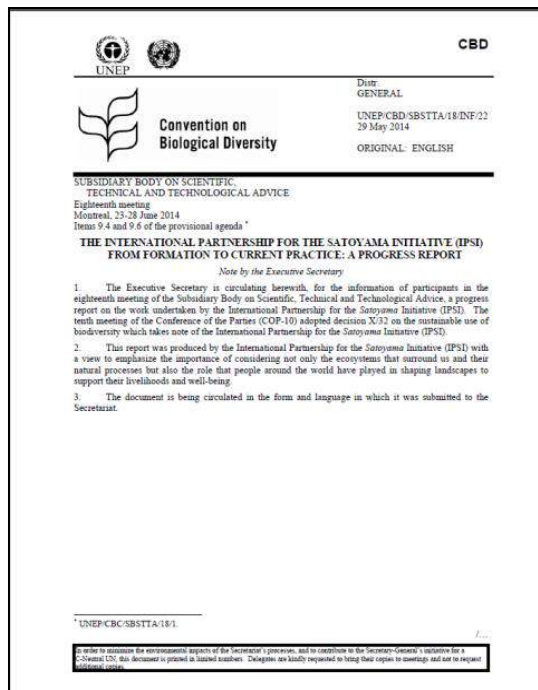
Article 8(j) and related provisions

Decision XII/18

Sustainable use of biodiversity: bushmeat and sustainable wildlife management

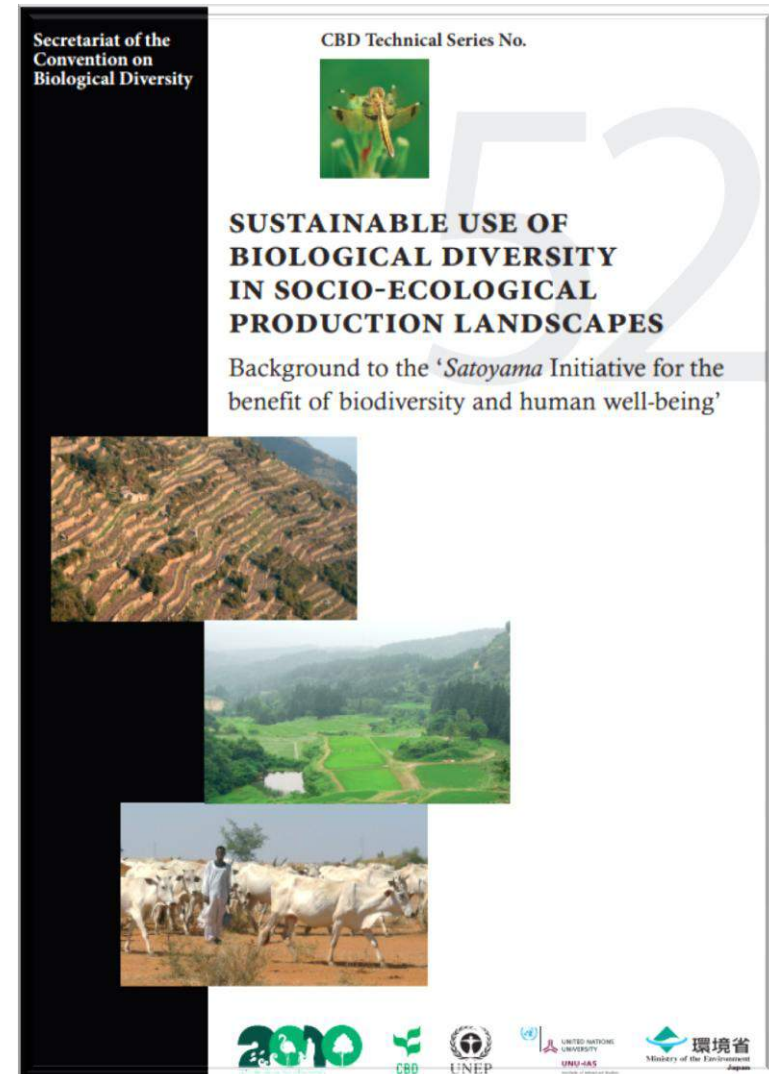
The CBD and the Satoyama Initiative

- The International Partnership for the Satoyama Initiative (IPSI) From Formation to Current Practice: A Progress Report
 - Information document for WGRI-5 and SBSTTA-18



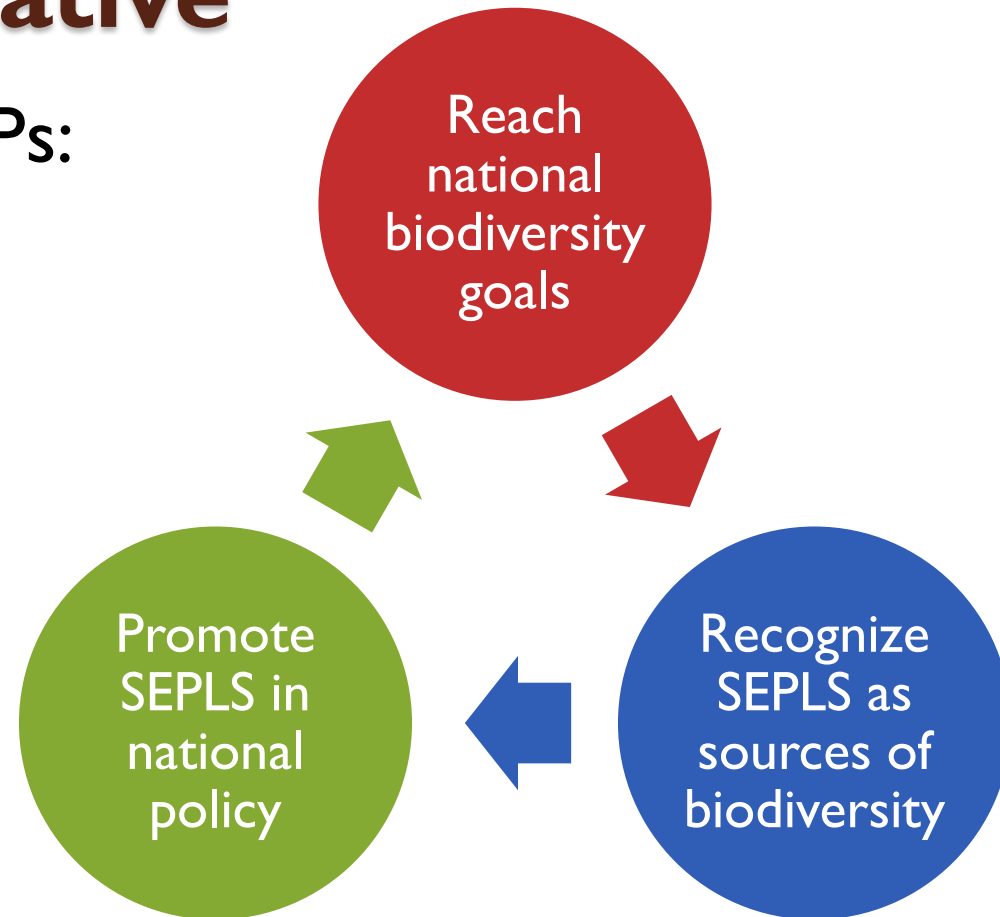
The CBD and the Satoyama Initiative

- CBD Technical Series No. 52
 - Sustainable Use of Biological Diversity in Socio-ecological Production Landscapes: Background to the ‘*Satoyama* Initiative for the benefit of biodiversity and human well-being’



The CBD and the Satoyama Initiative

- NBSAPs:



- Satoyama Initiative concepts are incorporated in NBSAPs of Japan, Nepal, others.

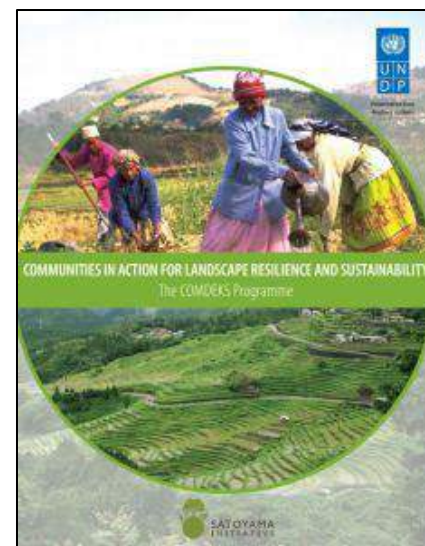
The International Partnership for the Satoyama Initiative (IPSI)

- 184 member organizations (gov't, NGO, private sector, academic, etc.) all over the world
- Promotes networking and collaboration



Resource mobilization / Capacity building

- **Funding:**
- Community Development and Knowledge Management for the Satoyama Initiative (COMDEKS) Programme
 - Small-grant funding in 20 countries

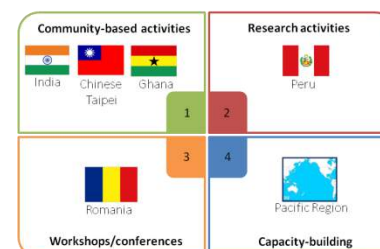


- Satoyama Development Mechanism (SDM)
 - Seed funding to promising projects (up to USD 10,000)

2013



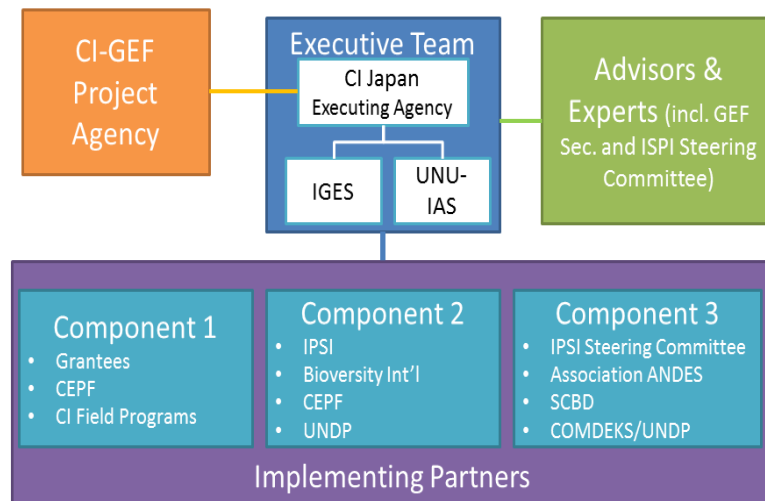
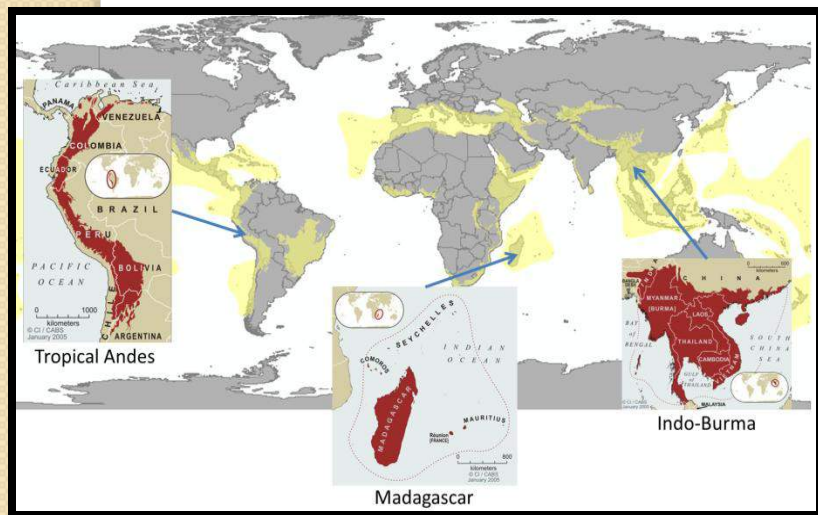
2014



Resource mobilization / Capacity building

- **GEF-Satoyama Project**

- Building on and upscaling earlier efforts under Satoyama Initiative
- Use of “Indicators of Resilience”, IPSI network, events, etc.



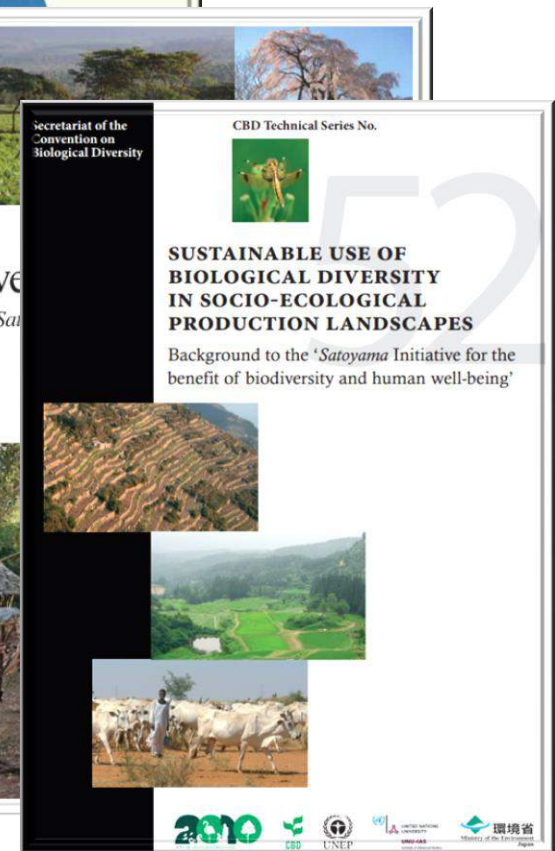
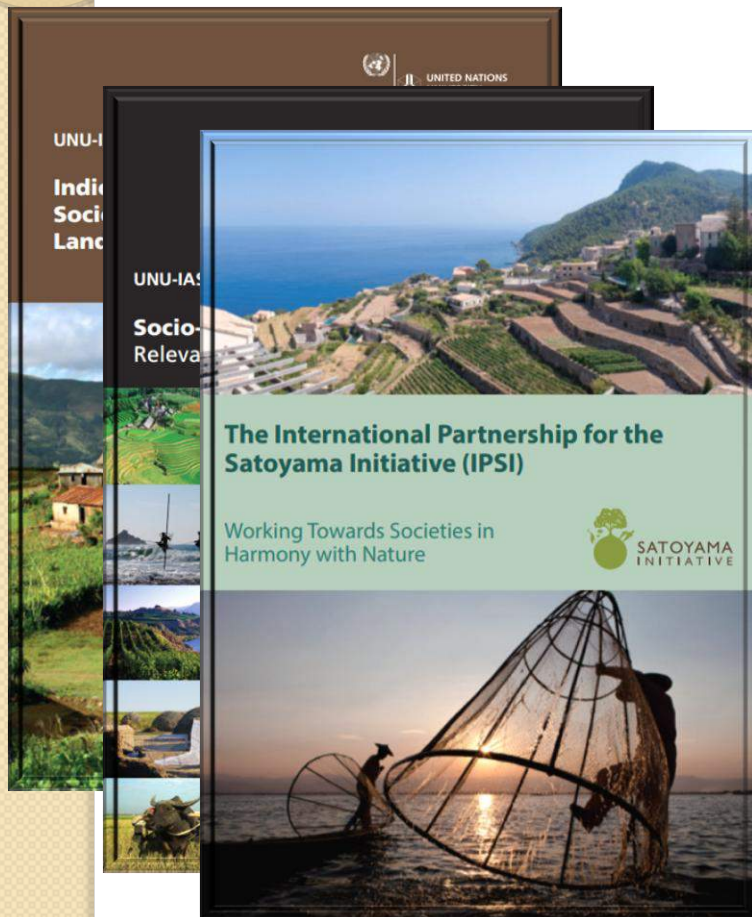
Resource mobilization / Capacity building

- **Events**
 - **IPSI Global Conference**
 - **Regional Workshops**
 - **And many others**



Knowledge facilitation / Policy research

- **Publications**



Knowledge facilitation / Policy research

- **Case Studies collection & analysis**



Generating collective knowledge on the conservation, management and sustainable use of socio-ecological production landscapes and seascapes

- A summary of a review of 80 case studies under the International Partnership for the Satoyama Initiative (IPSI)



IPSI THE INTERNATIONAL PARTNERSHIP FOR THE SATOYAMA INITIATIVE

IPSI, the International Partnership for the Satoyama Initiative, promotes collaboration in the conservation and restoration of sustainable human-influenced natural environments (Socio-Ecological Production Landscapes and Seascapes: SEPLS) through broader global recognition of their value.

HOME ABOUT IPSI **CASE STUDIES** EVENTS ANNOUNCEMENTS

RESOURCES

CASE STUDIES

Google

Categories

- Forest
- Coastal
- Grass
- Agricultural
- In-land Water

Case Studies

- Mainstreaming Biodiversity into the Cocoa Growing Landscape in the Kakum Conservation Area in Ghana**
Ghana (Central Region) Africa
Conservation Alliance
- Recovery of Mouthless Crab (*Cardisoma crassum*) Populations in Mangrove Forests of the Chone River Estuary (Ecuador)**
Ecuador (South America)
Foundation for Research and Social Development (FIDES)

Next Steps: Implementation

- Coordination of on-the-ground activities
- Capacity building through IPSI (e.g. SDM) and others
- Contribution to Aichi Targets through COP, SBI and SBSTTA

Next Steps

- Recognition and promotion of SEPLS approaches in NBSAPs (and LBSAPs)
- Contribution to CBD Implementation
- Coordination on Indicators Research
- Collaboration on publications, policy briefs, etc.
- More CBD parties are invited to join IPSI
- Contribution to SDG processes

Announcement: Publication Coming Soon



SATOYAMA
INITIATIVE



Satoyama Initiative Thematic Review

vol. **2**

“Incorporating concepts and approaches of socio-ecological production landscapes and seascapes (SEPLS) into policy and decision-making”

Case studies, analysis, lessons learned and practical advice for mainstreaming ideas of biodiversity conservation and human well-being into policy processes

2016



**SATOYAMA
INITIATIVE**

Vision:

**Societies in
harmony with
nature**



Three-fold approach:

- **Consolidate wisdom on securing diverse ecosystem services and values**
- **Integrate traditional knowledge and modern science**
- **Explore new forms of co-management systems**

satoiyama-initiative.org