



GEF- Satoyama Project

SBSTTA20
April 26, 2016
13:15-14:45

Yoji Nator
Manager,
Ecosystem F
CI Japan



gef GLOBAL ENVIRONM
INVESTING IN OUR F

GEF-Satoyama Project

streamlining biodiversity conservation and sustainable management in priority Socio-ecological Production Landscapes and Seascapes

Project Vision: Society in harmony with nature, with sustainable primary production sector based on traditional and modern wisdom, and making significant contributions to global targets for conservation of biological diversity

Project Objective: To mainstream conservation and sustainable use of biodiversity and ecosystem services, while improving human well-being in priority Socio-ecological Production Landscapes and Seascapes

SDG 15 Biodiversity Targets

The Project is relevant and contribute to the achievement of:

BT 5: Reducing habitat loss

BT 7: Sustainably managed agriculture, aquaculture and forestry

BT 11: Protected areas; effective management and connectivity

BT 12: Prevention of species extinction

BT 14: Ecosystem restoration

BT 15: Ecosystem resilience and carbon stocks for CC mitigation and adaptation

BT 18: Traditional knowledge

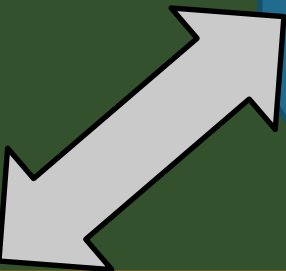
BT 19: Knowledge and science base

BT 20: Resource mobilization

Component 1

--On-the-ground demonstration--

- Effective conservation management
- Biodiversity conservation
- Protection and use of traditional knowledge



Component 2

--Knowledge generation--

- Mapping of priority SEPLS
- Case study analysis (value recognition, TK, governance)

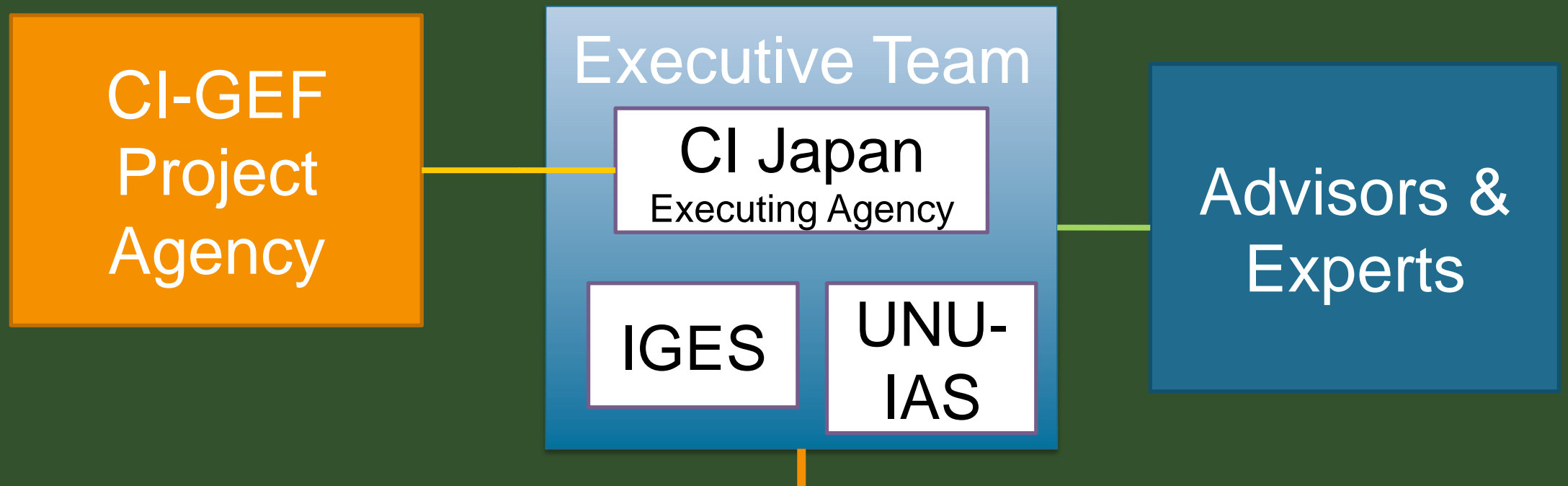


Component 3

--Capacity-building workshops and trainings--

- Dialogue among diverse stakeholders
- Training on Indicators of Resilience

Institutional Arrangement



Component 1

- FFI, IMPECT, TERI
- FIDES, AMPA, UIS
- WCS, Dahari, GIF, EPCO

Component 2

- Subgrant project proponents
 - Data holders

Component 3

- IPSI Sec. and Steering Committee
- Association ANDES
- SCBD
- UNDP and others

Energy and Resources
Institute (TERI)



Inter Mountain
Peoples' Education
and Culture in
Thailand Association
(IMPECT)

Universidad
de Santander



Fauna & Flora
International (FFI)

Island
Foundation

Wildlife Conservation
Society (WCS)

Fundación para la
Investigación y Desarrollo
Social (FIDES)





- Project to produce successful cases and knowledge products that others can follow
- Scaling up at local and global level
- Stimulating the mobilization of resources to SEPLS

ef

Thank you very much



GEF-Satoyama@conservation.org

CONSERVATION

