

# SATOYAMA INITIATIVE AND ZRC SAZU, SLOVENIA



Mateja Šmid Hribar  
mateja.smid@zrc-sazu.si

Mimi Urbanc  
mimi@zrc-sazu.si

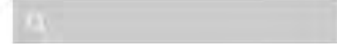
# Presentation structure

1. Who are we?
2. How did we get acquainted with the Satoyama initiative?
3. Why is IPSI interesting for us?
4. How does our first case study look like?
5. What we did to increase knowledge and understanding of SEPLS?
6. How do we foresee future cooperation?

# ZRC SAZU

Research Centre  
of the Slovenian Academy of Sciences and Arts

[ORGANIZATIONAL UNITS](#) • [PROGRAMS AND PROJECTS](#) • [EVENTS](#) • [PUBLICATIONS](#) • [COLLECTIONS](#) • [NEWS](#)



## Anton Melik Geographical Institute



### Addresses

**E-mail:** [gi@zrc-sazu.si](mailto:gi@zrc-sazu.si)  
**Phone:** +386 1 470 63 50  
**Fax:** +386 1 425 77 93  
**Headquarters:** Gosposka ulica 13, Ljubljana  
**Address:** P. P. 306, 1001 Ljubljana

### Sections

[Department of Natural Hazards](#)  
[Department of Physical Geography](#)  
[Department of Geographic Information Systems](#)  
[Department of Regional Geography](#)  
[Department of Human Geography](#)  
[Department of Thematic Cartography](#)  
[Department of Environmental Protection](#)

# ZRC SAZU

Research Centre  
of the Slovenian Academy of Sciences and Arts

## Institutes



Anton Melik Geographical Institute



Centre for interdisciplinary research

slovar -ja m (á) 1. knjiga, v kateri so besede razvrščene po abecedi in pojasnjene; slovar ima sto tisoč besed; izdati, sestavljati slovar; prevajati s slovarji; obsežen slovar / na koncu knjige je slovar seznam s tako razvrščenimi in pojasnjenimi besedami / enotezični, enozvezkovni, narečni.

Fran Ramovš Institute of the Slovenian Language



France Stele Institute of Art History



Institute of Anthropological and Spatial Studies



Institute of Archaeology



Institute of Cultural History



Institute of Ethnomusicology



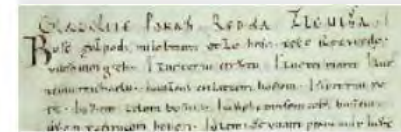
Institute of Musicology



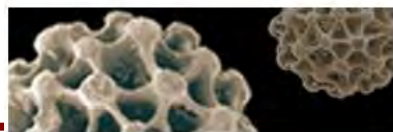
Institute of Philosophy



Institute of Slovenian Ethnology



Institute of Slovenian Literature and Literary Studies



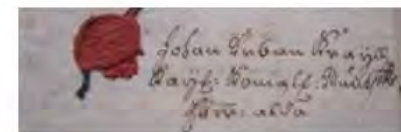
Ivan Rakovec Institute of Palaeontology



Jovan Hadži Institute of Biology

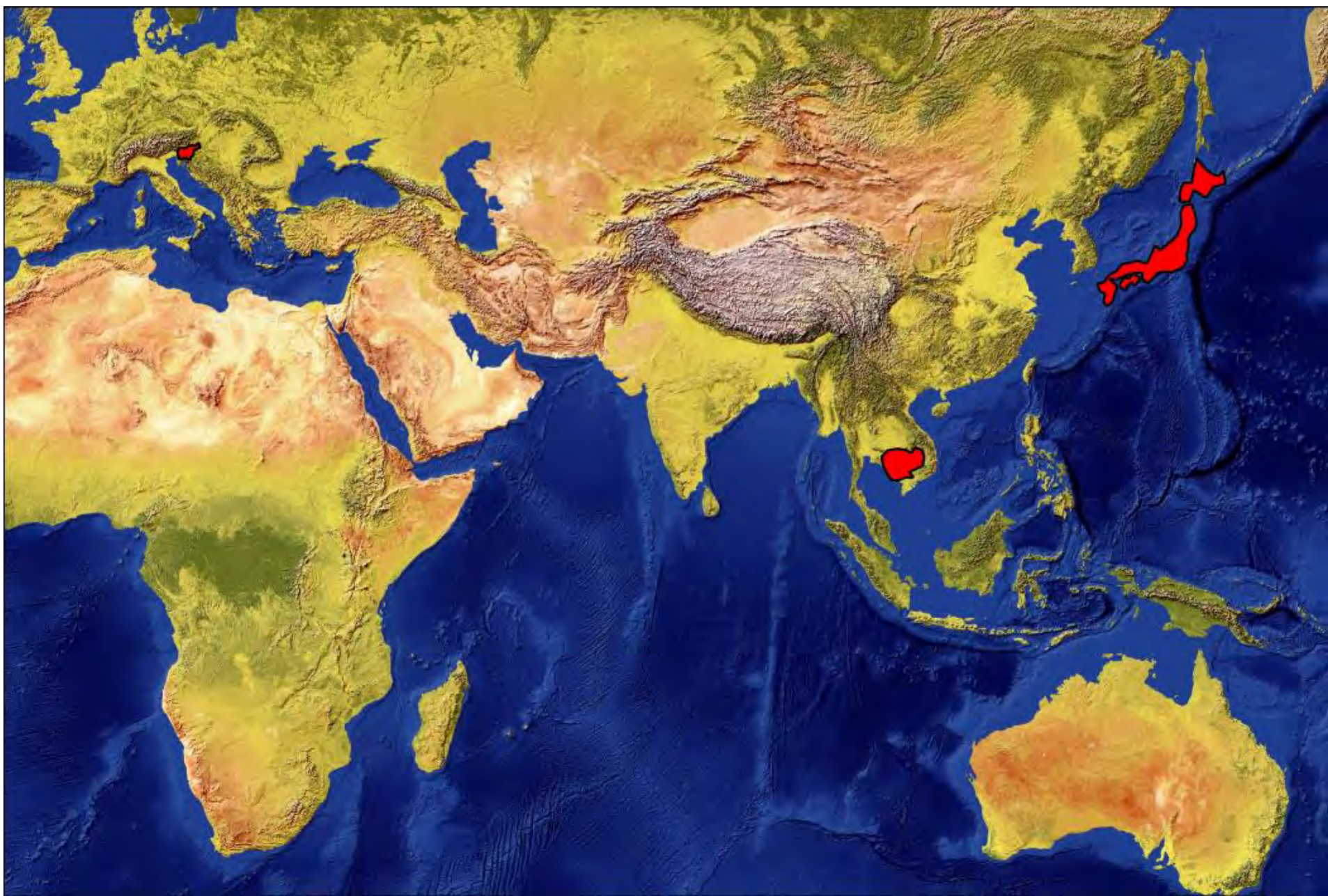


Karst Research Institute



Milko Kos Historical Institute





Siem Reap,  
January, 2016





# How did we get acquainted with IPSI?

1. The paper Bolthouse, J. (2013): End of Tradition, Reworking of Custom: Re-assembling Satoyama Woodlands on Tokyo's Urban Fringe, published in the book *Cultural Severance and the Environment* at Springer
2. Based on this paper we found out the Paris declaration on the "SATOYAMA INITIATIVE", IPSI and the Satoyama Initiative web platform.
3. Later Prof. Agnoletti (met at the 1st European Conference on Linking Biological and Cultural Diversity) connected us to the IPSI representative Mr William Dunbar who helped and guide us through the process of becoming an IPSI member and also to publish our first case study.

# Why is IPSI interesting for us?

- IPSI is in line with our general work in the field of rural landscapes. We are especially interested in knowledge and practices needed for forming of such landscapes.
- Slovenia has faced fast changes of rural landscapes with two pronounced processes: intensification leading to monocultures and secondly land abandonment leading to forest overgrowing.
- We see SEPLS as a common natural source enabling better life quality, locally produced (and better quality) food, connecting people with the second nature, all these leading to better social cohesion and sustainable development.



# How does our first case study look like?

- Velika planina is the largest Slovenian mountain pasture (300 cattle);
- it has been operating for centuries, but actual management and ownerships structure was set up at the beginning of the 20th century;
- it survived the turbulent socialist period (1945–1991): confiscation;
- a good example of a responsible attitude towards common property;
- its environmental and cultural values are at least as important as its economic value.



# Increasing knowledge and understanding

- we have shared information on IPSI at the Anton Melik Geographical Institute and among other institutes in Centre of the Slovenian Academy of Sciences and Arts (ZRC SAZU);
- research work on understanding Slovenian SEPLS – know how behind pilot sites, collecting practices and knowledge linked with individual socio-ecological landscapes;
- preparing a message for two mailing lists: first one is GEOLISTA, a list of Slovenian (mostly) geographers (724 members) and secondly PECSRL mailing list, European rural landscapes community (550 members).

# How do we foresee future cooperation?

- new research work on Slovenian SEPLS;
- new case studies of Slovenian SEPLS listed in the Satoyama initiative platform which will show Slovenian experiences and know-how on socio-ecological landscapes;
- dissemination on IPSI and importance of SEPLS in scientific international publications;
- share information on IPSI at national and international events.

## **Our interest:**

- to cooperate with international IPSI community in preparing a joint paper;
- to cooperate with international IPSI community in joint research/projects; (bio and cultural diversity and ecosystem services of SEPLS, identifying of ecosystem services for inhabitants, empowerment of local community for SEPLS protection);
- to discover new funding schemes for performing research activities.



We are looking forward to cooperating with you.



Thank you for your attention.