



GEF- Satoyama Project

IPSI-6
Siem Reap, Cambodia
January 13, 2016

Yoji Natori
Manager,
Ecosystem Policy
CI Japan



Background

1. Socio-Ecological Production Landscapes and Seascapes (SEPLS): Production landscapes and seascapes that integrate the values of biodiversity and social aspects harmoniously with production activities
2. SEPLS exists throughout the world in different forms
3. SEPLS are increasingly threatened
4. Underlying causes include poverty, rapidly expanding human population, and lack of appreciation of their values

GEF-Satoyama Project

Mainstreaming biodiversity conservation and sustainable management in priority Socio-ecological Production Landscapes and Seascapes

- **Project Vision:** Society in harmony with nature, with sustainable primary production sector based on traditional and modern wisdom, and making significant contributions to global targets for conservation of biological diversity
- **Project Objective:** To mainstream conservation and sustainable use of biodiversity and ecosystem services, while improving human well-being in priority Socio-Ecological Production Landscapes and Seascapes

Aichi Biodiversity Targets

The Project is relevant and contribute to the achievement of:

ABT 5: Reducing habitat loss

ABT 7: Sustainably managed agriculture, aquaculture and forestry

ABT 11: Protected areas; effective management and connectivity

ABT 12: Prevention of species extinction

ABT 14: Ecosystem restoration

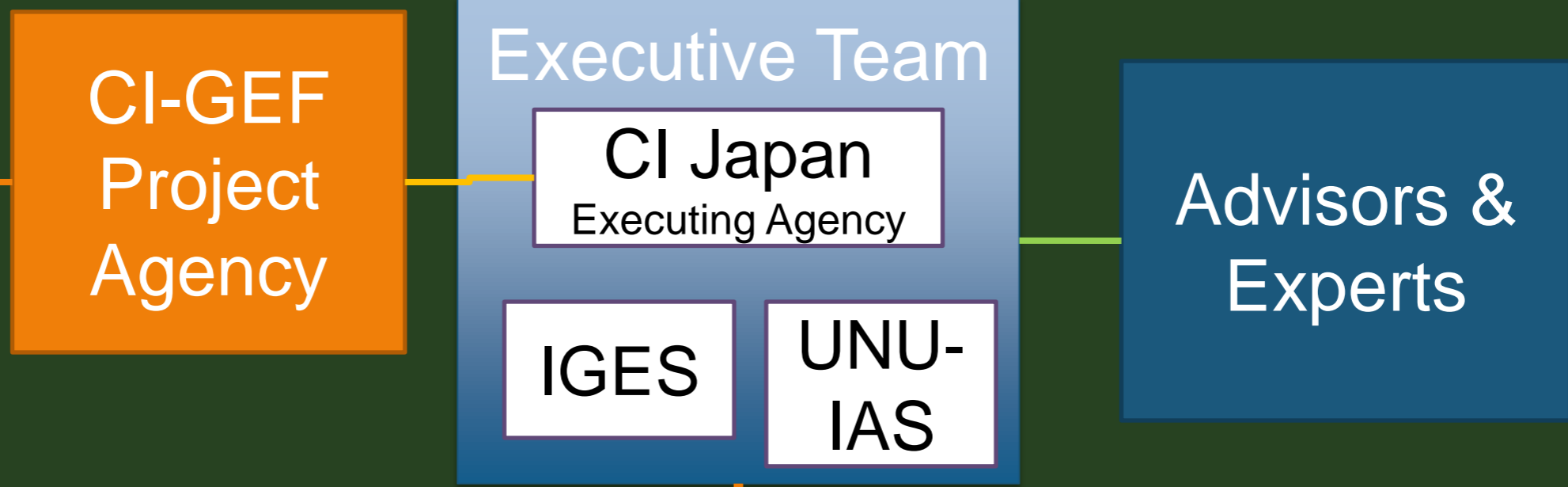
ABT 15: Ecosystem resilience and carbon stocks for CC mitigation and adaptation

ABT 18: Traditional knowledge

ABT 19: Knowledge and science base

ABT 20: Resource mobilization

Institutional Arrangement of the Project



Implementing Partners

Project Components

Component 1

--On-the-ground demonstration--
(3 projects/target geography)

- Effective conservation management
- Biodiversity conservation
- Protection and use of traditional knowledge



Component 2

--Knowledge generation—

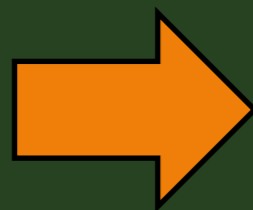
- Mapping of priority SEPLS
- Case study analysis



Component 3

--Capacity-building workshops and trainings—

- Dialogue among diverse stakeholders
- Training on Indicators for Resilience



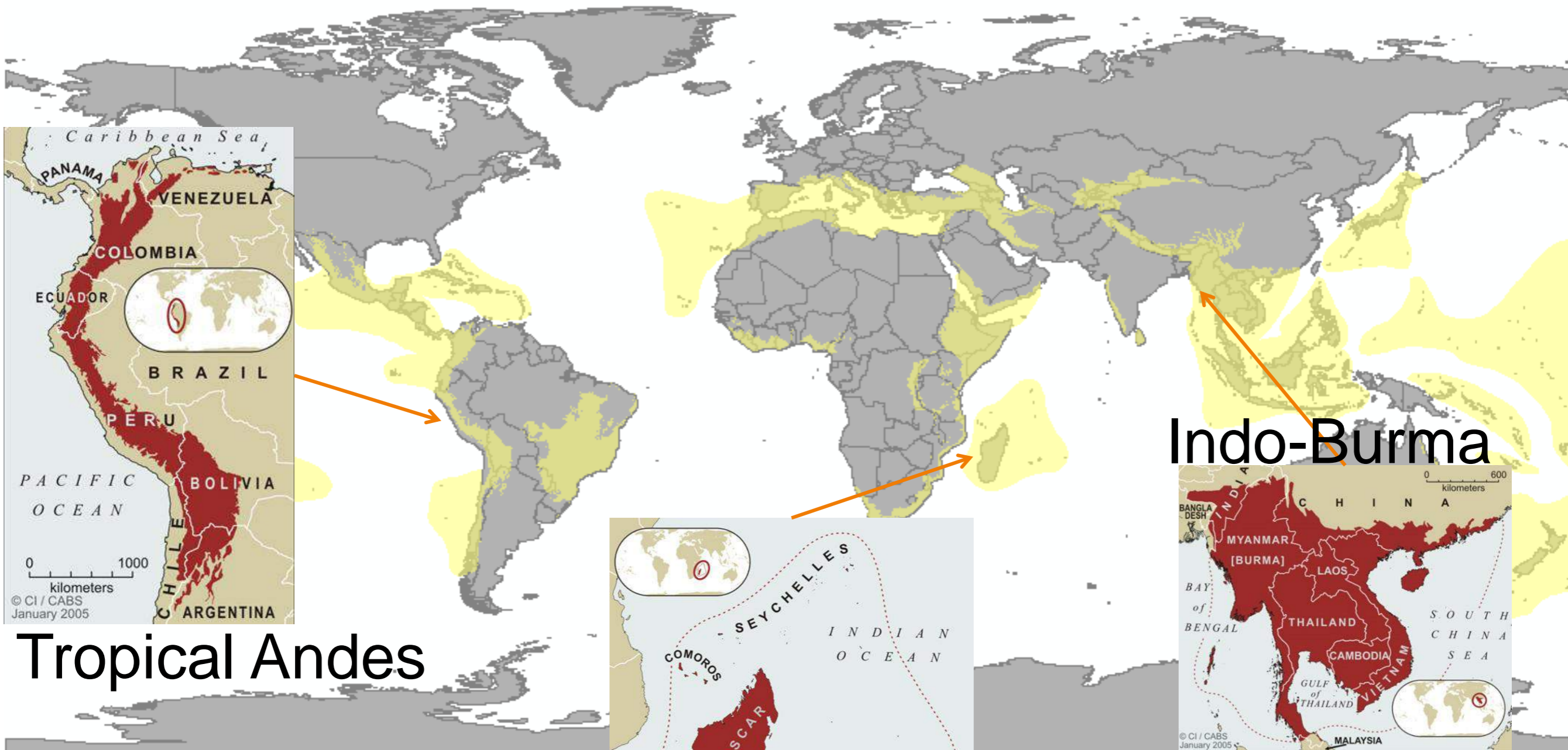
Mainstream into public policies and plans



Partnership

- Through grant making
- Through knowledge production
- Through learning and training

On-the-Ground Partners Sought through Calls for Proposals



Tropical Andes



Madagascar
and the Indian Ocean Islands

Indo-Burma



Expected Outcomes

Overall
Society in harmony with nature

Component 1

- Improved conservation management of >60,000ha.
- >20 threatened species protected
- Traditional knowledge documented and used in policies and plans

Component 2

- Knowledge product produced and used (maps, value recognition, TK, governance)

Component 3

- Increased and more global recognition of SEPLS
- Policies at various levels influenced
- Gender mainstreaming

Amplification arm of the project

Beyond the Project

- Project to produce successful cases and knowledge products that others can follow
- Scaling up at local and global level
- Stimulating the mobilization of resources to SEPLS



IPSI PoA Strategic Objective 4

Priority Actions

- **Finance SEPLS-related activities**

Directly: Grants; Indirectly:
raised awareness

- **SEPLS concept into key policy programmes and plans**

- **Increase awareness of policy and decision-makers on SEPLS**

Knowledge
products, training

- **Strengthen the institutional capacity of the IPSI Secretariat....**

Partnership

- **Organize capacity building activities ... to develop human and institutional capacities of IPSI members and other stakeholders, to formulate and implement relevant initiatives, and to generate and mobilize necessary financial resources**

Component 3



Thank you very much!

ynatori@conservation.or.jp
<http://www.gef-satoyama.net>

CONSERVATION
INTERNATIONAL

