



Laikipia Wildlife Forum

CONSERVATION IN ACTION

Improving natural resource management and biodiversity conservation in Laikipia County, Kenya

Satoyama Initiative Regional Workshop August 2015 Accra, Ghana
Josephat Musyima



Laikipia Wildlife Forum

CONSERVATION IN ACTION

Membership Organization

- Laikipia Wildlife Forum (LWF) is a community based membership organisation. Our membership is diverse membership - large scale ranches, pastoralist communities, tourism operators, small scale farmers, community based natural resource management organisations, conservation and development organisations, and individuals.
- LWF connects people and enables mobilisation of local commitment and resources to resolve common or collective conservation, environmental and linked livelihood challenges or problems.



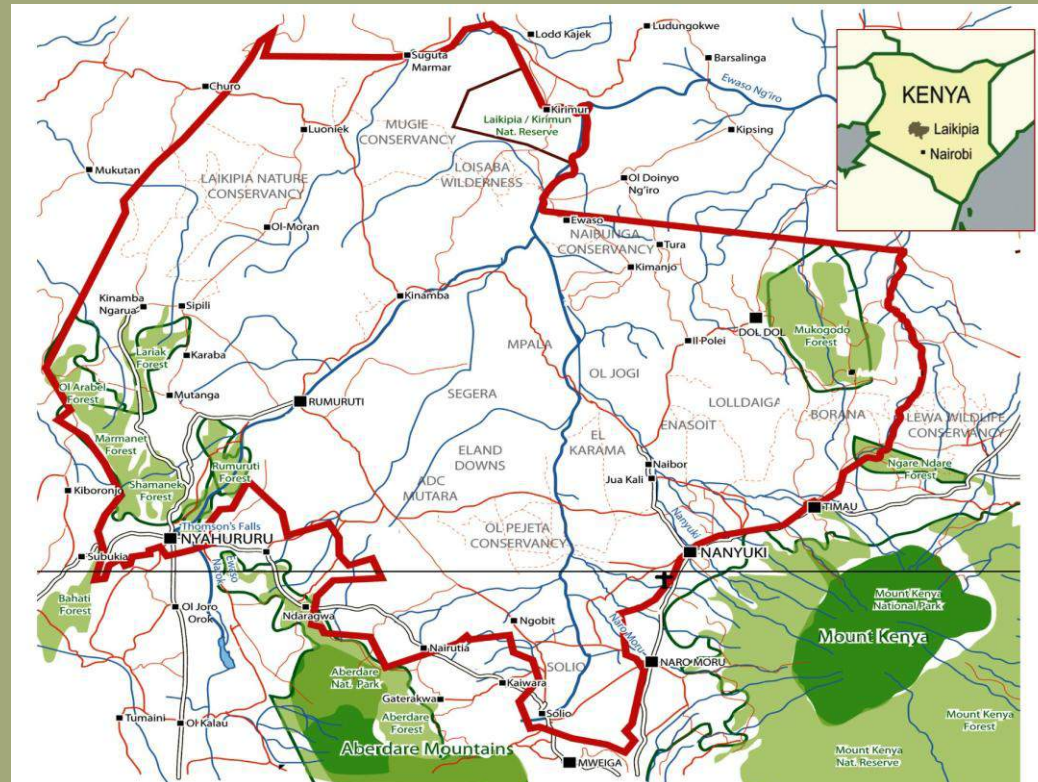
Vision and Mission

- **Vision:** To provide a healthy and productive environment for people and wildlife, in a supportive policy environment accepted and understood in the wider community with optimum economic and sustainable productivity of land and other natural resources, widely and appropriately distributed in a peaceful context
- **Mission:** Conserving the integrity of the Ewaso Ecosystem, by creatively managing the natural resources to improve the livelihoods of its people



Where We Work

- LWF work area stretches over an area of 10,000km² to the lower slopes of Mt Kenya and the Aberdare mountain range, north across the extensive Laikipia plateau to the arid lands of Samburu County
- Work area includes areas of critical ecosystem importance on the higher lands and the upper Ewaso Ngiro river system



Activity

- **Goal** of increasing the capacity of the people of Laikipia to manage their natural resources including rangelands, forests and water.
- 3 core programme areas:
 - Rangelands Management
 - Participatory Forest Management
 - Water Resources Management
- The programmes are inter-related and various activities implemented in each of them



Rangelands Management

- Aims at enabling LWF members and Laikipia's communities to restore their land productivity in the rangelands through better decision-making in relation to the management, use and production of primary natural resources - as a means to improve livelihoods and maintaining biodiversity
- Activities include development of rangeland management strategy; training framework for Holistic Management (HM); capacity enhancement of communities on HM; development of extension services; development of learning sites; exchange visits for experience sharing and learning



Participatory Forest Management

- To enable LWF members and Laikipia's communities to maintain and or restore forest health and productivity in Laikipia - management and restoration of forests in a human and wildlife occupied landscape
- Activities include support for creation and strengthening of CFAs to enable effective implementation of Participatory Forest Management (PFM)- development of PFMP, formation of CFAs network
- Raising awareness and providing training to community leaders & members in order for forest users to be aware of their rights & obligations with regards to forest use & management as provided for by the Forest Act



Water Resources Management

- Supports its members to improve Laikipia's rivers, wetlands and riparian land management in order to increase water availability and quality - household consumption, environmental health and ecosystem functioning
- This is through support to, and the strengthening of, community based Water Resource User Associations (WRUAs) – capacity enhancement, development and implementation of Sub Catchment Management Plans (SCMPs)



Achievements So Far

- Enhanced Capacity of;
 - 10 CFAs
 - 23 WRUAs
 - 13 communal group ranchesto sustainably exploit, conserve and manage natural resources



Results

- Improved perception among communities towards natural resources conservation and management through exploitation of NR for economic, social and environmental gain
- Increased ability of natural resources users to collaborate, plan and implement collective actions for improved NRM – through improves linkages and capacity enhancement
- Improved quality and diversity of natural resources for Laikipia communities



Results Continued

- Expanded and diversified economic opportunities for Laikipia communities for improved and sustainable management and conservation of biodiversity
- Empowered NR users to influence and promote good governance and accountability for better approach towards conservation and NRM on a sustainable basis
- Development of ecological and socioeconomic monitoring programme to track change in ecosystem health and human wellbeing in relation to land use and NRM



Challenges and Lessons Learnt

- Progress has been made. However, building capacities of local communities to sustainably utilize environmental resources in a way that optimizes the envisaged gains and supports economic development with minimal undesirable environmental effects is still wanting



Next Steps

- Need to build on and scale up the initiatives started for greater impact



For more information visit our website:

www.laikipia.org

Email:

communications@laikipia.org

