



MAINSTREAMING BIODIVERSITY CONSERVATION IN COCOA PRODUCTION LANDSCAPES



**Presented by
Ernestina Osei-Peprah (Mrs.)
Conservation Alliance**



BACKGROUND

- Cocoa production is a major economic activity among fringe communities within protected areas in Ghana
- Cocoa production accounts for significant loss of biodiversity within agricultural landscapes.
- Cocoa production presents opportunity for biodiversity conservation.
- Conservation Alliance supported the farmer group, **Conservation Cocoa Association** established in 2007, to promote the adoption of sustainable cocoa production.
- Program which commenced with 4 communities now covers 165 communities with membership of over 2,200 farmers in Kakum, Bia and Ankasa Conservation Areas.



OBJECTIVES

The objectives of the program are the promotion of:

- Good farming practices to enable farmers increase productivity on their existing parcels of land without encroaching on forests/protected areas.
- Good environmental practices to enhance the ecological health of farms and neighboring landscape.
- Good social practices to eliminate bad social practices such as child labour, bad treatment for workers, etc



APPROACH

- **Initial field assessment**
- **Farmer mobilization** and biodiversity education
- **Training** – Use of modified form of Farmer Field School and Farmer Business School Models
- **Monitoring** eg. Farm mapping and assessment
- **Linkage** to markets with traders like Tachibana & Marubeni



KAKUM COCOA AGROFORESTRY PROJECT AT A GLANCE



Community Mobilization and Education



Training (Communities and their leadership)



Production of good planting materials



Field visitation and demonstration



Biodiversity data collection and Farm Mapping



Increased Productivity and improved ecological health

FARM MAPPING & BIODIVERSITY ASSESSMENT



FARM MAPPING AND BIODIVERSITY DATA COLLECTION

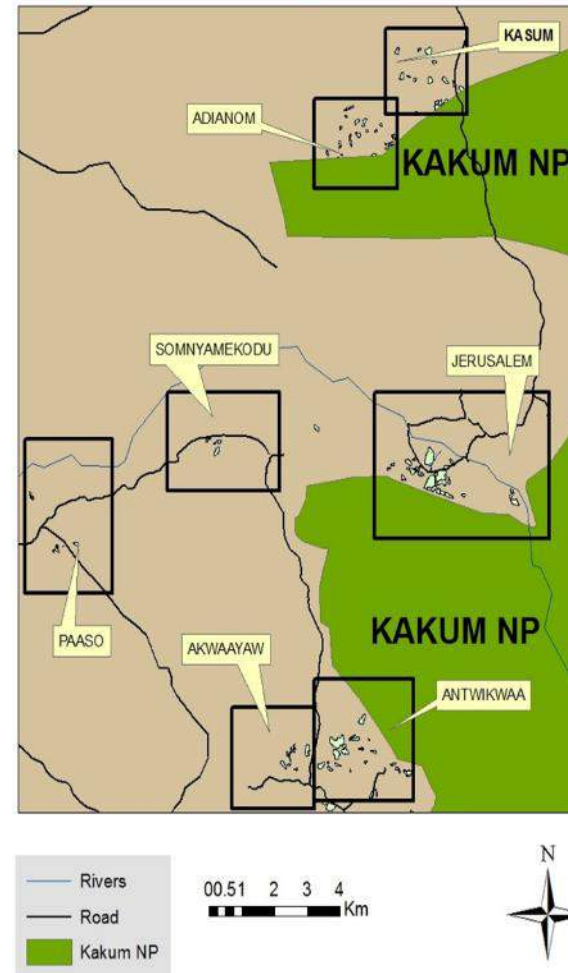
Data Collection Tools

- Paper-based using questionnaires
- Using HP IPAQ with ArcMap
- Using Android tablets/ iPads

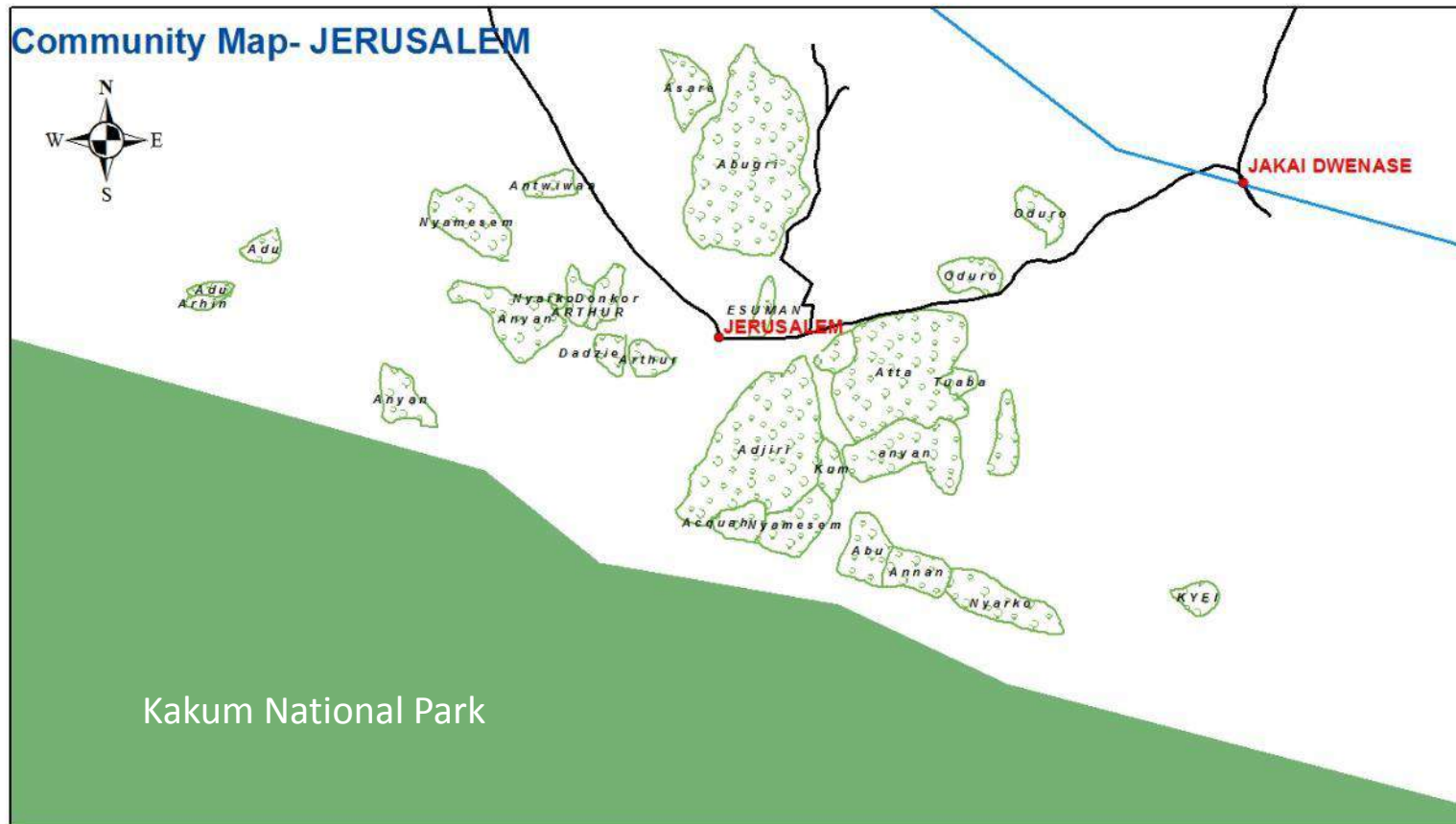
BIODIVERSITY DATA COLLECTION AND MAPPING SYSTEM			
FARM AND FARMER DATA COLLECTION FORM			
NAME OF FARMER	Bismark Kyere	AGE OF FARMER	33
COMMUNITY	Abosi	PROJECT AREA	Bio
NUMBER OF DEPENDANTS	Two (2)	NO. OF YEARS AS GROUP MEMBER	4 months
FARM DETAILS			
NO. OF FARMS	1	FARM 1	FARM 2
SIZE (ACRES)	3.35		
FARM CODE			



FARM MAPPING AT THE LANDSCAPE LEVEL



FARM MAPPING AT THE COMMUNITY LEVEL

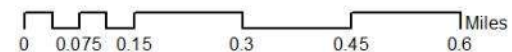


Legend

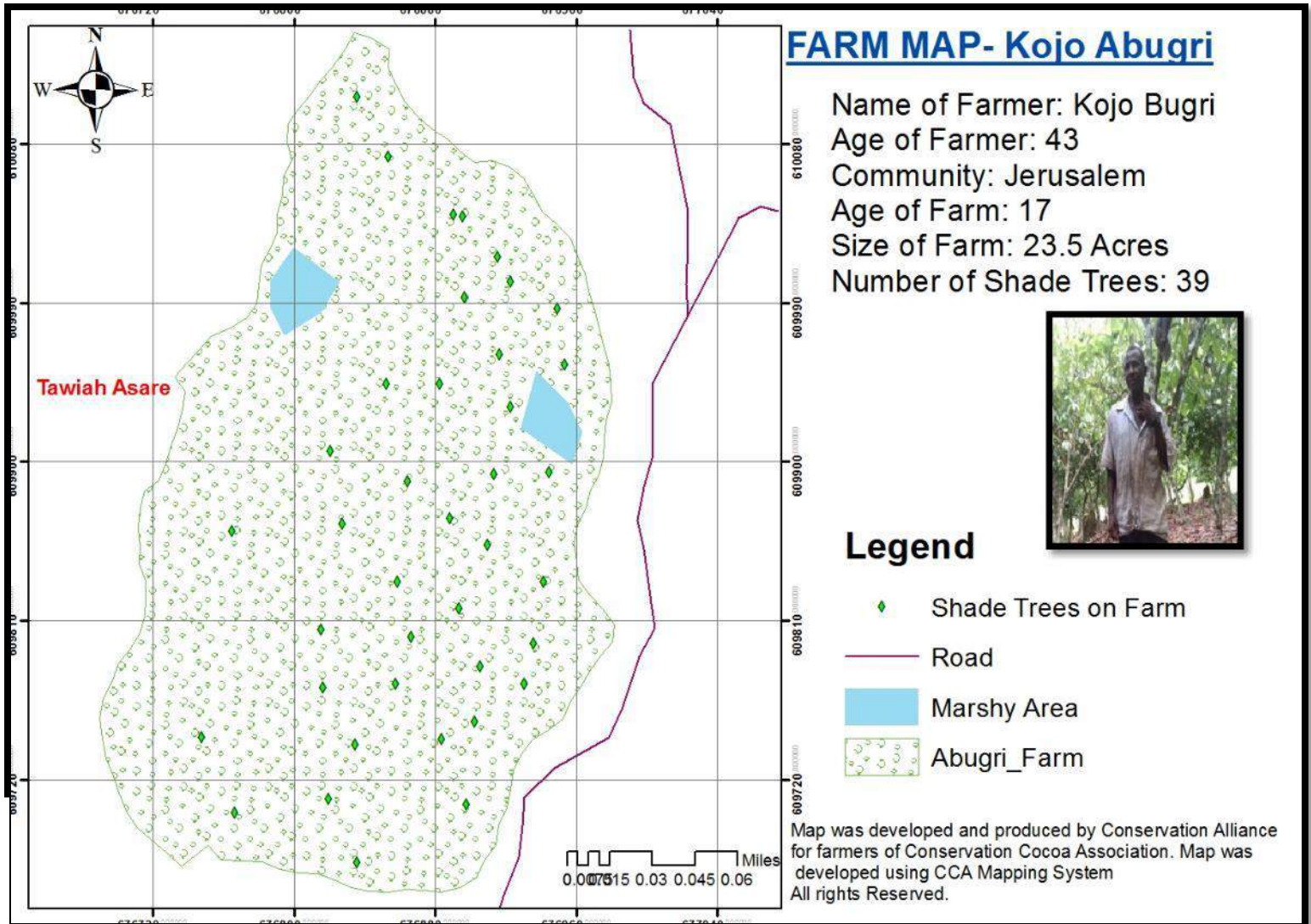
- Communities
- Streams and Springs (Seasonal)
- Rivers
- Road
- Protected Area
- ▨ Farms

COMMUNITY INFORMATION SUMMARY

Name of Community: Assin Jerusalem
 Community Code: AF008
 Number of CCA members: 46
 Number of Farms: 55
 Lead Farmer: Edward Anyan



FARM MAPPING AT THE FARM LEVEL



BIODIVERSITY ASSESMENT



APPROACHES

- **GIS and Remote Sensing approaches**
 - Satellite Imagery
 - Digitization of existing maps
 - Georeferencing of maps
 - Ancillary data
- **Ecological (Field) techniques**
 - Mapping of ground control points
 - Collection of forest attribute data (basal area, species diversity and richness, etc)
 - Deforestation and Degradation assessment



PROGRAM OUTCOME

- Increased production on same piece of land (30-80%)
- Increased number of farmers adopting practices within 5 years of project (140 -2,200 persons)
- Ecological health of farms enhanced –Limited use of agro-pesticides, adoption of shade trees, protection of water bodies and presence of wildlife on farms.
- Production of traceable and certified cocoa beans for market (Japanese and European markets)



LESSONS LEARNT

- Involvement of beneficiary farmers in project development and implementation guarantees buy-in and success.
- Biodiversity related initiatives within cocoa production landscape should target all the elements within the value chain.
- Involvement of key stakeholders in monitoring guarantees credibility.
- Training activities must be linked to crop calendar to enhance adoption.

For further Information

Contact

Program Coordinator, Conservation Alliance
Conservation Alliance, Regional Office, Accra Ghana
Tel +233 (0)302 966999. Mob:+233 (0)244 277 795
Email: info@conservealliance.org
Website: www.conservealliance.org



THANK YOU