

# ENVIRONMENTAL AND TERRITORIAL MANAGEMENT OF INDIGENOUS LANDS IN BRAZIL

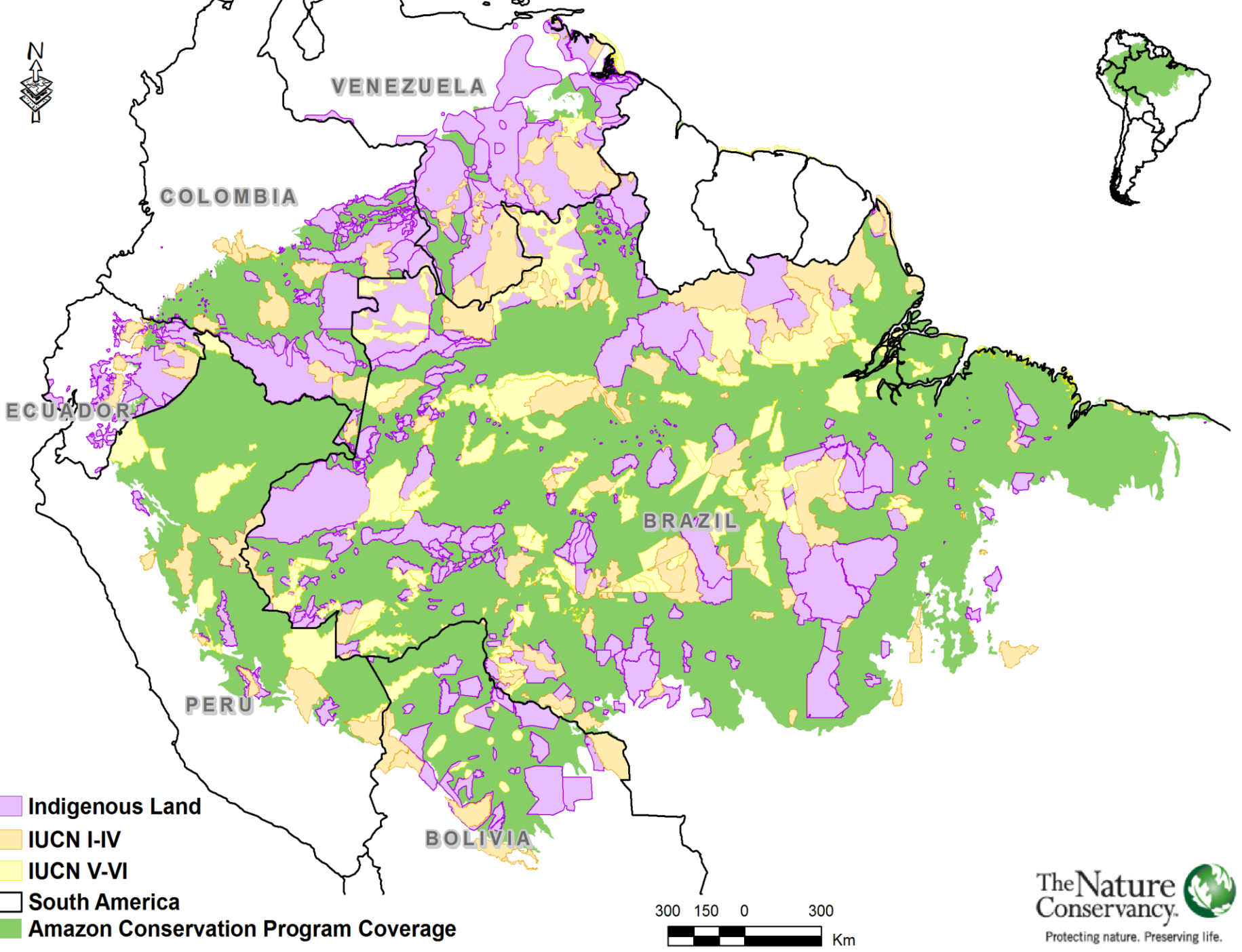






# Indigenous People in Brazil

- Population: 817.000 (2010)
  - 305 indigenous groups
  - 173 of them in the Amazon
  - 48 isolated groups
  - 230 languages
- 
- Around 110.000.000 hectares - 13% of Brazil's territory.





# Current Needs, Threats and Challenges

New social and economic demands in a context of:

- Population growth
- Large infrastructure projects
- Expansion of cattle ranching
- Expansion of agribusiness
- Timber industry
- Diminishing natural resources





Fundação Nacional do Índio  
PROJETO GATI

# ENVIRONMENTAL AND TERRITORIAL MANAGEMENT OF INDIGENOUS LANDS IN BRAZIL PROJECT



The Nature Conservancy



Ministério da Justiça  
Ministério do Meio Ambiente



Articulação  
Mato Grosso

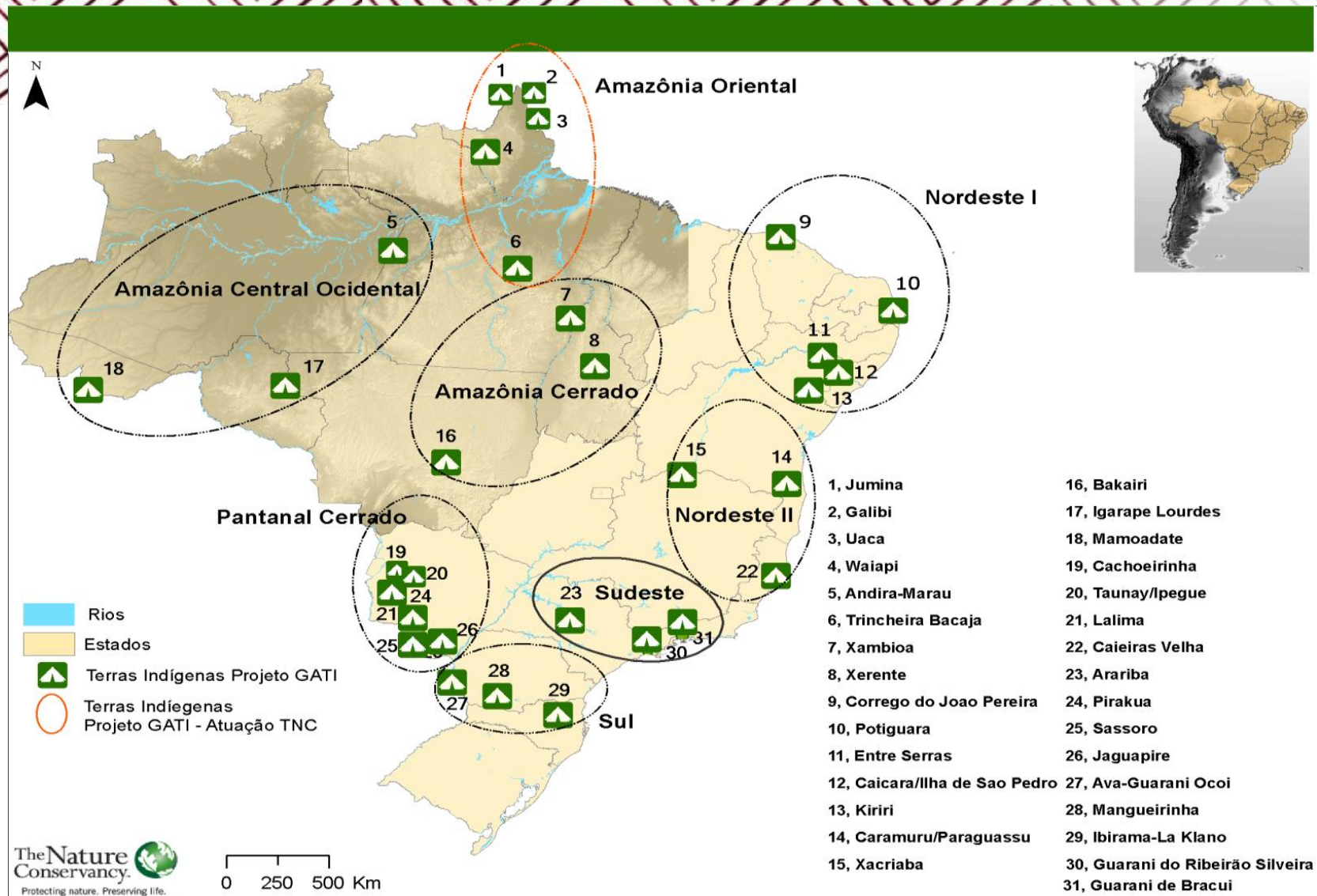


Apoio:



Deutsche Gesellschaft  
für Internationale  
Zusammenarbeit (GIZ) GmbH





Distribution of Regional Centers of GATI Project in Brazil





# National Policy of Environmental and Territorial Management of Indigenous Lands in Brazil - PNGATI



# Environmental and Territorial Management of Indigenous Lands in Brazil - PNGATI

Presidential Decree No. 7747/2012

**GENERAL PURPOSE:** To ensure and promote the protection, restoration, conservation, and sustainable use of resources from indigenous territories, to ensure the full conditions for strengthening indigenous people's quality of life and the integrity of their heritage.

## PRIORITY AREAS OF PNGATI:

I: Territorial Protection and Natural Resources

II: Governance and indigenous participation

III: Protected areas and indigenous lands

IV: Prevention and recovery of degraded areas

V: Sustainable use of natural resources and indigenous productive initiatives

VI: Intellectual property and genetic resources

VII: Training, exchange and environmental education



# Thank you!

**Jaime Siqueira**

Environmental Management General Coordination

Indigenous National Foundation (FUNAI) - Brazil  
Promotion of Sustainable Development Directorate  
Environmental Management General Coordination  
[cggam@funai.gov.br](mailto:cggam@funai.gov.br)

If interested in learning more about the implementation of the PNGATI policy and its relation to conservation areas in Brazil - **Saturday 15<sup>th</sup> @ 15:30 hs**  
**Room Hall 4B1**

