

# The International Partnership for the *Satoyama* Initiative and its activities

Fumiko NAKAO

United Nations University  
Institute of Advanced Studies



UNITED NATIONS  
UNIVERSITY

UNU-IAS

Institute of Advanced Studies



# The International Partnership for the *Satoyama* Initiative (IPSI)



Ensure Synergy,  
Complementarities among all  
the activities of organisations

Maximise Resources and Strengthen  
the work of each other (with  
knowledge, expertise etc.)

National/sub-national and regional partnership



UNITED NATIONS  
UNIVERSITY

UNU-IAS

Institute of Advanced Studies

# What is IPSI ?

- Aims to carry out the activities identified by the *Satoyama* Initiative as described in the Paris Declaration
- Open to all organisations committed to promote and support socio-ecological production landscapes for the benefit of biodiversity and human well-being to foster synergies in the implementation of their respective activities.



UNITED NATIONS  
UNIVERSITY

**UNU-IAS**

Institute of Advanced Studies



# Who can join IPSI ?

- National or local governmental organizations
- Non-governmental or civil society organizations
- Indigenous or local community organizations
- Academic, educational and/or research institutes
- Industry or private sector organizations
- United Nations or other international organizations, and others



UNITED NATIONS  
UNIVERSITY

**UNU-IAS**

Institute of Advanced Studies

# International Partnership for the *Satoyama* Initiative

## Operational Framework

Article1 - Name and Purpose

Article2 - Membership

Article3 - Principles of  
Engagement

Article4 - IPSI Regular Meetings

Article5 - Steering Committee

Article6 - Secretariat

Article7 - Activities

Article8 - Focal Members

Article9 - Members' Responsibilities

Article10 - Resources Mobilisation  
for IPSI

Article11 – Acceptance, Entry into  
Force, Amendment and  
Interpretation

Supplementary Document (Application form, Case Study Guidelines)



UNITED NATIONS  
UNIVERSITY

UNU-IAS

Institute of Advanced Studies

# Collaborative Activities for IPSI

(a) Enhance understanding and raise awareness of the importance of socio-ecological production landscapes for livelihoods and the three objectives of the Convention

<b>Cluster 1</b>	<b>Knowledge Facilitation</b>	<b>Collecting, analyzing, synthesizing and comparing case-studies, and distilling lessons learned for dissemination through a searchable online database and other means, and for use in capacity-building activities</b>
<b>Cluster 2</b>	<b>Policy Research</b>	<b>Undertaking research on ways and means to</b> <b>(i) Consolidate wisdom on securing diverse ecosystem services and values</b> <b>(ii) integrate traditional ecological knowledge and modern science;</b> <b>(iii) explore new forms of co-management systems</b> <b>(iv) revitalize and innovate socio-ecological production landscapes</b> <b>(v) integrate results in policy and decision-making processes</b>

# Collaborative Activities for IPSI

(a)...

**Cluster  
3**

**Indicator  
Research**

Developing measurable indicators of resilience associated with linkages between human well-being and the socio-ecological production landscape mosaic, including linkages between wild and anthropogenic components of landscape and ecosystems; and applying these indicators to contribute to the implementation of the Ecosystem Approach

**(b) Support and expand, where appropriate and as part of the implementation of the post 2010 Strategic Plan, socio-ecological production landscapes, building on activities (a)**

**Cluster  
4**

**Capacity  
Building**

Enhancing capacities for maintaining, rebuilding and revitalizing socio-ecological production landscapes, including through regional capacity-building workshops

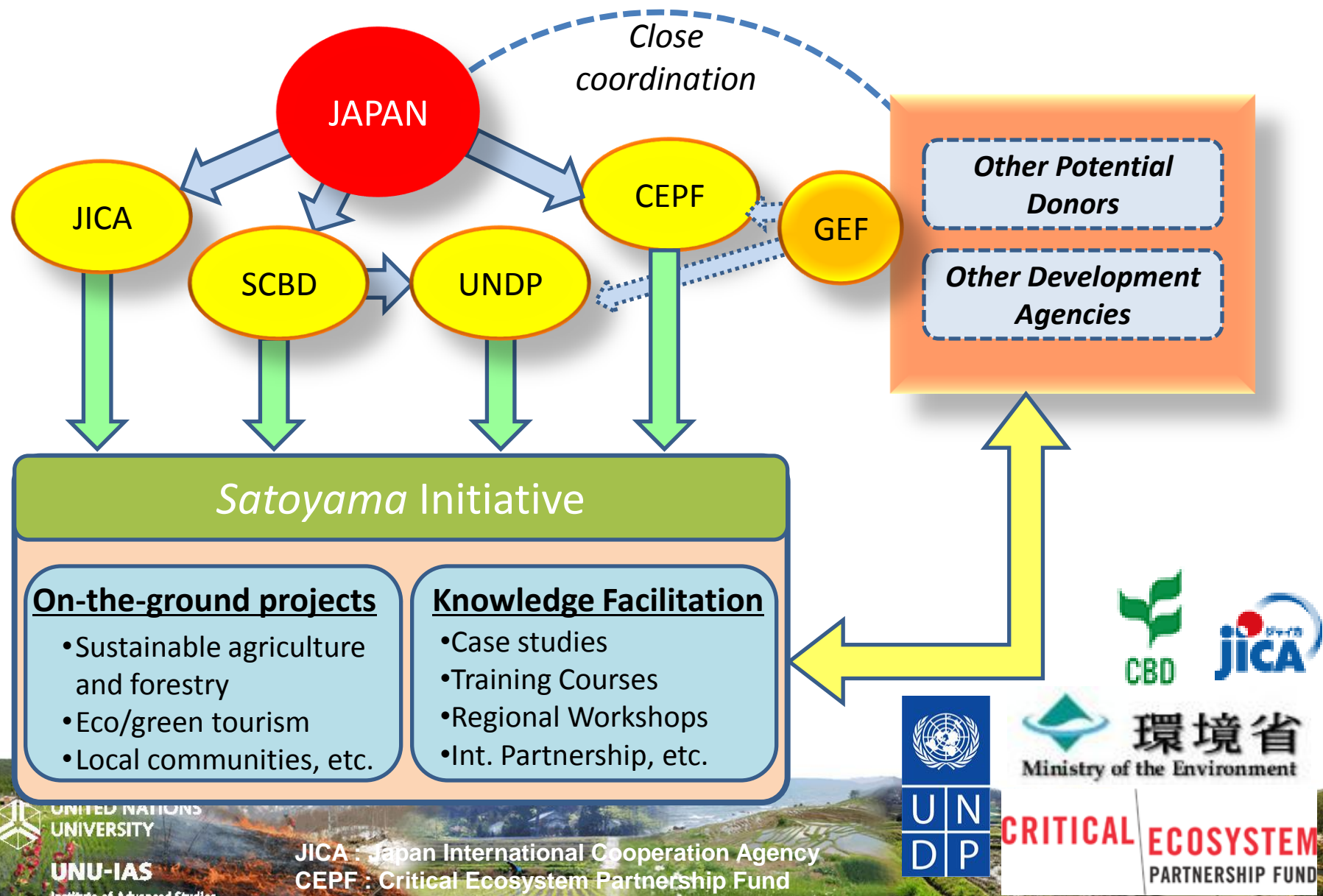
**Cluster  
5**

**On-the  
Ground  
Activities**

Provide support for on-the-ground projects and activities to maintain, rebuild and revitalize socio-ecological production landscape



# Prospective Tools to Support Activities of the *Satoyama* Initiative



JICA : Japan International Cooperation Agency  
CEPF : Critical Ecosystem Partnership Fund





# Cluster 1 Knowledge Facilitation

Proposed Activity 1  
**Collecting and showcasing case studies from each member**

Proposed Activity 2  
**Analysis of case studies and dissemination of the results**

**Satoyama Initiative Portal Site**

Replicable Knowledge

**Case Study Database**

IPSI Member

**Secretariat**

IPSI Member

Case Study

Public View

Case Study

Searchable by Themes, Geography

Case Study

**Electronic Forum**

Discussion among Cluster1 Members

Analyse, Synthesise  
Classify, Compare, and  
Distill Lessons

Cluster1 Member

...

Case Study Report



Lessons Learned from various Case Studies

Presented at Public Forum & other Events



# Satoyama Initiative

## (Critical Ecosystem Partnership Fund 2)

**CRITICAL ECOSYSTEM**  
PARTNERSHIP FUND



*CEPF is a joint program of*

- Government of Japan
- Agence Française de Développement (AFD)
- Conservation International
- Global Environment Facility (GEF)
- MacArthur Foundation
- World Bank

### *CEPF Grants*

- Target biodiversity hotspots in developing countries
- Go directly to civil society groups
- Contribute to economic well-being and social stability
- Achieve results that are tangible, replicable and scalable



UNITED NATIONS  
UNIVERSITY

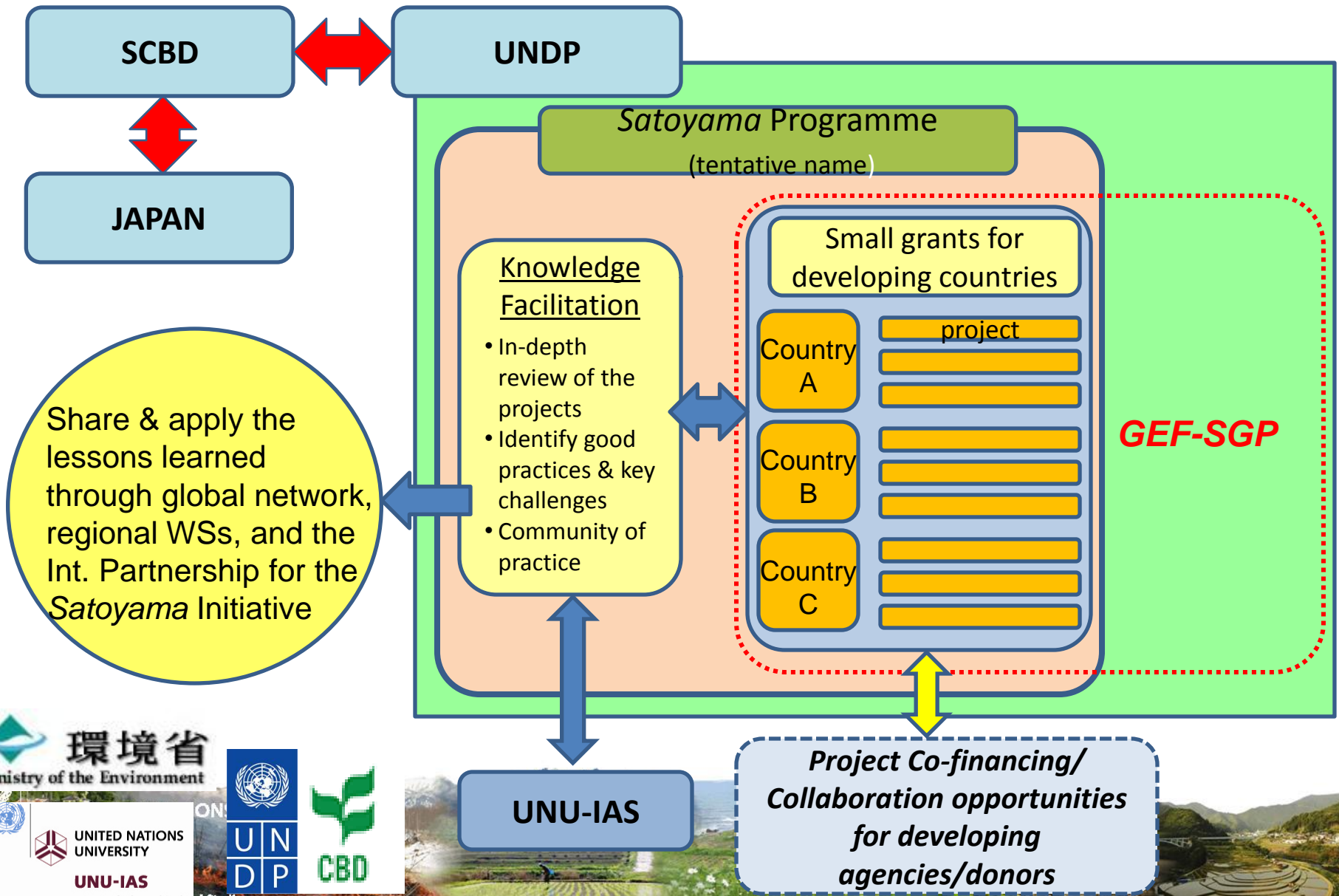
UNU-IAS

Institute of Advanced Studies





# Support for On-the-Ground Projects Implemented by UNDP



# How to apply for the IPSI?

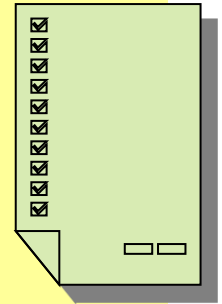
Fill out the application form which is on the portal site as well as at your hand.

Duly signed by the head of your organisation

Send to the interim secretariat, UNU-IAS,  
through e-mail [isi@ias.unu.edu](mailto:isi@ias.unu.edu) or by post.

*\*Members will be required to submit at least one case study to demonstrate and share their activities in relation to SEPLs.*

*\*Those organisations which submit the application by 30 September 2010 will be considered as founding members.*



UNITED NATIONS  
UNIVERSITY

UNU-IAS

Institute of Advanced Studies

# Time-line of IPSI



**1<sup>st</sup> Workshop**  
(Tokyo, 25 July 2009)

**2<sup>nd</sup> Workshop**  
(Penang, Malaysia 1-2 Oct 2009)



2009

**3<sup>rd</sup> Workshop**  
(Paris, France 29-30 Jan 2010)

**Preparatory Meeting for IPSI**  
Fuji Yoshida, Japan 23-24 Aug 2010

**SBSTTA 14/Side events**  
(Nairobi, Kenya 10-21 May '10)



**Pan-African Meeting**  
(Libreville, Gabon, 12-17 Sept.)

**WS on SI and IPSI**  
Brasilia Brazil, 22 Sept.)

2010

**Launch of IPSI**  
(Aichi Nagoya, 19 Oct. 2010 @COP)



**1<sup>st</sup> General Meeting of IPSI**

2011

**Further Development of the Partnership**



UNITED NATIONS  
UNIVERSITY

UNU-IAS

Institute of Advanced Studies

# Thank you!

*Please visit :*  
<http://satoyama-initiative.org/>



UNITED NATIONS  
UNIVERSITY

**UNU-IAS**

Institute of Advanced Studies

