

IPSI:

Perspectives on Sustainable Socio-Ecological Production Landscapes and Seascapes

Prof. Kazuhiko Takeuchi
Vice-Rector, United Nations University



**UNITED NATIONS
UNIVERSITY**

Development of IPSI

Launching of IPSI (October 2010, Nagoya, Japan)

51 founding members

The *Satoyama* Initiative was recognized in the CBD COP10 decision on the Sustainable Use of Biodiversity (X/32)



IPSI-1 (March 2011, Nagoya, Japan)

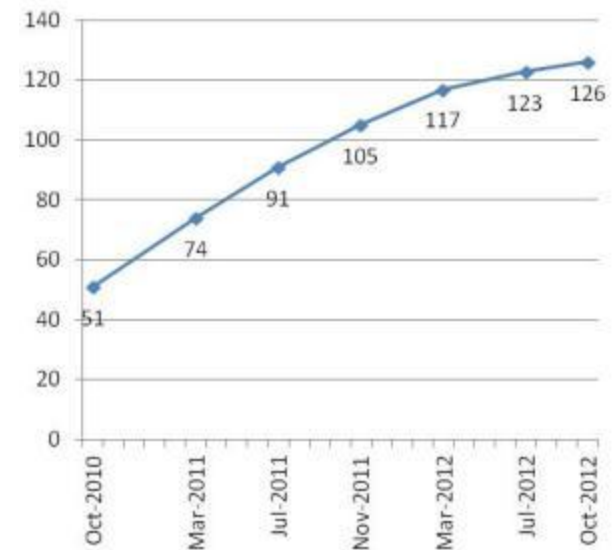
"Working together for societies in harmony with nature: The first steps"

43 organizations presented their activities in accordance with IPSI's five pillars of activities

IPSI-2 (March 2012, Nairobi, Kenya)

"Strategy for Realizing Society in Harmony with Nature"

Three working groups (on resilience, restoration, and revitalization) undertook discussions towards **developing areas for concrete action and collaboration** within the partnership



Number of IPSI members

IPSI-3 (October 2012, Hyderabad, India)

"Contribution to Achieving Aichi Biodiversity Target"

Three working groups discussed how member activities can contribute to achieving the Aichi Biodiversity Targets .

- Indicators of resilience
- Synergy between traditional knowledge and modern science
- Sustainable production and consumption



XI Conference of Parties
CONVENTION ON BIOLOGICAL DIVERSITY
HYDERABAD INDIA 2012

Rio+20 and the *Satoyama* Initiative



- Rio+20 took place in Rio de Janeiro, Brazil, in June 2012 focusing on achieving sustainable development and alleviating poverty by transitioning to a **green economy**.
- The *Satoyama* Initiative coincides with and is useful for the promotion of the green economy, which is **based on biodiversity and ecosystem services**.



Side event of the *Satoyama* Initiative at the Rio+20

“The Future We Want”

“We call for holistic and integrated approaches... which will guide humanity to live in harmony with nature...”

(Paragraph #40)

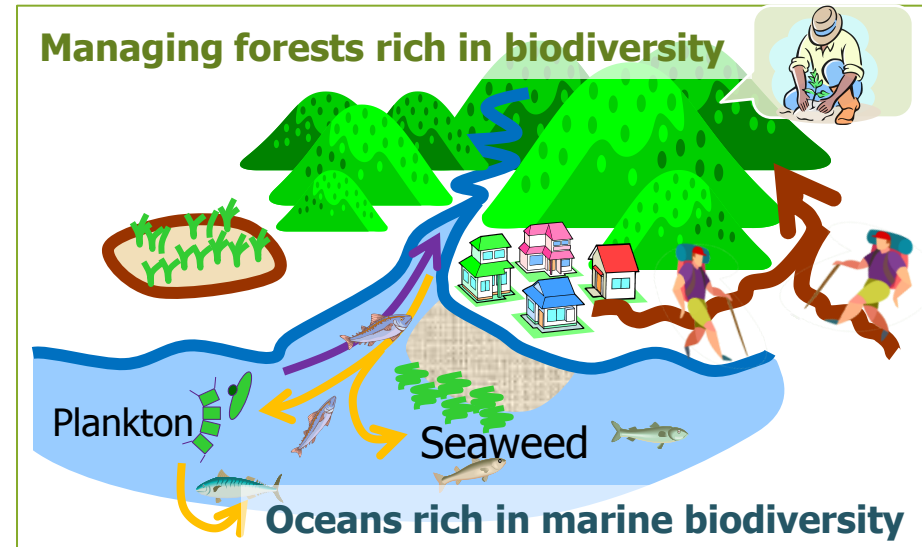
*“We agree to promote **international cooperation, and partnerships**, as appropriate, and information exchange [...] for the purpose of encouraging active involvement of all stakeholders in the conservation and sustainable use of biodiversity [...]”* **(Paragraph #202)**



Agroforestry in Amazon
(brazil nut and cacao)

Sharing the Experience of Post-Disaster Rebuilding with the World

- Japanese participants at Rio+20 shared experiences in disaster rebuilding from the **Great East Japan Earthquake** in 2011 with the world
- Establishing a society in harmony with nature through **post-disaster recovery** serves as a **model for a green economy**
- Establishing a sustainable society that utilizes **natural capital** is also an important issue in developing countries
- It is important to strengthen efforts involving **cooperation on an equal level among various stakeholders**

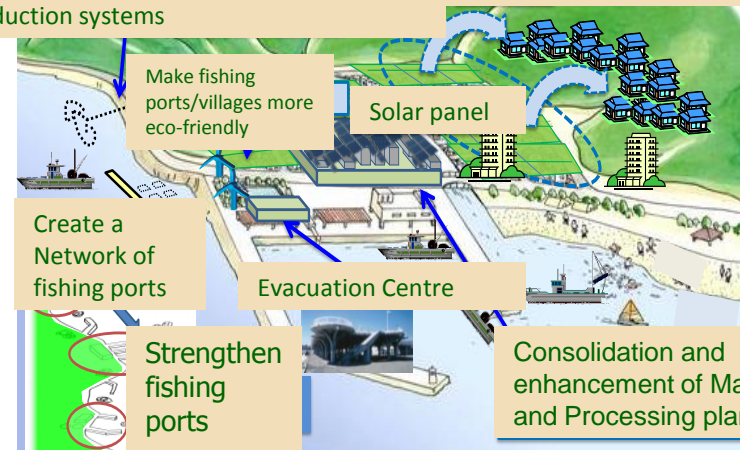


The linkage between Satoyama and Satoumi

Source: MOEJ

Support the re-startup costs of fishing and aquaculture industries, and promote a transition to high production, high profit production systems

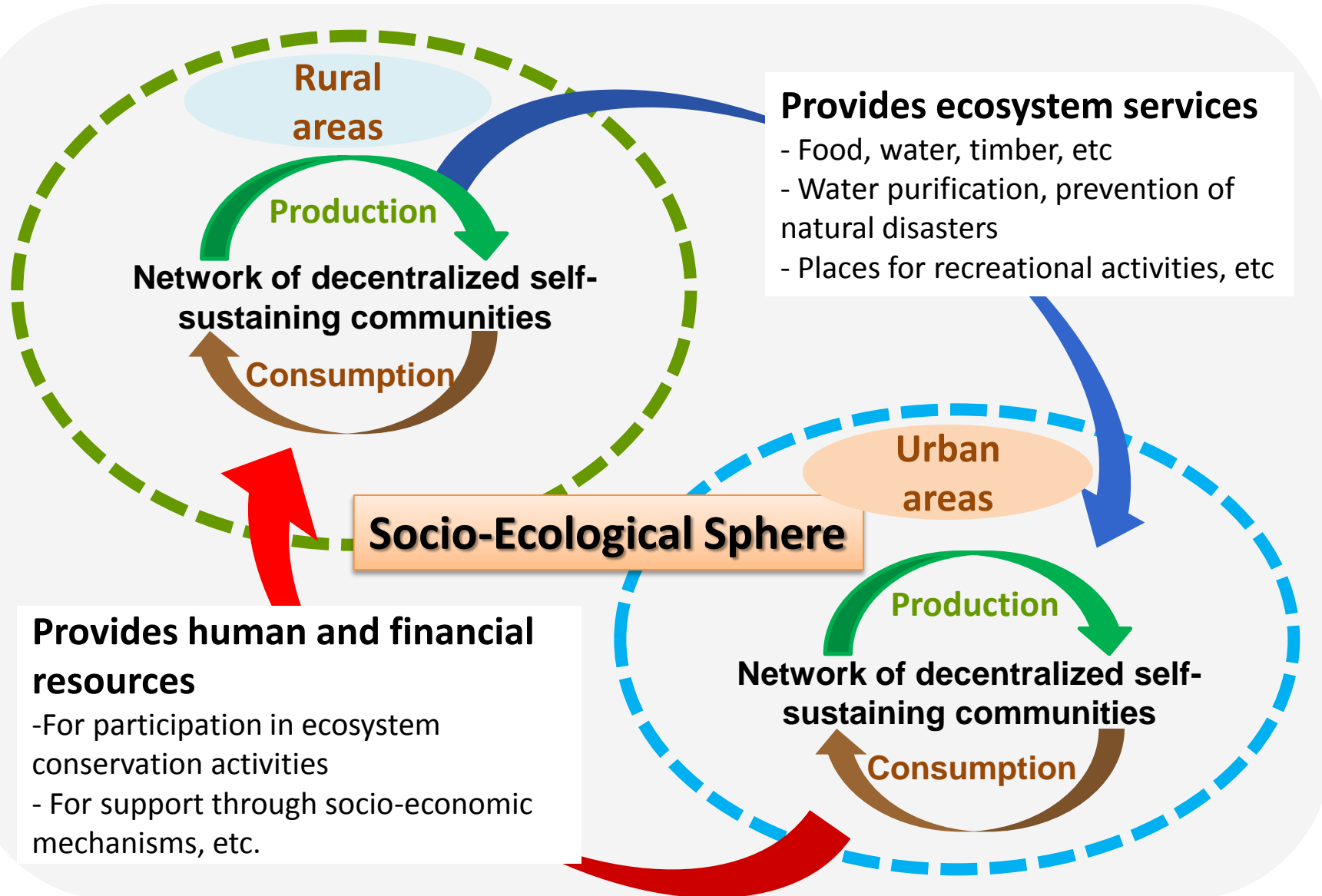
Relocate to higher ground



Revitalizing the fishing ports

Source: MAFF

Human Well-Being Enriched by Ecosystem Services: An Integrated Regional Perspective



Proposed concept in Japan's newly revised NBSAP in September 2012

Developing New Business Models: Bounty of *Satoyama* and *Satoumi* in Noto Peninsula



Wajima-nuri
lacquerware



Ownership program for
terraced paddy field



Ama fishing



"Noto Vegetables"



Agehama Salt
Manufacturing



Kiriko festival



Sake making



Nipponia nippon

(Photos by Ishikawa Pref.)

Adding value to agricultural products through:

- Branding of indigenous vegetables
- Organic farming
- Promoting of traditional production, etc.

Tourism and Satoyama experience

- Scenery, local food, traditional festivals and crafts
- Agricultural activities, mushroom harvesting, satoyama management, charcoal making
- Ownership program for terraced paddy fields

- Conservation of biodiversity
- Revitalization of economy
- Inheritance of traditional culture



Restructuring of communities

Summary: Toward Establishing Societies in Harmony with Nature

- The **IPSI strategy was endorsed** by the members; it will serve as a platform for promoting member activities and collaboration.
- It now is expected that the IPSI strategy will be **internalized and realized** into the collaborative activities and/or activities of each member organization.
- There is a need for **transforming and rebuilding resilient systems**, which entail socio-economic and environmental sustainability, to move **toward the realization of society in harmony with nature**.

The IPSI Strategy

I. Introduction

II. Vision

III. Mission

- Work together to promote SEPLS concept and practices
- Maintain and enhance SEPLS contribution
- Yield benefits on the ground

IV. Specific Objectives

1. Knowledge and understanding
2. Direct and underlying causes
3. Benefits
4. Human, institutional and financial

V. Monitoring and reporting

- Progress reports (indicators)
- Dissemination

Annex. Guidance to achieve the strategic objectives



Thank you!