



The International Partnership for the *Satoyama* Initiative (IPSI)

Toby Hodgkin

**Principal Scientist, Bioversity International
on behalf of ICRAF, UNEP and Bioversity International**

About Us and Our Missions

- ***Bioversity International*** : undertakes, encourages and supports research and related activities on the use and conservation of agricultural biodiversity, especially genetic resources, to create more productive, resilient and sustainable harvests.
- ***United Nations Environment Programme (UNEP)*** : provides leadership and encourages partnership in caring for the environment by inspiring, informing, and enabling nations and peoples to improve their quality of life without compromising that of the future generations.
- ***World Agroforestry Centre (ICRAF)*** : generates science-based knowledge on the diverse roles that trees play in rural transformation in the developing world where smallholder households strategically increase their use of trees in agricultural landscapes to improve their food security, nutrition, income, health, shelter, energy resources and environmental sustainability.

The *Satoyama* Initiative

Socio-ecological production landscapes (SEPLs) :

Beneficial to biodiversity,

Exist all over the world, but

Threatened in many places

The *Satoyama* Initiative aims to

(a) Enhance understanding and raise awareness of the importance of SEPLs

(b) Support and expand SEPLs, building on activities in (a) above.

Socio-ecological production landscapes (SEPLs)



Dynamic mosaics of habitats and land uses that have been shaped over the years by the interactions between people and nature. If managed effectively, they are beneficial to maintain biodiversity and ecosystem services



**Two trends seem almost universal
in the tropics:**

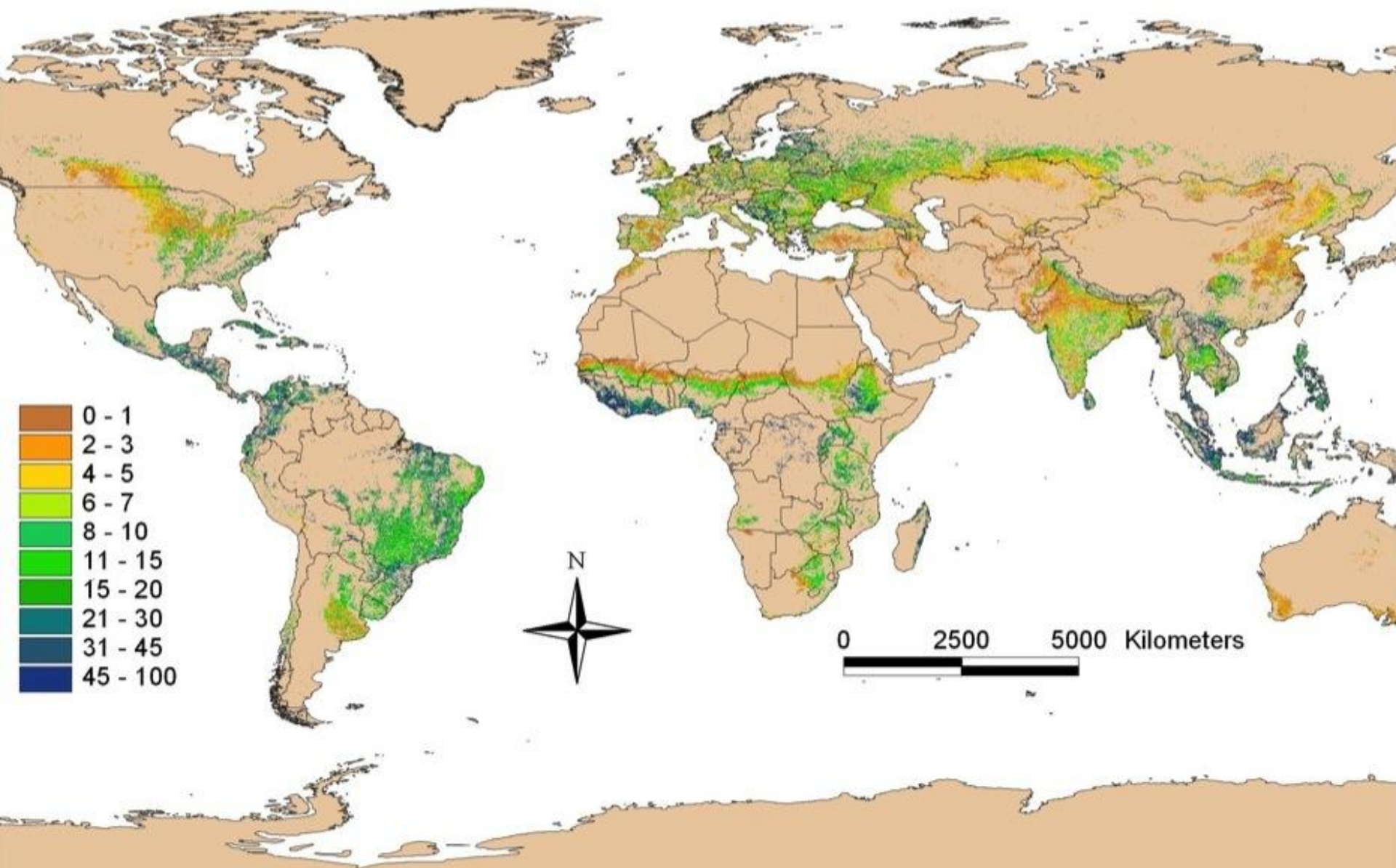
**-- the number of trees in forests is
declining, and**

-- the number on farms is increasing'

FAO. 2005. State of the World's Forests

Photo: P. Bordoni, Bioversity

Tree Cover on Agricultural Land - Global



SEPLs Case

West Java, Indonesia

West Java is highly populated, and most land is cultivated to rice on paddy fields, agroforestry, and forests. These landscapes reduce soil erosion, control water flow, while providing fruits, fuel, and livelihood elements.



SEPLs Case

Mt. Kilimanjaro Region, Tanzania



Chagga communities have practiced complex agroforestry for centuries, providing key ecosystem services to protect critical watersheds and biodiversity on Mt. Kilimanjaro, which is recently under threat of climate change.

SEPLs Case Kitui District, Kenya



Communities grow a wide variety of crops fruit and traditional vegetables in a mixed landscape contributing to dietary diversification, providing income opportunities and resilience in the face of change.

SEPLs Case Home Gardens, Cuba



In 36 Cuban home gardens there were:

- 101 plant families
- 362 genera
- 591 species
- As much lima bean genetic diversity as in the *ex situ* genebank

(Castineiras et al.)

SEPLs Case

Kagogo, Northern Rwanda



Soil erosion has caused loss of fertile soil, leading to sediment and pollution in lakes and rivers.

Sustainable land management, esp. AF has reversed soil degradation and kept water clean, benefitting communities.

Organizations/ Initiatives working on SEPLs (some examples)

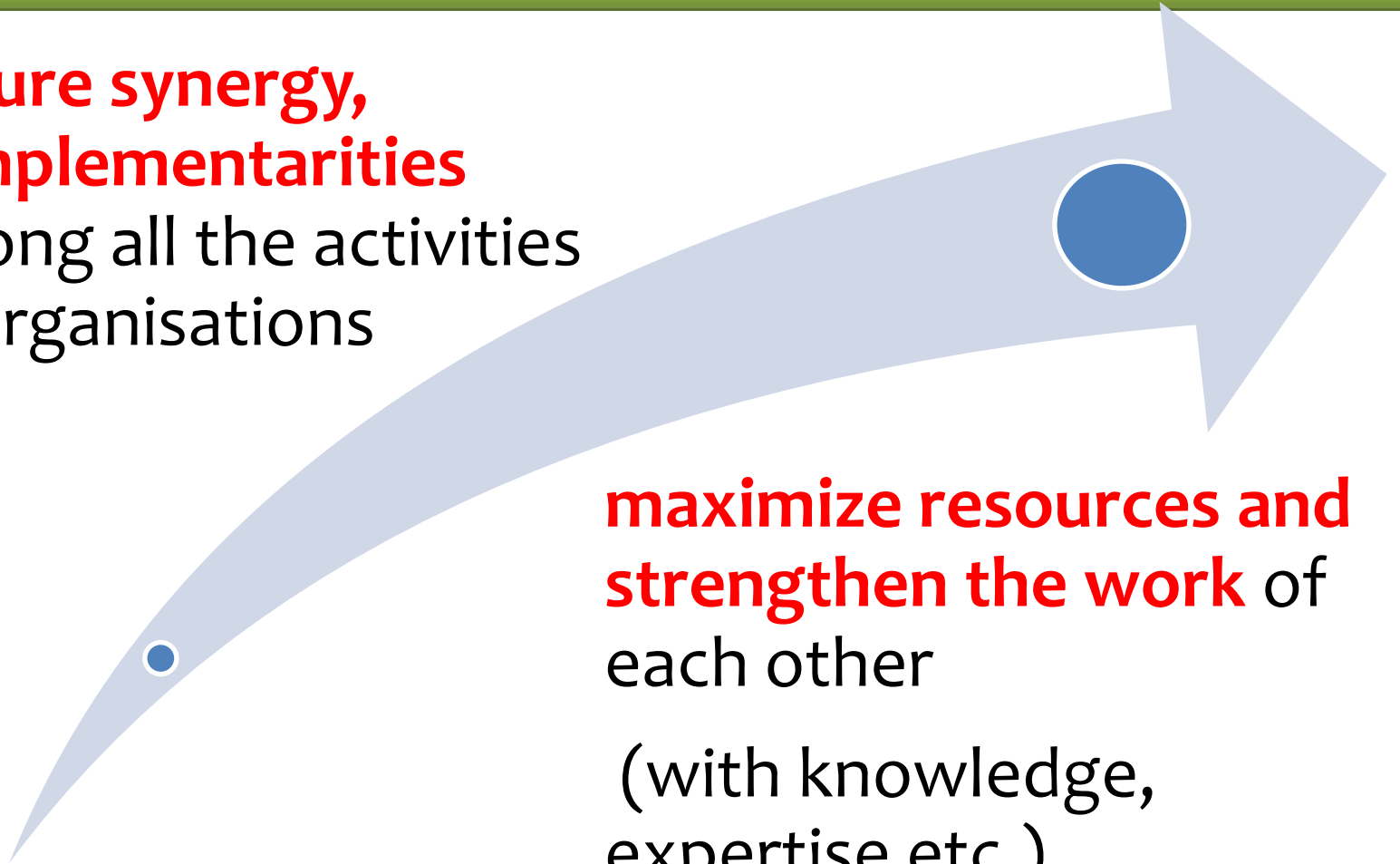
- ❖ **Community based organizations:**
 - Sokid Bundu Tuhan, Saba, Malaysia
- ❖ **Governments:**
 - Department of Forests, Nepal
- ❖ **International Organizations**
 - GEF, FAO, IUCN
- ❖ **International Networks**
 - Landcare International
 - Platform for Agrobiodiversity Research
- ❖ **NGOs:**
 - Association for Nature and Sustainable Development (ANDES), Peru
 - Ecoagriculture Partners
 - Terroires et Culture

Why International Partnerships?

**Ensure synergy,
complementarities**
among all the activities
of organisations

**maximize resources and
strengthen the work** of
each other

(with knowledge,
expertise etc.)



Expected Role (I) Enhance Understanding and Raising Awareness

Research on ways & means to:

- Promote wisdom on ecosystem services
- Bridge TEK & modern science
- Explore new forms of co-management
- Revitalize and innovate SEPL
- integrate policy results & decision-making

**Dissemination,
Education Promotion**

**Measurable
indicators of
resilience for SEPL**

**Case-studies, lessons
learned & searchable
online databases**

Case Studies

Collaborative Projects

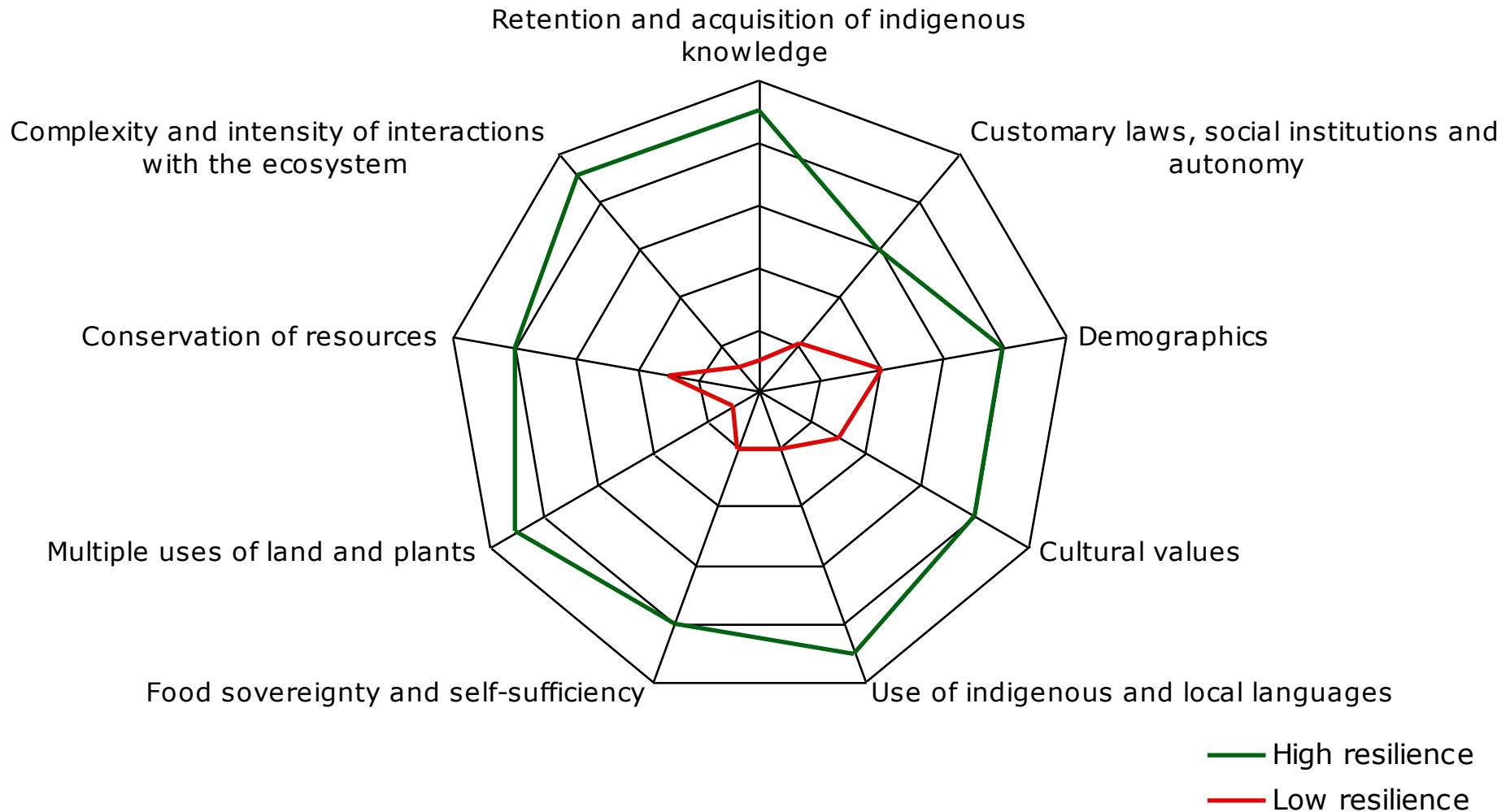
Partners *

Partners **

Partners***

Electronic forum

Indicators to measure the resilience of social-ecological systems



Support and Expand Socio-Ecological Production Landscapes

- **Enhance capacity**
(e.g. through regional workshops)
- **Provide support (financial, institutional, technological etc.) for on-the-ground projects and activities**



Activities and Partnerships

Global Network for Research and Mobilization

- **ICRAF hosts the secretariat of Landcare International**--- a professional association of stakeholders to enhance worldwide recognition and adoption of the Landcare approach as a viable model for environment and resource conservation and community action.
- **Bioversity hosts the Platform for Agrobiodiversity Research** --- enhancing sustainable management and use of agrobiodiversity through research on all components of agro-biodiversity at all scales, including landscape scale.
- **UNEP works on Biocultural Community Protocols**--- systems that embody rights, duties, values, norms and beliefs of communities on how to use and conserve biodiversity, ecosystems and their services and the environment in general.

Current and future Activities

Ongoing Research Activities & Programs

- Research on ecosystem management, governance & climate change
- Studies on agrobiodiversity maintenance and use in landscapes across the world

Partnership on Satoyama Initiative

- Side events at UNFCCC and World Congress on Agroforestry in 2009
- Agroforestry Symposium in Tokyo Dec 2009
- Preparation on Paris Declaration at UNESCO Paris Jan 2010

Future Activities

- Joint preparation during COP10 at Nagoya
- Furthering collaboration on Research and Policy

IPSI's modus operandi

✓ Membership is open to all organizations and donors dealing with socio-ecological production landscapes

Needed

✓ Further develop the modus operandi of the partnership and its funding

