



# The International Partnership for the *Satoyama* Initiative (IPSI)

**Dennis Garrity**

**Director General, World Agroforestry Centre (ICRAF),  
on behalf of Bioversity International, UNEP and ICRAF**

# About Us and Our Missions

- ***Bioversity Int'l*** : undertakes, encourages and supports research and related activities on the use and conservation of agricultural biodiversity, especially genetic resources, to create more productive, resilient and sustainable harvests.
- ***United Nations Environment Programme (UNEP)*** : provides leadership and encourages partnership in caring for the environment by inspiring, informing, and enabling nations and peoples to improve their quality of life without compromising that of the future generations.
- ***World Agroforestry Centre (ICRAF)*** : generates science-based knowledge on the diverse roles that trees play in rural transformation in the developing world where smallholder households strategically increase their use of trees in agricultural landscapes to improve their food security, nutrition, income, health, shelter, energy resources and environmental sustainability.

# The *Satoyama* Initiative

## **Socio-ecological production landscapes (SEPLs) :**

Beneficial to biodiversity,

Exist all over the world, but

Threatened in many places

## **The *Satoyama* Initiative aims to**

(a) Enhance understanding and raise awareness of the importance of SEPLs

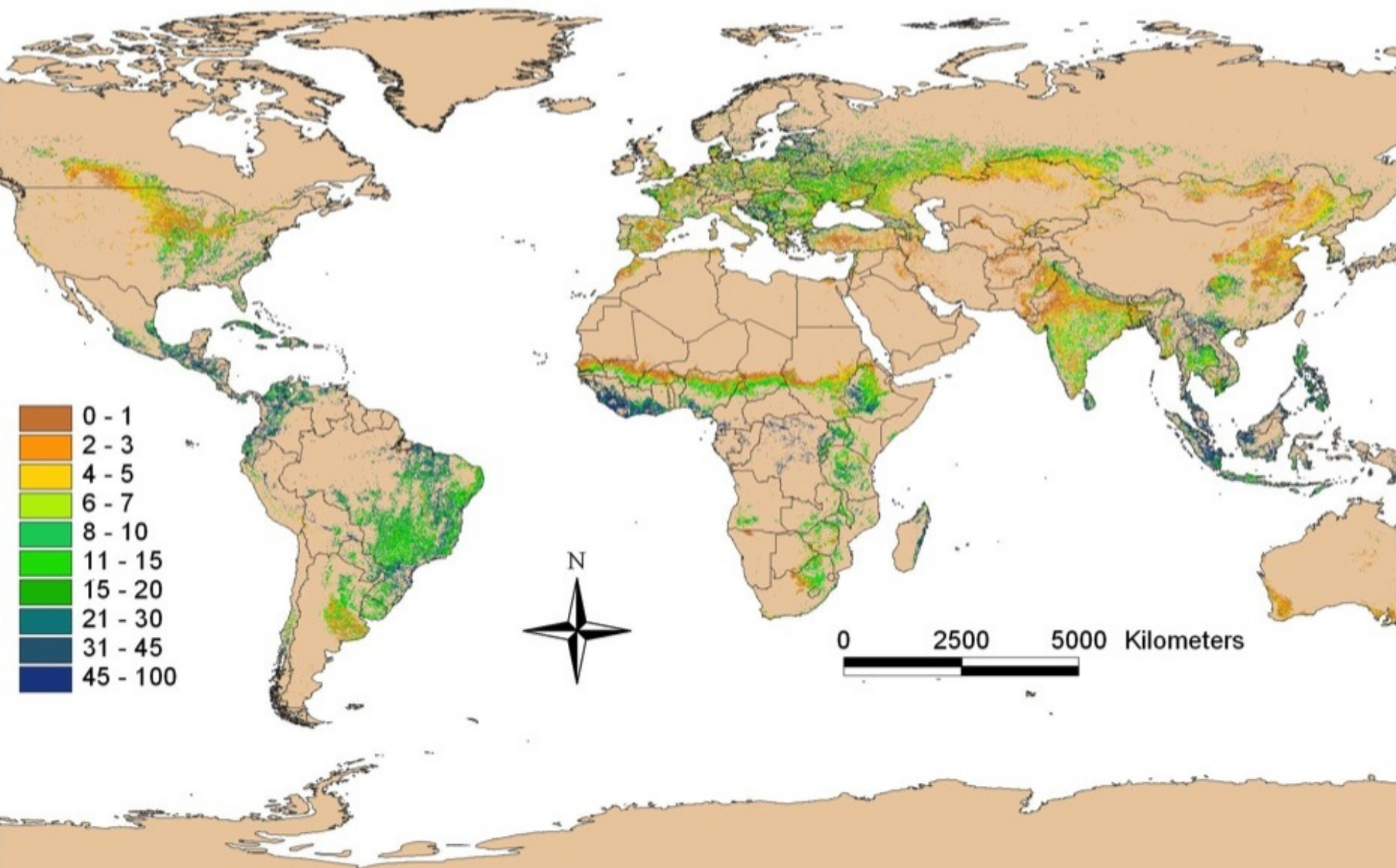
(b) Support and expand SEPLs, building on activities in (a) above.

# Socio-ecological production landscapes (SEPLs)



**Dynamic mosaics of habitats and land uses that have been shaped over the years by the interactions between people and nature. If managed effectively, they are beneficial to maintain biodiversity and ecosystem services**

# Tree Cover on Agricultural Land - Global



***'Two trends seem almost universal  
in the tropics:***

*-- the number of trees in forests is **declining**,  
and*

*-- the number on farms is **increasing**'*

***FAO. 2005. State of the World's Forests***



# SEPLs Case

## West Java, Indonesia

West Java is highly populated, and most land is cultivated to rice on paddy fields, agroforestry, and forests. These landscapes reduce soil erosion, control water flow, while providing fruits, fuel, and livelihood elements.



# SEPLs Case

## Mt. Kilimanjaro Region, Tanzania



Chagga communities have practiced complex agroforestry for centuries, providing key ecosystem services to protect critical watersheds and biodiversity on Mt. Kilimanjaro, which is recently under threat of climate change.



# SEPLs Case

## Kagogo, Northern Rwanda



Soil erosion have caused loss of fertile soil, leading to sediment and pollution in lakes and rivers.

Sustainable land management, esp. AF has reversed soil degradation and kept water clean, benefitting communities.

# SEPLs Case

## Evergreen Agriculture



THIS IS THE FUTURE

*Faidherbia albida* agroforests on millions of hectares in Africa enhance soil fertility and increase food crop yields. These locally-developed systems exploit the tree's unique trait -- dormancy during the growing season.

# Arisdorf 1999



# Organizations/ Initiatives working on SEPLs (some examples)

## ❖ **Community based organizations:**

- Sokid Bundu Tuhan, Saba, Malaysia

## ❖ **Governments:**

- Department of Forests, Nepal

## ❖ **International Organizations**

- GEF, FAO, IUCN

## ❖ **International Networks**

- Landcare International

## ❖ **NGOs:**

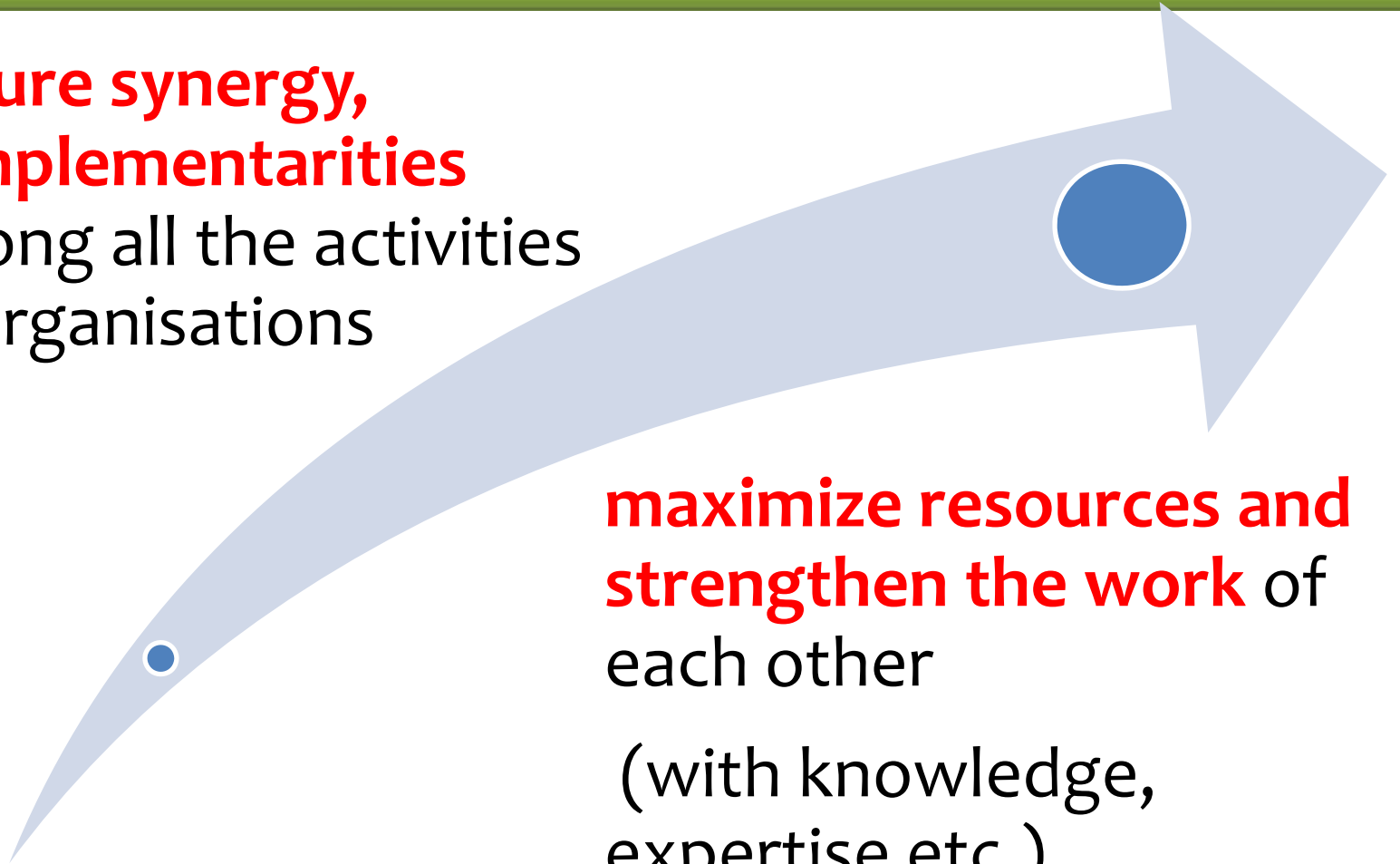
- Association for Nature and Sustainable Development, Peru
- Ecoagriculture Partners
- Terroires et Culture

# Why International Partnerships?

**Ensure synergy,  
complementarities**  
among all the activities  
of organisations

**maximize resources and  
strengthen the work** of  
each other

(with knowledge,  
expertise etc.)



# Expected Role (I) Enhance Understanding and Raising Awareness

## Research on ways & means to:

- Promote wisdom on ecosystem services
- Bridge TEK & modern science
- Explore new forms of co-management
- Revitalize and innovate SEPL
- integrate policy results & decision-making

Dissemination,  
Education Promotion

Measurable  
indicators of  
resilience for SEPL

Case-studies, lessons  
learned & searchable  
online databases

Case Studies

Collaborative Projects

Partners \*

Partners \*\*

Partners\*\*\*

Electronic forum

# Support and Expand Socio-Ecological Production Landscapes

- **Enhance capacity**  
(e.g. through regional workshops)
- **Provide support (financial, institutional, technological etc.) for on-the-ground projects and activities**



# Our Activities

## *Global Network for Research and Mobilization*

- **ICRAF hosts the secretariat of Landcare International**--- a professional association of stakeholders to enhance worldwide recognition and adoption of the Landcare approach as a viable model for environment and resource conservation and community action.
- **UNEP works on Biocultural Community Protocols**--- systems that embody rights, duties, values, norms and beliefs of communities on how to use and conserve biodiversity, ecosystems and their services and the environment in general.



# Our Activities

## *Global Network for Research and Mobilization*

- **Bioversity** has accumulated a body of research results and experience on how traditional farming communities manage agro-biodiversity in their landscapes to ensure food security and eco-health.
- It hosts the **Platform for Agrobiodiversity Research** which aims at enhancing sustainable management and use of agro-biodiversity through filling gaps in research of all components of agro-biodiversity and at all scales, including landscape scale.

# Our Activities Cont'd

## ***Ongoing Research Activities & Programs***

- Sub-programs on ecosystem management, governance & CC
- Studies on agro-biodiversity landscapes across Asia/Africa

## ***Partnership on Satoyama Initiative***

- Side events at World Congress on Agroforestry in 2009
- Agroforestry Symposium in Tokyo Dec 2009
- Preparation on Paris Declaration at UNESCO Paris Jan 2010

## ***Future Activities***

- Joint preparation during COP10 at Nagoya
- Furthering partnership and network on Research and Policy

# IPSI's modus operandi

✓ Membership is open to all organizations and donors dealing with socio-ecological production landscapes

Needed

✓ Further develop the modus operandi of the partnership and its funding

