



# **Strategy for the International Partnership for the Satoyama Initiative: An introduction**

Kalemani Jo Mulongoy  
UNU-IAS

---

**Achievements and Further Development of the International Partnership for  
the *Satoyama* Initiative**

*Side event*

11 October 2012, Hyderabad, India

# A strategy for:

**Coherence, Co-evolution, Coordination, Cooperation and Synergy**



## **Steering Committee (Nov 2010) tasked IPSI Secretariat to draft Strategy elements for consideration by a Subcommittee on Strategy Development**

- Nairobi : 12 March 2012
- Yokohama: 22-23 July 2012
- Hyderabad: 5 October 2012

**Additional discussions took place by e-mail and skype with members of the Steering Committee and other partners**



**Strategy adopted by Steering Committee and endorsed by IPSI Assembly on 6 October 2012**

# The IPSI Strategy

## I. Introduction

- Description, status and trends of socioecological production landscapes and seascapes (SEPLS)
- Box : Characteristics of SEPLS in the *Satoyama* Initiative (SI)
- International Partnership for the *Satoyama* Initiative (IPSI)
- Diagram showing the relationship between SI and IPSI



## II. Vision

- Societies in harmony with nature

## III. Mission

## IV. Specific Objectives (4)

## V. Monitoring and reporting

## Annex

# The IPSI Strategy (ctd.)

## I. Introduction

## II. Vision

## III. Mission

- Work together to promote SEPLS concept and practices
- Maintain and enhance SEPLS contribution
- Yield benefits on the ground

## IV. Specific Objectives (4)

## V. Monitoring and reporting

## Annex



# The IPSI Strategy (ctd.)

## I. Introduction

## II. Vision

## III. Mission

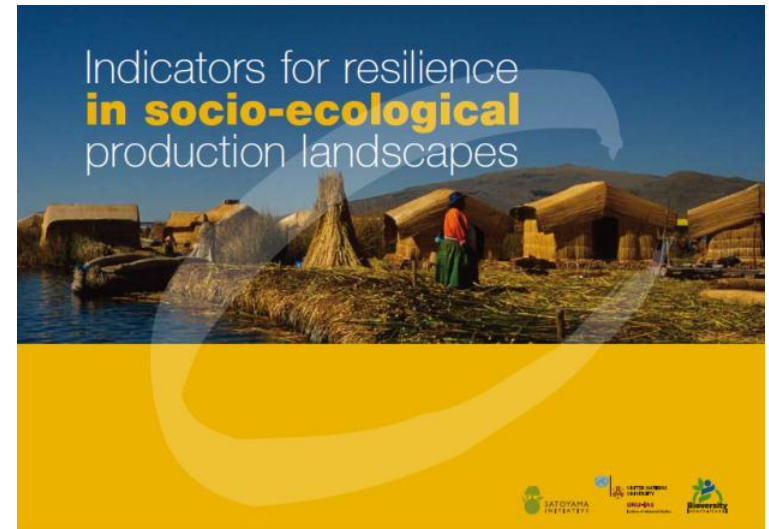
## IV. Specific Objectives (4):

1. Knowledge and understanding
2. Direct and underlying causes
3. Benefits
4. Human, institutional and financial

## V. Monitoring and reporting

- Progress reports (indicators)
- Dissemination

**Annex:** Guidance to achieve the strategic objectives



# Value added of the IPSI strategy

- I. Enhance complementarity and synergy
- II. Facilitate
  - Reporting and communication
  - Recognition of SEPLS value
  - Mainstreaming
  - Resource mobilization
- III. Enhance contribution to
  - Strategic Plan for Biodiversity and its Aichi Targets
  - Rio Conventions
  - Other relevant agreements and goals e.g. MDGs

**Benefit to biodiversity and human well-being**





# Thank you

