



The Critical Ecosystem Partnership Fund
Providing support for on-the-ground projects and activities to maintain, rebuild and revitalize socio-ecological production landscapes.

Satoyama Initiative Preparatory Meeting, Fujiyoshida, Yamanashi, Japan
August 23, 2010

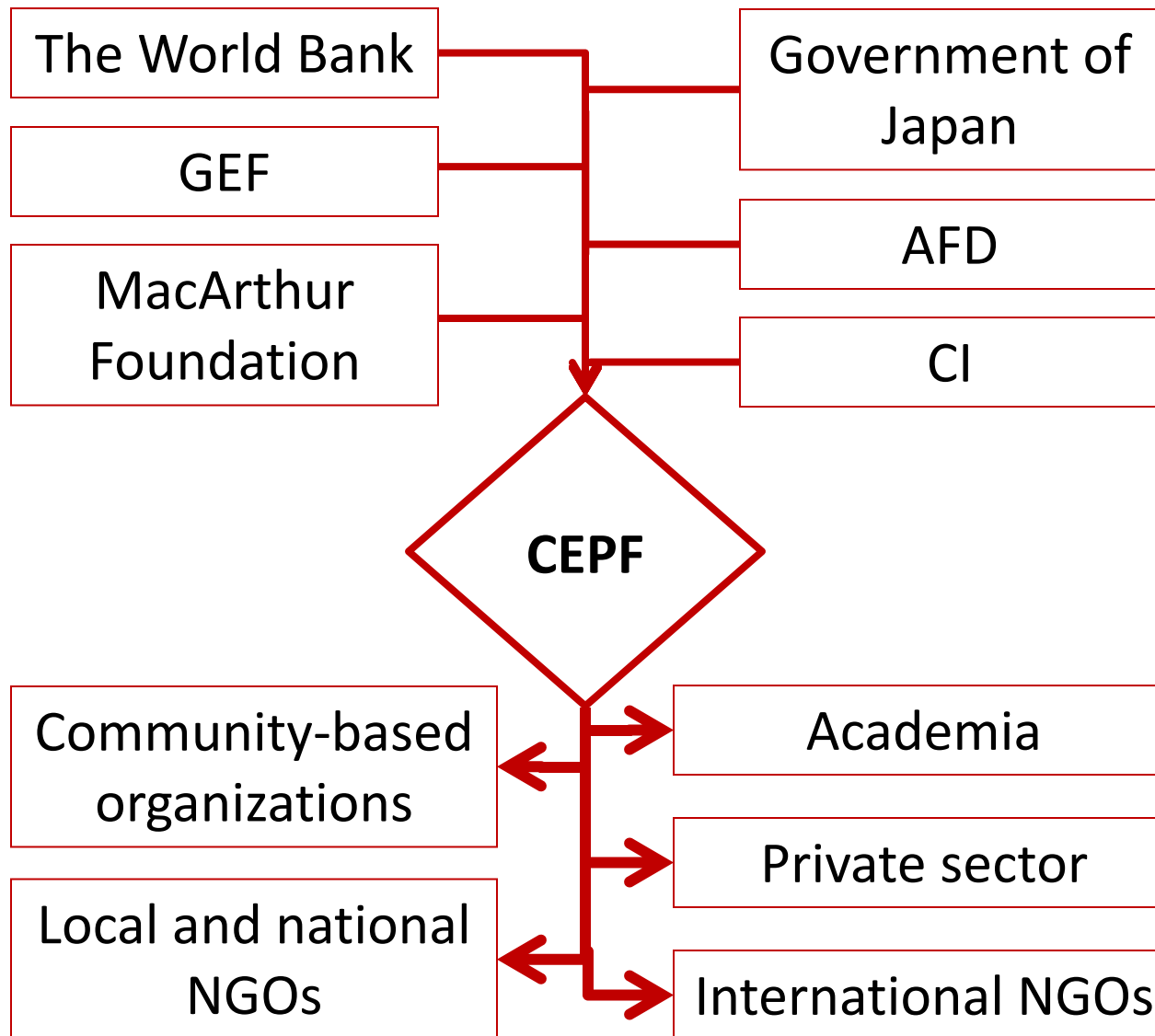
CRITICAL ECOSYSTEM
PARTNERSHIP FUND

A Unique Partnership

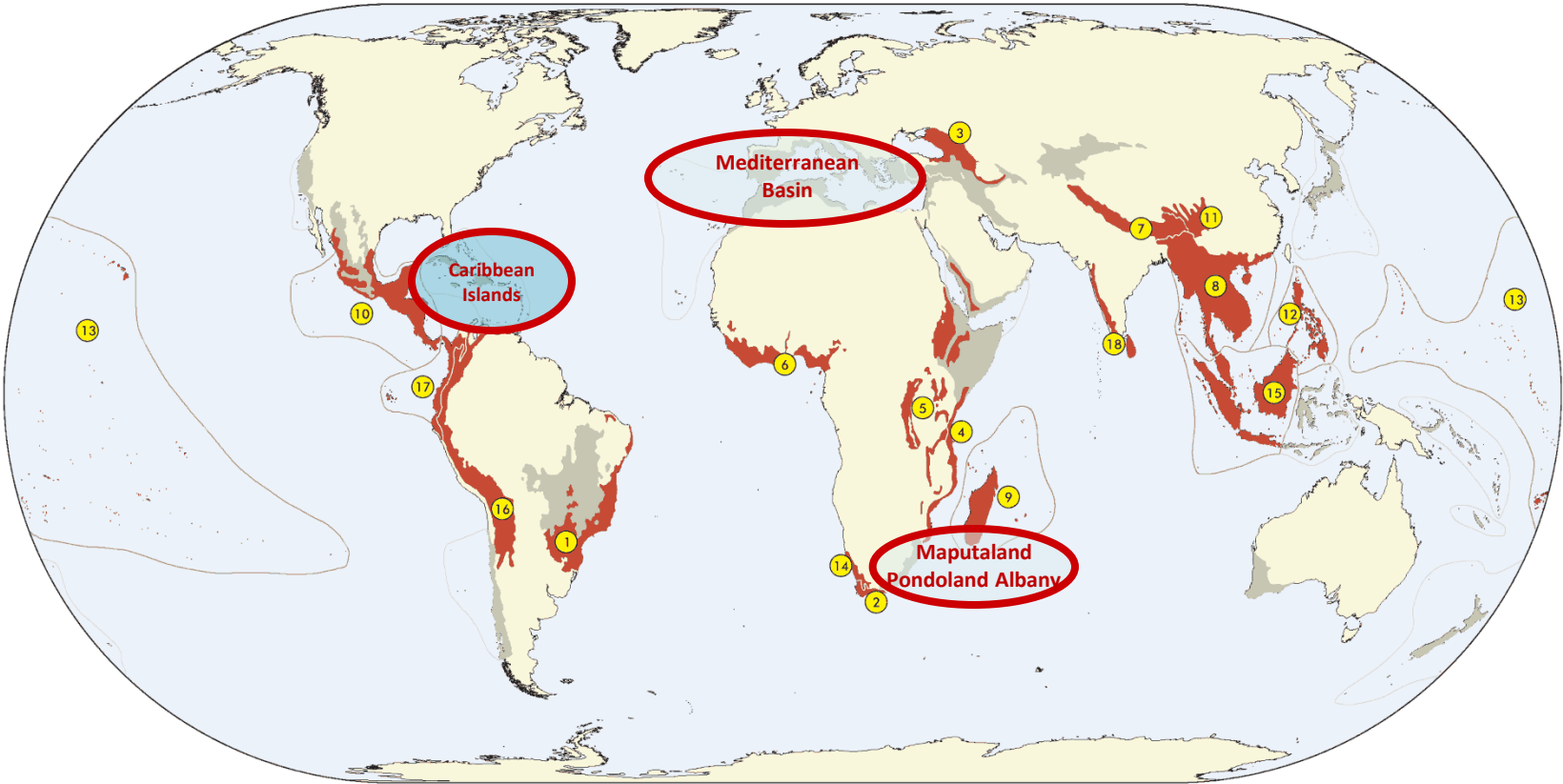
- Government of Japan
- The World Bank
- l'Agence Française de Développement
- Conservation International
- Global Environment Facility
- MacArthur Foundation

CEPF provides **strategic** assistance to **nongovernmental organizations** and other private sector partners to help conserve **biodiversity hotspots**

Filling a unique niche



Investment regions



Critical Ecosystem Partnership Fund

biodiversity hotspot CEPF investment
 other

Earth's biologically richest places, with high numbers of species found nowhere else. Hotspots face extreme threats and have already lost at least 70 percent of their original vegetation.

- | | | |
|--|---|---|
| <ul style="list-style-type: none"> ① Atlantic Forest ② Cape Floristic Region ③ Caucasus ④ Coastal Forests of Eastern Africa ⑤ Eastern Afromontane ⑥ Guinean Forests of West Africa | <ul style="list-style-type: none"> ⑦ Himalaya ⑧ Indo-Burma ⑨ Madagascar and Indian Ocean Islands ⑩ Mesoamerica ⑪ Mountains of Southwest China ⑫ Philippines | <ul style="list-style-type: none"> ⑬ Polynesia-Micronesia ⑭ Succulent Karoo ⑮ Sundaland ⑯ Tropical Andes ⑰ Tumbes-Chocó-Magdalena ⑱ Western Ghats & Sri Lanka |
|--|---|---|



Five Pillars of CEPF's Investment

Biodiversity

CEPF works to protect the Earth's most biologically rich yet threatened areas.

Human well-being

CEPF grants improve human well-being by assisting people to benefit from the ecosystems they depend on.

Civil society

CEPF enables civil society to participate in and influence the conservation of critical ecosystems.

Strategy

CEPF mobilizes local, regional and global actors to create and achieve a common conservation vision for each of the world's biodiversity hotspots.

Partnership

CEPF unites diverse donor partners to maximize the efficiency and effectiveness of their conservation investment.



Quick facts

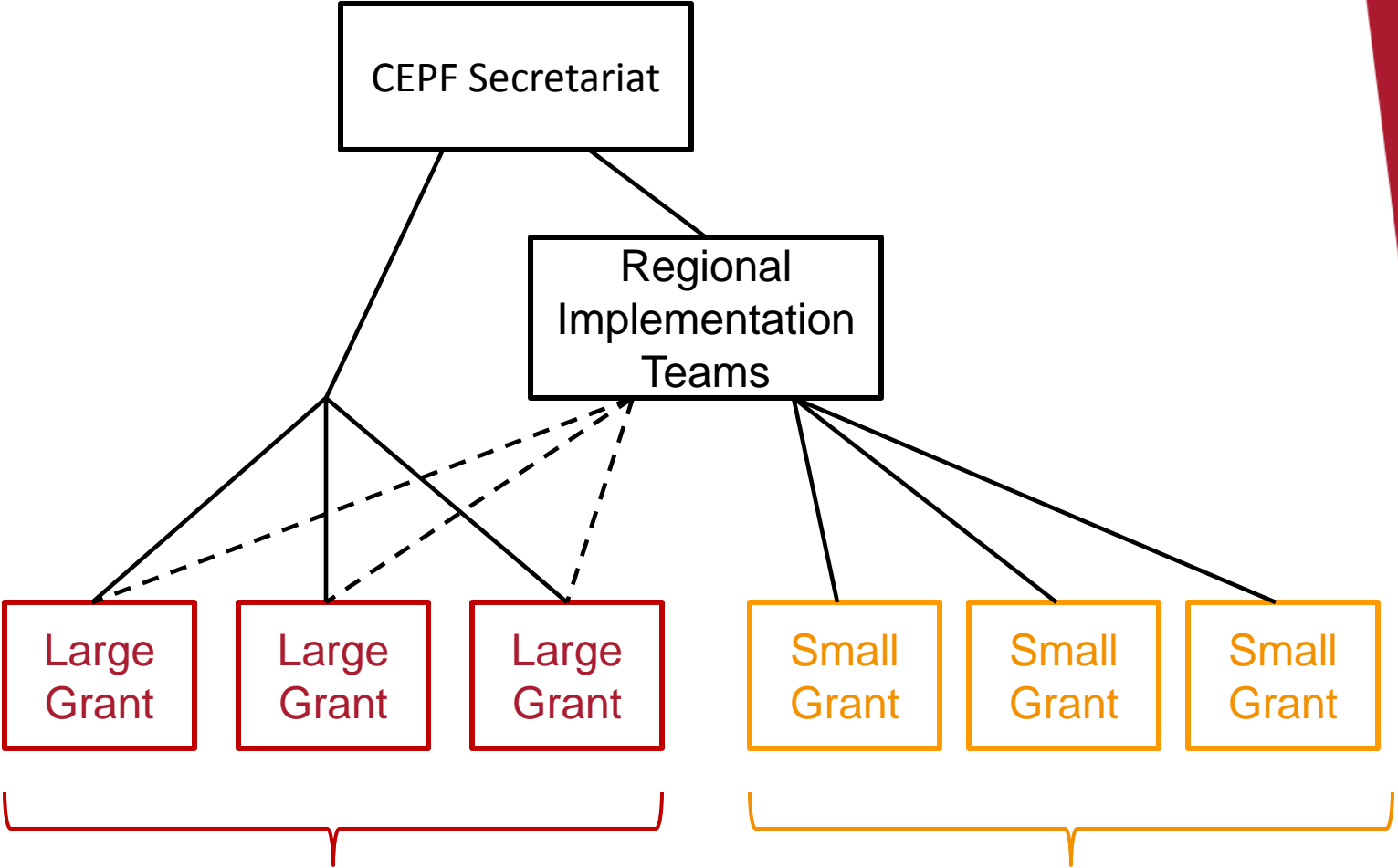
- 18 investment strategies implemented
- 51 countries
- \$124 million in grants awarded
- \$261 million leveraged by civil society groups receiving those grants
- 1,592 civil society groups supported



Ecosystem Profiles

- Developed before CEPF invests in a region
- Multi-stakeholder conservation plans and visions, which establish a common vision for collaborative action
- Developed through a process of extensive stakeholder consultation and desk research
- Identify conservation funding gaps and opportunities for investment by CEPF and other donors
- Mobilize local, regional and global actors to create and achieve a common conservation vision for each biodiversity hotspot

Architecture of CEPF's investment



International and national NGOs, academia and private sector

National and local NGOs, community groups and individuals

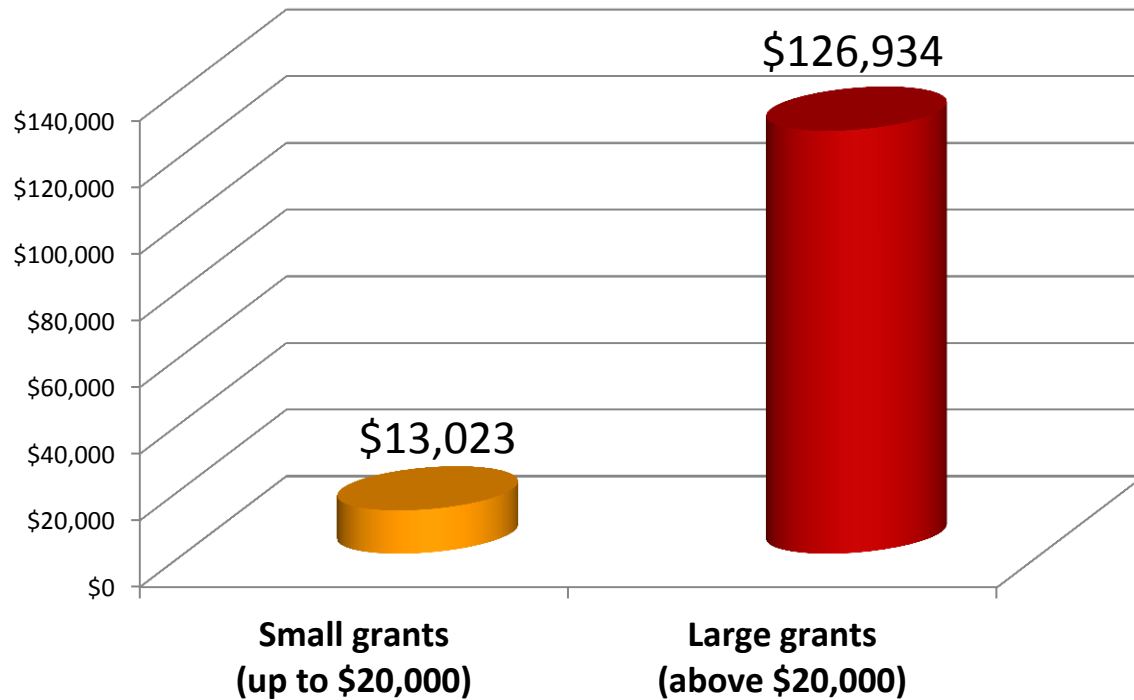


Regional Implementation Teams

- Act as an extension service to assist civil society groups in designing and implementing successful projects
- Review grant applications and manage external reviews with technical experts
- Award and manage small grants
- Widely communicate CEPF objectives, lessons learned and results
- Engage the existing regional programs of CEPF donors, government, and other sectors in implementation

CEPF grant making

Median grant size





Outcomes to date

- **Improving land management for biodiversity and people:** 10 million hectares of protected areas created and over 21 million hectares with improved management
- **Mainstreaming conservation in development decisions:** At least 25 sectoral policies, supporting biodiversity conservation and mainstreaming conservation into development policy
- **Collective civil society impacts:** More than 80 sustained civil society networks and 13 of 18 regions show improvements in their conservation communities



Lessons Learned by CEPF relevant to the Satoyama Initiative: Providing Support for On-the-Ground Projects

Developing an investment strategy

- Develop a scientifically based conservation strategy in collaboration with relevant stakeholders
- Integrate with existing networks and partnerships
- Secure broad-based support for the investment strategy within the region by relevant partners
- Ensure effective, transparent local coordination with the investment region
- Open call for proposals, review and response to applicants
- Broad and locally relevant communication of CEPF's goals and investment priorities

Engaging Civil Society

- Provide assistance to civil society in applying for grants
- Develop locally owned plans for landscapes outside of protected areas
- Develop pilot schemes to test project effectiveness with a view to scaling up activities.
- Provide alternative livelihoods and benefit sharing that result in improved natural resource management
- Foster the creation of partnerships between organizations

Managing a grant portfolio and measuring impacts

- Establish a direct link between the original investment strategy and the project
- Establish links between grantees within landscapes and regions
- Support exchanges between related projects
- Invest in creative approaches to test their effectiveness through small grants
- Monitor the capacity of civil society engaged in biodiversity conservation
- Monitor impacts in livelihoods

Conclusions

- Listen to recommendations from local stakeholders in developing a strategy
- Define a relevant niche and remain true to this
- Build upon existing networks and activities
- Establish a local coordination entity
- Invest in landscape-scale planning activities to create a common vision
- Encourage partnerships in implementing grants
- Support the most effective and culturally relevant alternative livelihood activities



THANK YOU!

www.cepf.net

CRITICAL | ECOSYSTEM
PARTNERSHIP FUND