



Asia-Pacific Regional Workshop on International *Satoyama* Initiative Concept



**Native Reserves in Sabah, Malaysia, as an
example of *Satoyama*-like landscape**

M. Hasegawa, JICA

October 2009

Bilateral International Cooperation by JICA

1. Part 1: Conceptual Overview

- Concept of JICA's cooperation (BBEC in Sabah)
- Concept of *Satoyama* (for discussion)

2. Part 2: Practical Insight

- Presentation by the friends from Bundu Tuhan, Sabah, Malaysia
- Management of *Satoyama*-like landscape in Sabah (Bundu Tuhan Native Reserve)

Bilateral International Cooperation by JICA

Part 1

1. Basic Concept of the Project in Sabah

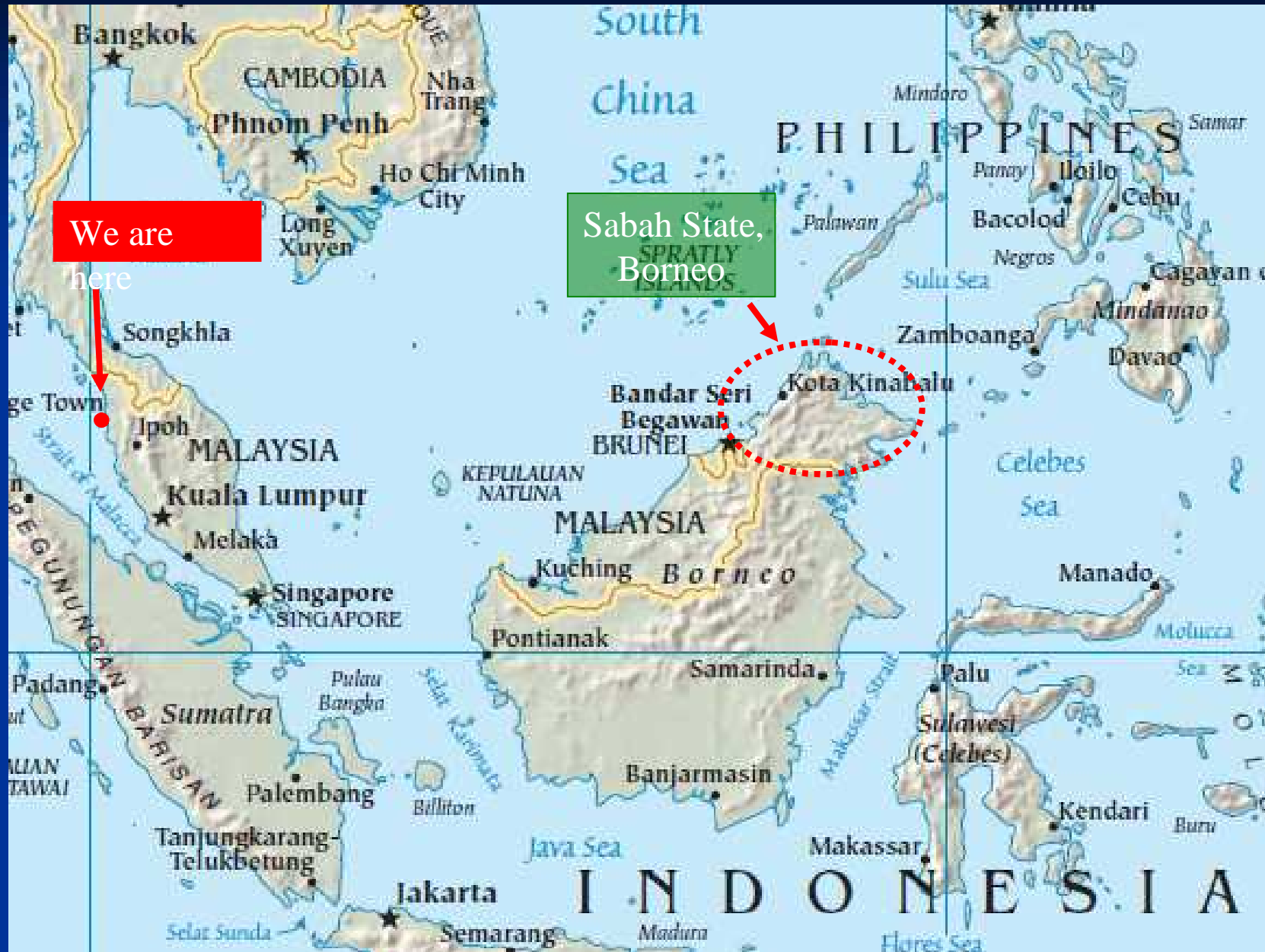
- Bornean Biodiversity & Ecosystems Conservation (BBEC) Programme (Phase I & II)
- Overview: Strategies, target and approach

2. *Satoyama*-like landscape in Sabah

- Why do we study native reserves in Sabah?
- Relationships: Native reserves in Sabah / ICCA / *Satoyama*

3. Concluding Remarks

State of Sabah, Malaysia



BBEC Phase I & II (2002-2012)

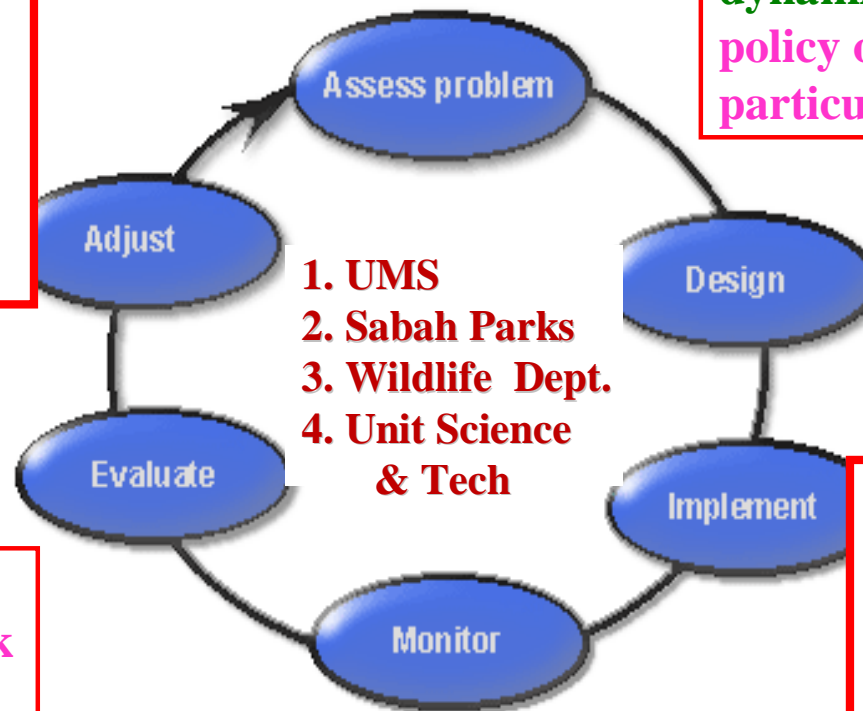
Overall Concept

Main Concept of BBEC: Ecosystem Approach needs a system to implement adaptive management

Adaptive management is a **systematic & cyclic process** for improving management policies and practices by learning-by-doing & feedback to decision-making.

Requirement 2
Institutional & Administrative System (BBEC II)

Monitoring & Evaluation to feedback the findings to make further decisions



Nature is unpredictable & dynamic – we admit what policy or practice is "best" for particular management issues.

Requirement 1
Research & Monitoring Skills (BBEC I)

Goal and Objectives of the BBEC (Phase I & II)

- **The Main Goal** (10-year effort)

To maintain biodiversity and ecosystems of Sabah by developing a durable and holistic conservation system (with the third party's intervention - JICA).

- **Mode of Assistance**

1. **BBEC I (2002-2007):** Technology transfer in research & monitoring (focused on 4 agencies)
2. **BBEC II (2007-2012):** Policy support, development of an institutional & administrative system based on a local law (Sabah Biodiversity Enactment)
3. **JICA's role (ODA: bilateral assistance):** Linking international concepts and local activities & transferring knowledge into practice (theory & practice): CBD, Ramsar Convention, MAB, etc. ⁷

BBEC Phase II (2007-2012)
Tools & Instruments (strategies)

Implementation Strategies of the BBEC II

1. Full Implementation of the “Sabah Biodiversity Enactment 2000”

- Establishment of the **Sabah Biodiversity Centre** as a common platform for coordination (cross-sector approach)
- Seeking for synergy effect by working with the conservation-related agencies & avoiding duplication of work (effective conservation system)

2. Use international conventions (common goals)

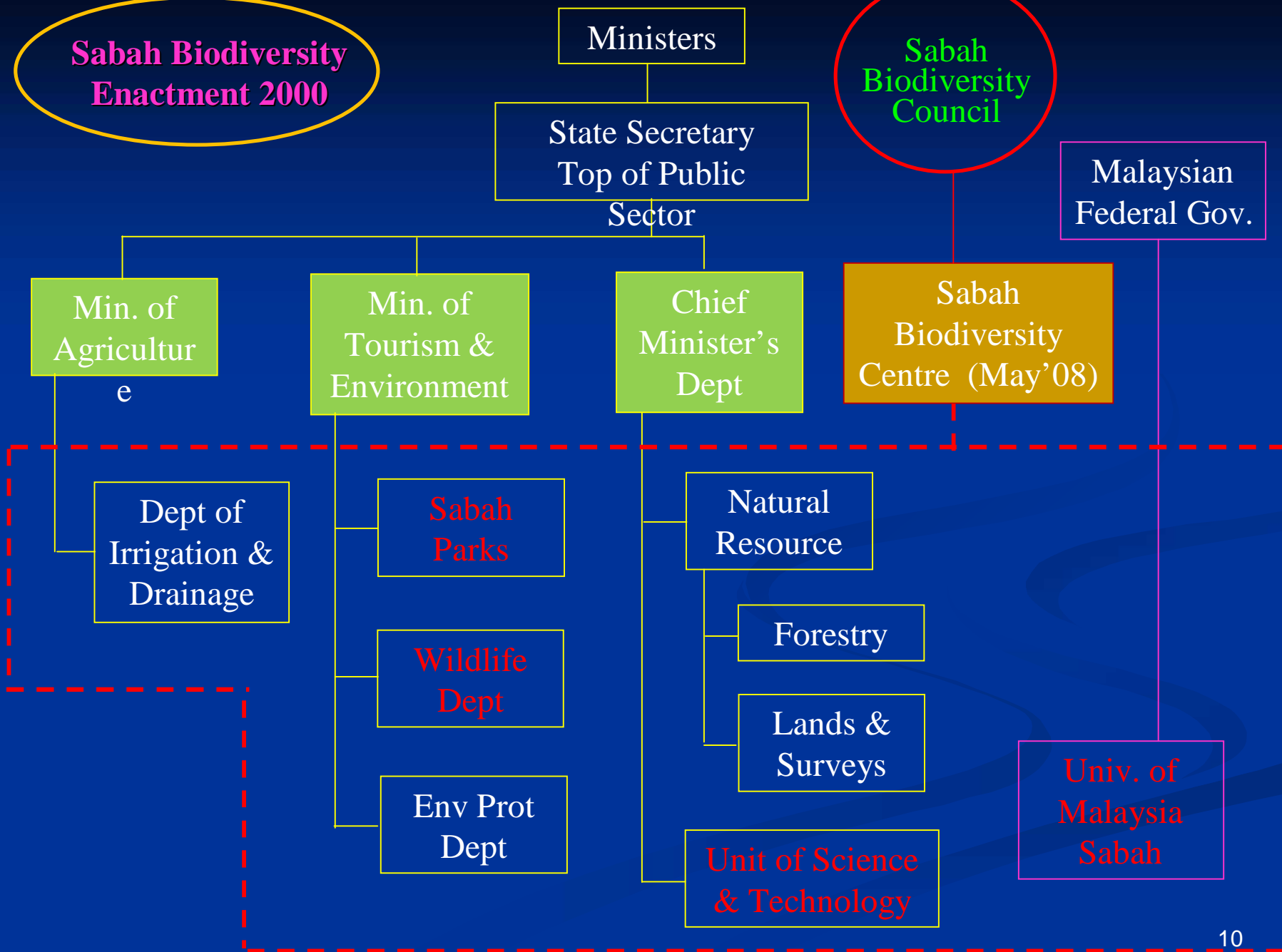
- Ramsar Convention, CBD (ABS: Access & Benefit Sharing), MAB (Crocker Range Park), etc.

3. Influential Action = Actor’s Power & Stakeholder’s Interest

- Legal basis, bilateral agreement (ODA) and international recognition

Sabah Biodiversity Enactment 2000

Sabah Biodiversity Council



Sabah Biodiversity Enactment 2000

- Sabah Biodiversity Council (high-power decision-making body)
 1. Chaired by the CM, Heads of Forestry, Wildlife, Sabah Parks, NRO, AG and WR
 2. To approve and issue access license (regulating access to the biological resources of Sabah)
 3. 1st meeting took place in December 2007 (BBEC II started in October 2007)
- Sabah Biodiversity Centre
 1. To function as the **Secretariat** for the Council
 2. One of the most important functions is **actual operation of the ABS**
 3. Established in May 2008

Kinabatangan-Segama Wetlands (78,000 ha): 1st Ramsar site, Sabah







proboscis monkey



Bornean pygmy elephant





- The Ramsar site is surrounded by development: Loss of biodiversity & bio-cultural diversity → Threat to the life of future generations
- **Local conservation governance** needs to be strengthened
→ JICA-BBEC II supports SaBC to coordinate a number of state agencies towards integrated conservation, making contributions to the 2010 Target (since 2002).

**Why do we study the native reserve in
Bundu Tuhan?**

**Significance of the *Satoyama* Initiative from
our BBEC experience in Sabah**

Kg. Bundu Tuhan Sabah, Malaysia



Documenting Traditional Ecological Knowledge (TEK) in ICCAs of Sabah

1. To develop an ABS system in Sabah

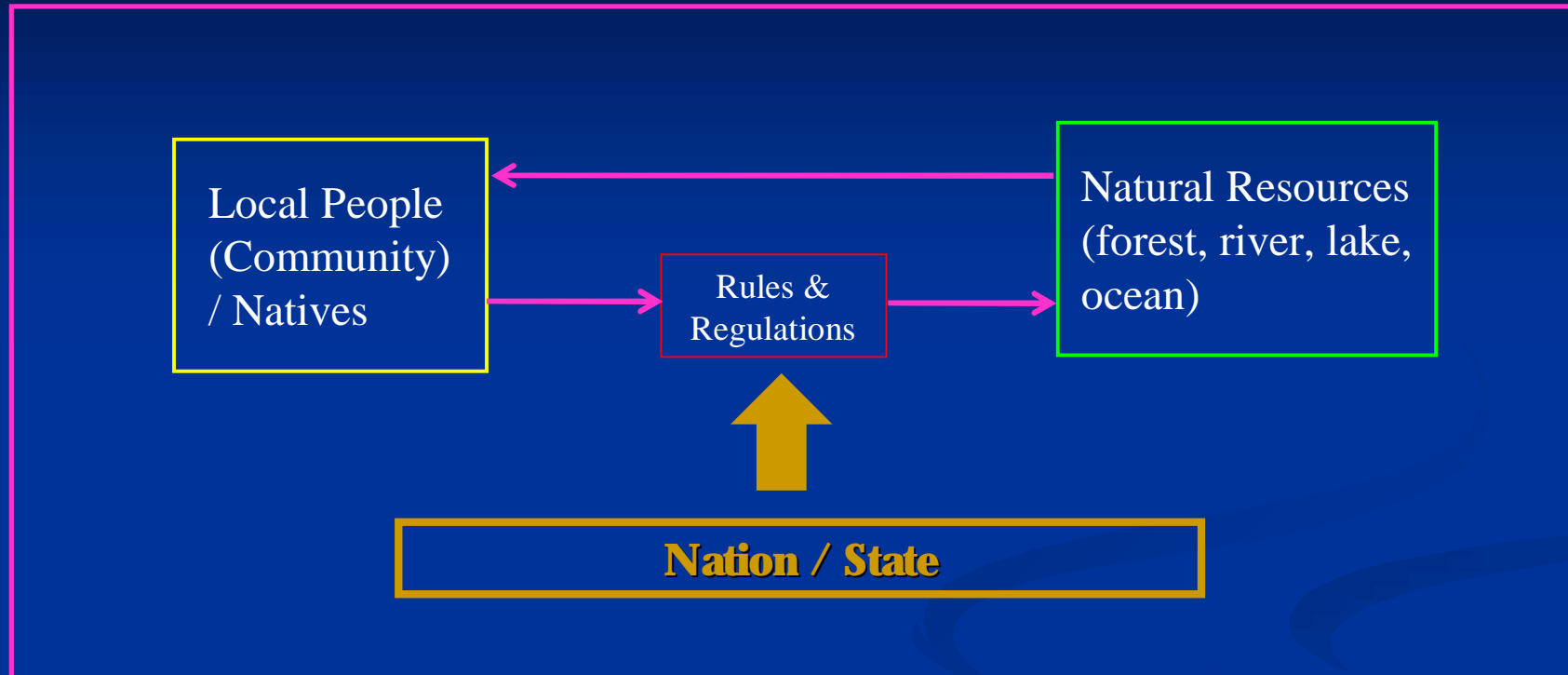
- Need to focus on the area with a good TEK on land / forest management
- Native reserves of Sabah (Bundu Tuhan)

2. ICCA (Indigenous Peoples' and Community Conserved Area) / ICT (Indigenous Conservation Territory)

- Local governance exists for sustainable use of natural resources (voluntary long-term collective efforts)
- Human intervention is an inevitable part of the ecosystem, maintaining bio-cultural diversity

Concluding Remarks

Satoyama can fit in a broad concept of Commons



- **Native Reserves** of Sabah → Land Ordinance to appoint a **trustee** to manage the land so that local governance exists (**ICCA**)
- *Satoyama* covers all forms of sustainable land use (human intervention) by families (kinship), private owners and others, with or without statutory rules.

Satoyama Initiative can be an **umbrella concept** for a long-term sustainable / traditional use of land, forest & natural resources (2010 Target & Beyond) by

1. Promoting a national policy on the protection of small-scale traditional subsistence use of natural resources
→ Poverty alleviation of the MDGs
2. Recognizing traditional human intervention is part of ecosystems
→ Ecosystem Approach of the CBD
3. Reassessing the importance of TEK
→ UN Declaration of the Rights of Indigenous Peoples (2007)
4. Promoting ABS using TEK as a new incentive for conservation
→ ABS of the CBD & Poverty alleviation of the MDGs

END

Thank you!



Bundu Tuhan Native Reserve

Mr. Sangau Joseph b. Sariman (Native Chief), Mr. Radin Louis Bin Madili (Village Chief), Mr. John Binty (Chairman of the Village Security and Development Committee), Mr. Johnny Ghani (Chairman)