

Community based ecosystem and biodiversity conservation: Lessons and findings from APFED activities

Asia-Pacific Regional Workshop
on the Satoyama Initiative Concept

“Ecosystem Services in the Asia-pacific Region”

Masanori Kobayashi
Coordinator and Senior Policy Researcher

1-3 October 2009
Penang, Malaysia

APFED

Asia - Pacific Forum for Environment and Sustainable Development

Overview

1. Background

Established in 2001 in pursuance with the recommendations adopted by the Ministerial Conference on Environment and Development in Asia and the Pacific held in Kitakyushu in 2000.

2. Members

26 prominent personalities of Asia and the Pacific, supported by int'l organizations (ADB, UNEP, UNU, UNESCAP, etc)

Late Mr. Ryutaro Hashimoto, former Prime Minister of Japan was Chairman of APFED (Phase I from FY2001 – 2004)

3. Objectives

To provide policy recommendations in pursuit of sustainable development in Asia and the Pacific.

Asia-Pacific Forum for Environment and Development (APFED) Second Phase
List of APFED Members
(as of January 2009)

Special Advisors

Noeleen Heyzer	Under-Secretary-General, United Nations and Executive Secretary, Economic and Social Commission for Asia and the Pacific
Haruhiko Kuroda	President, Asian Development Bank
Konrad Osterwalder	Under-Secretary-General, United Nations and Rector, United Nations University
Achim Steiner	Executive Director, United Nations Environment Programme

Steering Committee Members

Yoriko Kawaguchi	former Minister for Foreign Affairs and former Minister of the Environment (Japan)
Sanit Aksornkoae	President, Thailand Environment Institute (Kingdom of Thailand)
Vinya S. Ariyaratne	Executive Director, Sarvodaya Headquarters "Damsak Mandira" (Democratic Socialist Republic of Sri Lanka)
Greg Bourne	CEO, The World Wide Fund for Nature (WWF) Australia
Cielito Habito	Professor and Director, Ateneo Center for Economic Research and Development and former Minister of National Economic and Social Planning, Philippines (Republic of the Philippines)
Hironori Hamanaka	Chair of the Board of Directors, IGES (Japan)
Parvez Hassan	former Chairman of the International Union for Conservation of Nature and Natural Resources (IUCN) Law Commission (Islamic Republic of Pakistan)
Erdenebaatar Ichinkhorloo	Minister of Nature and Environment (Mongolia)
Nurlan Iskakov	Minister for the Environment (Republic of Kazakhstan)
Jeong Hoi-Seong	Chair Research Fellow, Korea Environment Institute (KEI) (Republic of Korea)
Kim Myung-Ja	President, IThinknet and former Minister of Environment, Republic of Korea (Republic of Korea)
Fritz Koshiba	Minister for Resources and Development (Republic of Palau)
Reza Maknoon	Advisor to the Vice-President and the Head of the Department of the Environment and Deputy Chairman, National Committee on Sustainable Development (Islamic Republic of Iran)
Akio Morishima	Special Research Advisor, IGES (Japan)
Tongroj Onchan	President, Mekong Environment and Resource Institute (Kingdom of Thailand)
Rajendra K. Pachauri	Director-General, The Energy and Resources Institute (Republic of India)
Emil Salim	Special Envoy of the President of the Republic of Indonesia (Republic of Indonesia)
Biman Chand Prasad	Professor and Dean of Faculty of Business and Economics, University of the South Pacific (Republic of the Fiji Islands)
Simon SC Tay	Chairman of the Singapore Institute of International Affairs (Republic of Singapore)
Hiroyuki Watanabe	Senior Technical Executive, Toyota Motor Corporation (Japan)
Wang Yuqing	President, Chinese Society of Environmental Science and former Vice Minister of State Environmental Protection Administration (People's Republic of China)

NetRes Institutes

Chinese Society of Environmental Science (CSES)	Institute for Global Environmental Strategies (IGES)
Korea Environment Institute (KEI)	Pakistan Sustainable Development Policy Institute (SDPI)
Singapore Institute of International Affairs (SIIA)	Thailand Environment Institute (TEI)
The Energy and Resources Institute (TERI)	University of the South Pacific (USP)

ASIA-PACIFIC FORUM FOR ENVIRONMENT AND DEVELOPMENT (APFED)

FINAL REPORT

*Paradigm Shift towards Sustainability for Asia and the Pacific
-Turning Challenges into Opportunities-*



Major output of APFED Phase I

<http://www.apfed.net>

Publications

- APFED I Final Report [w/o Flash ver.]
- Brochure  1.4MB

1. 107 policy recommendations, covering all the sectors,
2. Key suggested programmes for Phase II

- (i) Policy dialogue
- (ii) Knowledge Initiative
- (iii) Showcase Programme
- (iv) NetRes

The Ryutaro Hashimoto APFED Awards

Objective:

Promoting information dissemination of good practices in Asia and the Pacific

Criteria for evaluation

- ✓ Innovativeness
- ✓ Stakeholder participation and partnership development
- ✓ Cost-effectiveness
- ✓ Environmental and socio-economic impacts
- ✓ Long-term self-reliance

Performance

- ✓ 1 gold, 2 silver and 2 incentives have been given each year since 2006 ⁵

APFED Showcase Programme

□ Objectives

To support innovative policies and measures for sustainable development in Asia and the Pacific.

2. Management structure

IGES as APFED Secretariat

UNEP/ROAP as APFED Showcase Facility

NetRes institutes as advisory institutes

3. Activities undertaken so far

(1) About 12 projects approved each year since 2006

(2) Selected based on (i) innovativeness, (ii) applicability, (iii) effectiveness, (iv) feasibility and (v) sustainability. Plus, geographical and thematic balance,

(3) Final selection by APFED members of the APFED Showcase Panel

(4) Up to US\$30,000 grant provided,

Applications: APFED Award and Showcase Programmes

	2006	2007	2008	2009
Award	31	74	31	59
Showcase	106	288	354	191

2009 APFED Award Gold Prize

**Promoting the ingenious use of a plant invasive,
Lantana camara, to enhance the livelihood of the
forest dwelling communities in India**



**Ashoka Trust for Research in Ecology and the
Environment (ATREE)
Bangalore, India**


www.atree.org

Lantana spread



One of 10 worst invasive species in the world

ATREEE(2009)

Lantana has affected habitat quality for elephants and other animals

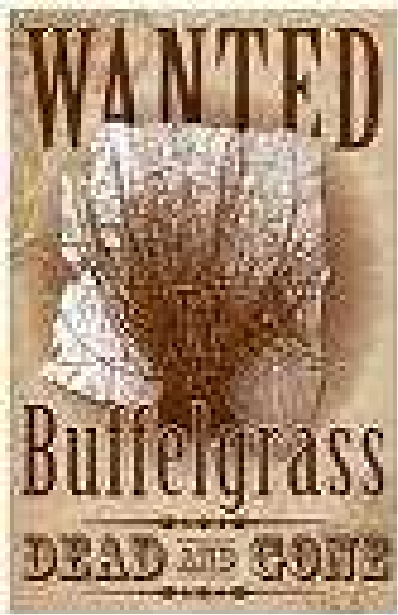


ATREEE(2009)

Impacts of invasive species

- ❑ **Ecological** : Biodiversity loss, habitat degradation
- ❑ **Ecosystem services**: water, pollinator and dispersal services etc
- ❑ **Economic**: direct and indirect, loss of productivity
- ❑ **Livelihood loss**: through loss of indigenous species



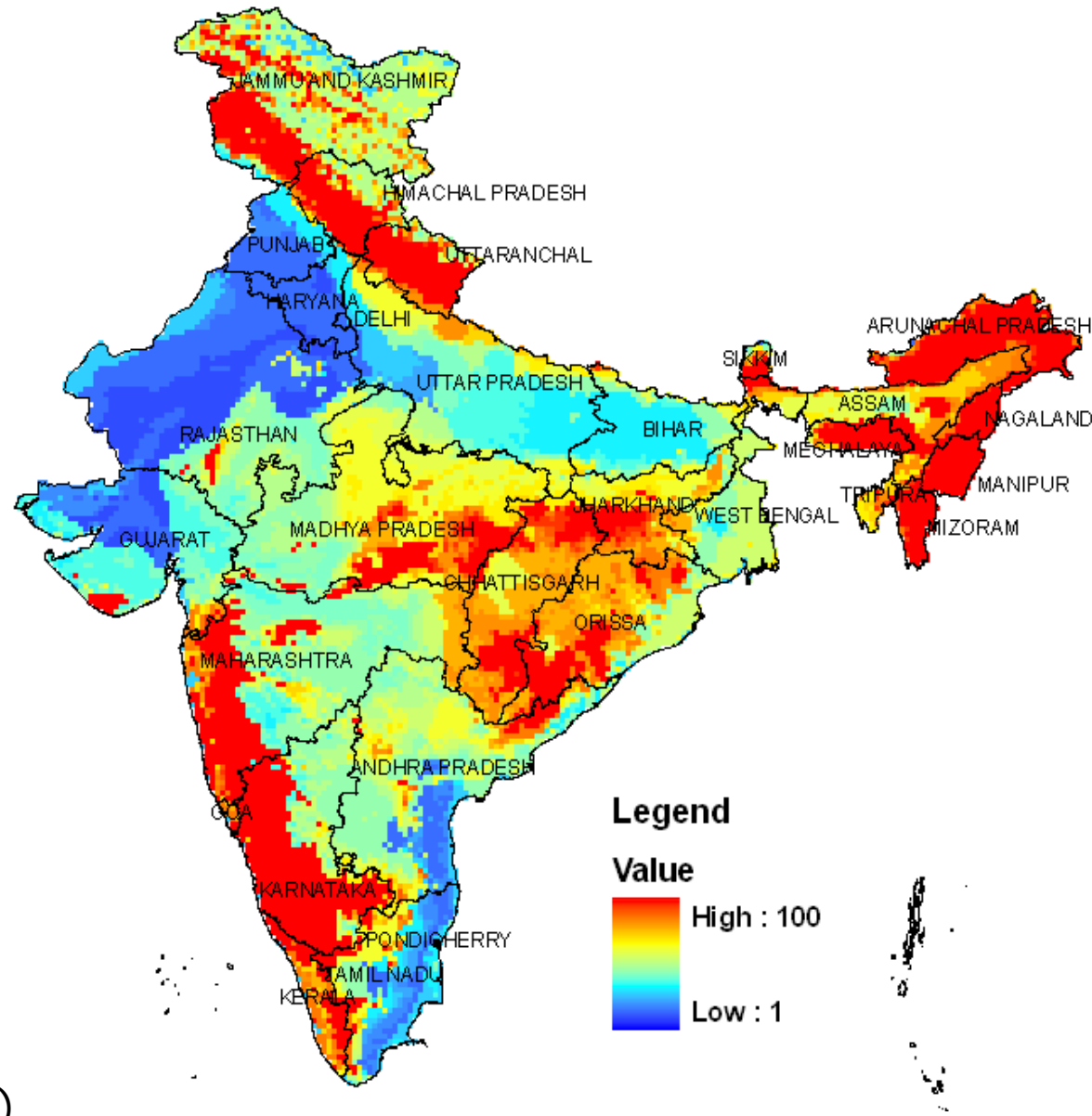


Beyond Control !!

Cost of controlling
invasive species =
\$137 billion per year
in US (Pimentel et al.
2000)

Clearly something not possible in
low GDP countries

Most of India is threatened with Lantana



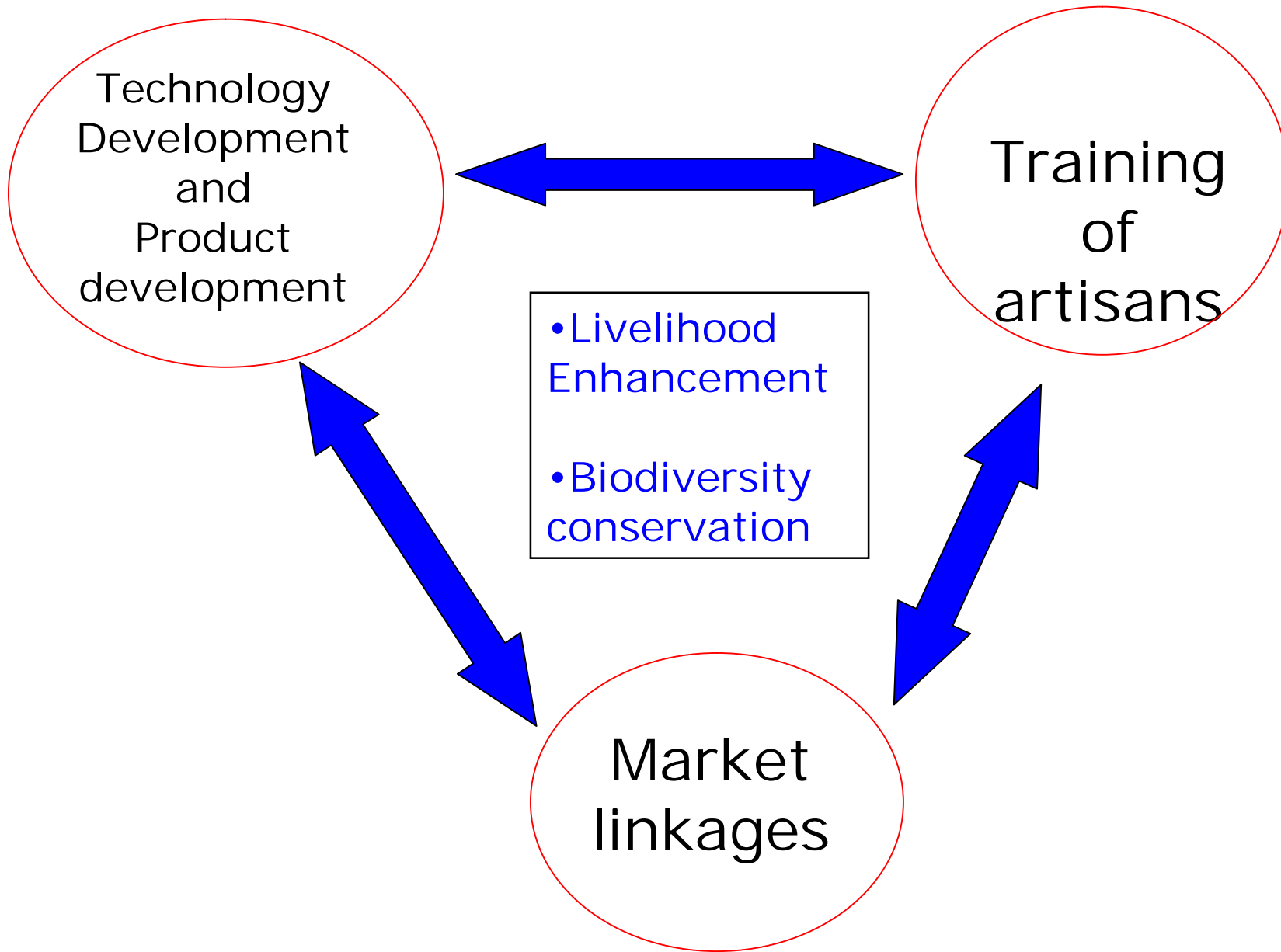
ATREEE(2009)

Promoting the use of Lantana by the forest dwelling communities in India



To enhance local livelihoods

To help restrict the spread of the invasive species



Implementation Process

Training of artisans



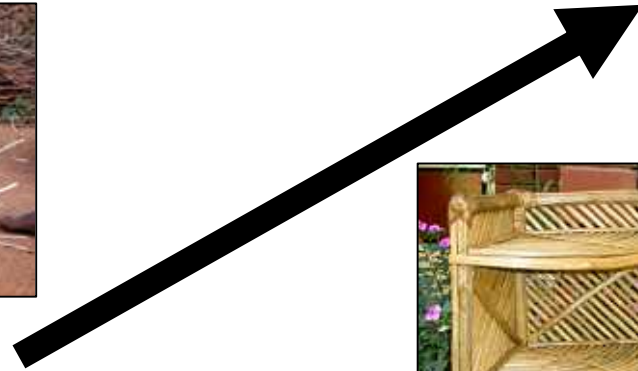
Establishment of Lantana Craft Centres



Product designing and evolution



Natham



HESCO



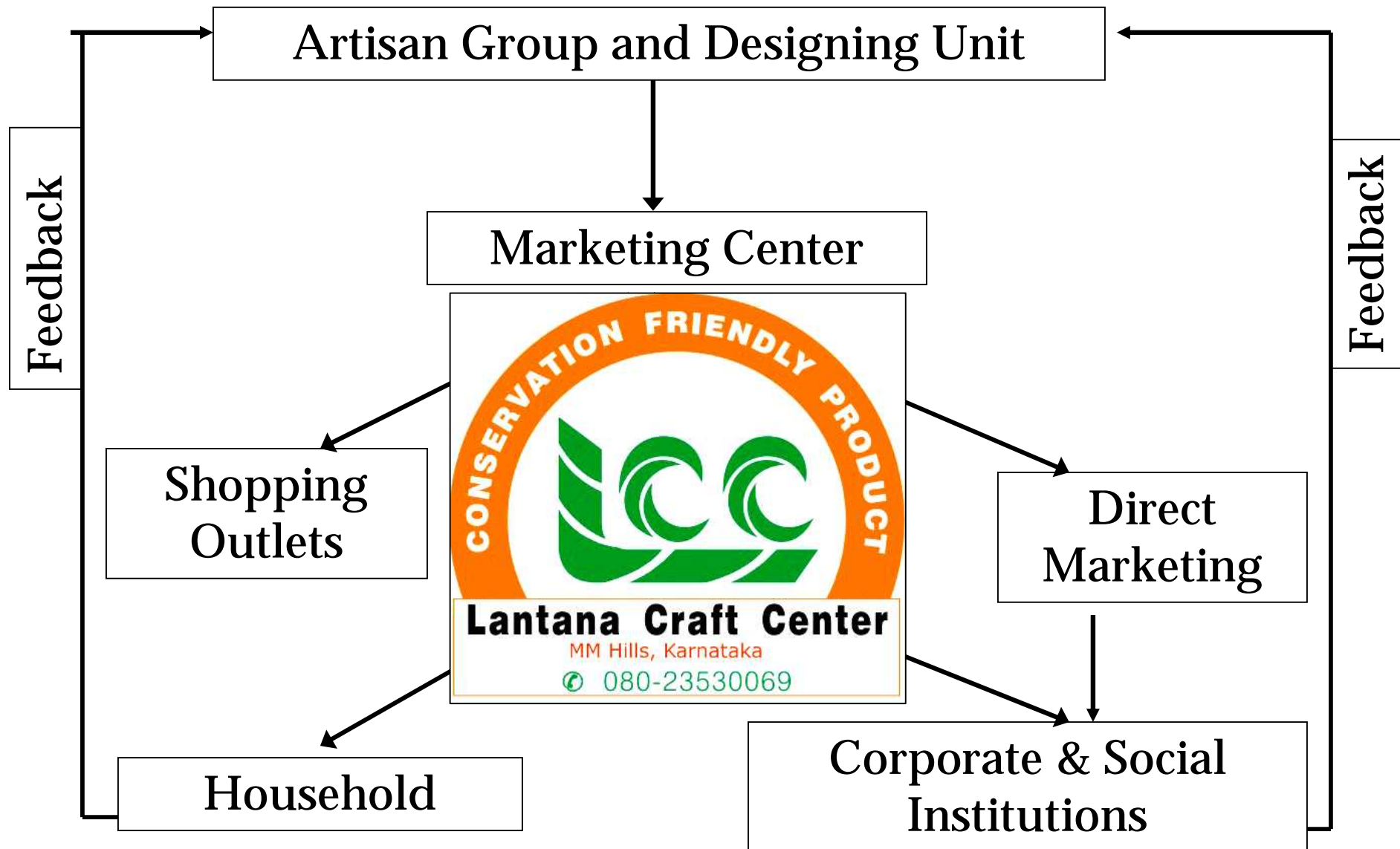
Chittoor



Boiling & Designing



Marketing Strategy



Exhibitions



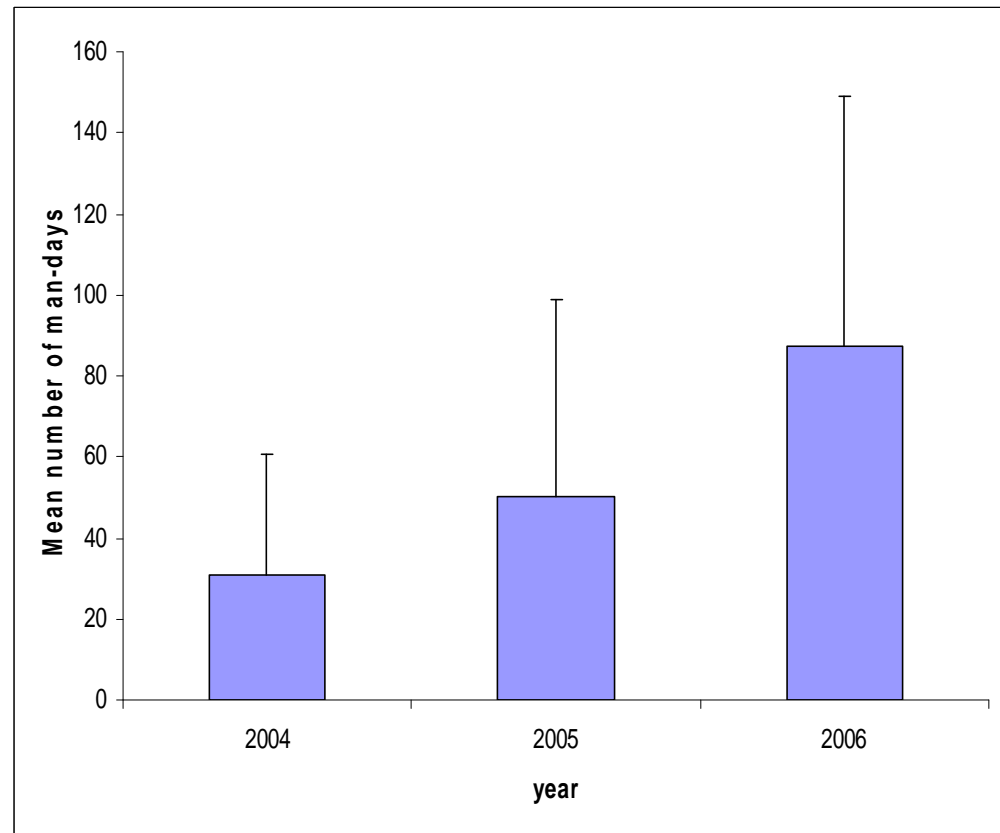
Lantana Community Meeting (Mela)



Artisans from four states
of India participated in
Lantana Mela-2005, 2006
2007 and 2008

Impact of Lantana on livelihood

- About 300 families trained in the use of Lantana
- Man-days employment has increased by 50 to 60%
- Average monthly income has increased by 100 percent



Raising indigenous plants for restoration planting





2008 APFED Award Gold Prize



Mitigation of the Effects of Carbon Dioxide and other Greenhouse Gases by Controlling Slash & Burn Farming

(Project Number: Nep/03/11)

For Conservation & Livelihood





Project Objectives

Overall Objective



- The main objective of the project is **to improve livelihood of tribal people** by introducing and expanding an **innovative conservation technique of natural resources** in the **slope land**. The innovative technique will consist of plantation of appropriate horticultural crops, fodder trees and medicinal plants along with the contour lines.

Specific Objective

- The specific objectives are:
 - a) **improved land productivity**
 - b) **enhanced cash income**
 - c) **reduced emission of greenhouse gases**
 - d) **minimized soil erosion**
 - e) **improved food security**





1. Income Driven, Users Friendly & Less Risky (Integrated) Technology



- Multi-tiers of fruits and fodders
 - Pineapples at the bottom (ground), banana and fodders at the top.
 - NTFPs, ginger or turmeric as intercrops
- Integration of goat enterprises

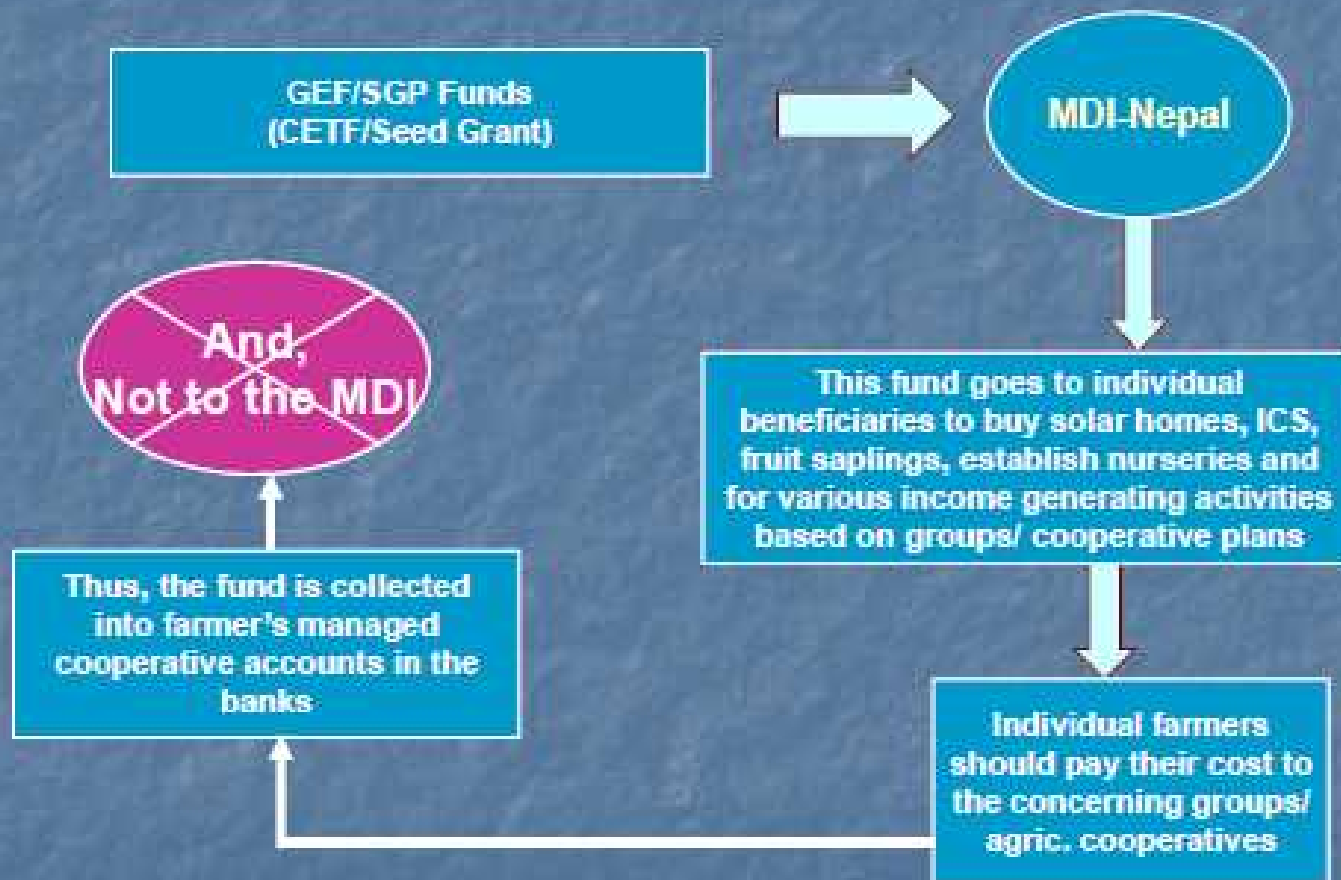


SGP The GEF
Small Grants
Programme





4. Revolving Fund Mechanisms





Output-1: Enhanced Community Participation

A total of 44 community organizations with 2293 members from 1,524 households directly benefited from the project.



Type of Institutions	Nos	Total HHs (Nos)				
		Total Mem bers	Chepang	Tamang	Dalits	Others
Agroforestry Management Committee (AMC)	8	1089	467	525	27	70
Saving Groups	30	819	181	420	121	97
Saving Cooperatives	3	245	103	116	0	26
Eco-club	3	140	35	80	12	13
Total	44	2293	786	1141	160	206



Output-2: Fund Generation

3.9 million fund generated & mobilized by CBOs



S.N	Institutions	Amount (Rs)	Source of Funds
1.	Agroforestry Management Committee (AMC)	880,830	CETF/Seed Grant Fund
2.	Saving & Credit Groups (SCG)	1,265,028	Saving
3.	Saving/Multi-purpose Agricultural Cooperatives	1,802,792	Saving, CETF, Seed Grant, Share Amount
	Total	3,948,650	

SGP The GEF
Small Grants
Programme



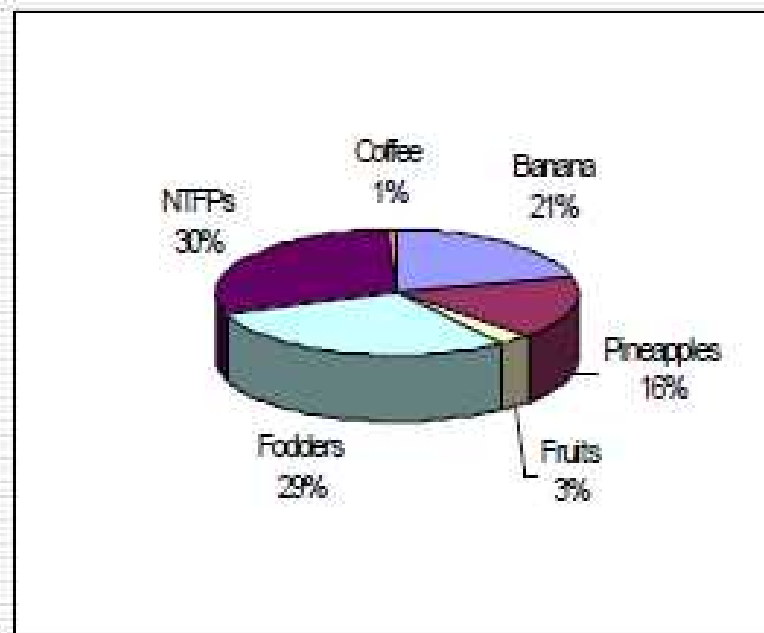


Output-3: Improved Agroforestry in Marginal Sloping Lands

438 ha. of Khoriya land rehabilitated by planting 924374 plants of different species



S. N	Crops	Total (Nos)
1.	Banana	193335
2.	Pineapple	148363
3.	Fruits	31371
4.	Fodders	265925
5.	NTFPs	278139
6.	Coffee	7241
	Total	924374





Output-4: Sustainable Living

A number of energy saving technologies adopted and utilized by the communities



S.N	Activities	Achievement
1.	Total Households	1007
	Solar Home	216
	Biogas	28
	ICS	749
	Water Turbine	5
	Bio-briquette Users	7
	Bee-keeping	2

SGP The GEF
Small Grants
Programme





Output-7: Increased Cash Income (US \$ 56,000)



S.N	Crops	Beneficiary HHs	Amount Earned (Rs)	Average Income (Rs/HH)
1.	Banana	408	3,046,193	7,466
	Banana Suckers	144	122,767	852
2.	Pineapple	67	135,560	2,023
	Pineapple Sucker	5	16,000	3,200
3.	Vegetables	187	807,417	4,317
4.	Kurilo (NTFP)	79	88,440	1,119
5.	Fodder Sapling	31	27,452	885
6.	Goat	302	447,510	1,482

SGP The GEF
Small Grants
Programme





Ryutaro Hashimoto APFED 2008 Award News Published in National Newspapers on July 18, 2008



SGP The GEF Small Grants Programme





**Improving Rural Livelihoods:
Promoting Sustainable and Safer
Vegetable Production**

2008 Ryutaro Hashimoto Award

Silver Prize Project

**World Vegetable Center and Bangladesh Agricultural
Research Institute**

Daily Star August 28, 2007



Growing concern over the negative effects of pesticides on health and the environment

Upazilla: Shahjahanpur,
District: Bogra

PHOTO: HASIBUR RAHMAN BI

A farmer collects vegetables from the same field while his companion sprays insecticide at Phultala in Shahjahanpur upazila under Bogra district yesterday, unaware of the health hazards such vegetables cause to consumers.

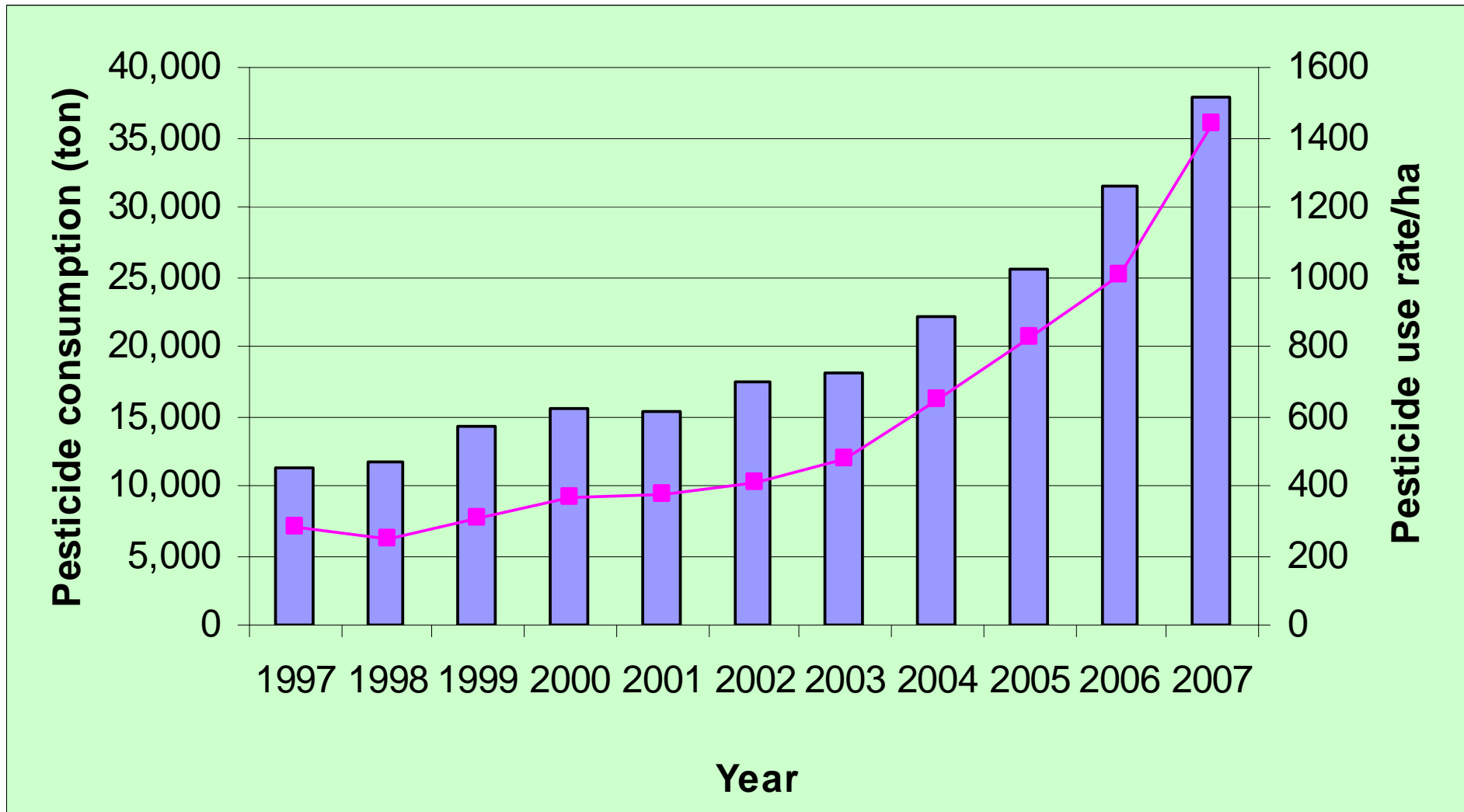
NEWS IN RTV, JANUARY 2008

Entrenched infection of vegetable by insets despite intensive application of synthetic pesticides

Farmers in Islampur, Jamalpur are seriously suffering from eggplant shoot and fruit borer infestation

- One farmers' harvest only 120 Kg healthy eggplant out of 2000 kg. Infestation rate by Egg plant Shoot & Fruit Borer (ESFB) was 94%.
- Even after spraying of cocktails of insecticides at two days interval

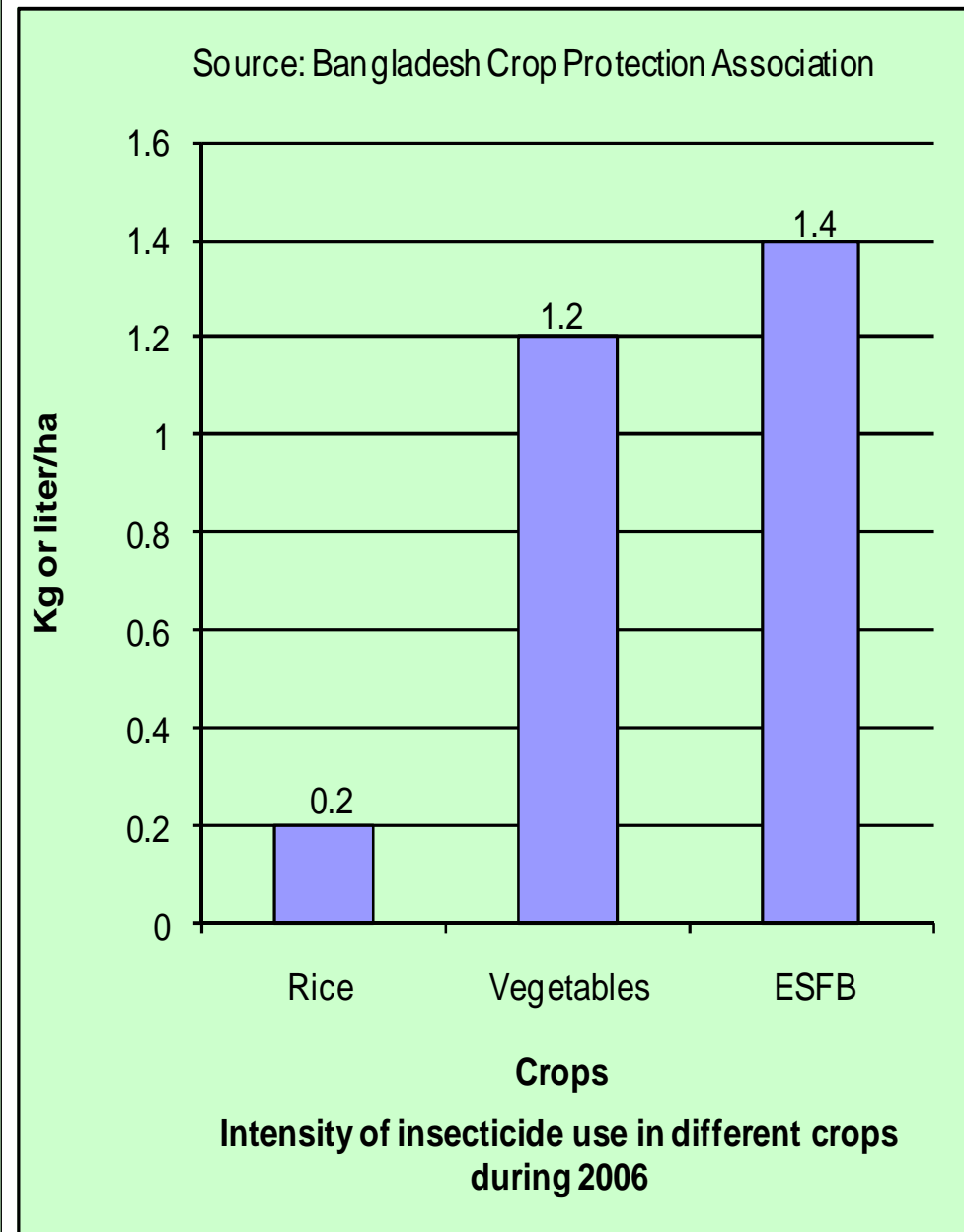
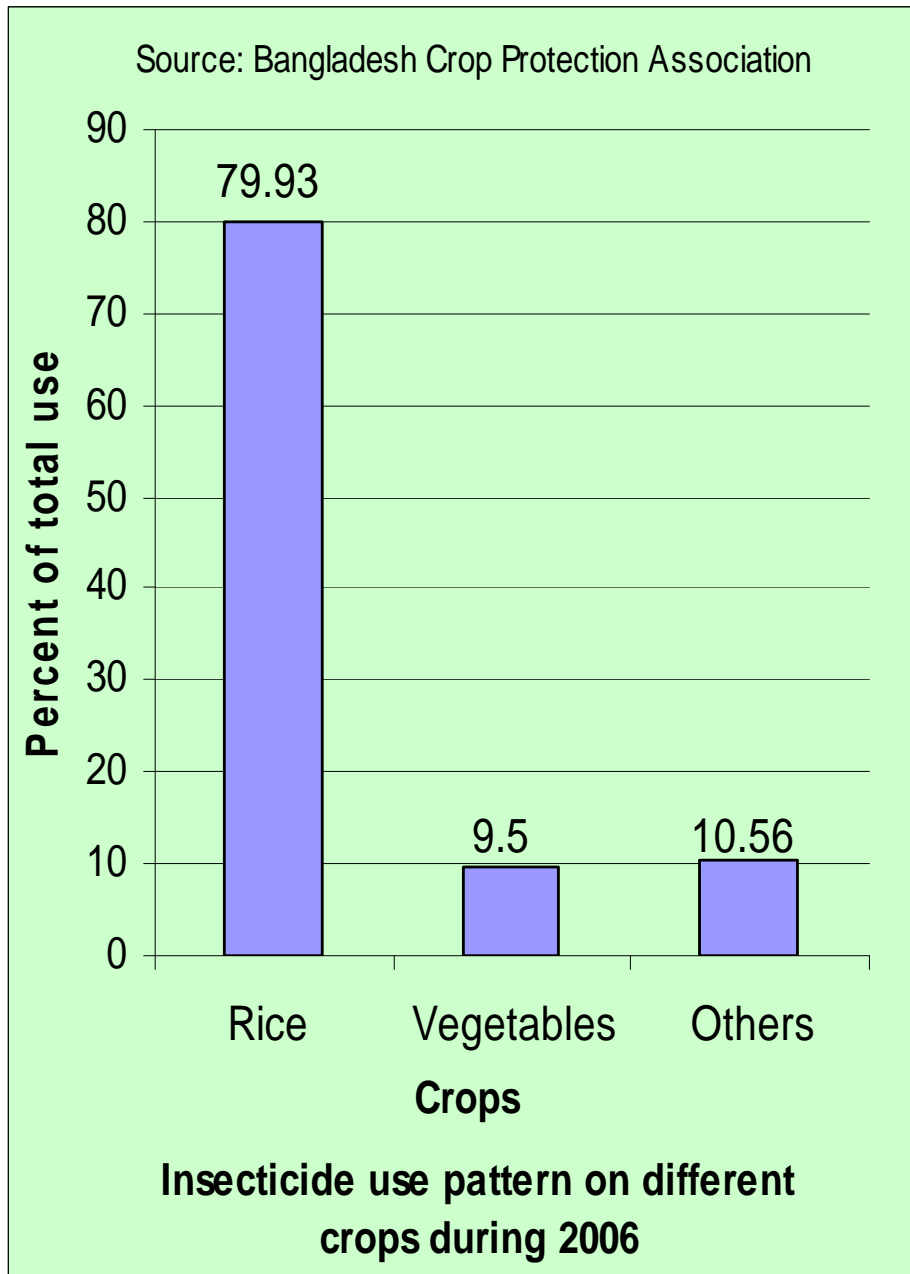


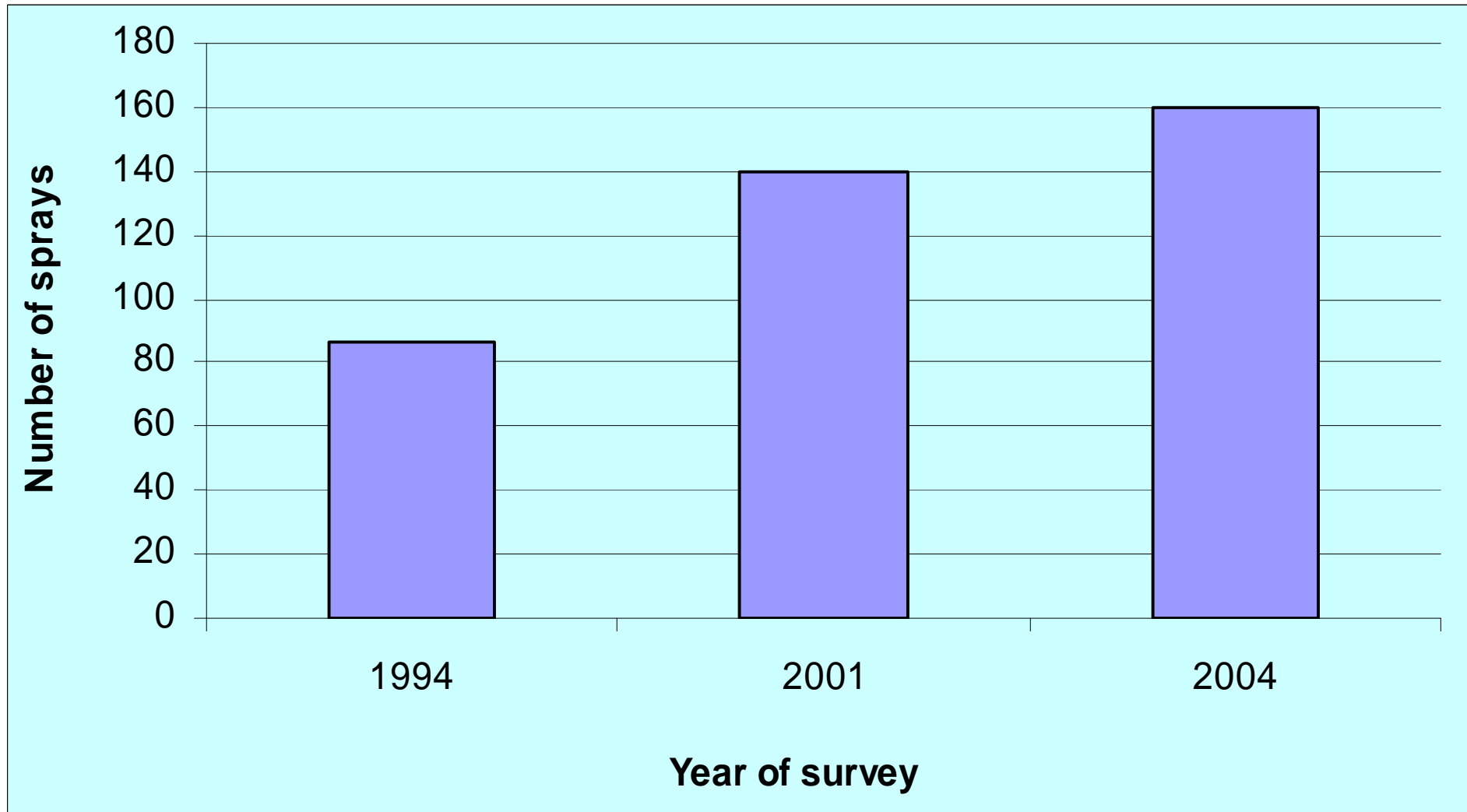


During 1997-2007, pesticide consumption increased 232% and per ha pesticide use increased 422%.

Year wise insecticides use pattern in Bangladesh


Intensive pesticide use in vegetable particularly eggplant





Increasing trend of insecticide spraying against ESFB in a cropping season of 5-6 months at Jessore

SEX PHEROMONE BASED MANAGEMENT OF ESFB



➤ Use female insect pheromone to attract male insects

➤ Insects drawn in water tank and killed

➤ No pesticide apply

Chemicals:

1. (E)-11-hexadecenyl acetate
2. (E)-11-hexadecen-1-ol

ESFB infestation in the IPM and Non-IPM fields at different locations

Pheromone or magic trap works

Locations	IPM Field			Insecticide Sprayed Field (Non-IPM)		
	% shoot infestation	% fruit infestation	Yield (t/ha)	% shoot infestation	% fruit infestation	Yield (t/ha)
Magura	1.12	4.68	43.86	9.37	19.75	22.27
Pabna	3.47	7.54	35.35	12.34	22.65	24.97
Jessore	5.33	11.67	38.57	30.67	41.37	18.75



Local production of ESFB pheromone



Local production of ESFB pheromone

Developing private business entities



Field efficacy of lures of different manufacturers

Treatments	Date wise trap catch				Mean	Price per lure (BDT)
	14/11/07	21/11/07	28/11/07	5/12/2007		
NRI, UK lure	5.00	5.75	15.00	19.50	11.31	100.00
SABL lure	3.75	9.00	12.00	16.00	10.19	20.00
BARI lure	5.75	10.75	11.25	14.75	10.63	20.00
NRI special	4.75	18.25	9.00	17.75	12.43	140.00
Agriland, India	5.75	15.75	11.00	12.50	11.25	55.00
Gonesh, India	2.50	8.25	7.00	6.00	5.75	26.00
Control	0	0	0	0	0.00	

Developing private business entities Undertaking training

Hands on training of
private
entrepreneurs on
sex pheromone
preparation



Linking with health issues

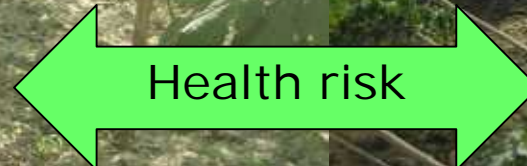
Hormone trap for integrated pest mgmt & reducing agro-chemical



Increased pesticides



Health risk



Ecosystem risk





Wildlife Friendly Ventures

Ibis Rice



“Innovation in policy and field actions for ecosystem management and biodiversity conservation”

Japan

Ashish John /

Karen Nielsen



Funders

- MDLF - on going



- APFED - 12 months



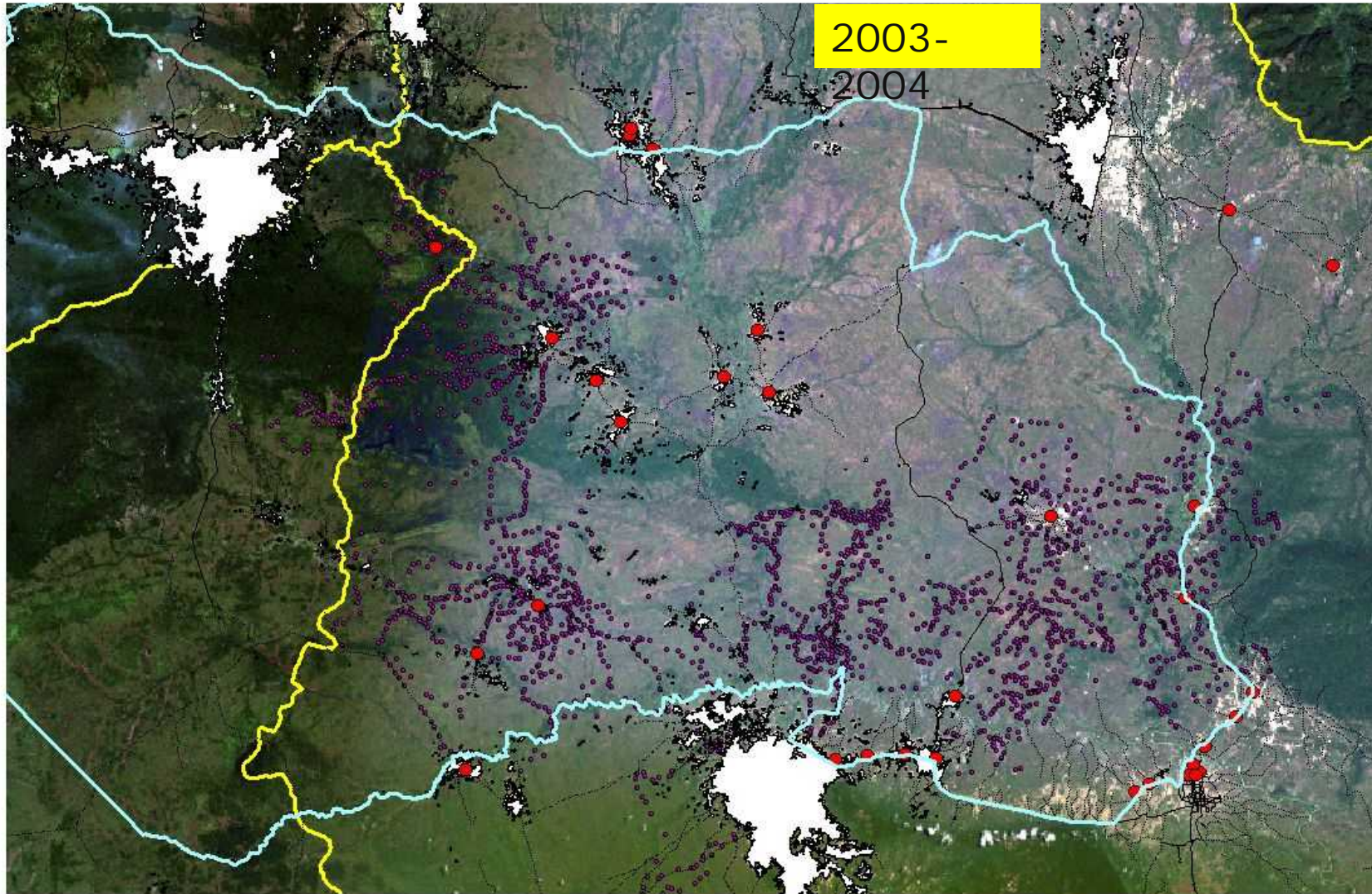
- Development Marketplace (World Bank) – 24 months



- UNDP/GEF



A Major Problem Preah Vihear: Land Clearance e.g



Forest conversion to rice farm depletes wildlife habitat

Ibis Rice (2009)



Unique community of birds:
5 Critically Endangered,
8 Endangered or Vulnerable, and
8 Near-threatened species
Including:
Large waterbirds: Giant & White-shouldered Ibis,
Greater & Lesser Adjutant, Sarus Crane, Black-necked Stork,
And:
3 species of Critically Endangered vultures



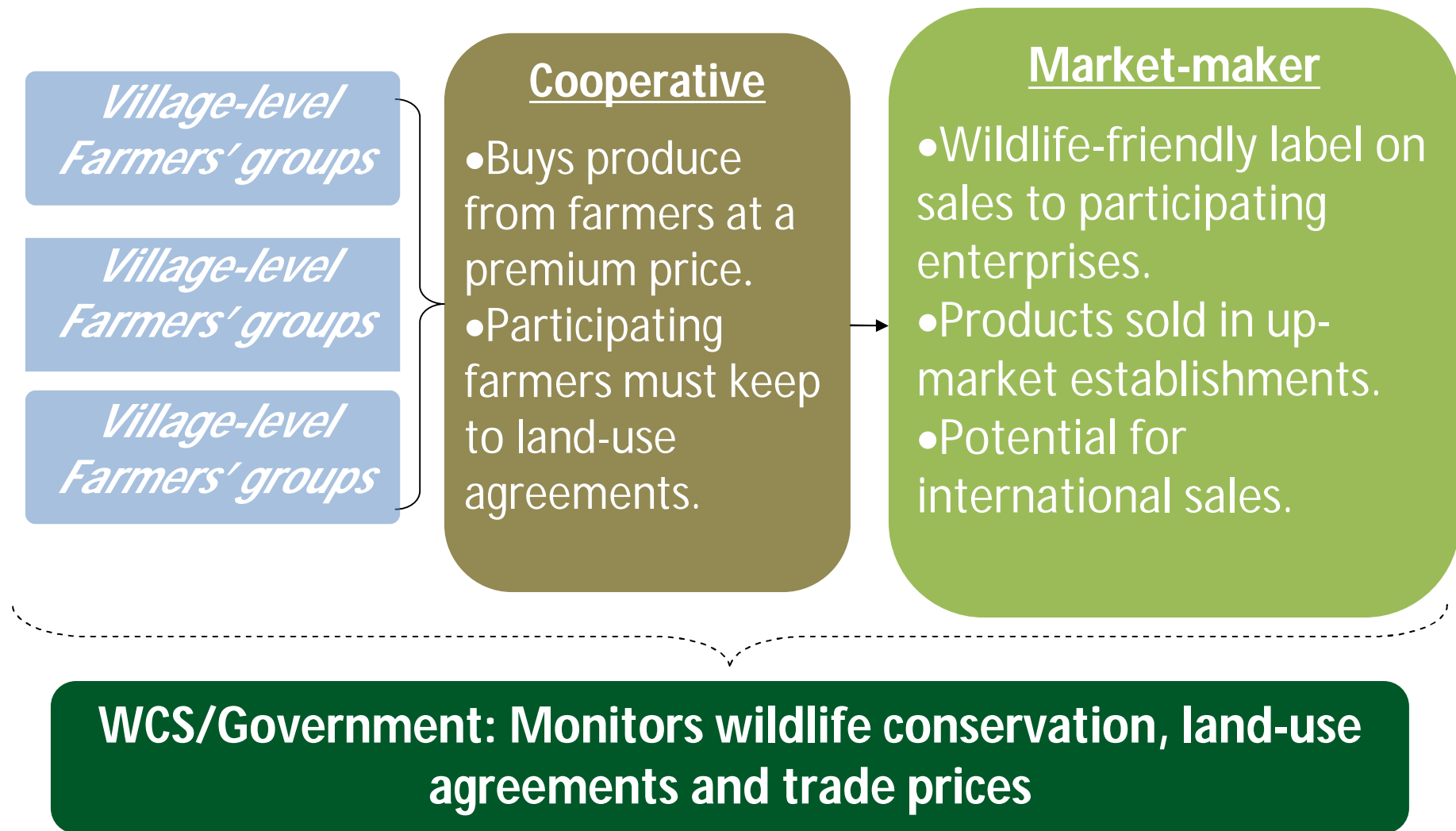


Globally Threatened Mammals:
8 Endangered
10 Vulnerable
8 Near-threatened or Data Deficient species
Including:
Tiger, Leopard, Asian Elephant, Eld's Deer
Dhole, Gaur, Banteng, Fishing Cat, Golden Cat, Silvered Langur, Pileated Gibbon

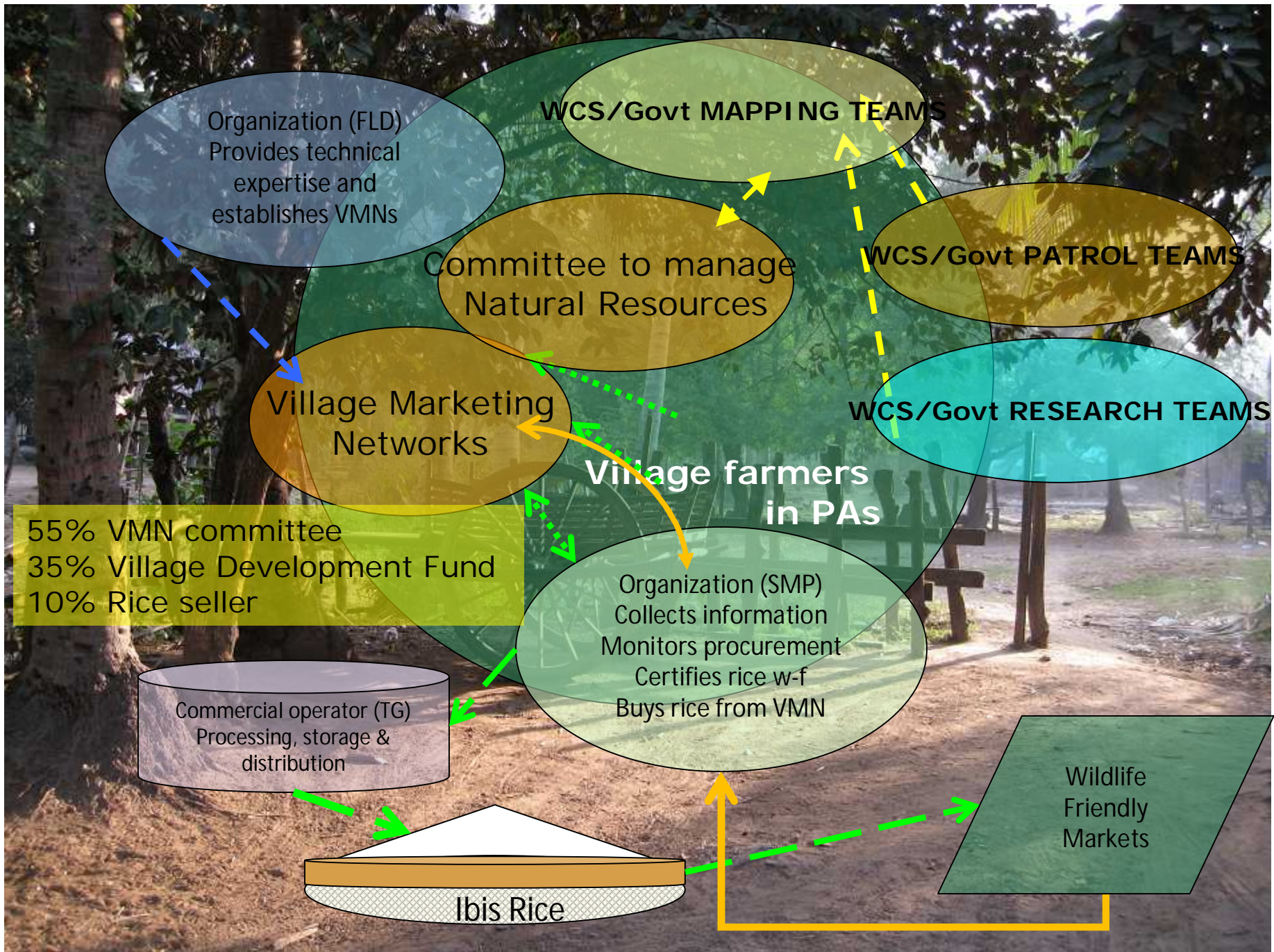


Ibis Rice (2009)

Overview







Achievements



Village Level Agreements

- ❑ VMNs have agreed no rice procurement from members who break rules and regulations.
- ❑ All members who have sold rice to or got seed from VMN have signed contract to follow rules and regulations.
- ❑ Rice procurement followed procedures and rice was not bought from 1 family that broke rules and did not want to sign agreement

Wildlife Friendly Certification

From: Wildlife Friendly Enterprise Network

- Global community
 - Conservationists
 - Businesses
 - Producers
 - Harvesters
- Dedicated to development of products that
 - Conserve threatened wildlife while
 - Contributing to the economic vitality of rural communities



Sharing the Planet

Available products



White rice 50 Kilo Sack



White rice 250 gm bag



250 gm bags produced by FLDs Young Women's Groups in villages

Ibis Rice (2009)

Enterprises Supporting Ibis Rice

Restaurants

- Common Grounds
- Kamasutra
- Sugar Palm
- V and A
- The Warehouse



Hotels

- Soria Moria
- River Garden
- Le Meridien
- Le Residence d'Angkor
- La Maison d'Angkor
- Shinta Mani



Phnom Penh – The Boddhi Tree

3, 375 kilos grade A (unbroken) rice sold

1, 850 kilos of grade B (broken) rice sold
Ibis Rice (2009)

La Résidence
d'Angkor

ORIENT-EXPRESS HOTELS
TRAINS & CRUISES



Ona Keto Community Reforestation Showcase Project

Kenn Mondiai

Partners With Melanesians Inc.

PO Box 1910, Port Moresby 121

National Capital District

Papua New Guinea



Ona Keto Peoples Foundation Inc.

PO Box 2028, Boroko 111

NCD - Papua New Guinea

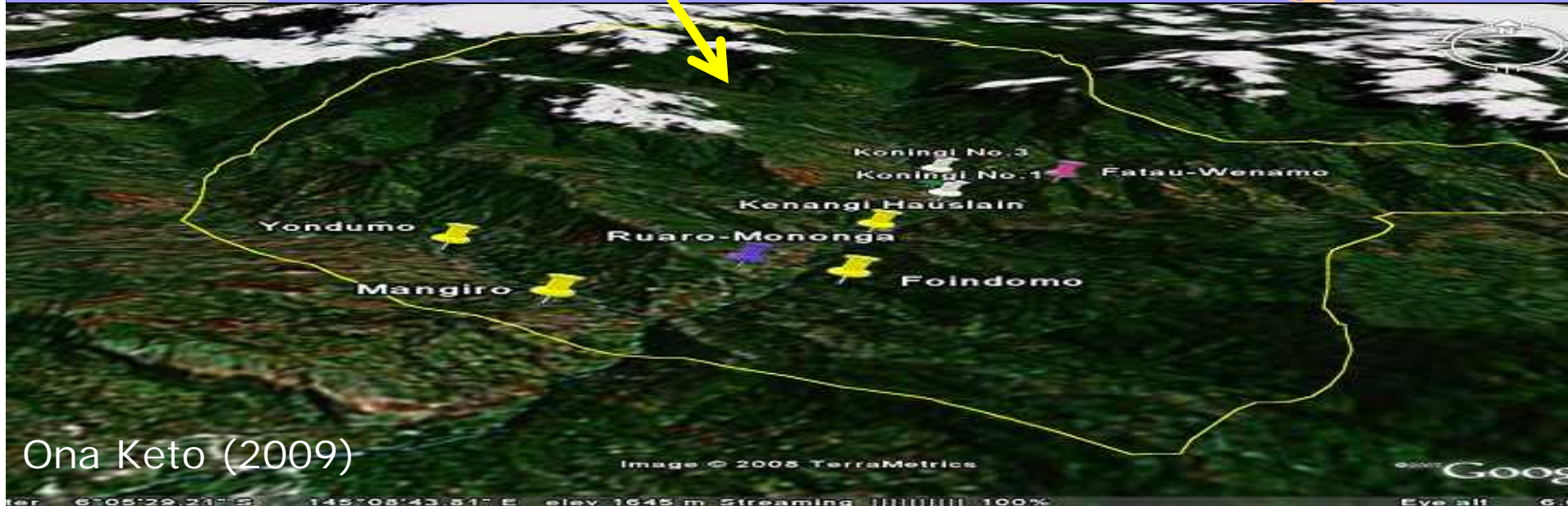
Tel : 675 3236344 or 675 6966175 Fax : 675 3236345

Reg. Office c/- Partners With Melanesians Inc.
09 Croton Street, HOHOLA - Section 36 Lot 003 - Port Moresby

Email : info@pwmpng.org.pg or kmondiai@pwmpng.org.pg

Project Area - Ona Keto Tribal Area, EHP

All the 10 villages are highlighted here, in total since 2004, OKPF with Technical Support from PWM have planted over 27,000 Pinus and Eucalyptus species in the ground.



Ona Keto (2009)

Image © 2005 TerraMetrics

Coog

The Challenges & New Idea

- ❑ Logging natural forest for 33 years with very little reforestation and afforestation of grassland areas.
- ❑ Local people very suspicious with Govt over their land..no secure tenure.
- ❑ Govt approach to reforestation + afforestation not attractive financially to local people.
- ❑ Approach creates more conflict amongst local people over land and benefit sharing.
- ❑ No new land secured by Forestry under this arrangements so far and is a major concern.

The New Idea

- So the new idea developed by PWM based on a experience with a pilot project in 2004
 - **Approach the project based on the peoples common environmental problems now.**
- People allocate their excess land not good for cash crop or food production.
- People to provide free labour on their own land.
- All land under dispute not be allocated to project..only with clear/free ownership
- Clans will have 100% ownership of the trees on their clan land.
- NGO to support with financial/technical assistance.
- Each village will have a committee (VRC) responsible for the project with their Association Board assisted by PWM.

Past Achievements to Date

□ Ona Kipiyufa Land Care Group setup

- Community mobilized
- Reforestation Committee formed
- Central Nursery built (10, 000 seedlings holding capacity)
- 4-5 Ha planted at 3 meter spacing

□ Yame Ifagu Clan Setup

- Committee/Executives formed
- Nursery Built
- Land allocated
- 6000 Seedlings ordered from PNGFA
- National Election disrupted project – suspended
- Seedlings not dispatched yet until conflict resolved

□ Keto Waboku Clan interested

- Applied to WWF for funding

Ona Keto (2009)

Pictures of the Community Reforestation Projects

Official launching of Ona Kipiyufa Land Care Group Reforestation Project and Central Nursery by National Forest Board of PNG – Kanawi Pouru - Acting NFB Chairman & Dike Kari – Acting MD at Kenangi village.



The Pinus trees planted by the Ona Keto Land care group, trees planted in 2004, now 3.5 years (2008 July)



Grassland fire continues to be a major



Ona Keto (2009)



PICTURES OF COMMUNITY REFORESTATION WORKSHOP



Ona Community Members during the UNEP/APFED Inception workshop in front of the "Hausman"

Remnants of Castanopsis forest at the side of grassland areas that is in danger of further degradation from fire and gardening that needs to be arrested by tree planting.



Ona Keto (2009)

Keto Women's Welfare Group, part of the forest remaining from fire that destroyed about 7000 seedlings of Pinus species planted in 2006 in the grassland areas

Problems

- ❑ Very little support by PNGFA
- ❑ Focused on grassland reforestation ...little forest restoration
- ❑ Technical support with training little
- ❑ POOR or NO response from PNGFA to provide technical assistance
- ❑ Comments on proposal and request for input not responded by PNGFA
- ❑ Reforestation Policy needs to be finalized and programmes rolled out.
- ❑ Land issues is still problems, dealing with those that People have suspicions over land issue
- ❑ Benefit sharing still unclear in people minds although explained fully
- ❑ Little skills to undertake land survey
- ❑ Transportation cost for seedlings high
- ❑ Need specialized skills in indigenous species
- ❑ PNGFA to be pro-active in doing extension work

**Result of GGF Pilot Project
2003-2006 Kenangi village**

Planted 4 HA of *Pinus and Eucalyptus species*



**WWF supported Keto Waboku clan in 2007
to plant 7HA of *Pinus***

**With UNEP/APFED Showcase, it is expected
the Ona Keto tribe will plant 182 HA of land
under this showcase project, but the
community allocated over 1250 HA, so they
will need additional support to plant the
other 1,068 HA of land.....?**

Philippines

Project Title: Promoting education for sustainable development through conservation and sustainable use of forest resources and empowerment of the Regional Center for Expertise in Education for sustainable Development in Cebu

Implementation Organisation: the University of the Philippines Visayas, Cebu College



Education for S.D project

Education Kits for
Univ & Schools

Multi-purpose resource
management in Camp

7

Paper making demonstration

Fruit tree seedling nurseries

Handcraft using
bamboo and rattan

Flower garden for bee keeping

Sewage treatment demonstration
using coconut shells

Mushroom making

Mosquito repeller of
neem and fallen leaves

Educational activities



Improving env & socio/economic conditions
in protected areas



Long term efforts

Developing a plan for reconstructing a guest house

Analysis on Dengue Fever Infliction

Micro-financing fund master plan

Eco-tourism development plan



Creating long-term self-reliant mechanism for RCE and community empowerment

Viet Nam

Project Title:

Sustainable Community Forestry and Poverty Reduction in Viet Nam – Linking Natural Resource Accounting of Ecosystem Services to Carbon Financial Markets

Implementing Organisation:

**Department of Science and Technology,
Ministry of Agriculture and Rural Development,
Vietnam**



**Project Site: Kien Lao Commune, Bac Giang Province
(120 km Northeast of Hanoi)**

Objective:

- 1. To develop a shared understanding among local people and governments regarding carbon**
- 2. To establish the natural resources accounting tools for sequestered carbon**
- 3. To provide benefit to local people from carbon (through CCX)**

Local stakeholders: Communities and local governments

Duration: - September 2008 (thd)

Outline of the project

➤ Capacity-building training

Institutional and local people capacity to enable knowledgeable participation in ecosystem services and carbon sequestration.

➤ Mapping commune parcels, land cover and reforestation areas.

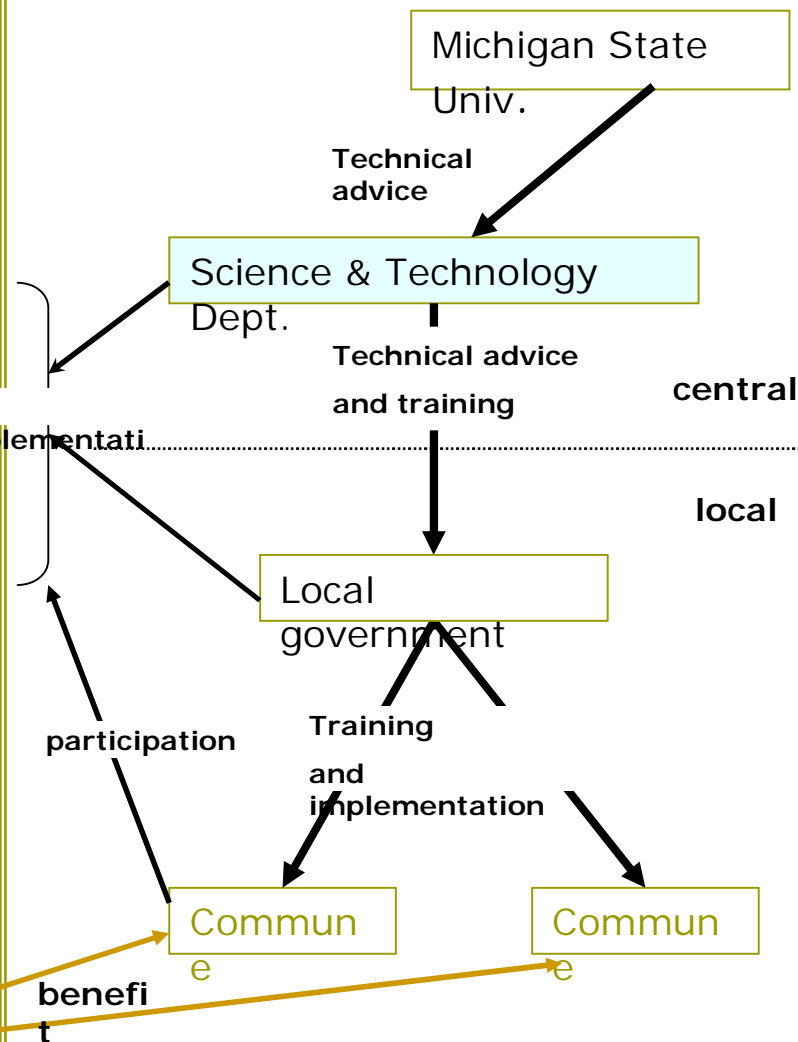
➤ Development Internet-based carbon registry

➤ Development carbon accounting tools

Constructing carbon cadastral map for each target sites and to track changes in carbon stocks

Using advanced technologies to measure and monitor carbon sequestration in target communities

Selling carbon under the trading structures.



Sri Lanka

Project title:

**Enhancing Productivity of Utilization of
Bio Energy**

Implementing Organisation:

**Practical Action (Intermediate
Technology Development Group)**

Project Site: Gurugoda, Nikewaratiya
(North Western Province)

Objective: To demonstrate a
community managed bio-
fuel plantation and field
tested extraction process

Local stakeholders: communities and
universities.
participation of local
government, environmental
authority of the province is
expected.

Duration: - September 2008 (tbd)

Demonstration of community managed bio-fuel plantation and field tested extraction process



Nursery was/will be established for produce oil bearing seeds, named "Jatropha" in selected villages

(four seeds will be produced and tested.) + Awareness raising activities

<involvement of communities>



Processing of bio-diesel and testing of an intermediate transport with auto-diesel and engines (currently literature review is underway)

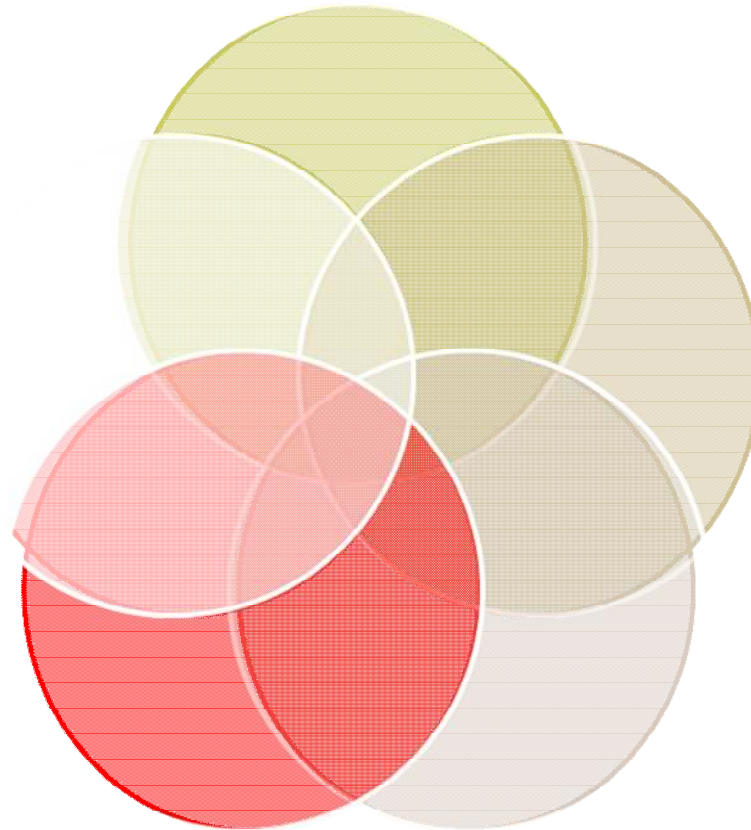
<technical supports from
...>

Factors for success

Policy mix
development

Financing
mechanisms

Technology



Passion

Incentives

Community based Multi-stakeholder collaboration



Suggestions for operationalizing *SATOYAMA Initiative (1)*

1. Community empowerment, poverty reduction, income generation should be an important part of the activities to be supported under the *SATOYAMA* Initiative in addition to ecosystem service and biodiversity conservation,
2. Useful to establish a mechanism to support research work, good practice analysis and information dissemination, and pilot projects,
3. Concessional financing mechanisms should be explored such as micro-credit and revolving funds,

Suggestions for operationalizing *SATOYAMA Initiative (2)*

4. Useful to establish a mechanism to support research work, good practice analysis and information dissemination, and pilot projects,
5. Concessional financing mechanisms should be explored such as micro-credit and revolving funds,
6. Useful to link *Satoyama* Initiative with relevant programmes such as CBD's post 2012 Biodiversity Target, and others related to climate change adaptation and co-benefit ,
7. Collaboration with existing programmes and networks remains vital



Asia-Pacific Forum for Environment and Development

[HOME](#)

[About APFED](#)

[APFED II \(2005-\)](#)

[Plenary Meetings](#)

[Policy Dialogue](#)

[Knowledge Initiative](#)

[Awards](#)

[Good Practice](#)

[Showcase](#)

[NetRes](#)

[APFED I \(2001-2004\)](#)

[Links](#)

[Contact](#)

Asia-Pacific Forum for Environment and Development (APFED), a regional group of eminent experts operating since its establishment in 2001, aims to address critical issues facing Asia and the Pacific region and to propose new models for equitable and sustainable development of the region.

[Plenary Meetings](#)

APFED II Fourth Plenary Meeting

The APFED II Fourth Plenary Meeting was held at Waterfront Insular Hotel, Davao, Philippines from 25 - 26 July 2008. The Meeting was sponsored by the Ministry of the Environment, and co-organised by the Department of Environment and Natural Resources (DENR), Philippines, Davao City Government and the Institute for Global Environmental Strategies (IGES) in collaboration with Earth Council Asia-Pacific. [more](#)



[Policy Dialogue / Knowledge Initiative / Showcase](#)

APFED Showcase Programme

A grant of up to US\$30,000 will be provided under the programme to support the showcasing of innovative policies, approaches, measures and actions for promoting sustainable development in



Call for applications for The 2009 Ryutaro Hashimoto APFED Awards

The call for applications for the 2009 Ryutaro Hashimoto APFED Awards is now launched. The deadline for submission is 31 May 2009, 5 pm Tokyo time.

APFED Policy Dialogue on Biodiversity

APFED Policy Dialogue on "Conserving biodiversity and promoting sustainable development - Key agenda for the CBD/COP10 in 2010 and future challenges-" was held on 25 January 2009, Tokyo, Japan



2008 showcase projects were selected

The 13 proposals were selected from more than 350 entries received

