



GLOBAL ENVIRONMENT FACILITY  
INVESTING IN OUR PLANET

[www.theGEF.org](http://www.theGEF.org)

## GEF's Experience in Mainstreaming Biodiversity into Production Landscapes and Seascapes: Potential Collaboration



Yoko Watanabe  
Program Manager &  
Senior Biodiversity Specialist  
GEF Secretariat

Global Workshop on  
the Satoyama Initiative  
29-30 Jan 2010, Paris, France

# Overview of Presentation

## 1. Introduction

What is the GEF?

Investments and Key Achievements

GEF Strategies

## 2. GEF's experience in mainstreaming biodiversity into production landscape/seascape and sectors

Project examples:

## 3. Potential synergies and collaboration with the Satoyama Initiative



**GLOBAL ENVIRONMENT FACILITY**  
INVESTING IN OUR PLANET



## What is the GEF?



A financial mechanism established to protect the global environment and promote sustainable development.

GEF supports developing countries and economies in transition on incremental cost of actions to protect the global environment.

Financial mechanism for the CBD, UNFCCC, UNCCD, and POPs.

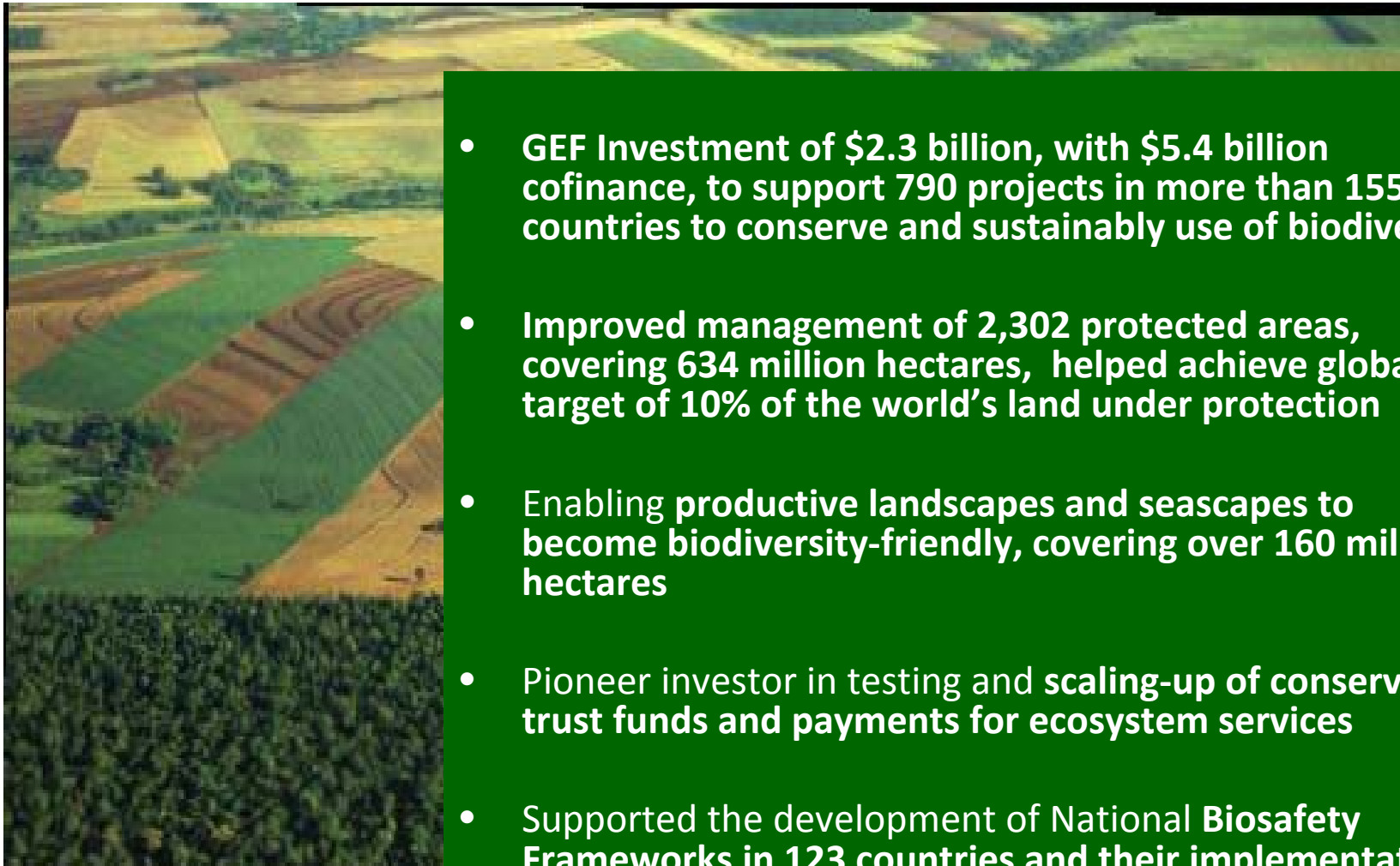
GEF's Six Focal Areas: Biodiversity, Climate Change, Int'l Waters, Ozone depletion, Land degradation, and POPs.



**GLOBAL ENVIRONMENT FACILITY**  
INVESTING IN OUR PLANET

[www.theGEF.org](http://www.theGEF.org)

# Biodiversity: Investments and Key Achievements



- GEF Investment of \$2.3 billion, with \$5.4 billion cofinance, to support 790 projects in more than 155 countries to conserve and sustainably use of biodiversity
- Improved management of 2,302 protected areas, covering 634 million hectares, helped achieve global target of 10% of the world's land under protection
- Enabling productive landscapes and seascapes to become biodiversity-friendly, covering over 160 million hectares
- Pioneer investor in testing and scaling-up of conservation trust funds and payments for ecosystem services
- Supported the development of National Biosafety Frameworks in 123 countries and their implementation



**GLOBAL ENVIRONMENT FACILITY**  
INVESTING IN OUR PLANET

[www.theGEF.org](http://www.theGEF.org)

## GEF's Grant Schemes

### Biodiversity Investment:

FY2007-2010, approx \$1 billion

### Grant sizes:

- Full-size project (above \$1 million)
- Medium-size project (below \$1 million)
- Small Grants Program (max \$50000)

### Grant modalities:

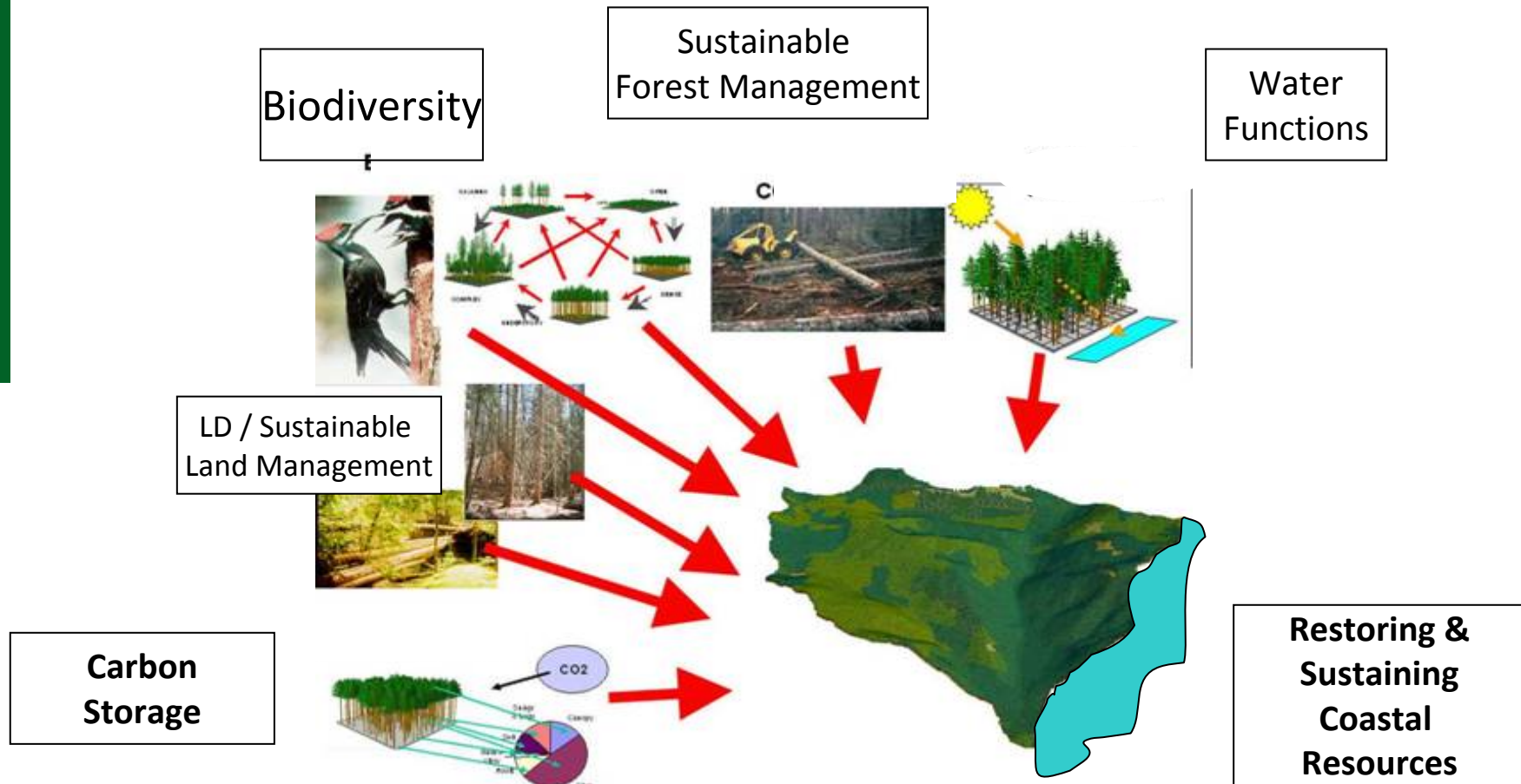
- Country, Regional and Global level Projects
- Programmatic Approach (i.e. umbrella program framework with sub-projects)



GLOBAL ENVIRONMENT FACILITY  
INVESTING IN OUR PLANET

[www.theGEF.org](http://www.theGEF.org)

# The Multiple Dimensions of Natural Resources Management



**GLOBAL ENVIRONMENT FACILITY**  
INVESTING IN OUR PLANET

[www.theGEF.org](http://www.theGEF.org)

# GEF's Biodiversity Program: Goals and Strategic Objectives



**Goal: Conservation and sustainable use of biodiversity and the maintenance of ecosystem goods and services**

## Objectives

1. Improve Sustainability of Protected Area Systems
2. **Mainstreaming Biodiversity Conservation and Sustainable Use in Production Landscapes/ Seascapes and Sectors**
3. Build capacity for the implementation of the Cartagena Protocol on Biosafety
4. Capacity Building on Access and Benefit Sharing



**GLOBAL ENVIRONMENT FACILITY**  
INVESTING IN OUR PLANET

[www.theGEF.org](http://www.theGEF.org)

# Mainstreaming Biodiversity in Production Landscapes/Seascapes and Sectors

- Strengthening the policy and regulatory framework (e.g. agriculture, fisheries, forestry, etc) to incorporate biodiversity,
- Fostering markets for biodiversity goods and services (e.g. PES, certification, etc) for conservation and sustainable use of biodiversity.



**GLOBAL ENVIRONMENT FACILITY**  
INVESTING IN OUR PLANET

[www.theGEF.org](http://www.theGEF.org)



# Integrated Approach: GEF's Sustainable Land Management & Sustainable Forest Management Programs

## Sustainable Land Management

1. Maintain or improve flow of agro-ecosystem services to sustaining the livelihoods of local communities
2. Generate sustainable flows of forest ecosystem services in drylands, including sustaining livelihoods of forest dependant people
3. Reduce pressures on natural resources from competing land uses in the wider landscape
4. Increase capacity to apply adaptive management tools in SLM

## Sustainable Forest Management

- 1.Reduce pressures on forest resources and generate sustainable flows of forest ecosystem services.
- 2.Strengthen the enabling environment to reduce GHG emissions from deforestation and forest degradation and enhance carbon sinks from LULUCF activities.



## Synergies with Satoyama Initiative

- Landscape and seascape level approach for biodiversity conservation and sustainable use.
- Mainstreaming biodiversity in production sectors, such as forestry and agriculture.
- Bio-cultural approach using traditional knowledge for biodiversity conservation and sustainable use (e.g. indigenous peoples and gender).



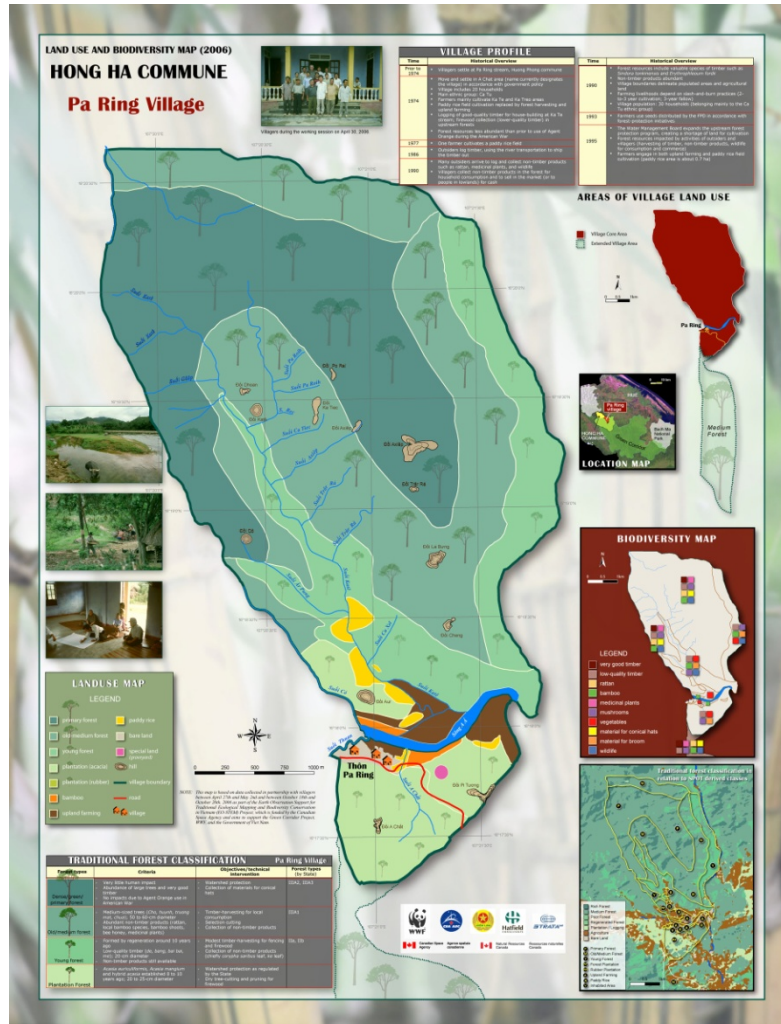
## GEF Projects related to the Satoyama Initiative

During GEF4 (2007-2010), about 80 out of total 200 projects were mainstreaming projects.

- Production Land/Seascape level projects
- Production sector level projects: Agro-biodiversity, fisheries, tourism projects (e.g. GIAHS, Costa Rica PES, etc)
- Projects involving Indigenous Peoples and Traditional Knowledge
- Community-based projects
  - Small Grants Program
  - Critical Ecosystem Partnership Fund (CEPF)



# Projects at the Landscape level: The Green Corridor Project in Vietnam



Create a landscape corridor through a mosaic of land use, including protected area, forest, and farming in Central Vietnam, which also help create resilient ecosystems and livelihood opportunities for local people.

- Strengthen national policy, regulations and capacities for forest management .
- Improve incentives for forest management, including community-based micro-enterprises and certification schemes.
- Establish a participatory monitoring and evaluation system

## Projects with Production Sector:

### Mainstreaming agro-biodiversity conservation into the farming systems of Ethiopia

#### Project objective:

- Provide farming communities with incentives (policies, capacity, markets and knowledge) to mainstream conservation of agro-biodiversity.

#### Project components

- Policy and Institutional Framework for In Situ Conservation of agro-biodiversity.
- Markets for agro-biodiversity friendly products promote farmer uptake.
- Crop Wild Relatives are conserved in in-situ gene banks (set side areas) that continue to provide “breeding ground for agro-biodiversity”



**GLOBAL ENVIRONMENT FACILITY**  
INVESTING IN OUR PLANET

[www.theGEF.org](http://www.theGEF.org)

# Projects with Indigenous Communities: Integrated Ecosystem Management Project in Central America

## Project Objective

To achieve effective conservation of biodiversity and natural resources in Central American countries by strengthening the capacity of indigenous communities to protect and manage their natural and cultural resources, rescuing and reinforcing traditional land use practices they have developed over centuries.



## Project components

- Establish a network of indigenous communities and build organizational and institutional capacity;
- Promote exchanges between indigenous communities on traditional knowledge etc;
- Consolidating culturally based sustainable natural resource management practices and sustainable land use;
- Supporting projects for sustainable production, promotion and marketing of traditional products, environmental services and eco/ethno-tourism.



**GLOBAL ENVIRONMENT FACILITY**  
INVESTING IN OUR PLANET

[www.theGEF.org](http://www.theGEF.org)

## Community-based Projects



- GEF Small Grants Program
- Critical Ecosystem Partnership Fund

Partnership fund for Hotspots conservation (over \$200 million)

- Government of Japan
- L' Agence Française de Développement,
- Conservation International,
- Global Environment Facility
- MacArthur Foundation, and
- The World Bank



**GLOBAL ENVIRONMENT FACILITY**  
INVESTING IN OUR PLANET

[www.theGEF.org](http://www.theGEF.org)

## A Unique Partnership

- 18 investment strategies implemented (51 countries)
- \$113.8 million in grants awarded;
- \$221 million in matching funds provided by grant recipients
- 1,500 civil society groups supported



***As part of the current 5-Year Vision  
Biodiversity conservation integrated into  
landscape & development planning***

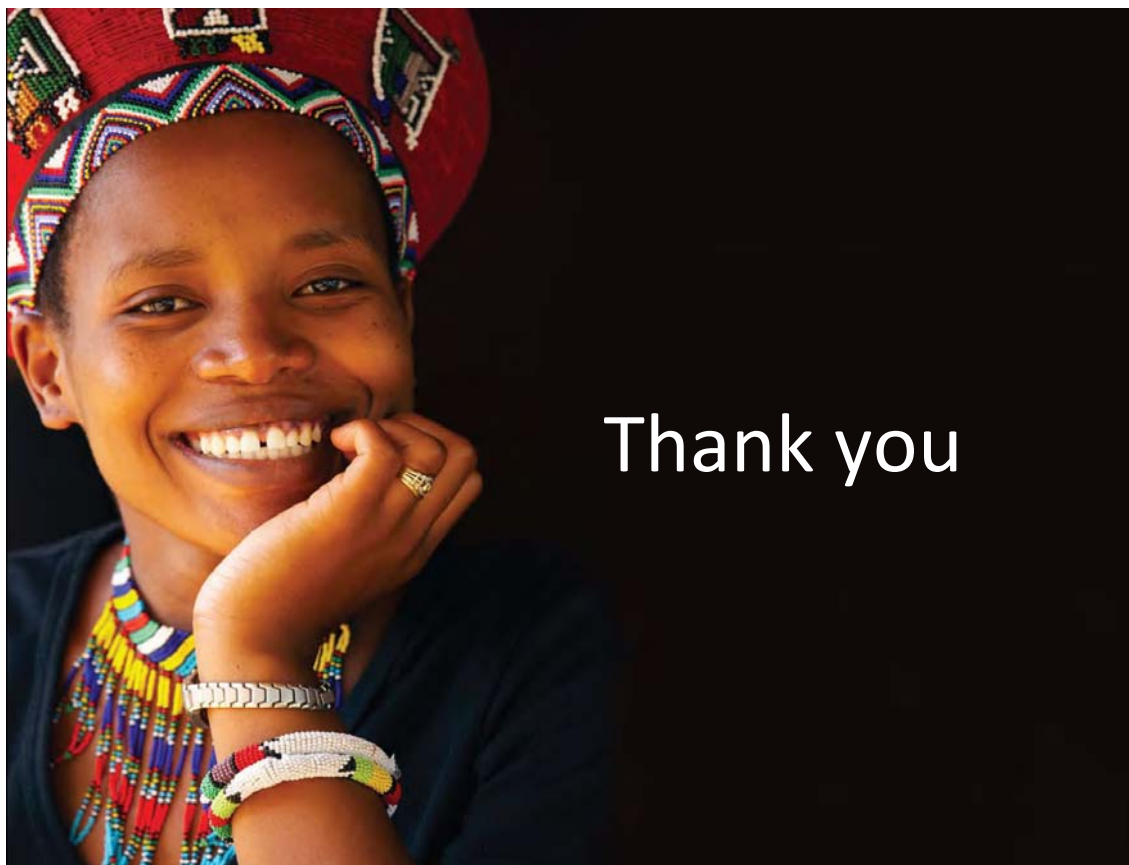
***Target: 1 million hectares***



## Potential Collaboration

- **Further define the initiative.**
- **Share lessons and case studies:** from GEF's investment on mainstreaming biodiversity in production land/seascapes and sectors.
- **Financing related projects:** Satoyama Initiative could utilize the existing GEF mechanism to finance related projects that conform with the GEF5 strategy, based on countries' interest and needs.





Thank you



**GLOBAL ENVIRONMENT FACILITY**  
INVESTING IN OUR PLANET

[www.theGEF.org](http://www.theGEF.org)