



UNITED NATIONS
UNIVERSITY

UNU-IAS

Institute for the Advanced Study
of Sustainability



SATOYAMA
INITIATIVE

Introduction

IPSI and Resource Mobilization: Partnership and Collaboration

Mr. William Dunbar

Communications Expert

Secretariat of the International Partnership for the Satoyama Initiative (IPSI)

UNU-IAS

The Satoyama Initiative (SI) is a global effort to realize societies in harmony with nature through promoting revitalization and sustainable management of production landscapes and seascapes, recognizing their potential benefits for both biodiversity and human well-being.



CBD COP10 (Decision X/32)

“Recognises the Satoyama Initiative as a potentially useful tool to better understand and support human-influenced natural environments for the benefit of biodiversity and human well-being”



CBD COP11 (Decision XI/25)

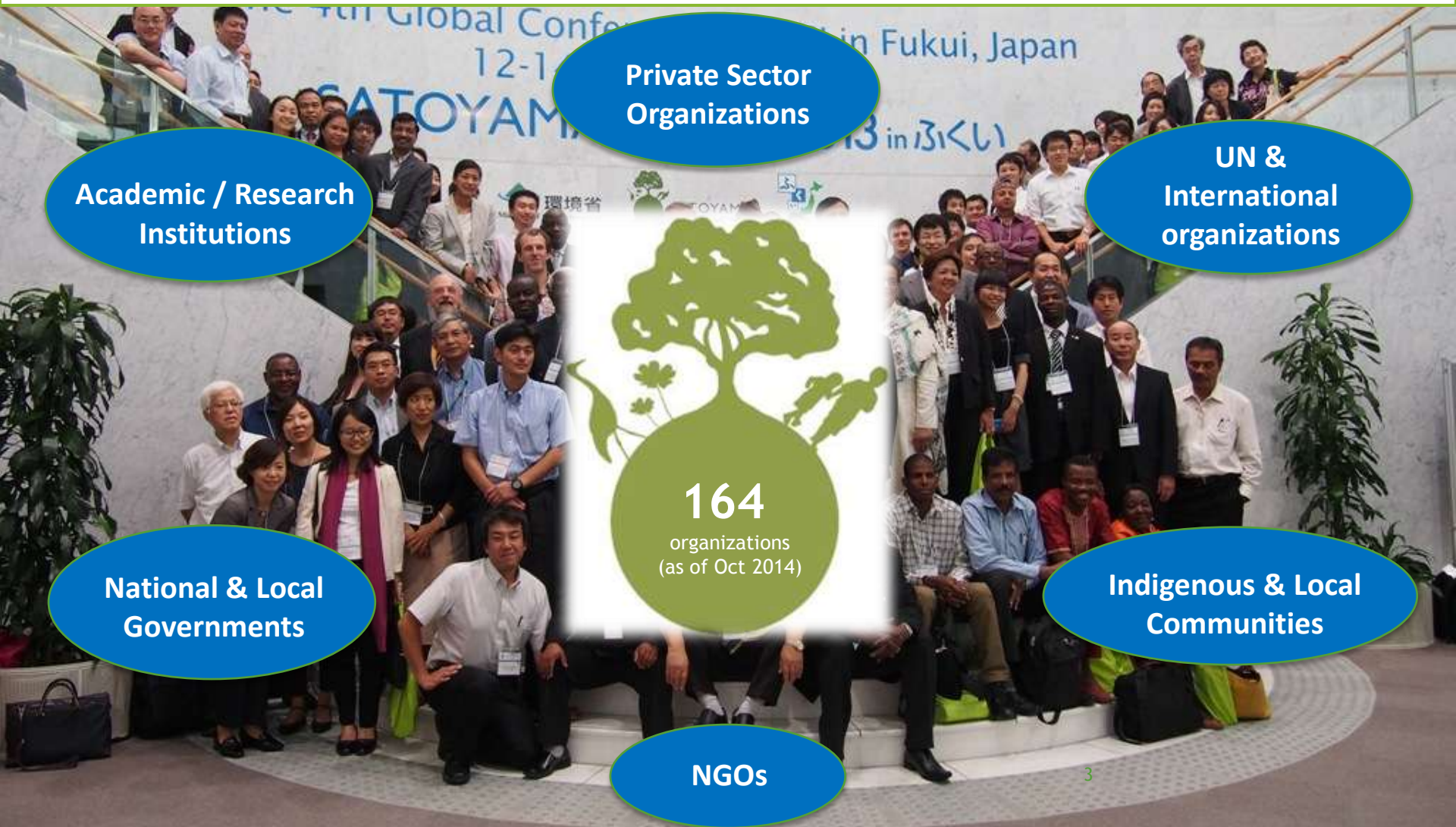
“... recognizes the contribution that the Satoyama Initiative is working to make in creating synergies among the various existing regional and global initiatives on human-influenced natural environment...”



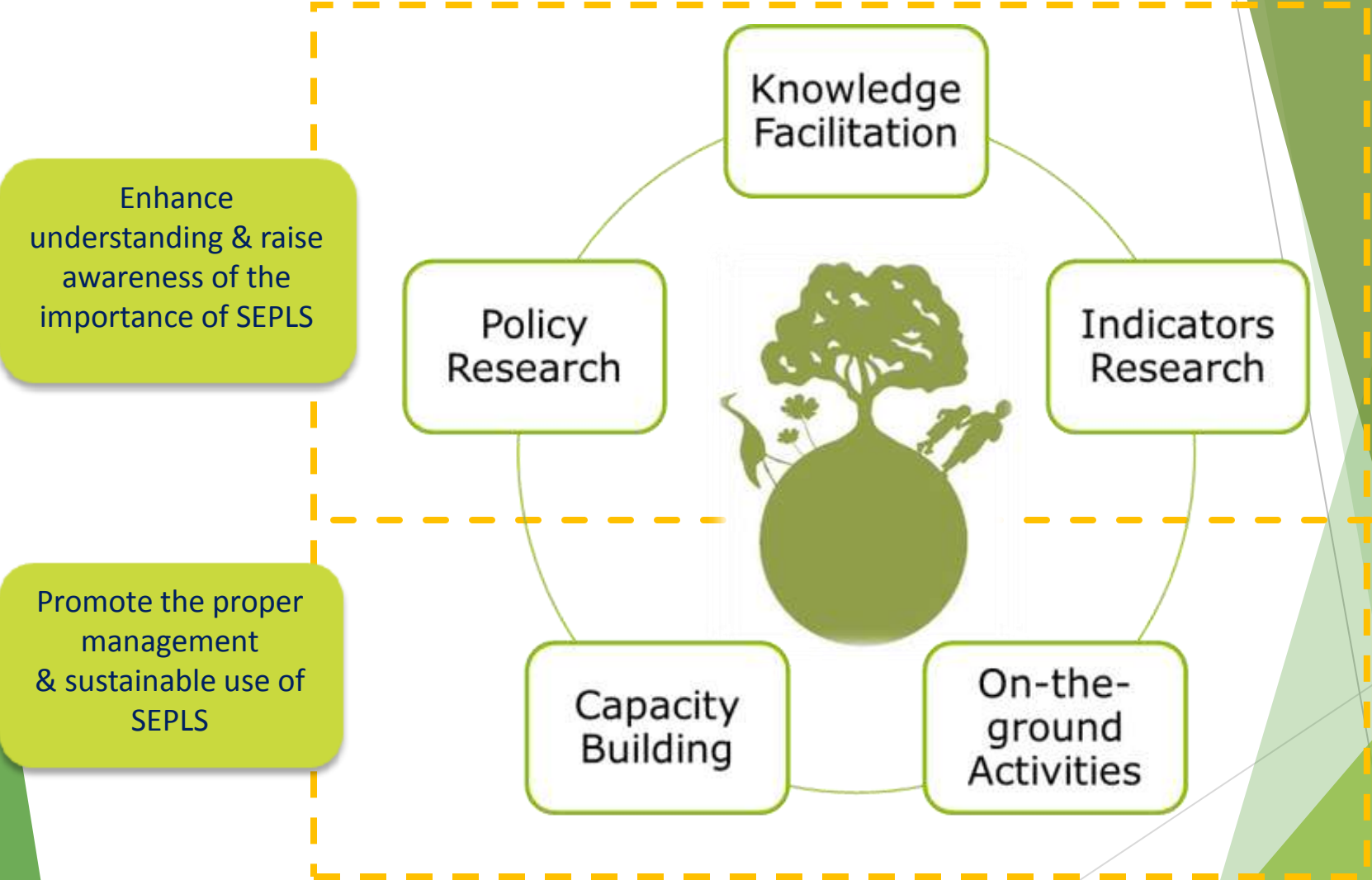
Socio-ecological production landscapes and seascapes (SEPLS): dynamic mosaics of habitats and land-uses shaped by the interactions between people and nature in ways that maintain biodiversity and provide humans with goods and services needed for their well-being in a sustainable way

The International Partnership for the Satoyama Initiative (IPSI):

Open to all organizations committed to promoting and supporting SEPLS for the benefit of biodiversity and human well-being to foster synergies in the implementation of their respective activities.



Five Pillars of IPSI Activities



IPSI Activities: Organizing events

► IPSI Global Conference

Assembly: Decisions on IPSI operational matters

Public Forum: Sharing experiences of individual and collaborative activities on landscape and seascape approaches to conservation

► IPSI Regional Workshop

To enhance collaboration in regions that share common issues and solutions

Past events: Asian Region (2013) and European Region (2014)

► Side-events at related conferences

- CBD-related events: COP, WGRI, SBSTTA
- ISAP, SPREP, IUCN World Parks Congress...

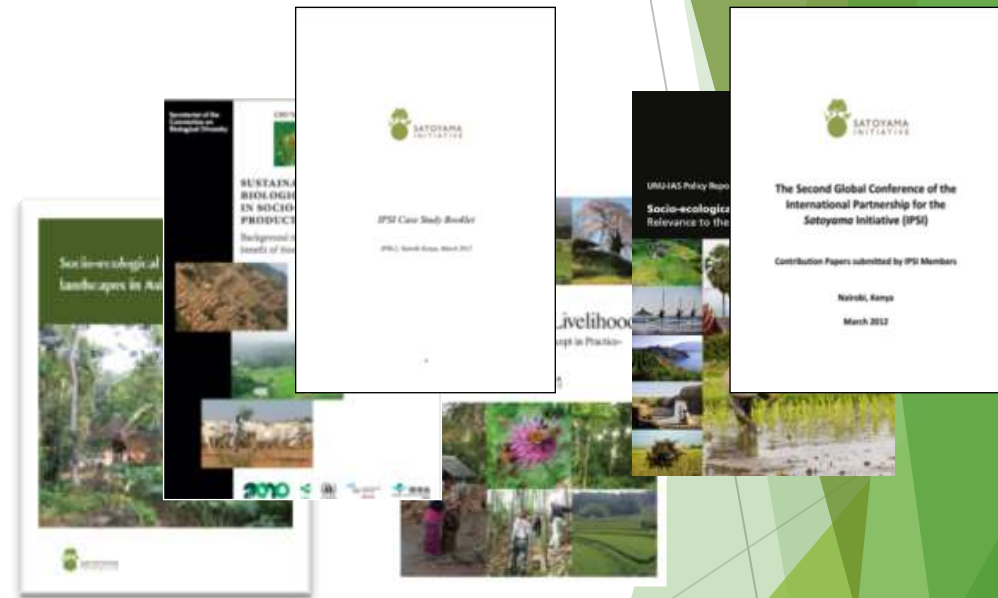
► Others


- Case study experts workshops
- Community dialogue workshop
- Indicators experts workshops



IPSI Activities: IPSI Case studies

- Over 70 case studies shared through IPSI website
- Lessons learned published in publications on sustainable resource use
- Presentations at a broad range of relevant events and meetings



- 
- All case studies are being systematically analyzed
 - An IPSI Case Study Experts Workshop was held in July 2014 to discuss how to collect information widely and share knowledge effectively

IPSI Activities: Collaborative Activities



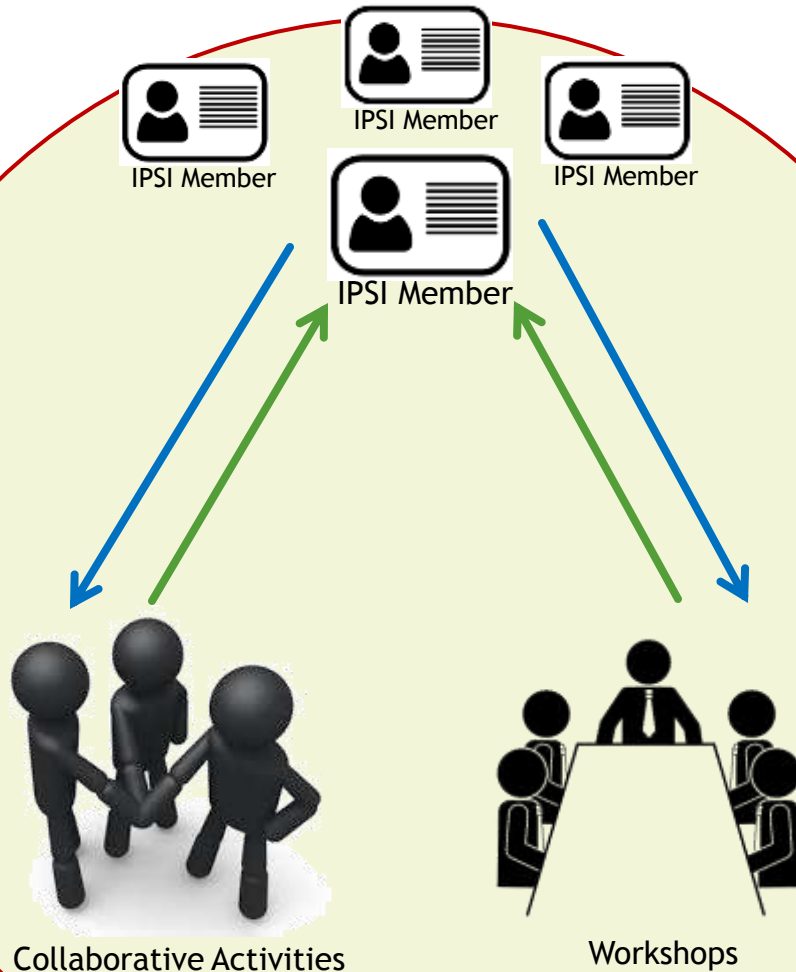
- IPSI includes a mechanism for creating collaborative activities among member organizations
- **29** collaborative activities have been created

Example Collaborative Activities:

Project Title	IPSI members
Developing a toolkit for the “Indicators for resilience in socio-ecological production landscapes and seascapes”	UNU, IGES, Bioversity International, & UNDP
Satoyama Development Mechanism (SDM)	UNU, MOE of Japan, & IGES
Community Development and Knowledge Management for the Satoyama Initiative (COMDEKS)	UNDP, MOE of Japan, SCBD, UNU

IPSI Activities: Resource Mobilization

- Connecting funding bodies with effective projects
- Diverse members in equal relationships can understand others' strengths and needs



- Website ,
Newsletter
- Conferences,
Events
- Publications



- General Public
- Government Bodies
- International Frameworks

IPSI Collaborative Activities: The Satoyama Development Mechanism (SDM)

- **Provides seed funding to:**
 - Promote the **implementation of activities** under the **IPSI Strategy and Plan of Action**
 - Promote the **development of model practices** for living in harmony with nature
 - Provide an incentive to **strengthen partnerships & to generate a knock-on effect**

Project sites for SDM 2013:



Uganda



Thailand



Russian Federation



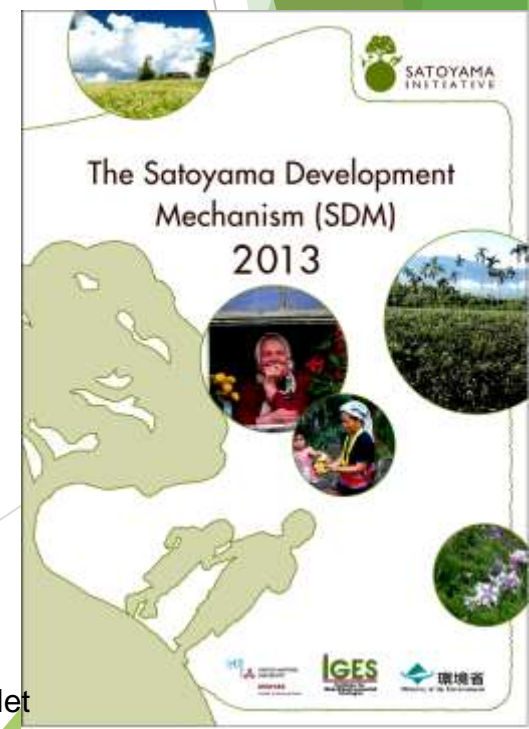
Nepal



Chinese Taipei

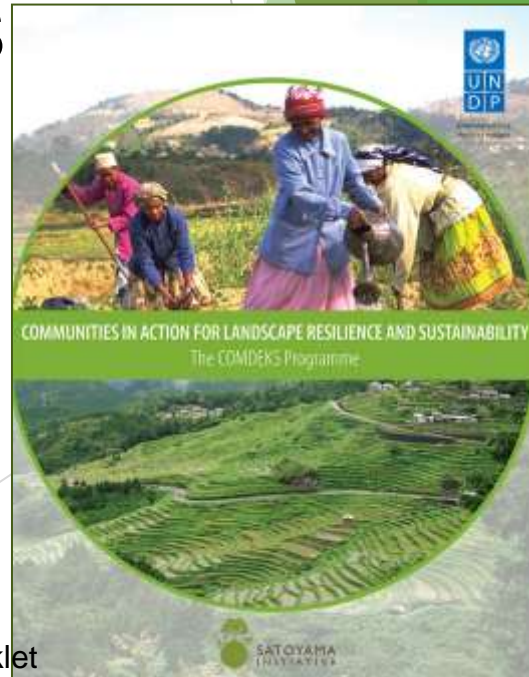


Peru



IPSI Collaborative Activities: Community Development & Knowledge Management for the Satoyama Initiative (COMDEKS) Project

- To develop sound biodiversity management and sustainable livelihood activities to increase community resilience and to maintain, rebuild, and revitalize SEPLS
- Currently under implementation in 20 countries



Today's Side Event:

Mobilizing Resources for Mainstreaming Biodiversity into

Aim:

To explore potential ways for further improvement of resource mobilization by highlighting the effectiveness of existing schemes

Ms. Sana Okayasu, SDM Secretariat (IGES)	1. Introduction to the Satoyama Development Mechanism (SDM)
Mr. Alejandro Argumedo, Association ANDES	1. ANDES and its activities 2. How SDM contributes to ANDES activities
Mr. Nick Remple, UNDP COMDEKS	1. COMDEKS: Outcomes from respective project sites
Ms. Yoko Watanabe, GEF SEC	1. Introduction of new GEF project 2. The link between GEF-6 biodiversity strategy and Satoyama Initiative
Panel Discussion	