

---

# **Communities in Action for Landscape Resilience and Sustainability The COMDEKS Programme**

**Diana Salvemini, COMDEKS Project Manager  
(UNDP-GEF)**

**IPSI Side Event, Contribution to the Aichi Biodiversity Targets from the Ground Up,  
CBD COP-12, Pyeongchang, October 2014**

---



*Empowered lives.  
Resilient nations.*

# Working towards Socio-Ecological Production Landscapes



# What is COMDEKS?



[www.comdeksproject.com](http://www.comdeksproject.com)

## The Community Development and Knowledge Management for the Satoyama Initiative Project

### Goal ➔

To develop sound biodiversity management and sustainable livelihood activities to increase community resilience and to maintain, rebuild, and revitalize socio-ecological production landscapes and seascapes (SEPLS)

**Implementing Agency** ➔ UNDP

**Delivery mechanism** ➔ UNDP-implemented GEF-SGP

### Countries ➔

First Phase: Brazil, Cambodia, Ethiopia, Ghana, Fiji, India, Malawi, Nepal, Slovakia, and Turkey

Second Phase: Bhutan, Cameroon, Costa Rica, Ecuador, El Salvador, Kyrgyzstan, Indonesia, Mongolia, Namibia and Niger

### Timeframe and Budget ➔

5-year partnership programme; Japan Biodiversity Fund contributing with 10 million USD (2011-2016).

### Status ➔

Currently under implementation in 20 countries (+ 100 projects)



# Where We Work: Diverse landscape challenges require locally adapted solutions



## Inland water systems

Lakes

Watershed

Wetlands

Kyrgyzstan – Lake Issyk-Kul

Malawi – Tukombo-Kande, Lake Malawi

Niger – Tabalak Lake

Cambodia – Steung Siem Reap Watershed

Ecuador – Alto Napo River Watershed, Amazon

Costa Rica – Rio Jesus Maria Watershed

Slovakia - Východoslovenská nížina Lowland



## Coastal seascapes

El Salvador – Jaltepeque-Naja Lempe

Fiji – Natewa-Tunuloa Peninsula

Indonesia – Semau Island

Turkey - Datça -Bozburun Peninsula



## Mountain ecosystems

Bhutan – Gamri Watershed

Ghana – Weto Range

India – Kumaon Region, Uttarakhand

Nepal - Makawanpur



## Agro-pastoral systems

Ethiopia – Gilbel Gibe Catchment

Cameroon – Bogo Region

Brazil – Jequitinhonha Valley



## Grasslands

Mongolia – Central Selenge Region

Namibia – Ipumbu-ya Shilongo Conservancy



# COMDEKS Strategic Framework:

Enhancing community resilience and sustainability at landscape level through adaptive management



**Adaptive Management Cycle Enhancing Resilience of Socio-Ecological Production Landscapes**



*Empowered lives.  
Resilient nations.*

# Resilience Indicators: A Tool for Landscape Assessment

- **Indicators of Resilience in SEPLS:** ongoing collaboration between UNDP, UNU-IAS, Bioversity International, and IGES.
  - The indicators are **being applied and tested** in COMDEKS project sites to help measure and understand **socio and ecological resilience** of target landscapes and seascapes
- **Resilience Indicator Toolkit (forthcoming launch during UNU-IAS Side Event)**



# Landscape Resilience Outcomes:



## Enhancing ecosystem services

- Sustainable production practices that maintain ecosystem services and conserve biodiversity
- Forest restoration activities
- Soil conservation and improved water management
- Ecosystem-based Adaptation



## Strengthening the sustainability of production systems

- Diversification of agricultural landscapes (agroforestry; multifunctionality)
- Diversification of production systems (cultivation of a higher diversity of crops and varieties and crop-livestock-trees integration)
- Low-input agriculture; agroecology
- Conservation of Plant Genetic Resources through sustainable use



## Developing and diversifying livelihoods and income generation

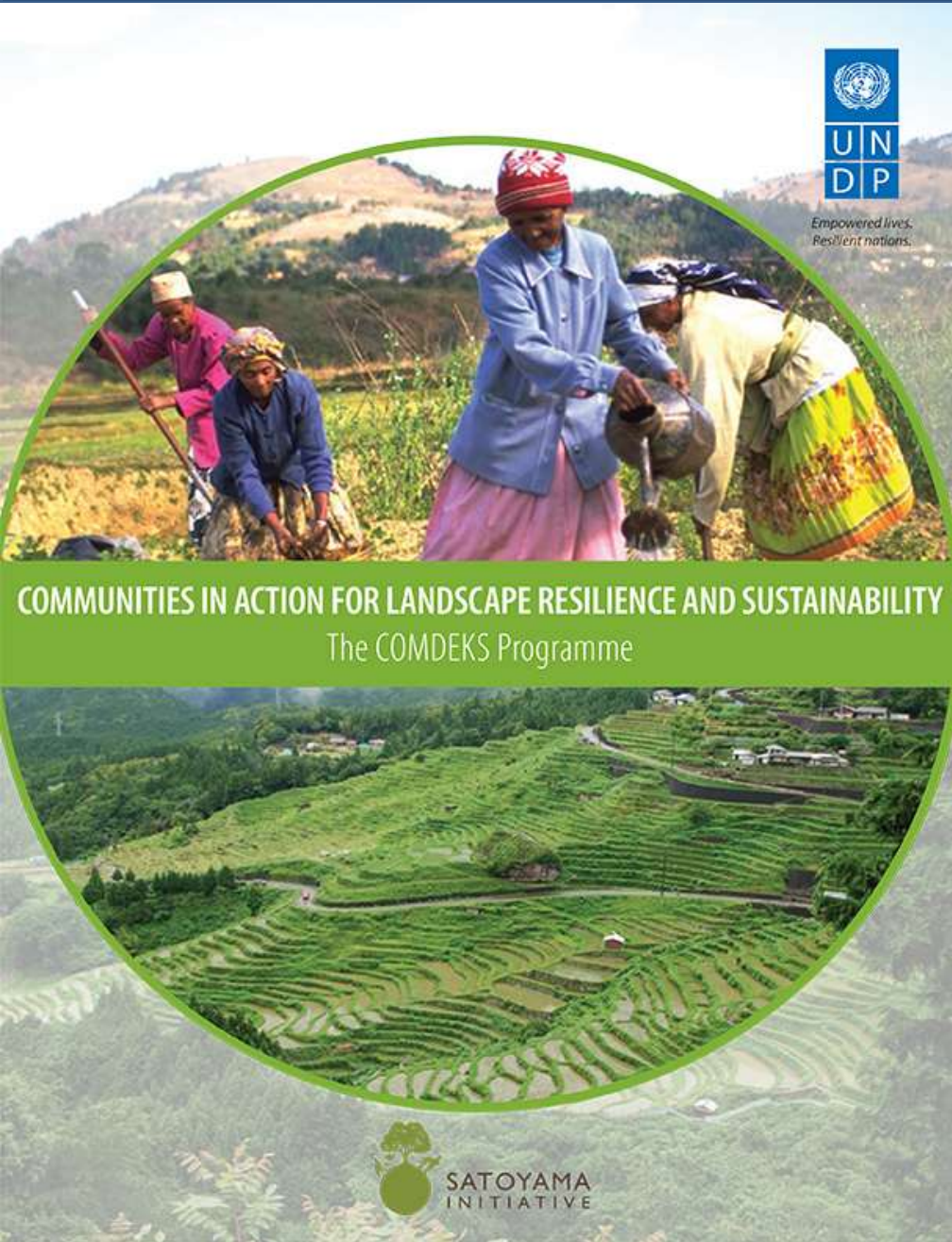
- Activities that promote access to new markets for biodiversity-friendly products
- Activities that promote nature-based tourism initiatives generating income for local communities
- Other activities supporting diversification of livelihoods.



## Strengthening institutions and governance systems at the landscape level

- Activities that promote participatory governance systems for making and implementing decisions affecting target landscapes
- Strengthening NGO and COB capacities for landscape governance and management
- Promotion of networks for policy advocacy, learning, economies of scale

# Learning from the COMDEKS Community-Based Landscape Approach:



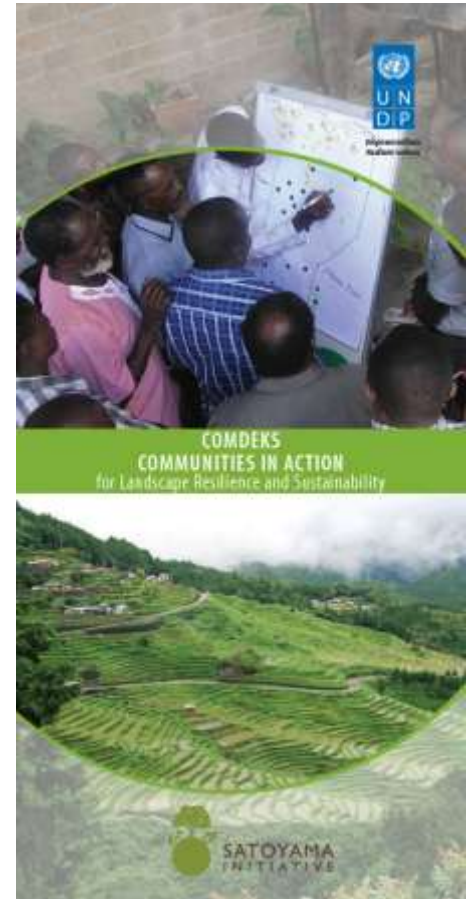
## COMDEKS on the Ground: Phase 1 Country Case Studies

- ✓ **Brazil: Jequitinhonha Valley**
- ✓ **Cambodia: Steung Siem Reap Watershed**
- ✓ **Ethiopia: Gilbel Gibe Catchment**
- ✓ **Fiji: Natewa-Tunuloa Peninsula**
- ✓ **Ghana: The Weto Range**
- ✓ **India: Himalayan State of Uttarakhan**
- ✓ **Malawi: Takumbo-Kande Region**
- ✓ **Nepal: Makawanpun District**
- ✓ **Slovakia: Laborec-Uh Region**
- ✓ **Turkey: Turkey - Datça -Bozburun Peninsula**



# Emerging Lessons:

- **Participatory Landscape Planning and Collective Action**
  - ✓ Participatory Landscape Planning develops social capital for collective action.
- **Governance of Integrated Landscapes**
  - ✓ The governance of integrated landscapes calls for new institutional models.
- **Knowledge, Innovation and Scaling Up**
  - ✓ Knowledge from community-led innovation is critical to adaptive management and scaling up the landscape approach.
- **Long-term Engagement and Adaptive Management**
  - ✓ Work at the landscape level requires time and long-term support, but frees communities and donors from the constraints of a single project focus.



*Empowered lives.  
Resilient nations.*

For more information, visit

[www.comdeksproject.com](http://www.comdeksproject.com)

Contact person: [diana.salvemini@undp.org](mailto:diana.salvemini@undp.org)

**THANK YOU!**

