

CBD COP12 Side Event:

**Contribution to the Aichi Biodiversity Targets from the ground up**

**– Engaging diverse communities and perspectives through the Satoyama Initiative**

Pyeongchang, Republic of Korea, 6 Oct 2014



**UNITED NATIONS  
UNIVERSITY**

# **Sustainable Development and the Satoyama Initiative**

**Prof. Kazuhiko Takeuchi**

**Senior Vice-Rector, United Nations University**

# The Satoyama Initiative and the CBD

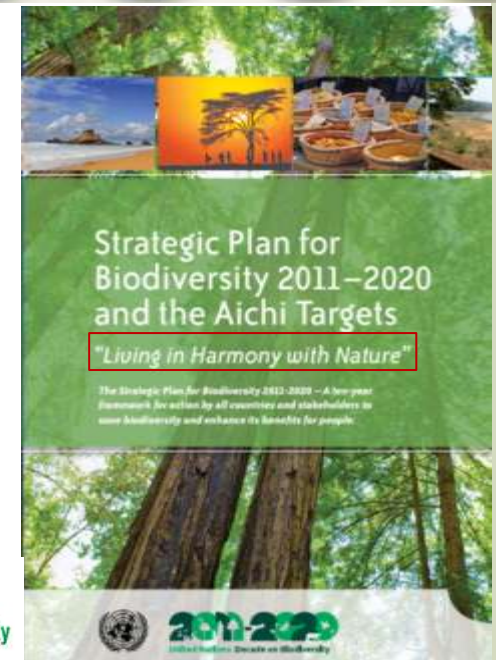
- The Satoyama Initiative aims to contribute to the **CBD's three objectives**, in particular the second objective, **“Sustainable use of biodiversity”**, through **promoting sustainable production and use of natural resources** in landscapes and seascapes around the world.
- **The International Partnership for the Satoyama Initiative (IPSI)** was launched during **CBD COP10** to facilitate and accelerate the implementation of activities for conserving, restoring and advancing **socio-ecological production landscapes and seascapes (SEPLS)** around the world.
- **The Satoyama Initiative's usefulness in contributing to human-influenced natural environments was recognized in Decisions of the last two COPs.** (Decision X/32 and XI/25 “Sustainable use of biodiversity”).



# The Satoyama Initiative and the CBD's Strategic Plan and Aichi Biodiversity Targets

- At CBD COP10 in Aichi, Japan, the Strategic Plan for Biodiversity 2011-2020 and Aichi Biodiversity Targets were adopted with the vision of "**Living in harmony with nature**". The Satoyama Initiative shares the **same vision**.
- Actions in socio-ecological production landscapes and seascapes (SEPLS) can **contribute to achieving many of the Aichi Biodiversity Targets:**

*1. People's awareness; 4. Sustainable consumption and production; 6. Marine living resources management; 7. Sustainable agriculture, aquaculture and forestry; 11. Protected areas; 13. Genetic diversity; 14. Ecosystems and essential services; 15. Ecosystems restoration and resilience; 17. NBSAPs; 18. Traditional knowledge; 19. Knowledge, science, technologies*



# Sustainable Development Goals (SDGs) and the Satoyama Initiative

- **Rio+20** in Rio de Janeiro in 2012 focused on achieving **sustainable development** and alleviating poverty by transitioning to a green economy.
- **Addressing issues on biodiversity and ecosystems is essential for sustainable development.** Currently proposed **SDGs** by the Open Working Group on SDGs include many goals related to biodiversity and ecosystems, including:
  - Goal 2 on food security
  - Goal 6 on water and sanitation
  - Goal 12 on sustainable consumption and production
  - Goal 11 on cities and human settlements.
  - Goal 14 on oceans and coasts
  - Goal 15 on terrestrial biodiversity
- **Socially and ecologically sound approaches in production activities** will play key roles in **conserving biodiversity and ecosystems** while contributing to **poverty reduction**.
- Activities in the Satoyama Initiative should **explore and demonstrate** such approaches and **accumulate successful models and experiences**.



# Keys for Accumulating Successful Models for Sustainable Development

## Strengthen ecological resilience

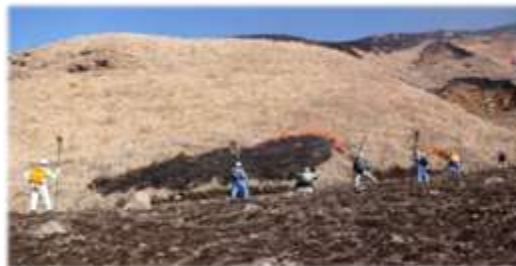
- Strengthen ecological functions and services
- Synergize traditional and scientific knowledge



Gigantic coastal levee being built in tsunami-affected area

## Creating new commons

- Participation and collaboration of various stakeholders
- Linking rural and urban areas through goods and services



Volunteers working to conserve grassland in Aso, Japan

## Creating new business models

- Expanding markets for various local products (e.g., branding, certification)
- Diversification of livelihoods, including through developing agritourism



Branding of rice produced by environmentally-friendly farming symbolizing Oriental storks in Fukui, Japan



Tsunami-affected area used for nature restoration to mitigate damage by future tsunamis

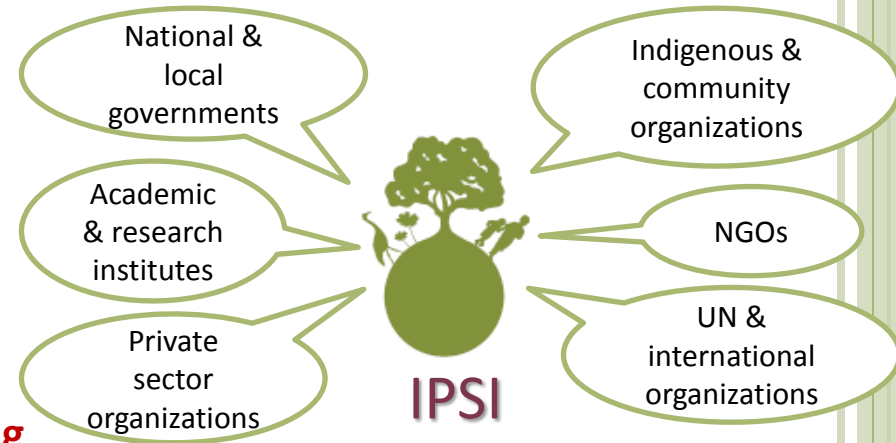


Local products and beautiful landscapes in Tuscany in Italy attract many city dwellers to stay for holidays

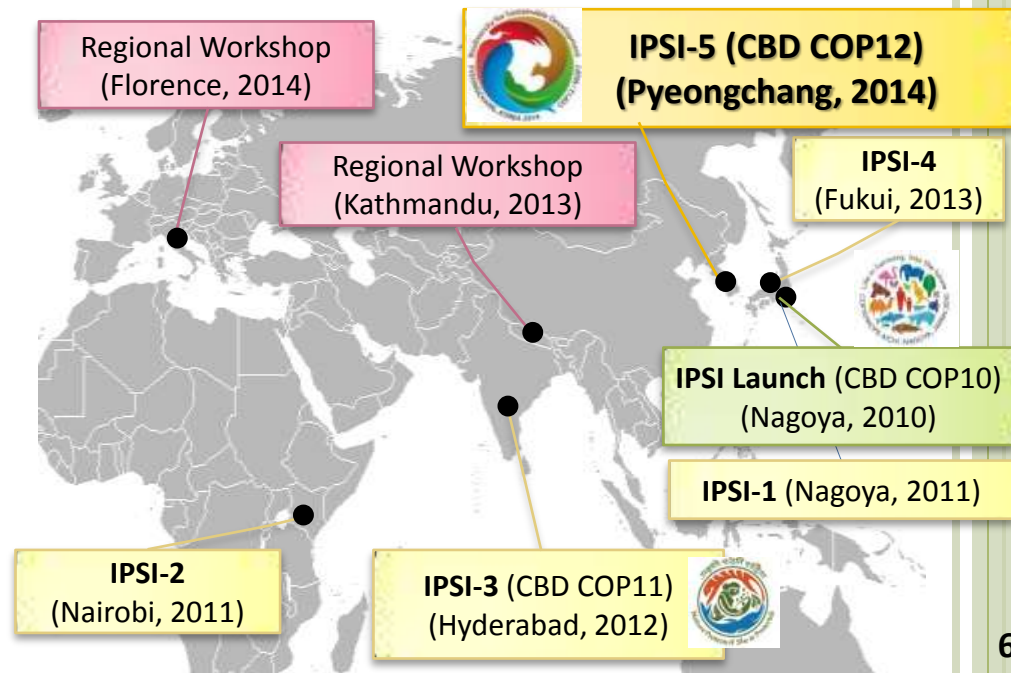
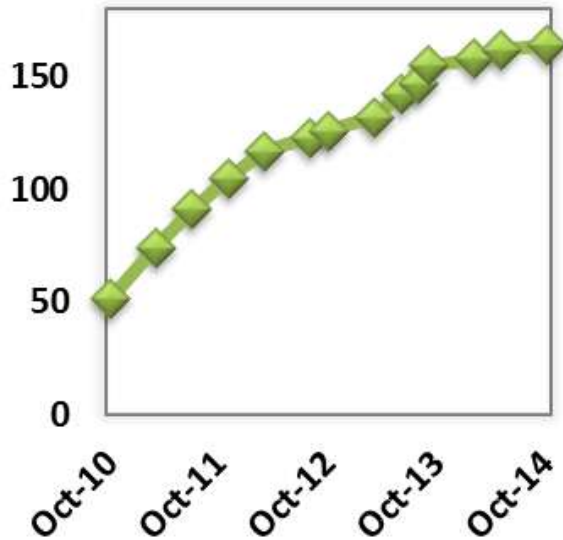


# International Partnership for the Satoyama Initiative (IPSI)

- Has grown rapidly from 51 to **164 member** organizations since it was established in 2010.
- **A multi-stakeholder partnership** diverse in type and geography.
- Promotes **various kinds of activities** including knowledge facilitation, research, policy development and capacity building.
- A platform for **sharing knowledge and fostering synergies**. Provides opportunities for members to meet and discuss.



Increase in IPSI membership



# The Fourth IPSI Global Conference (IPSI-4)

12 - 14 September 2013, Fukui, Japan  
Hosted by Fukui Prefectural Government

## *“The Way Forward: Implementing the IPSI Strategy for the Benefit of Biodiversity and Human Well-being”*

- Set out concrete ways to implement IPSI Strategy – endorsement of **Plan of Action**
- Provided participants with various opportunities to **learn about and experience Fukui’s satoyama and satoumi/satoko**.
- Also **stimulated local movements** and led to establishment of national network in Japan
- Active discussions at the **Public Forum** on promoting socio-ecological production landscapes and seascapes (SEPLS) **from local perspectives**. Suggested actions include:
  - ✓ Improving **enabling conditions for activities on the ground**, such as by strengthening the **leadership capacity**; enhancing economic benefits through **branding, certification and ecotourism**; fully reaching out to both **women and younger generations**.
  - ✓ Improving **participatory and bottom-up approaches** and **multi-sector involvement**.

### [Events during IPSI-4]

- **Satoyama Stay**
- **Excursion to *satoyama* in Fukui**
- **IPSI General Assembly**
- **IPSI Public Forum**
- **Side events**
  - Japanese network for the Satoyama Initiative
  - Satoyama Dialogue with Political Leaders
- **Public Symposium**



# Satoyama Initiative European Regional Workshop

Florence, Italy, May 2014

Hosted by the Romualdo Del Bianco Foundation - Life Beyond Tourism

***“Revitalizing production landscapes in Europe:  
travel and dialogue for people and biodiversity”***

- To **share the concept of the Satoyama Initiative** and discuss solutions on **regionally-shared issues**.
- Participation by IPSI members and other experts in Europe.
- Discussed effective ways to **revitalize SEPLS** in Europe **by promoting responsible tourism**.
- Led participants' recognition that **traditional products** and **responsible tourism** support each other, and both are important for and supported by **SEPLS**.
- Suggested four **areas of future actions**:
  - ✓ Collection and systematization of data
  - ✓ Collaboration, education and capacity-building for different stakeholders
  - ✓ Connecting policy and practice
  - ✓ Awareness-raising





# The Fifth IPSI Global Conference (IPSI-5)

4-5 October 2014, Pyeongchang, Republic of Korea

Co-organized by Ministry of Environment, Republic of Korea

*“Furthering action in production landscapes and seascapes  
for sustainable development”*

## ○ Assembly

- Two new members joined. **164 members** in total.
- Revised Operational Framework to create **Charter and Operational Guidelines**

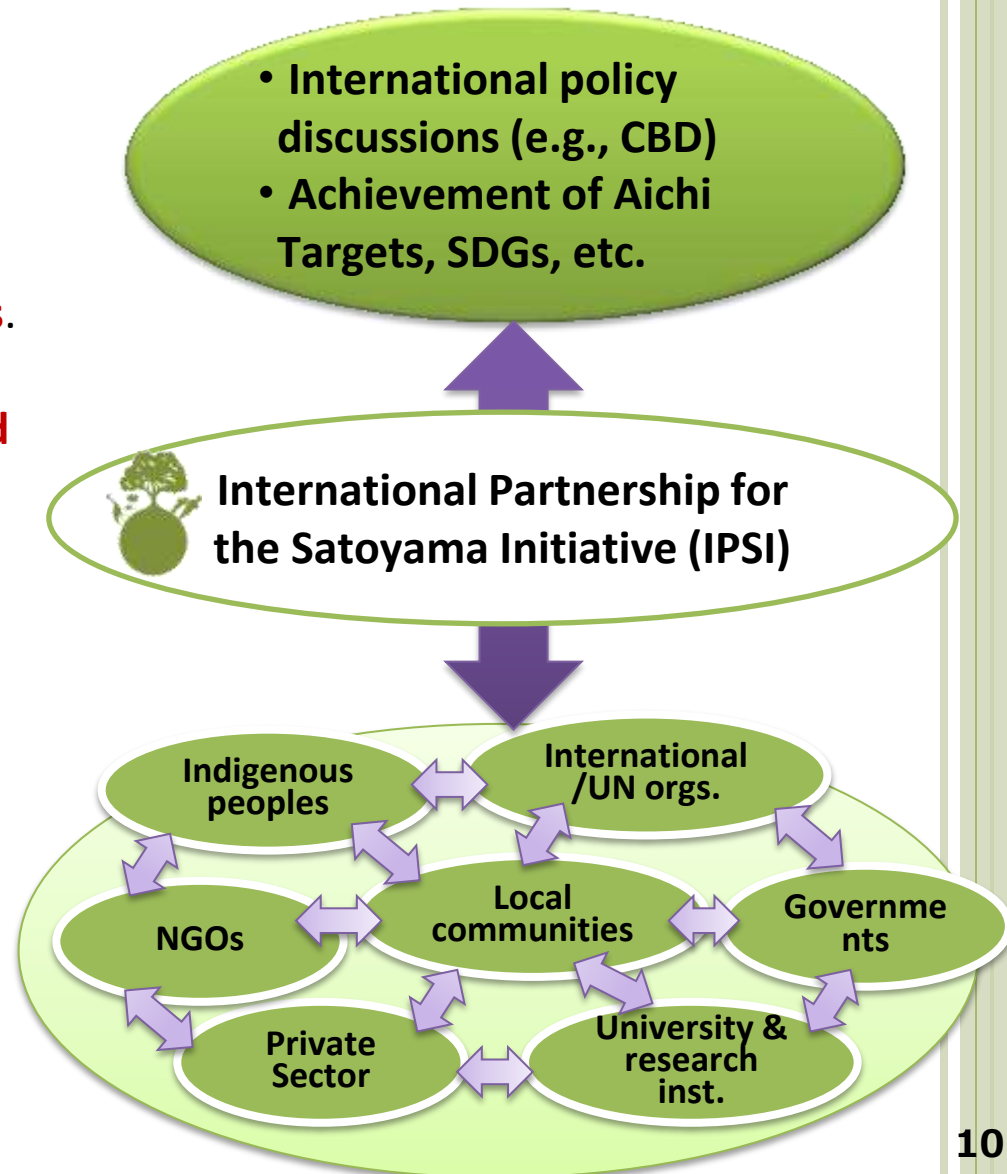
## ○ Public Forum

- Eight presentations to share updates of **members’ recent activities in capacity building and livelihoods**.
- Showed how IPSI has **gathered a body of knowledge** and **brings together implementation** at many different levels.
- Strengthened participants’ awareness of **IPSI’s role in facilitating upscaling and replication** through effective practices and collaboration.



# IPSI as a Global Network: Linking Local and Global Efforts

- IPSI's multi-stakeholder partnership promotes **creating synergies among different sectors**.
- Local actions in SEPLS are important to **develop and accumulate actual models**.
- Such activities should be in alignment with **strengthening socio-economic and ecological resilience**.
- By sharing experiences in different contexts around the world, **important lessons can be extracted and fed into global discussions**.
- Through **interactions between global and local levels**, local efforts can be **further motivated and be more likely to succeed**.
- This will also **contribute to global goals** such as the Aichi Targets and SDGs.



**Thank you for your attention!**

