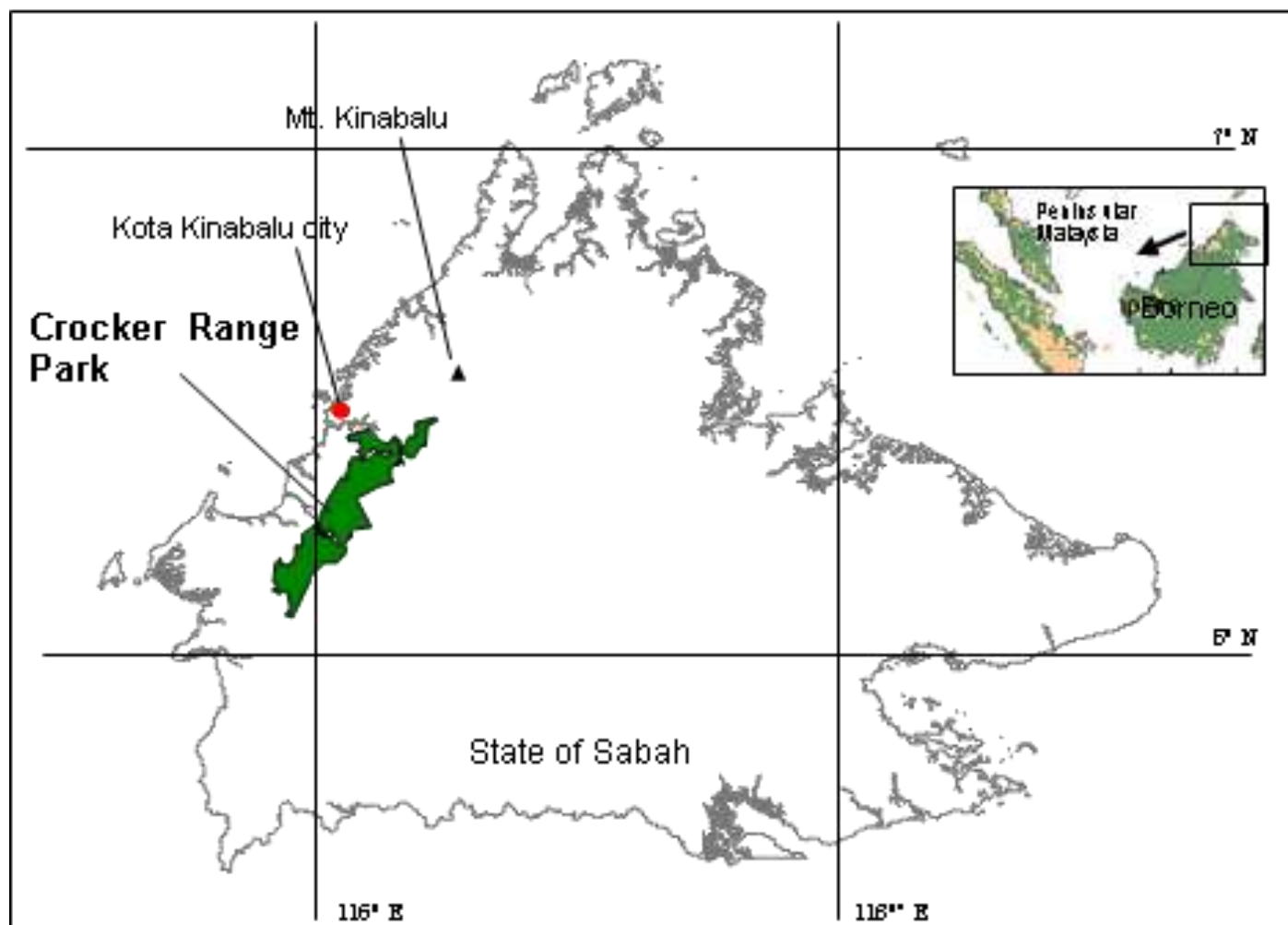


Sabah's experience and practice for sustainable development and conservation

Sabah Case Study Tagal and JICA-SDBEC



Gerald Jetony, Natural Resources Office, Sabah



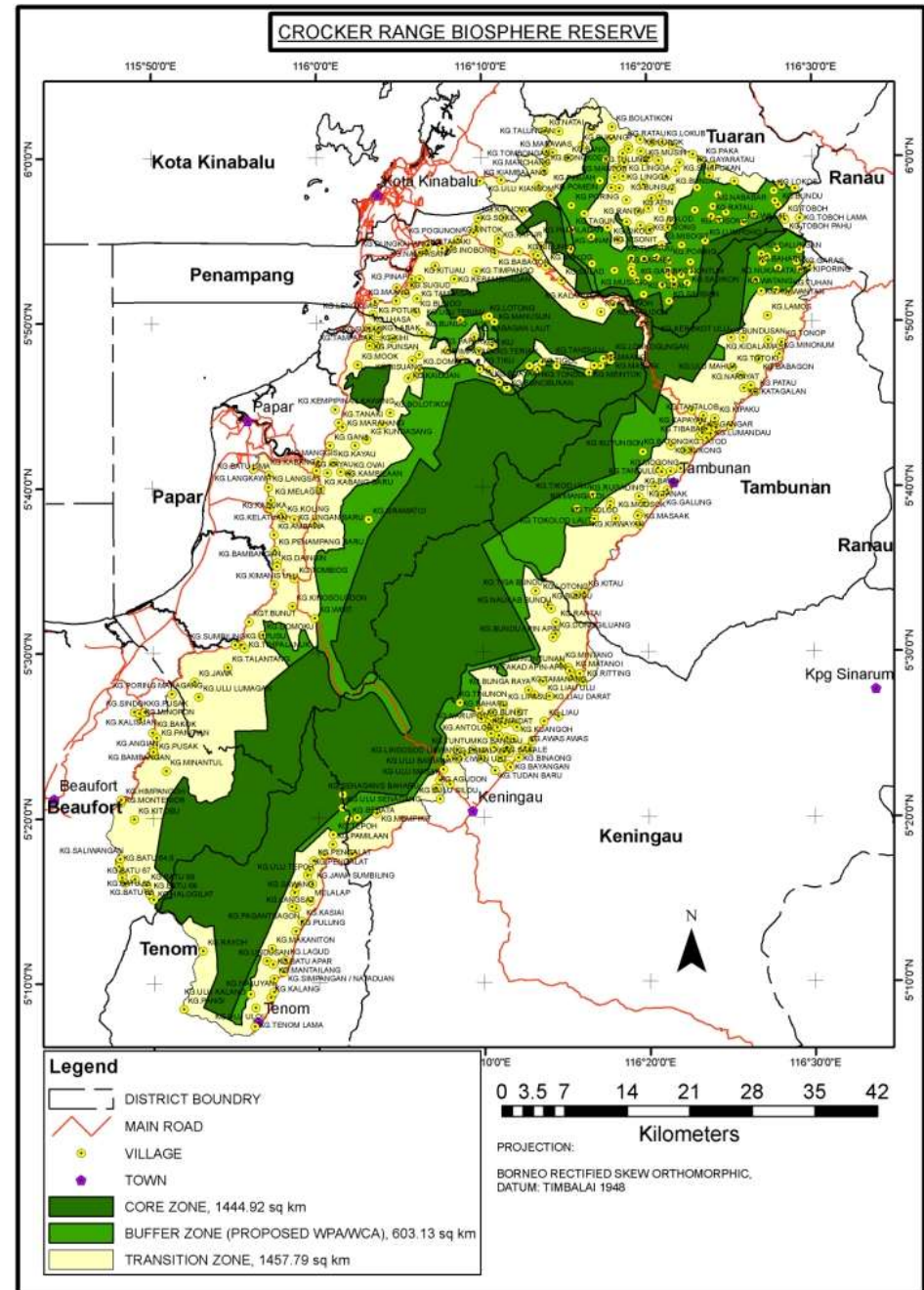
CRBR: Status

- Core area: 144,492 ha
- Buffer zone: 60,313 ha
- Transition area: 145,779 ha
- Total: 350,584 ha

Communities

- Inhabitants: 99,101
 - Number of Villages: 399
- (Core area = 2, Buffer zone = 52, Transition area = 264, Unknown = 80)

CRBR: Recommendations for Management of the Buffer Zone and Transition Area (JICA 2011)



UNESCO approves Crocker Range as a biosphere reserve



The Crocker Range biosphere reserve is located at the West Coast of Sabah (north of Borneo), southern part of the Mount Kinabalu (World Heritage Site), and stretches about 120 km north and south and 40 km east and west.

Tagal system is a smart partnership between State Agency/Fishery Department and Community in protecting and conserving fresh water resources.





A society in harmony with Nature (Tudan Village in the buffer zone of MAB)

Issues/Challenges

- Steep slope
- Less job opportunities
- Income generation
- Access to the market
- Transparent of decision-making process



Strengths/opportunities

- Pristine environment (water, soil and forest)
- Farming with limited impact on soil fertility and stability
- Traditional knowledge



- Soil improvement
- Livelihood improvement
- Protection and utilization of local knowledge

Making Compost



compost



Apiculture (bee keeping)

Conservation for riparian area

Protection of traditional knowledge



Awareness



Waste management demonstration
River Environmental Education

Capacity Building

- Community researchers are appointed.
- A variety of opportunities for learning (how to get information, how to translate and analyze data, how to communicate with people etc.) were given.



Support for Women Group

- Homestay/eco-tourim
- Expanding Fresh vegetable market



In future

- Develop community-based conservation strategy and alternative livelihood strategy
- Explore market opportunity of value-added products
- Developing check list for traditional herb plant
- Test/demonstration on Compost
- Draft of management plan at Kg.Tudan with a variety of recommendations



Thank you!

Let's work together!



<https://www.facebook.com/sdbec.jica>