



Introduction to the International Partnership for the Satoyama Initiative (IPSI) and the Regional Workshop in Florence



Wataru Suzuki & William Dunbar
IPSI Secretariat

United Nations University Institute for the Advanced Study of Sustainability (UNU-IAS)
May 2014, Florence, Italy

Socio-Ecological Production Landscapes and Seascapes: SEPLS

Spain (*Dehesa*)



Korea (*Maeul*)



Cambodia
(*Srair-Chamkar*)



Malawi (*Chitemene*)



Home garden



Philippines (*Muyong*)



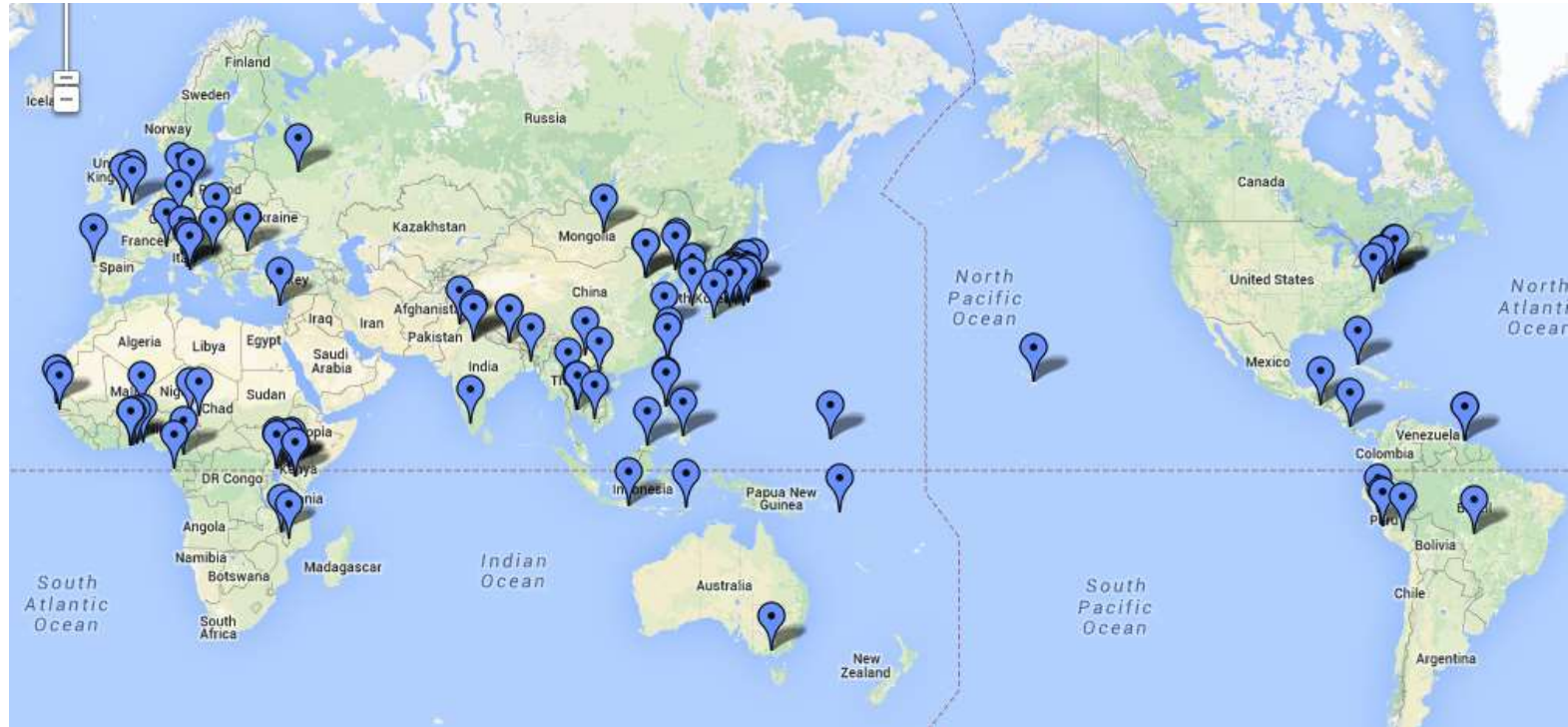
Dynamic mosaics of managed socio-ecological systems producing
a bundle of ecosystem services for human well-being

The Satoyama Initiative

- The Satoyama Initiative is a global effort to **realize societies in harmony with nature**
 - ✓ through promoting sustainably managed **production landscapes and seascapes**
 - ✓ for the benefit of **biodiversity** and **human well-being**
 - ✓ through broader global recognition of SEPLS and its value
- Initiated by the Ministry of the Environment of Japan and United Nations University



The International Partnership for the Satoyama Initiative (IPSI)

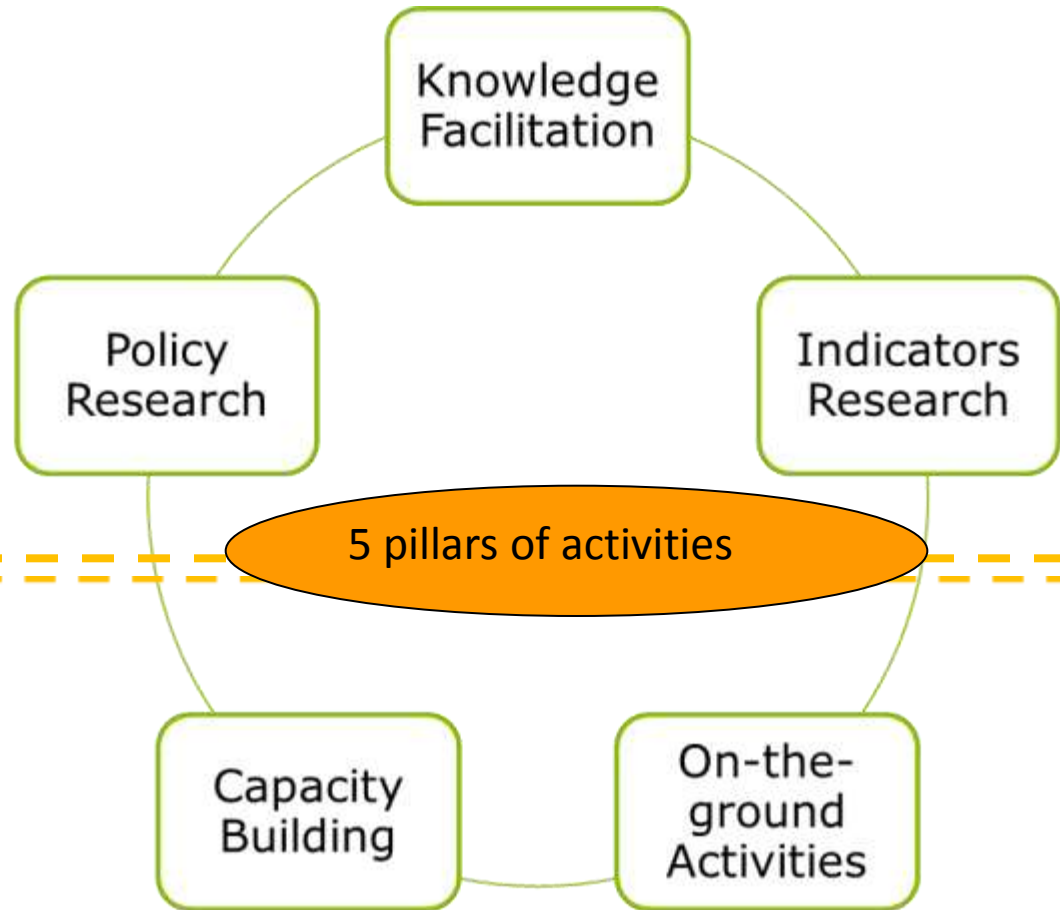


A global partnership to provide and enhance opportunities for working together to conserve and advance socio-ecological production landscapes and seascapes (SEPLS), cultural landscapes, or historical landscapes

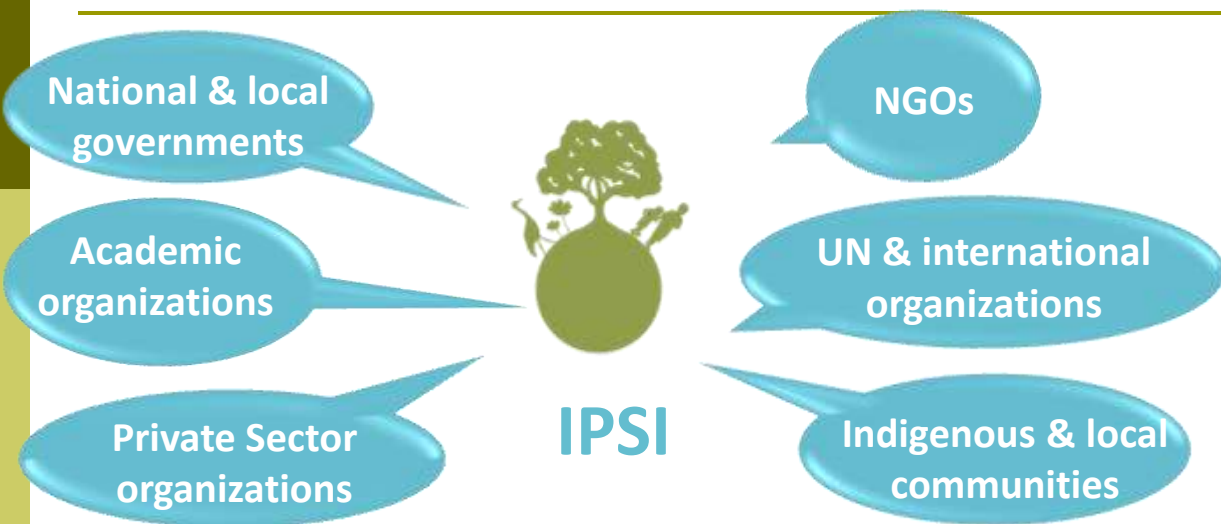
Framework of IPSI Activities

1. Enhance the understanding and raise awareness of the importance of SEPLS

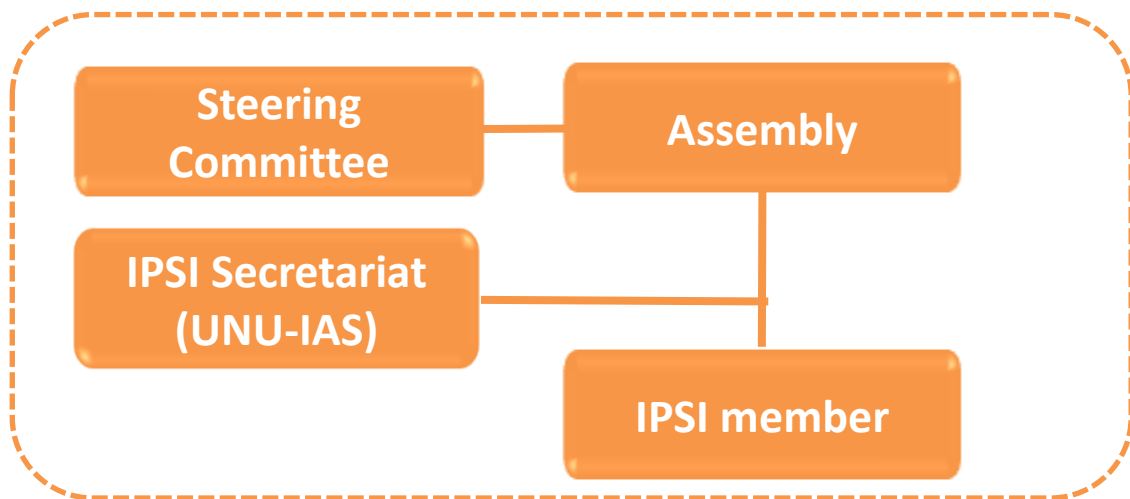
2. Promote the proper management and sustainable use of SEPLS



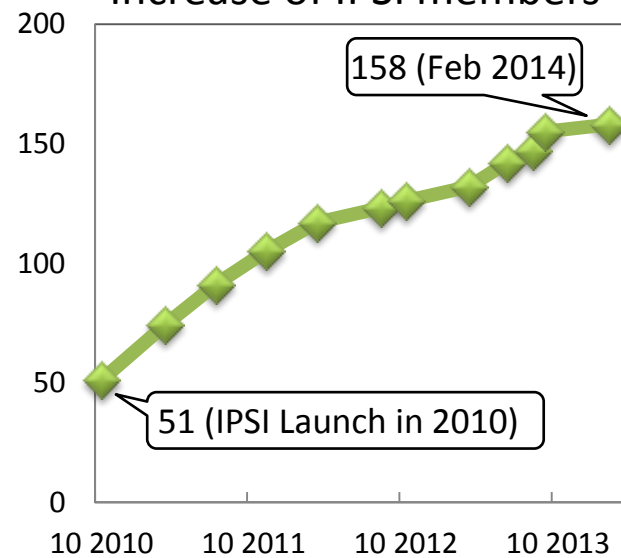
IPSI as a Multi-Stakeholder Platform



IPSI's Structure



Increase of IPSI members



Realising the vision of the Satoyama Initiative



Vision of the Satoyama Initiative

“Realising Societies in Harmony with Nature”

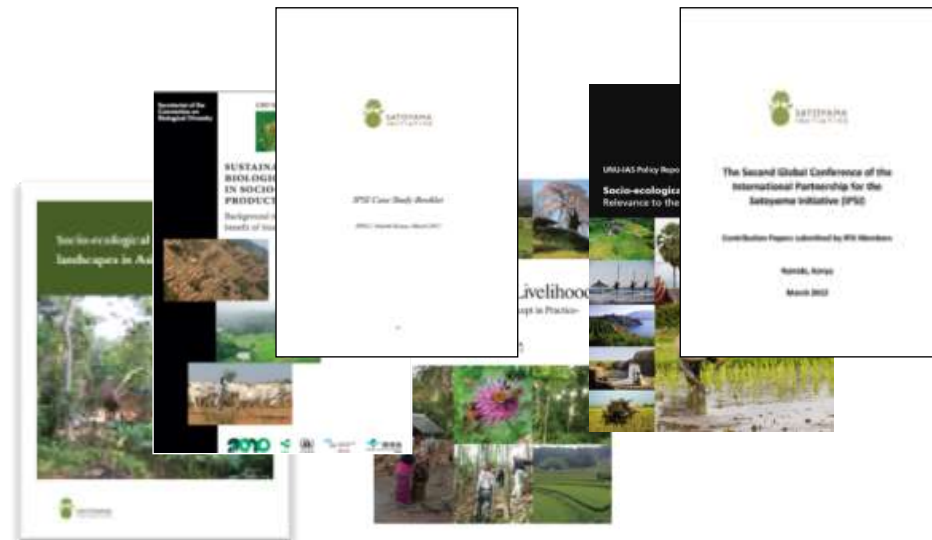
{ *IPSI Strategy*
- *Mission*
- *Objectives*

{ *IPSI Plan of Action*
- *Priority Actions*
- *Mechanisms to Implement Priority Actions*
- *Monitoring, Reporting and Evaluation*

IPSI: A Platform for Knowledge Sharing

IPSI Case Studies

- Over 75 case studies have been shared through IPSI's website and lessons learned have been synthesized into booklets for promoting sustainable resource use in SEPLS
- Multiple presentations at broad range of relevant events and meetings



Examples of IPSI Collaborative Activities

Indicators for resilience of socio-ecological production landscapes

To enable local communities to strengthen the resilience of their SEPLS

- engaging them in adaptive landscape management
- provides a framework to discuss both current conditions and potential areas for improvement

Toolkit development for the wider use of indicators



COMDEKS

The **Community Development and Knowledge Management** for the Satoyama Initiative Project

- To develop sound biodiversity management and sustainable livelihood activities to increase community resilience and to maintain, rebuild, and revitalize SEPLS
- 5-year partnership programme (2011-2016); Japan Biodiversity Fund contributing with 10 million USD



www.comdeksproject.com



The Satoyama Development Mechanism (SDM) 2013

Objectives:

- Promote the **implementation of activities** under the **IPSI Strategy and Plan of Action**
- Promote the **development of model practices** for living in harmony with nature
- Provide an incentive to **strengthen partnerships &** to generate a knock-on effect

Project types:

Community/ field-based project

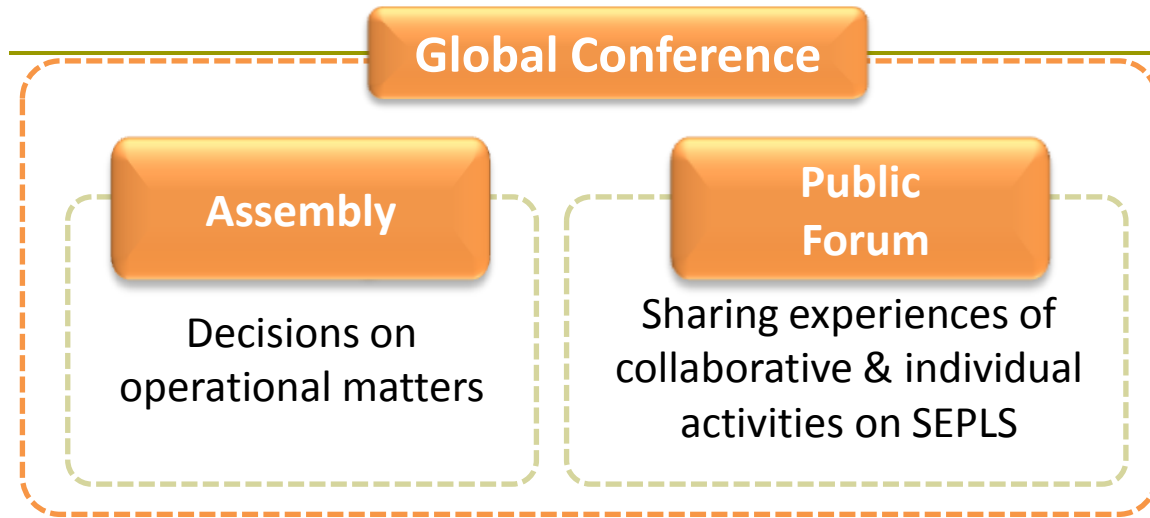
Research activates

Kick-start cooperation among IPSI members
(meetings, workshop, etc.)

Capacity building (education materials, etc)



IPSI Global Conferences



Four IPSI Global Conferences have been held, featuring presentations by experts from across the IPSI membership



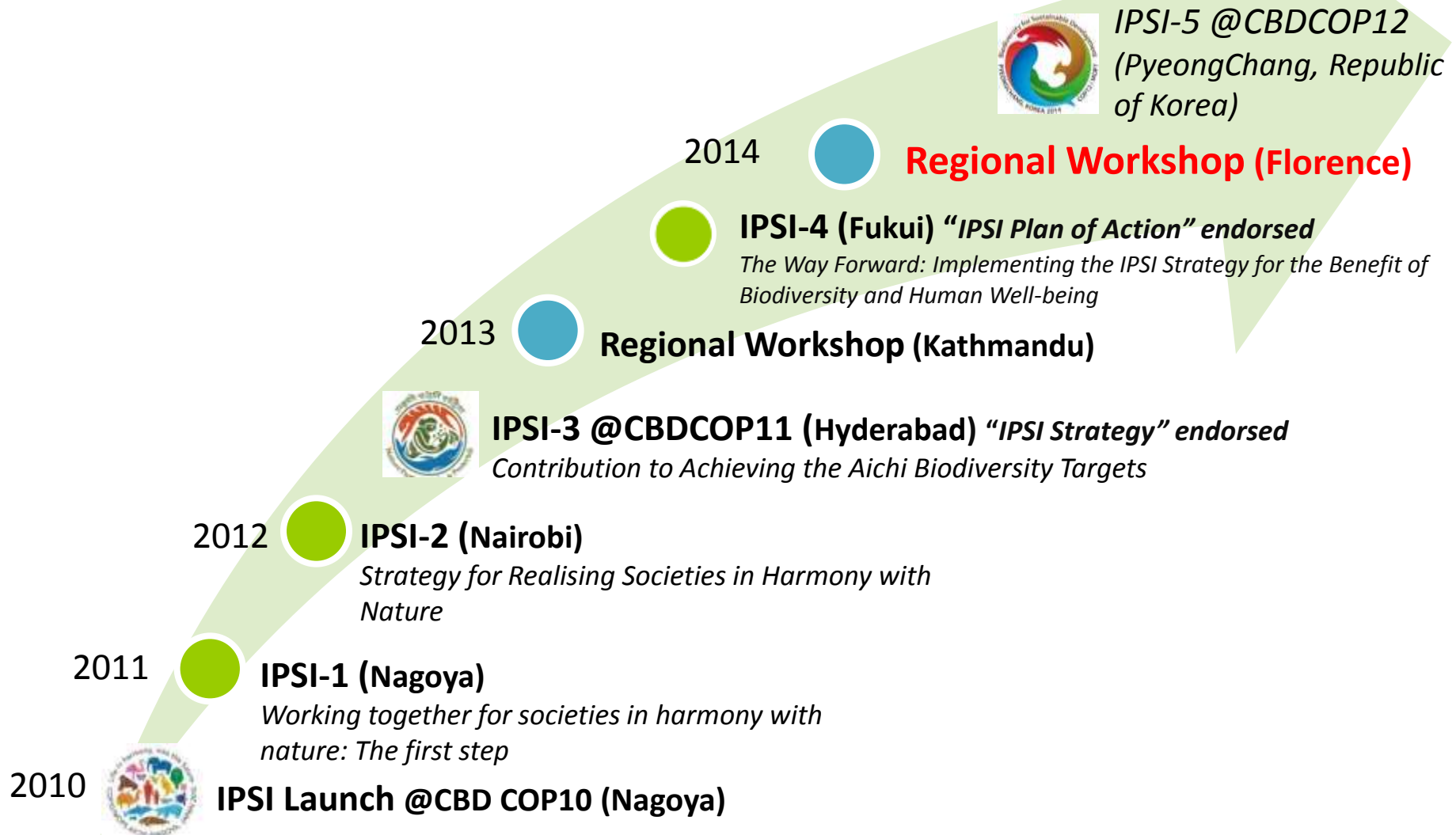
Satoyama Initiative Regional Workshop in Kathmandu, Nepal

(May 2013)

- Co-organized by the Ministry of Forests and Soil Conservation (MoFSC), Nepal and IPSI Secretariat
- Participated by 61 experts from 16 countries
- **Three objectives**
 - ✓ To share information and experiences from the Asian region relevant to the Satoyama Initiative
 - ✓ To further promote IPSI activities and understanding of the partnership in the region
 - ✓ To contribute to the further development of the IPSI Strategy and Plan of Action



Progress of IPSI



Introduction to Small Group Discussions

Workshop Theme:

*“Revitalizing production landscapes in Europe:
travel and dialogue for people and biodiversity”*

Purposes of the workshop

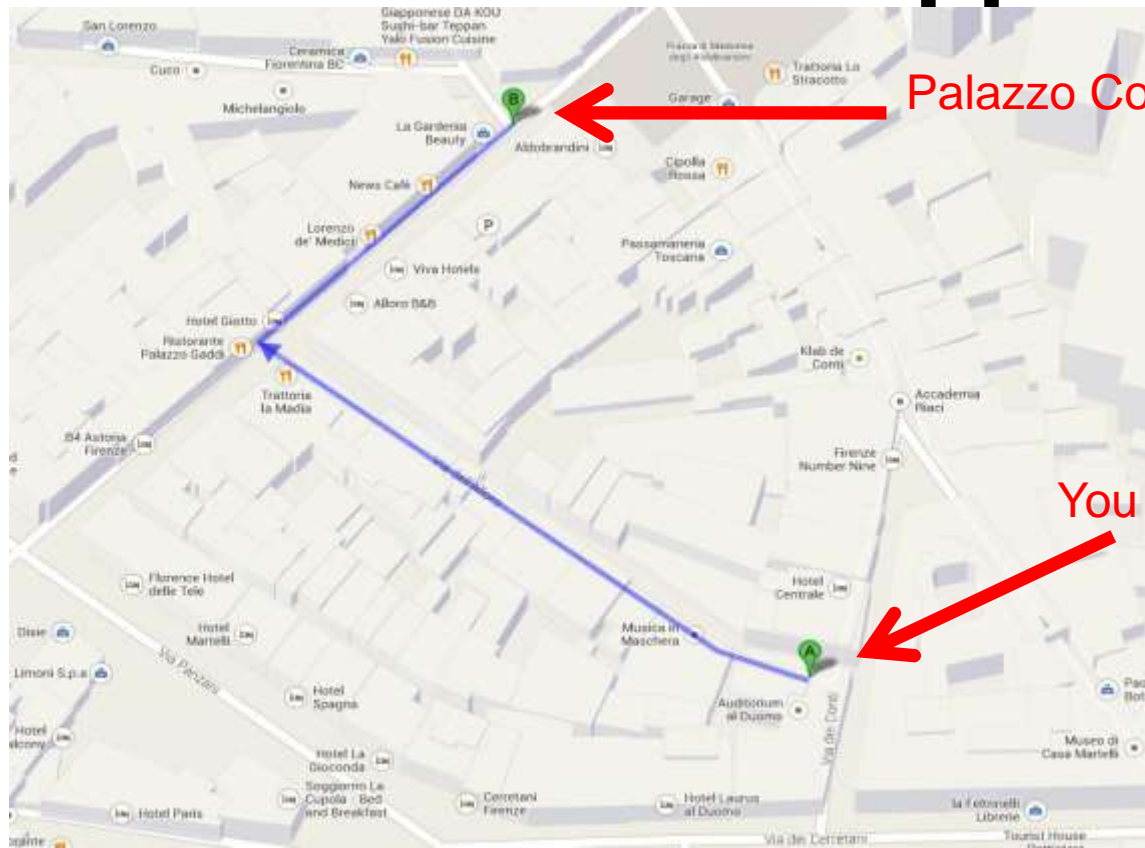
- To deepen understanding of the conservation and revitalization of socio-ecological production landscapes (SEPLS) in Europe **using responsible and sustainable models of travel and dialogue**
- To identify ways to **further promote** SEPLS in the future

Next Step: Forming small groups

- We will split into **three small groups** to maximize opportunities for discussion
- **Facilitators** will join each group
- **Rapporteurs** will assist the facilitators and take notes
- There will be one or two **short presentations** in each group

Forming small groups

- Venue for the small group discussion is **Palazzo Coppini**



Forming small groups

- Check your nametags for colored dots with a letter **K**, **B** or **Z**

Small Group Discussions: Facilitators

GROUP K:

Room: Aleksej Komech (first floor)

□ Dr. Nadesa Panicker Anil Kumar

- Director, M. S. Swaminathan Research Foundation,
Community Agrodiversity Centre

Small Group Discussions: Facilitators

GROUP B:

Room: Arest Beglaryan (first floor)

□ Mr. John Leigh

- Conservation Officer and Projects Manager, International Tropical Timber Organization

Small Group Discussions: Facilitators

GROUP Z:

Room: Mihály Zádor (ground floor)

□ Mr. Atsuhiko Yoshinaka

- Global Coordinator, Secretariat of the Convention on Biological Diversity

□ Dr. Yoji Natori

- Ecosystem Policy Manager and Vice President, Conservation International

Discussion Points

- What are some of the key issues for socio-ecological production landscapes and seascapes (SEPLS) in Europe, in light of the concept of the Satoyama Initiative?

Discussion Points

- What are some of the challenges and opportunities in promoting travel and interest in local traditions – and the products and services produced by these traditions – to promote sustainable management of SEPLS, creating mutual benefits for travellers and local residents?

Discussion Points

- What are possible future actions in the European Region to promote SEPLS that are sustainable and will attract people?

Discussion Points

- What lessons learned in Europe could be shared with other regions, and vice versa?

Presentations from Small Groups

- At the end of today's session, **one person from each group** will share today's discussion with the plenary
- At the end of tomorrow's session, **one person from each group** will present key points and insights to the plenary

Workshop Schedule

□ Today (27 May 2014)

12.00-12.20	Introduction to small group discussions
12.20-13.45	Lunch
13.45-14.00	Move to Palazzo Coppini
Small group discussion session 1	
14.00-17.00	Small group discussions
17.00-17.30	Break – Move back to Auditorium al Duomo
Plenary session 2	
17.30-18.00	Sharing of the first day discussion

□ Tomorrow (28 May 2014)

Small group discussion session 2	
09.00-10.30	Small group discussions (cont'd) – At Palazzo Coppini
10.30-11.00	Break (preparation for plenary) – Move to Auditorium al Duomo
Plenary session 3	
11.00-12.00	Presentations from each group + Q and A
12.00-12.30	Discussion and wrap-up

We will go to Palazzo Coppini at
13:45



Please enjoy your lunch!

<http://satoyama-initiative.org/en/>
isi@unu.edu