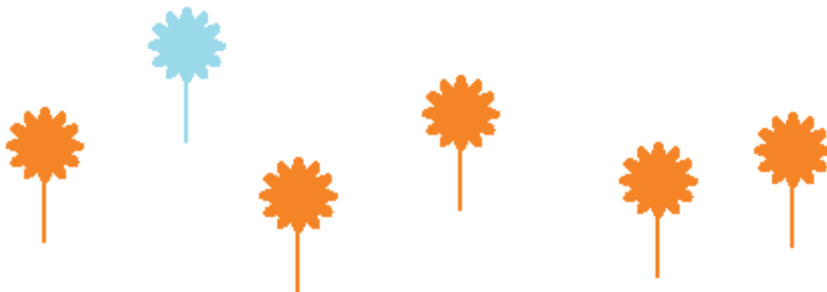


# Capacity building for the implementation of the *Satoyama Initiative*: a proposal

Kalemani Jo Mulongoy  
CBD Secretariat



# Capacity building:

What it is

**Process of developing and/or strengthening** skills, competencies, instincts, abilities, motivations and resources that individuals, communities, organizations, societies, nations etc. need so that they can solve problems, set and achieve objectives in a sustainable manner, live well, survive, adapt, upgrade their performances, improve livelihoods/well-being (UNDP, Wikipedia etc.)

## **Human:**

Understanding  
Knowledge  
Skills  
Competencies  
Motivations

## **Institutional & Infrastructural:**

Laws and regulations  
Governance  
Management structures,  
processes & procedures

**Financial  
resources**

**Well-being  
Livelihoods  
Poverty reduction  
Millennium Development Goals (MDGs)  
Sustainable development**

**Objectives of  
the Convention on Biological Diversity**



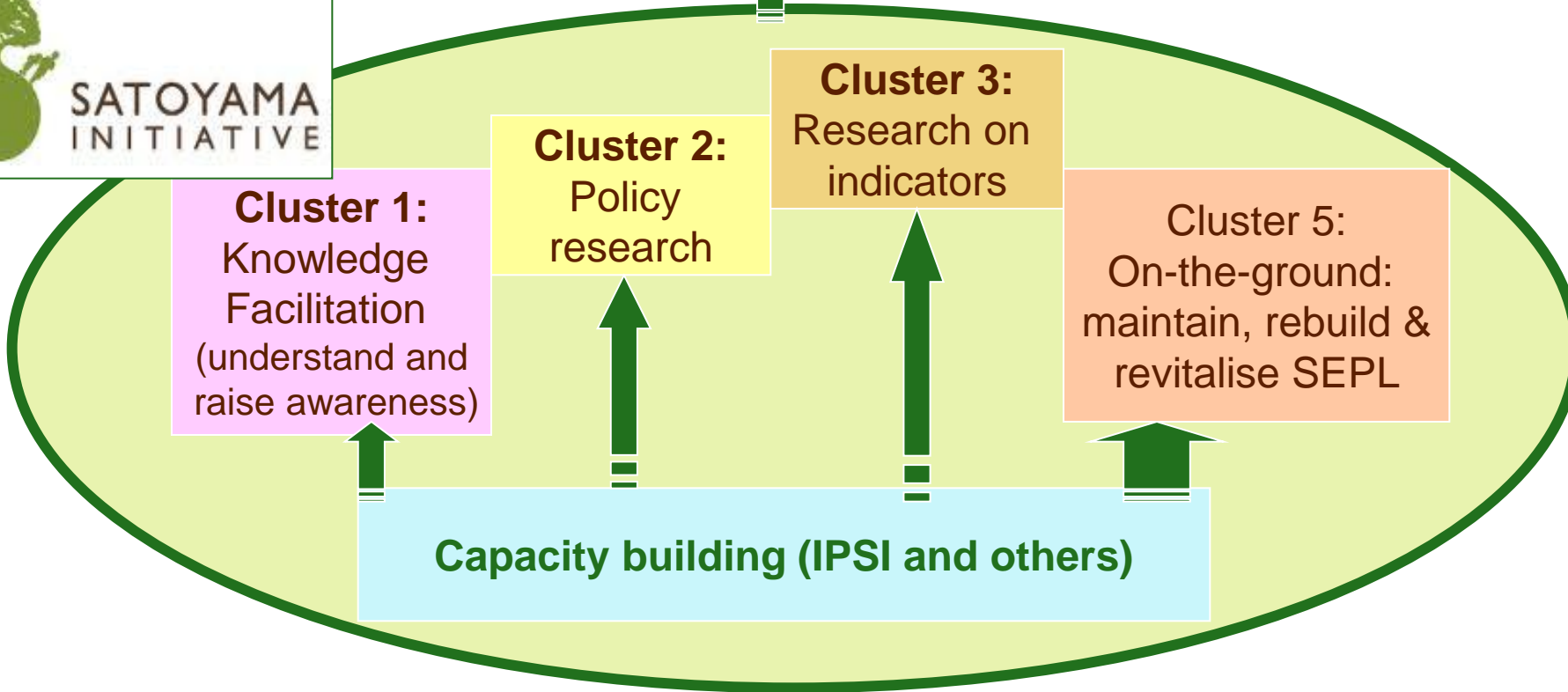
**Cluster 1:**  
Knowledge  
Facilitation  
(understand and  
raise awareness)

**Cluster 2:**  
Policy  
research

**Cluster 3:**  
Research on  
indicators

**Cluster 5:**  
On-the-ground:  
maintain, rebuild &  
revitalise SEPL

**Capacity building (IPSI and others)**



# Capacity building:

How it is done



## Approaches

- Sharing knowledge & information
- Training
  - ✓ Informal: e-learning, seminar, workshops, cooperation/collaboration, networking etc
  - ✓ Formal: school, university curricula, graduate and post graduate, etc
- Funds

## Examples from IPSI

- Horizontal "Contact Learning" zone/Cusco, Peru; SCBD; UNU-IAS
- Training
  - ✓ Landscape Measures Resource Center/EcoAgriculture Partners; SCBD
  - ✓ UNCRD/JICA Training Course and seminars; Institute of Environment Rehabilitation and Conservation
  - ✓ Japan-Asia Satoyama Education Initiative (Master's course)/ University of Tokyo
- Funds: JICA , GEF, Japan Fund



# Roadmap for capacity-building



Implementation

SATOYAMA  
INITIATIVE

Capacity needs assessment  
& programme designing



# Roadmap for capacity-building

- **Need assessment**
  - ✓ Target groups and their requirements;
  - ✓ Document existing practices, knowledge and experiences
  - ✓ Assessment of ongoing capacity-building activities and their effectiveness,
  - ✓ Gap analysis (knowledge, skills, information, laws, policies, management, manpower, awareness)
  
- **Planning and designing with clear goals and SMART targets**
  
- **Establishment of enabling environment and mechanisms:**
  
- **Implementation and monitoring of successes/performance**



# Roadmap for capacity-building (ctd)

- **Need assessment**
- **Planning and designing with clear goals and SMART targets.** Emphasis on:
  - ✓ capacity for assessing existing and abandoned SEPL, status, and possibly trends ecological and socioeconomic value, threats/pressures
  - ✓ hard and soft technologies
  - ✓ financial planning, fund-raising and management
- **Establishment of enabling environment and mechanisms:**
- **Implementation and monitoring of successes/performance**





# Roadmap for capacity-building (ctd)

- **Need assessment**
- **Planning and designing with clear goals and SMART targets**
- **Establishment of enabling environment and mechanisms:**
  - ✓ Integration of SI objectives in wider programmes, plans and strategies relating to poverty reduction and sustainable development(NBSAPs, NAPA etc.)
  - ✓ National focal points for the Initiative
  - ✓ (Sub-)Regional nodes/coordinators for training
  - ✓ Technical clinics
  - ✓ CEPA programmes
  - ✓ Compilation and development of learning tools and materials such as e-learning modules
  - ✓ Interactive websites within existing national and regional CBD clearing house mechanisms
- **Implementation and monitoring of successes/performance**

# Roadmap for capacity-building (ctd)

- **Need assessment**
- **Planning and designing with clear goals and SMART targets**
- **Establishment of enabling environment and mechanisms:**
- **Implementation and monitoring of successes/performance**
  - ✓ using *inter alia* indicators of resilience and
  - ✓ ensuring that capacity building is linked to actual implementation of the Initiative's activities on the ground





# Capacity-building is the engine of the SATOYAMA INITIATIVE

Give a man a **fish** and you feed him for a **day**.  
**Teach** a man to **fish** and you feed him for a **lifetime**.

(Chinese proverb)

