

Building capacity in satoyama landscapes: The Landscape Measures Approach



EcoAgriculture Partners
www.ecoagriculture.org

IPSI
March 2011



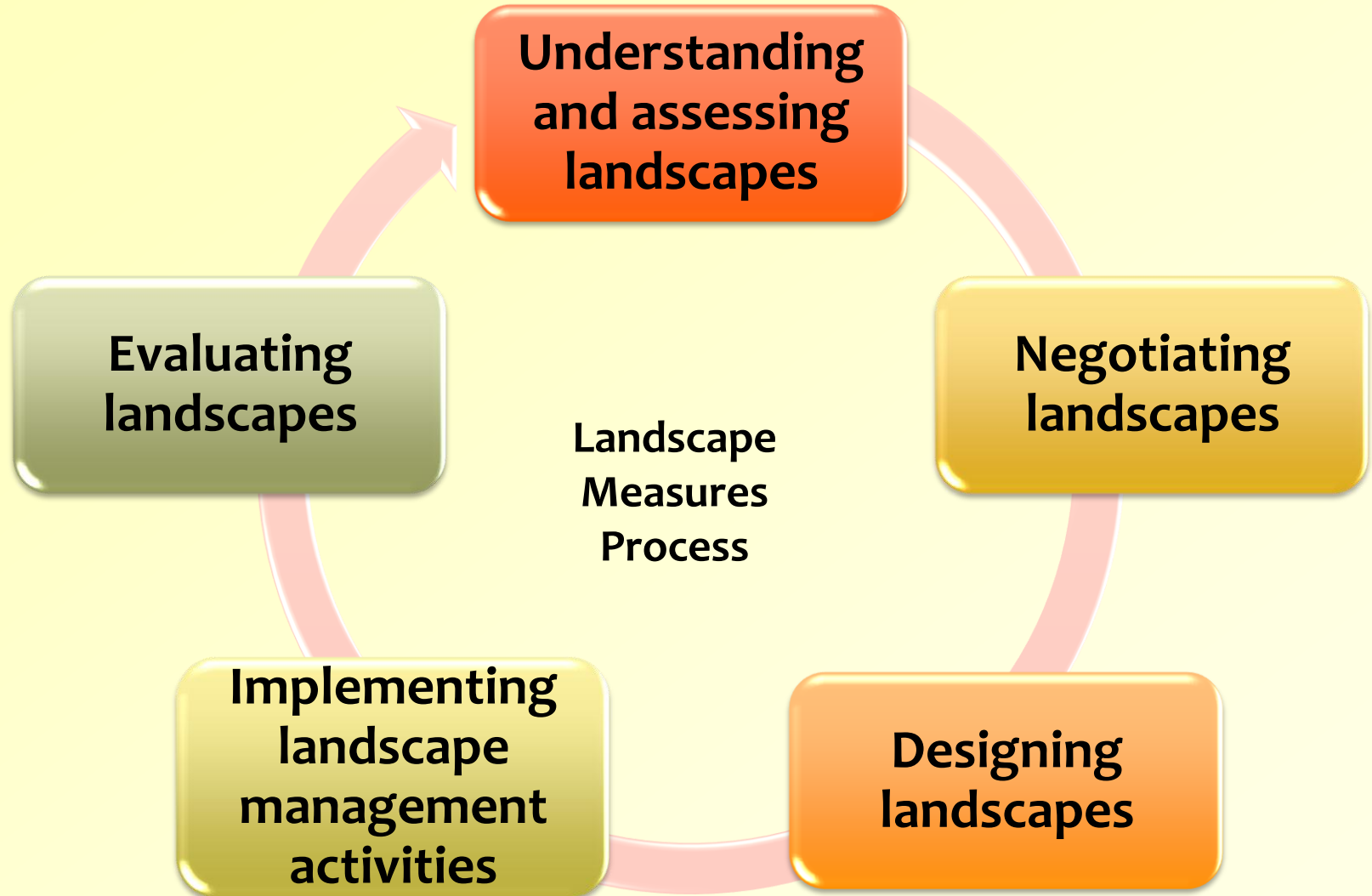
Elements of the Landscape

Measures approach

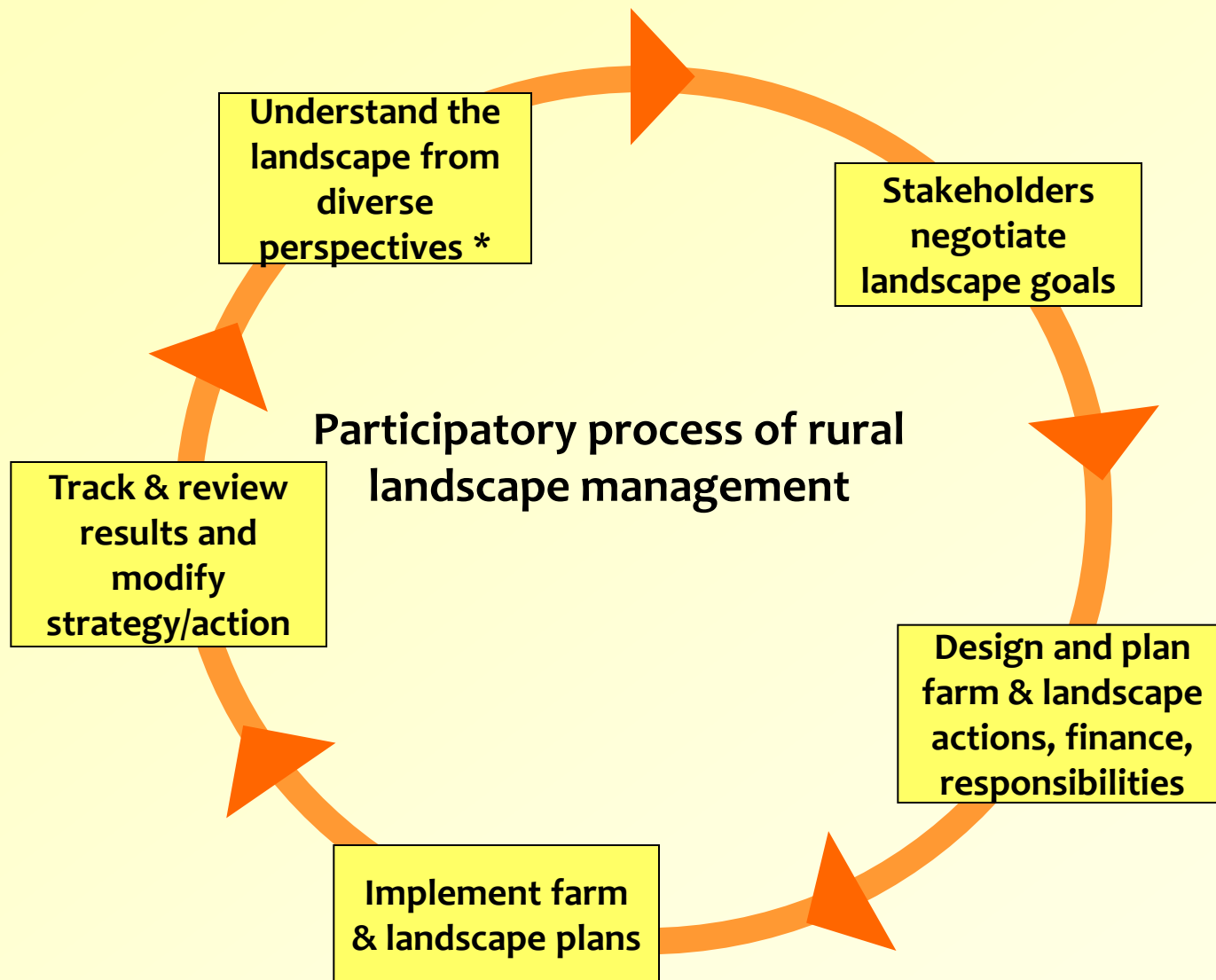


- Processes and tools for landscape negotiation and evaluation
 - Agricultural production
 - Ecosystem services & biodiversity
 - Rural livelihoods
 - Institutions
- Stakeholder guided adaptive management promoted by a social learning process

The Landscape Measures process



Process of multi-stakeholder ecoagriculture landscape management



Core competencies for Landscape Measures



Landscape understanding – Understanding the location, sources and flows of biophysical and socioeconomic resources in the landscape and being able to communicate this information with other stakeholders.



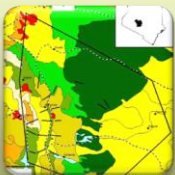
Landscape negotiation – Building trust and alliances between stakeholders for improving landscape governance and building multi-institutional platforms.



Landscape design – Planning the configuration and nature of changes and interventions for strengthening the multiple functions of the landscape, for example, crop diversification or delineation of protected areas.



Collaborative implementation – Coordinating efforts and programs between institutions and local actors for integrated and efficient management.



Landscape evaluation and monitoring – Identifying quantifiable indicators, establishing a baseline and continual monitoring program of the changes in the landscape. This often requires bringing in technical experts from outside the landscape.



Tools developed for participatory, multi-stakeholder landscape management



- ❖ **Multi-stakeholder group exercise “20 Questions on Landscape Performance”**
- ❖ **Participatory mapping of farming & biodiversity in the landscape**
- ❖ **Assets, incomes and market opportunities from landscape perspective**
- ❖ **Institutional mapping**
- ❖ **Ground-based photo monitoring**

1) Landscape Measures Resource Center: Improve for Satoyama landscapes



Home

Mar 25th, 2008 by leb3

The Landscape Measures Resource Center (LMRC) is a collection of ideas and tools to aid in managing areas where interests in protecting biodiversity, producing food and securing rural livelihoods converge. The LMRC is rooted in the premise that measurement enhances management. Learning to measure how landscapes perform in delivering food, biodiversity and livelihood outcomes is anticipated to endow management systems with the capacity to sustain these multiple functions while reducing or reversing the degradation of natural resources.

The creators of the LMRC recognize producers of crops, livestock, fish and forest resources as stewards of ecosystems and biodiversity. The LMRC is designed to bring the knowledge of these natural resource managers and their supporters to bear on the challenges of landscape measurement and management.



Photo: Sajal Sthapit

The LMRC is organized around six units that frame a process for assessing the performance of integrated (conservation and production) landscapes. The LMRC links elements of the landscape assessment [process](#) to a variety of tools and resources that enable the [practice](#) of landscape measurement. [Case studies](#) illustrate the contexts in which LMRC may be a helpful resource, as well as the use of many tools. A [glossary](#) defines key terms.

For a guided tour of the LMRC, [click here](#). To learn how to offer feedback and contribute content to the LMRC, [click here](#). For information about partners and sponsors, [click here](#).

Search for:

Home

About

Partners and Sponsors
Tour of the LMRC

Process

Unit 1 Defining the approach
Unit 2 Engaging stakeholders
Unit 3 Creating performance goals and criteria
Unit 4 Choosing indicators
Unit 5 Establishing a baseline
Unit 6 Tracking change

Practice

Conceptual tools
Communication tools
Landscape planning tools
Scoring tools
Data collection tools
Gender analysis tools
Spatial analysis tools
Trend analysis tools

Case Studies

Africa
Asia
Latin America
North America

Glossary

Contribute

How to contribute
Login to comment
Discussion forum

www.LandscapeMeasures.org

[Web-based learning hub](#)

- [Process](#)

- [Tools](#)

- [Cases](#)

- [Glossary](#)

- [Community of practice](#)

-



2) AgricultureBridge: add multi-media cases on Satoyama, university use



www.AgricultureBridge.org

- ❖ EcoAgriculture Partners
- ❖ Cornell University
- ❖ Univ. of California-Berkeley

- Multi-media educational tools on landscapes (10 videos)
- University curriculum across disciplines

3) Partner with IPSI in capacity- building platform



- ❖ Leadership development (multi-sector)
- ❖ Technical assistance to landscape initiatives
- ❖ Thematic training:
 - Payments for ecosystem services
 - Climate adaptation
 - Landscape tools
- ❖ Ecoagriculture/IPSI Conference trainings