

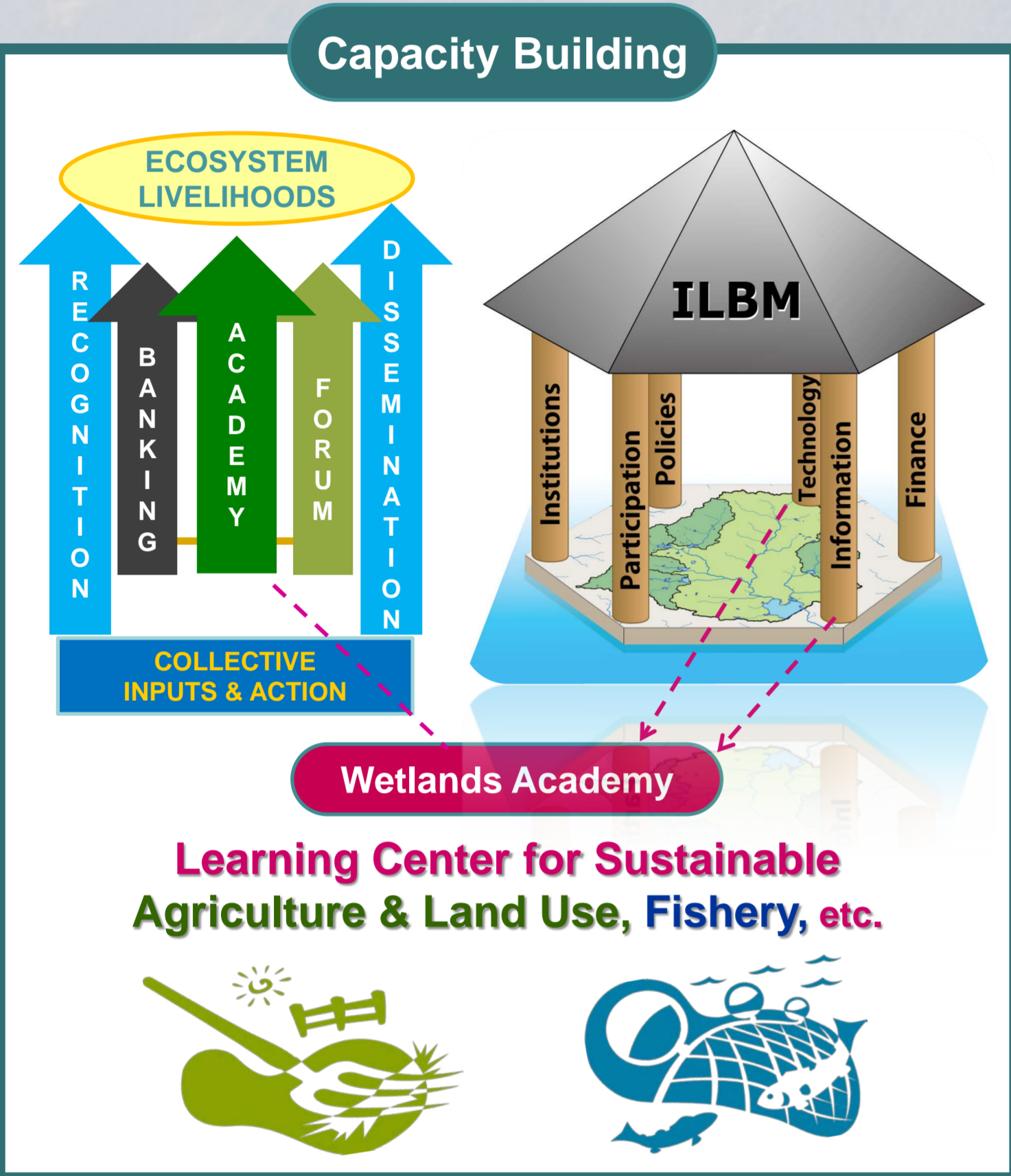
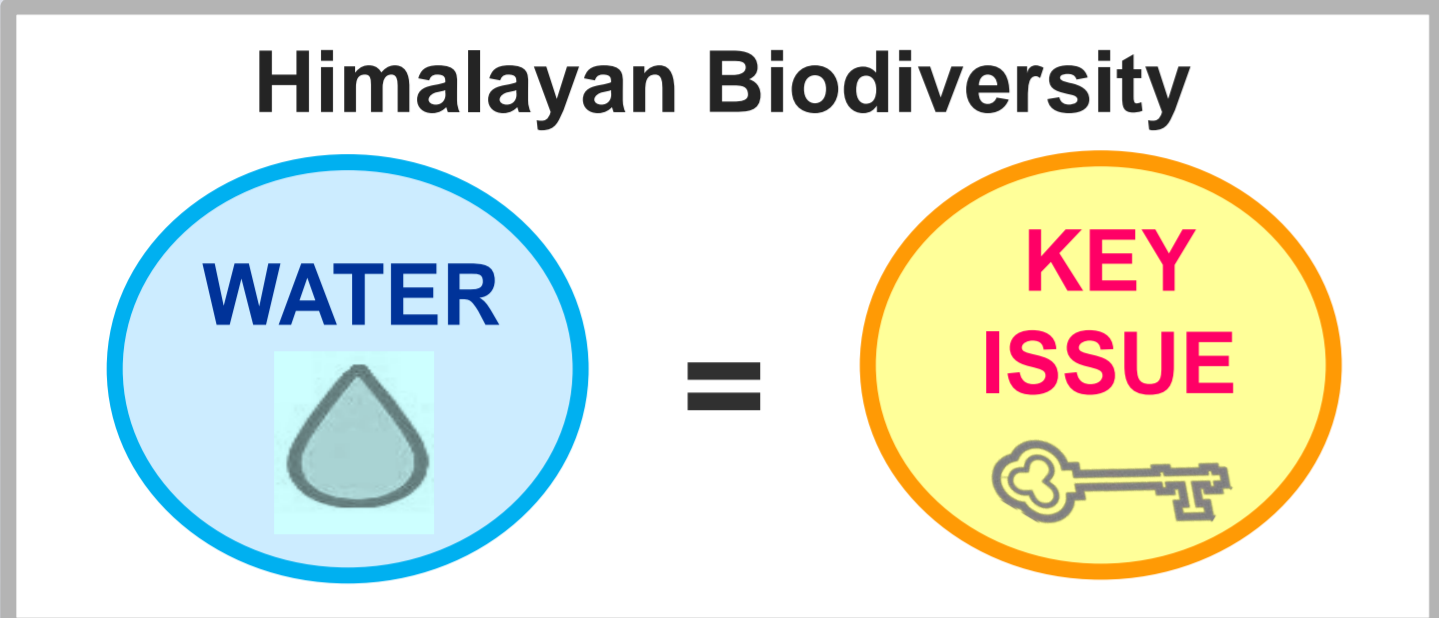
Governance Enhancement for Biodiversity Conservation of Himalayan Lakes and Wetlands



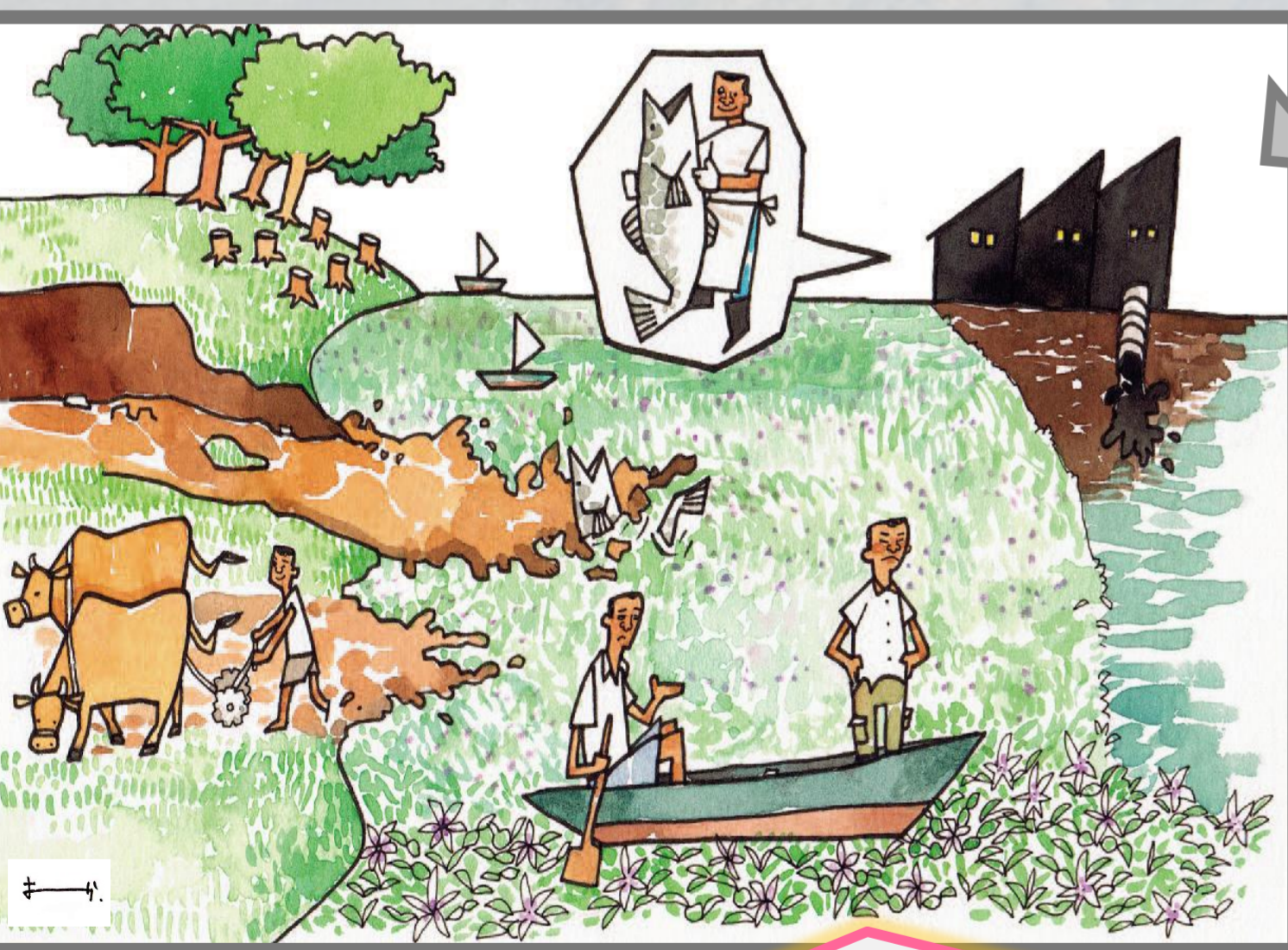
International Lake Environment Committee Foundation

Save Water  Save Lakes

1091 Oroshimo-cho, Kusatsu, Shiga, 525-0001, Japan / www.ilec.or.jp / www.facebook.com/ilec.english / infoilec@ilec.or.jp

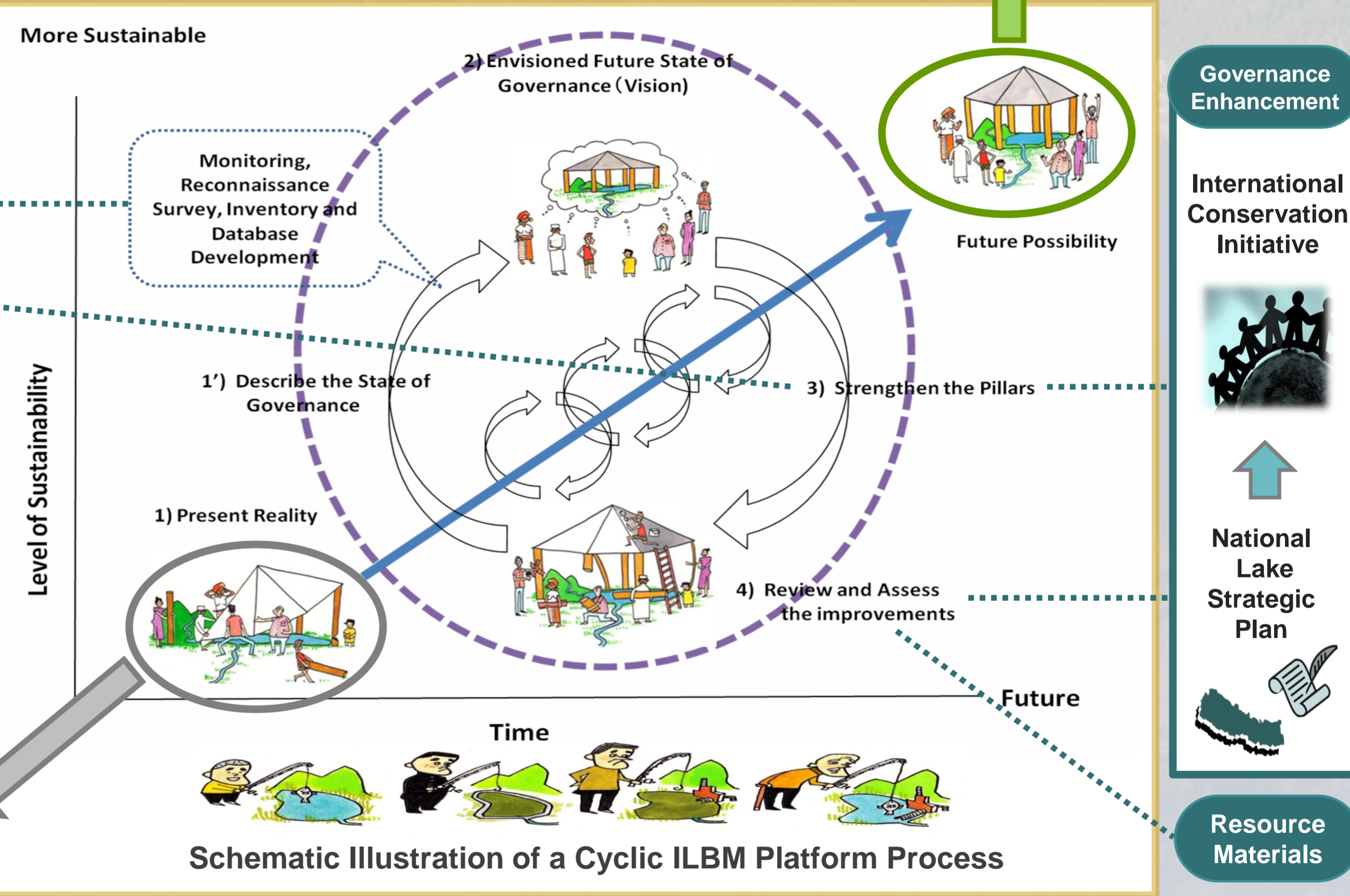
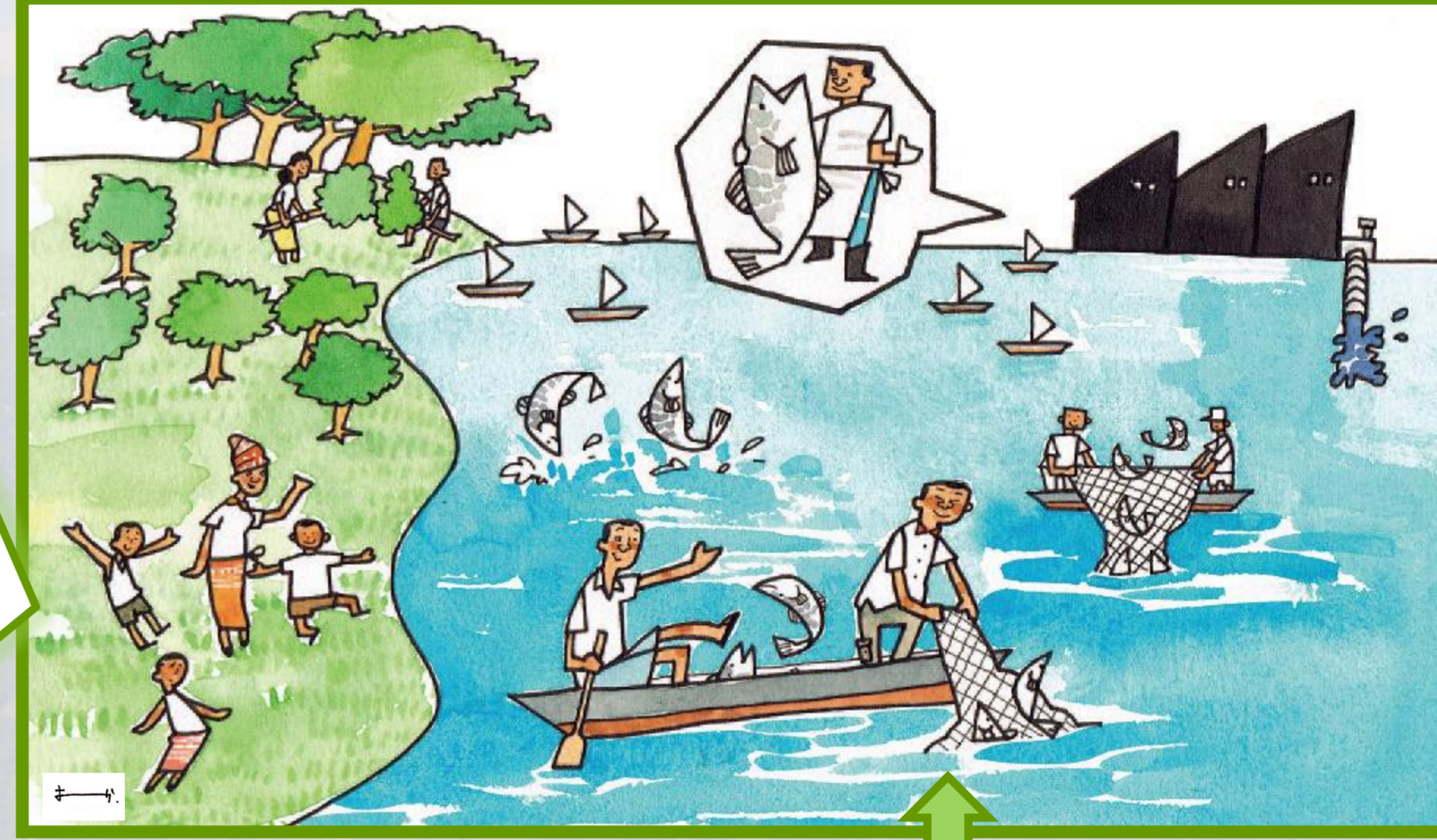


ILBM (Integrated Lake Basin Management) as a Guiding Platform for Biodiversity Governance Improvement



Ongoing Challenges: Loss of biodiversity and ecosystem, lack of education and governance for sound environmental management and poverty alleviation, etc.

Future: Sustainable Livelihood and Biodiversity



Governance Enhancement

International Conservation Initiative

National Lake Strategic Plan

Resource Materials

Summary: Himalayan lakes and wetlands in Nepal, including a number of biodiversity hotspots, are in critical condition, yet, there is not robust lake/wetland basin governance functioning in this country. To address this issue, ILEC promotes **the Integrated Lake Basin Management (ILBM)**, or continuous improvement of lake basin governance, **that integrates Institution, Policy, Participation, Science, Technology and Finance** to assist local stakeholders in their sustainable basin management. This conceptual framework of ILBM is also being reflected in the principle of the Wetlands Academy to be established in Pokhara by a local NGO, CODEFUND (<http://codefundnepal.org/>). In collaboration with CODEFUND, ILEC is aiming to provide intellectual and technical support for the Academy, as well as implementing ILBM in a small lake, Dipang, which receives much less attention in terms of conservation/governance intervention. These environmental capacity building and hands-on activities will eventually contribute to a national lake/wetlands conservation plan in Nepal as a bottom-up initiative, which in turn will also grow into an international conservation initiative for Himalayan lakes/wetlands.

PUBLICATIONS on lake basin management are downloadable for free from www.ilec.or.jp/en/pubs.

