

# Biodiversity Strategy 2020 of Aichi, and Action Plan~Toward achieving CBD Aichi Biodiversity Targets~

## Collaborative efforts toward "Coexistence between People and Nature"

### Vision

#### Realizing "Coexistence between People and Nature in Aichi"

Increase awareness of Biodiversity and importance of conservation to ensure the appropriate wildlife and their habitat in collaboration with various citizens.

### Mission 2020

#### Take effective and urgent action to halt the loss of biodiversity

By 2020, in addition to take concrete action to halt loss of biodiversity, effectiveness through efforts to achieve its goals will be accountable. The mission objective will be carried out in collaboration with various citizens by making full use of their capacities.

### Aichi's Unique Efforts

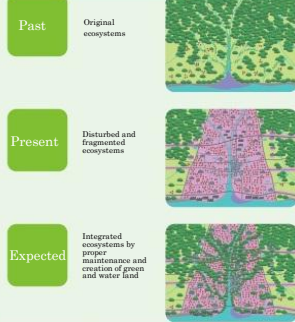
#### Aichi Method

Aichi Method is to realize society in harmony with nature in close cooperation with multiple stakeholders, such as citizens, private sectors, civil society and public administration while conserving and create habitats toward the common objective.

#### Ecological Networks

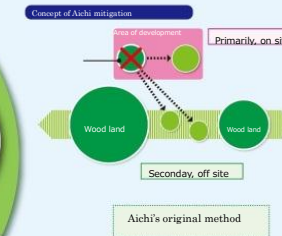
Restoration effort of fragmented ecological networks has been undertaken by multiple stakeholders.

##### Issue of creating stable ecological networks

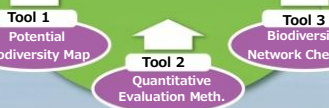


#### Aichi Mitigation

Aichi's unique scheme to mitigate negative impact for ecological networks by offering alternative land and spaces.

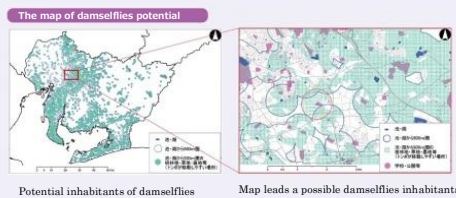


## Ecological Networks Aichi Mitigation



#### Tool 1 Map of Biodiversity Potential, Aichi

Aichi created a map of biodiversity potential in 2010 that demonstrates important areas to enhance biodiversity. By using this map, regional multiple stakeholders share common target of biodiversity conservation.



#### Tool 2 Aichi Mitigation Quantitative Evaluation Methodology

This methodology marks score by assessing effectiveness of biodiversity conservation. The efforts of conservation will be visualized.



#### Tool 3 Biodiversity Network Checklist

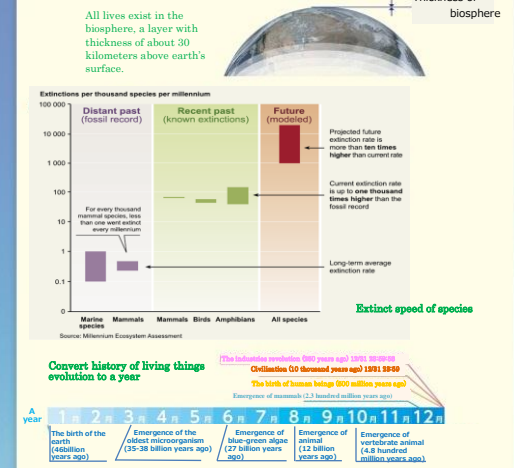
The checklist helps to ensure consistency and completeness in carrying out a conservation activity to prioritize an effective measures.



## Biodiversity Crisis -Tipping point in our lives-

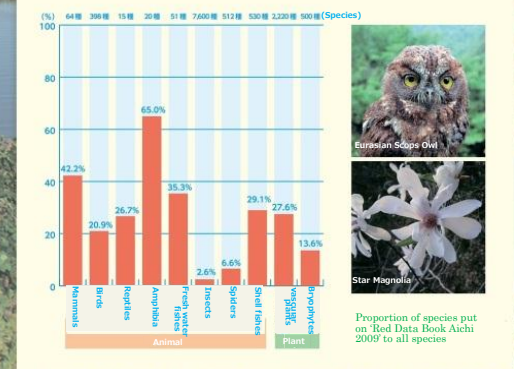
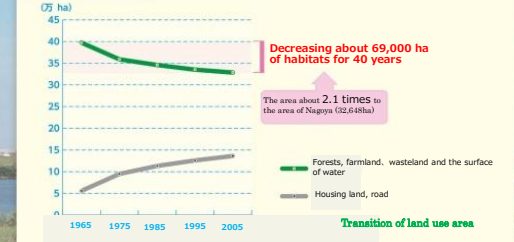
### Biodiversity crisis on the earth

Our lives and industries are blessed by proper ecosystems. On the other hand, our daily lives have adverse effects on biodiversity. As a result, many species becoming extinct. Biodiversity has been disturbed for the last several hundred years.



### Biodiversity crisis in Aichi

Habitats are decreasing in Aichi. 680 plants and 528 animals are on Red Data Book Aichi 2009'.



## Remarkable achievement in COP10

Tenth meeting of the Conference of the Parties to the Convention on Biological Diversity (CBD) was held in October, 2010 in Nagoya, Aichi. One of the results was adopting 'the Strategic Plan for Biodiversity 2011-2020 (the Aichi Biodiversity Targets)'. In order to contribute to the achieving of CBD's Aichi Biodiversity Targets, the Aichi Biodiversity Strategy 2020 was adopted.



### Strategic Plan 2011-2020 "Aichi Biodiversity Targets"

Long-term Vision: toward 2050 "Living in harmony with nature"

#### Mission 2020

Take effective and urgent action to halt the loss of biodiversity

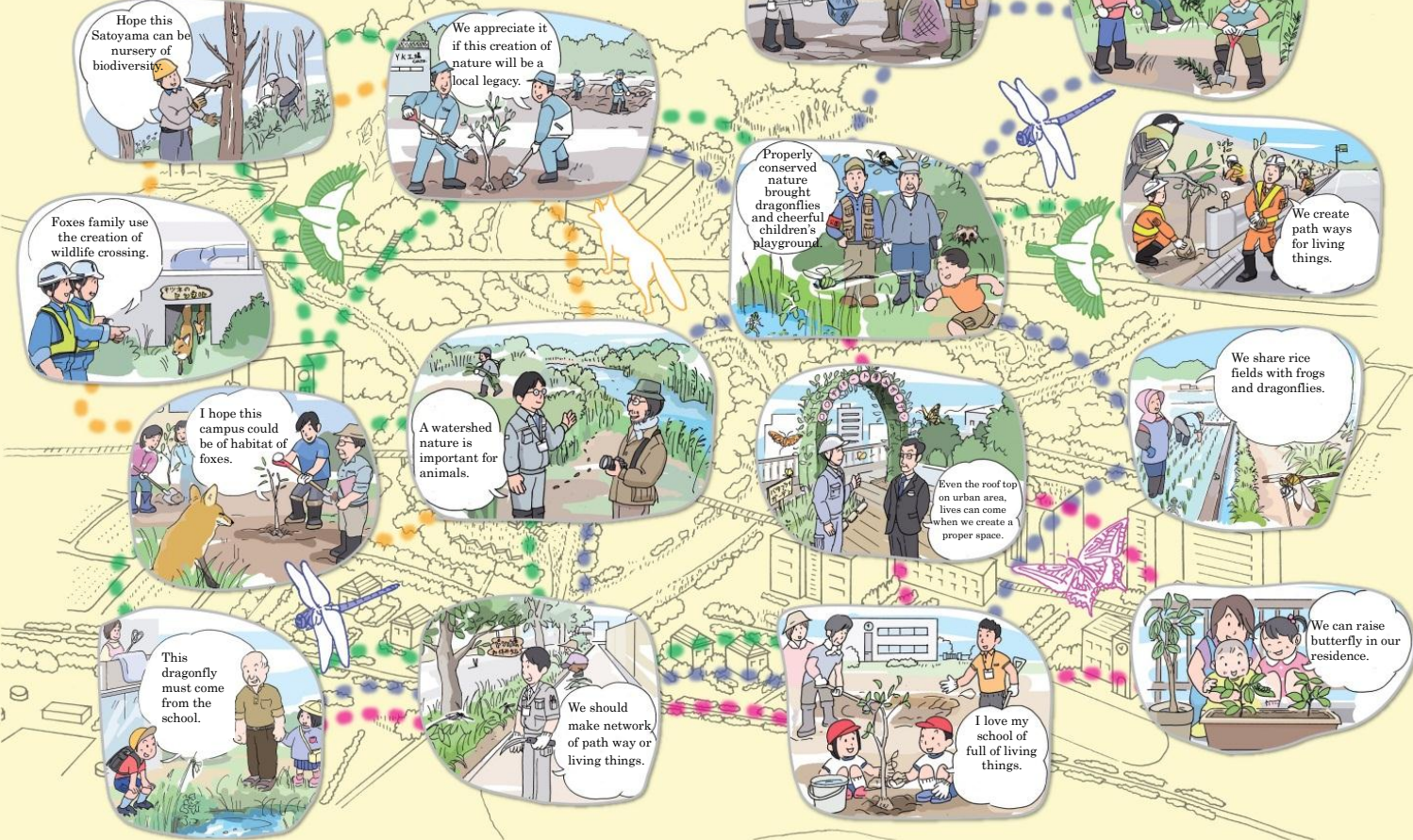
5 strategic goals and 20 specific goals

Aichi Prefecture

## Collaborative efforts toward "Coexistence between people and nature"

### The relationship between lives enhances bonds

Aichi believes the realization of "coexistence between people and nature" is precious happiness. We then suggest various people begin to work together to restore ecosystems. Let's rehabilitate rich natural environment in our daily lives.



## Action Plan Effort toward realizing 'coexistence between people and nature'

Aichi prefecture promotes actions in collaborating with residents, companies, civil societies and government of municipalities as follows:

Mainstay of action plan	Major items
A Creating positive ecological networks	A-1 Conservation of important habitats
	A-2 Conservation and restoration of habitats in various areas
	A-3 Promotion to create positive ecological networks
B Harmonious balance between economic growth and biodiversity	B-1 Promoting Aichi mitigation
	B-2 Promoting biodiversity conservation and sustainable use in private sector
	B-3 Promoting conservation and sustainable use of biodiversity in agriculture, forestry and fishery sector
	B-3-1 Agriculture
	B-3-2 Forestry
B-3-3 Fisheries	
B-4 Securing funds to protect blessing of nature	
B-5 Dealing with global warming	
C Preservation and control of wildlife	C-1 Protection of rare fauna and flora
	C-2 Enforcement of alien species control
	C-3 Suitable conservation and proper control of wildlife
D Sharing the value of biodiversity	D-1 Promoting environmental education
	D-2 Promoting investigation and research on biodiversity
E Participation and collaboration of various stakeholders	E-1 Promoting contact with nature
	E-2 Promoting participation and collaboration with various stakeholders
	E-3 Promoting comprehensive and interdisciplinary efforts

### Expansion into local communities

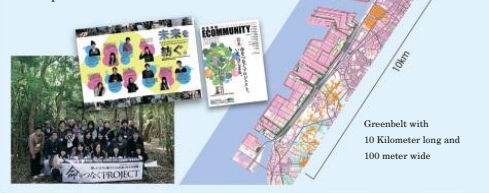
Collaboration for awareness, conservation and networking

In order to promote comprehensive collaboration between diverse stakeholders for the conservation of biological diversity with common understanding of the future, we are promoting the establishment of 'ecological network councils' within 9 sub-regions.



### Chita Peninsula Ecological Network Council

Ecological network council was set up to promote stable ecological networks with local university, private company, civil society and citizens. For example, in the coastal area where major industries are located, 11 companies and students publish free magazines to widely disseminate the information of ecological network to the public.



### Owari Tobu Hills Ecological Network Council

23 of universities in this area set up lectures under the ecological networks themes in cooperation with residents, companies and public administration. In addition, restoration on this nature and habitats has been undertaken.



### Nishi-Mikawa Ecological Network Council

The project has promoted sustainable environment and positive economic cycle in the Nishi-Mikawa area.

