

Building resilience in high biodiversity areas for nature and people

IPSI 10th Conference, Riobamba, Ecuador, 5 March 2026

Dr. Paule Gros
BiodivEarth CEO & Co-Founder



BIODIV Ξ ARTH

paulegros@biodivearth.org

www.biodivearth.org

Maintain highly diverse and functional Socio-ecological Production Landscapes and Seascapes over the long term



Convene

What: Community of Practice of sites, conservation initiatives, and researchers

Why: To facilitate peer exchange, and consolidate joint knowledge and know how



Understand

What: Key factors of resilience in successful management schemes

How: Conducting analyses of perceived resilience factors and long-term quantitative datasets

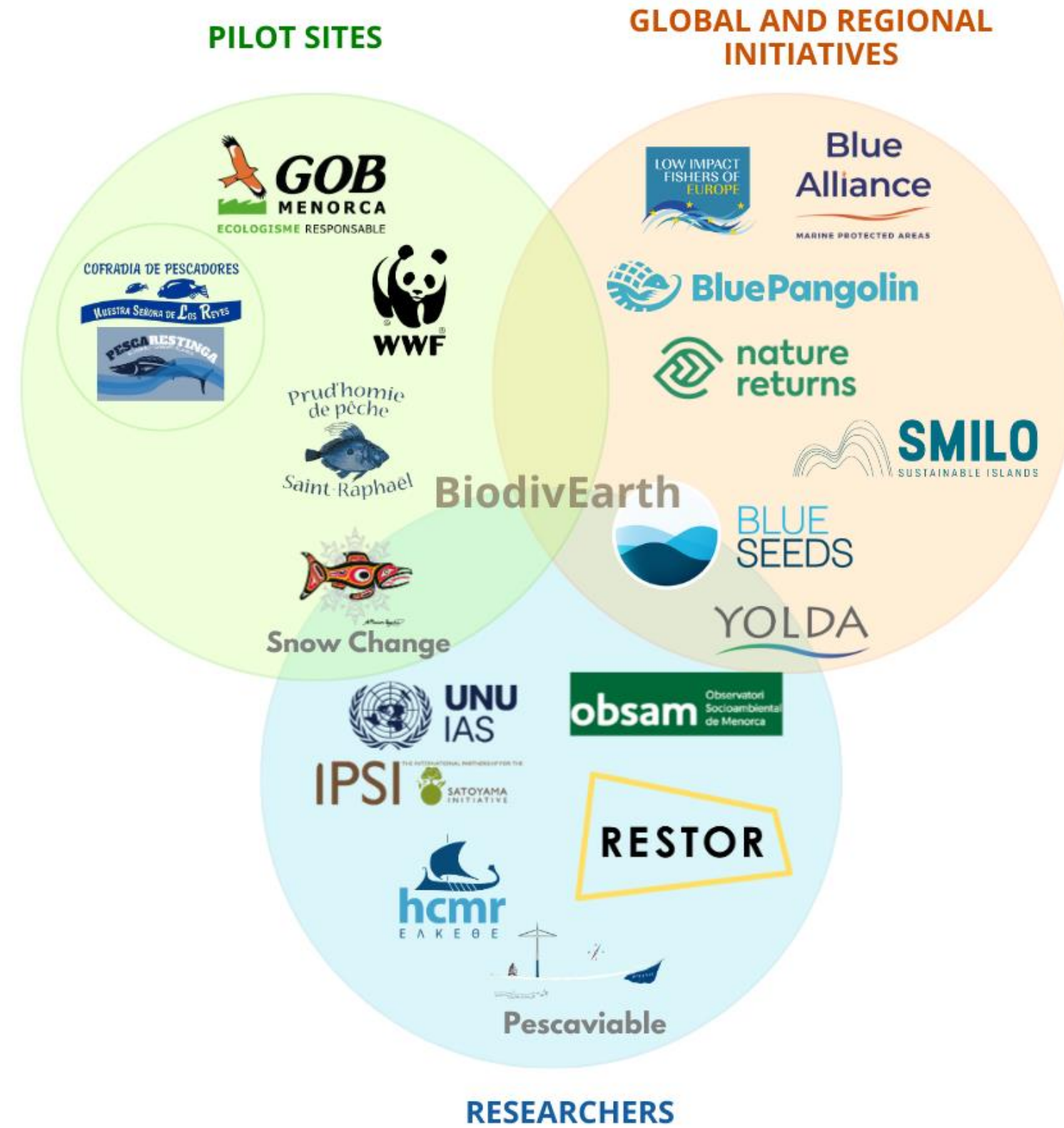


Accelerate

What: Uptake of project's results and insights

How: Contributing to diagnose, strengthen and monitor resilience in sites beyond the CoP (toolkit)

The Community of Practice



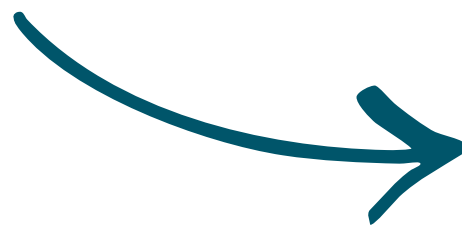
Three deliverables



Catalogue of solutions

Diagnostic tool

Dashboard



Preliminary outcomes? Challenges?

Links with the IPSI Strategy and Plan of Action 2023-2030



- Knowledge Co-Production & Uptake: Applied resilience tools
- Institutional Frameworks & Capacity: Inclusive peer learning
- Area-Based Conservation & Restoration: Proven stewardship models
- Sustainable Value Chains: Local, resilient livelihoods
- Scalable IPSI Impact: Transferable solutions



Thank you!



BIODIV ϵ ARTH

paulegros@biodivearth.org

www.biodivearth.org