



**UNU
IAS**

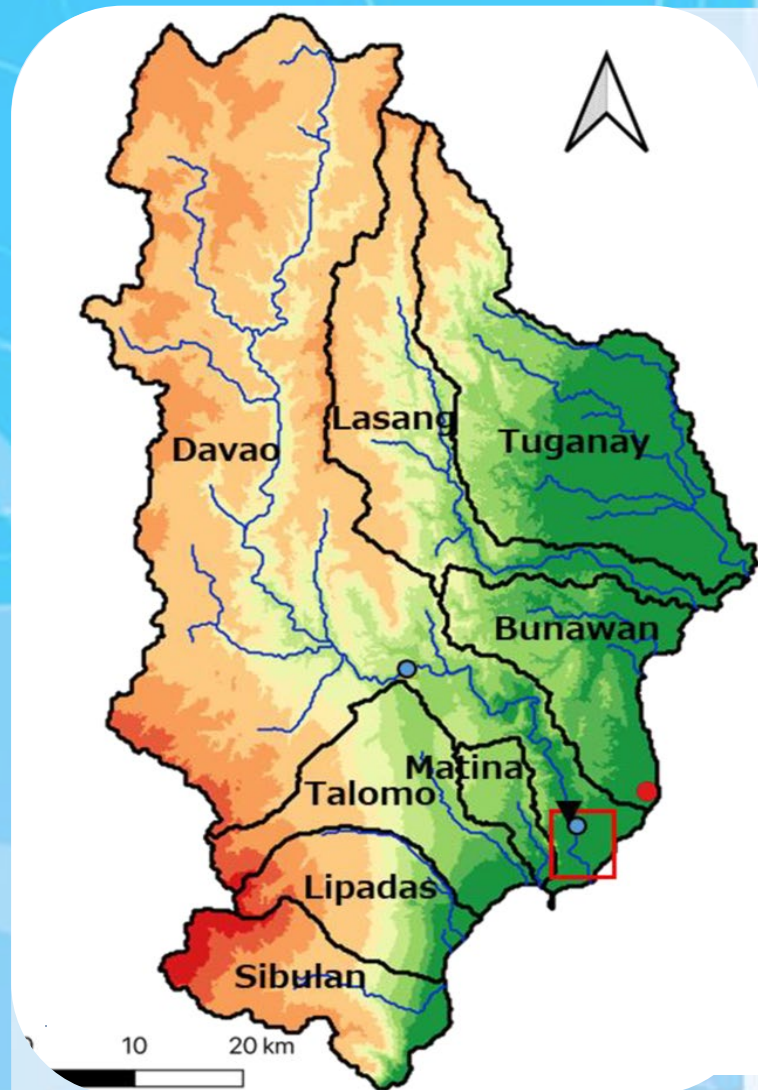


**SATOYAMA
INITIATIVE**

Integrating Satoyama Principles into River Basin Governance: The HELP Davao Network Initiatives

Dr. Anthony C. Sales, PFT, CESO III
Corporate Secretary, HELP Davao Network
Regional Director, DOST Davao Region

The Context: Davao River Basin as a SEPLS



Davao River Basin as a SEPLS



Upland Forests → Agricultural Areas → Coastal Zone



Interdependent Socio-Ecological System



RIDGE-TO-REEF
CONNECTIVITY



Ecosystem



Human Production



Water System

Urban-Ecological Interface

Emerging Pressures



Rapid
urbanization



Climate
risk exposure

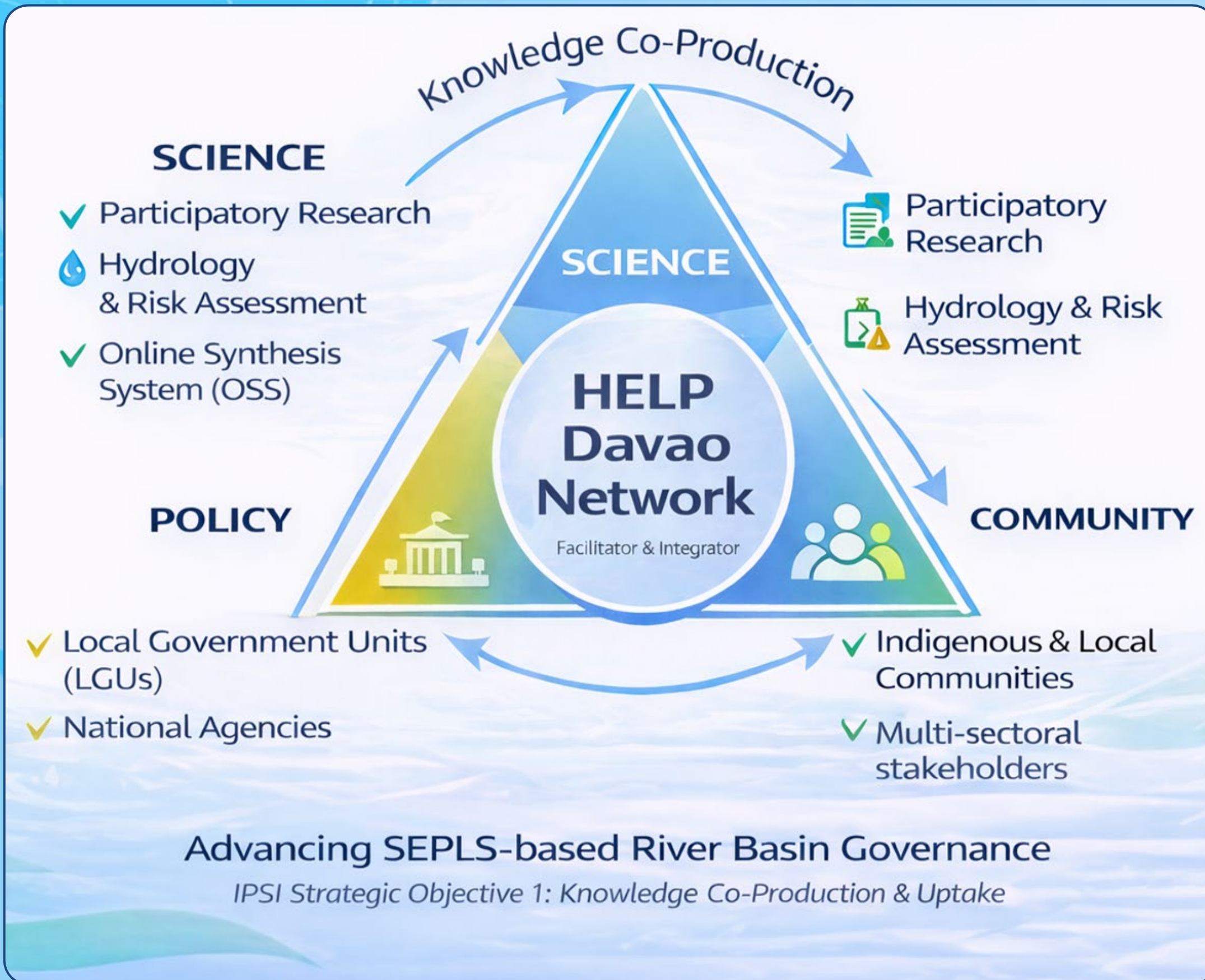


Governance
complexity

Role of HELP Davao Network

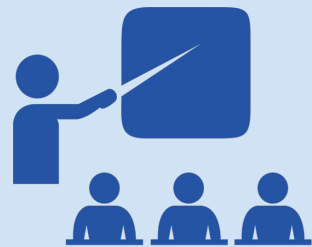
- Science - based guidance in water governance
- Multi - stakeholder coordination platform
- Capacity strengthening
- Linking local governance to international expertise

HELP Davao Network Approach



Key Initiatives & 2026 Forward Program

Implemented Activities



Multi - sectoral river basin governance workshops



Hazard and Risk Identification using Online Synthesis System (OSS)



Participatory research on water security and resilience



Stakeholder dialogues to harmonize mandates

Aligning hydrological science + Indigenous & local knowledge

2026 Planned Activities

Sustainable Water Governance Training

- IWRM Training with SEPLS Integration

Davao River Basin Health Scorecard

- Revival of monitoring & evaluation framework

Water Safety Integration

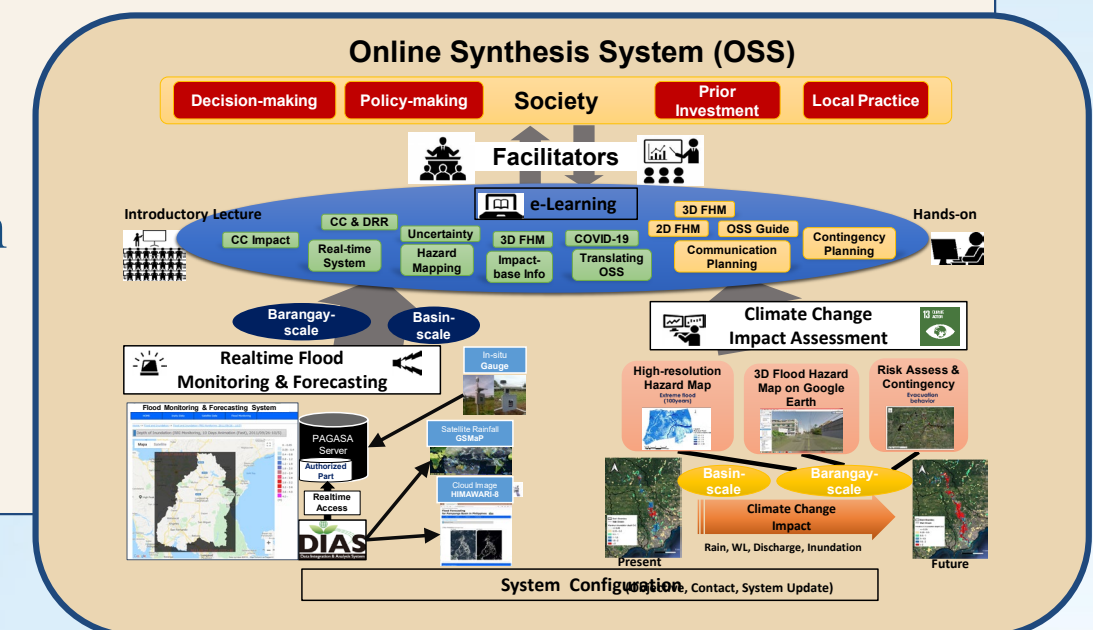
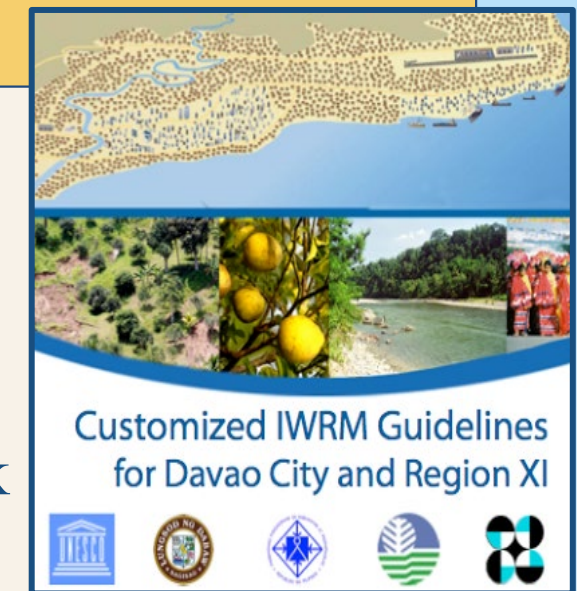
- Water safety & SEPLS-informed basin practices to IP communities within DRB

Expanded LGU & Community Engagement

- Cross-sectoral collaboration and international participations

Science - Based Decision Tool

- Continued implementation of Davao Region OSS (DROSS) in collaboration with ICHARM- Japan



Lessons, Outcomes & IPSI Contribution

Key Lessons

- **Knowledge co - production** strengthens legitimacy and improves policy uptake
- **Trust - building** is foundational
- Science must be **translated into accessible governance tools**
- **Adaptive and flexible coordination mechanisms** are essential

Key Challenges

- Fragmented mandates
- Competing priorities
- Sustaining long - term engagement
- Translating technical research to actionable policy

Contribution to IPSI

- Anchoring river basin governance in **SEPLS and Satoyama principles**
- Strengthen **institutional collaboration**
- Scalable model for river basin management
- Linking science – policy – communities